

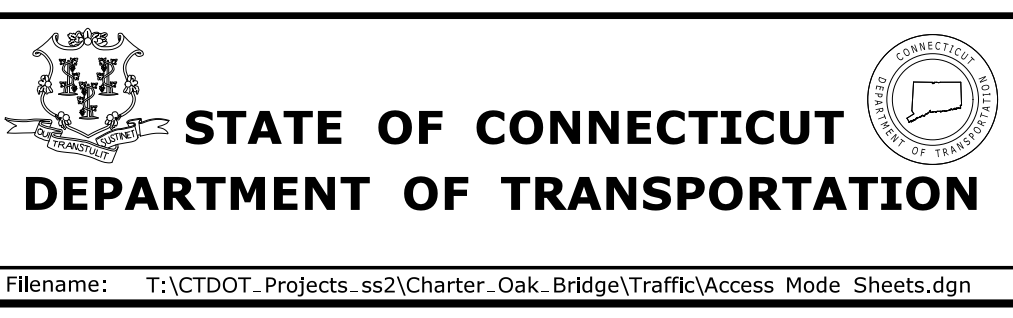
**ACCESS MODIFICATION REPORT**

REV.	DATE	REVISION DESCRIPTION	SHEET NO.
-	-	-	-
-	-	-	-
-	-	-	-
-	-	-	-
-	-	-	-

THE INFORMATION, INCLUDING ESTIMATED QUANTITIES OF WORK SHOWN ON THESE SHEETS IS BASED ON LIMITED INVESTIGATIONS BY THE STATE AND IS IN NO WAY WARRANTED TO INDICATE THE CONDITIONS OF ACTUAL QUANTITIES OF WORK WHICH WILL BE REQUIRED.

Plotted Date: 11/4/2015

DESIGNER/DRAFTER:  
 CHECKED BY:  
 SCALE IN FEET  
 0 40 80  
 SCALE 1"=40'



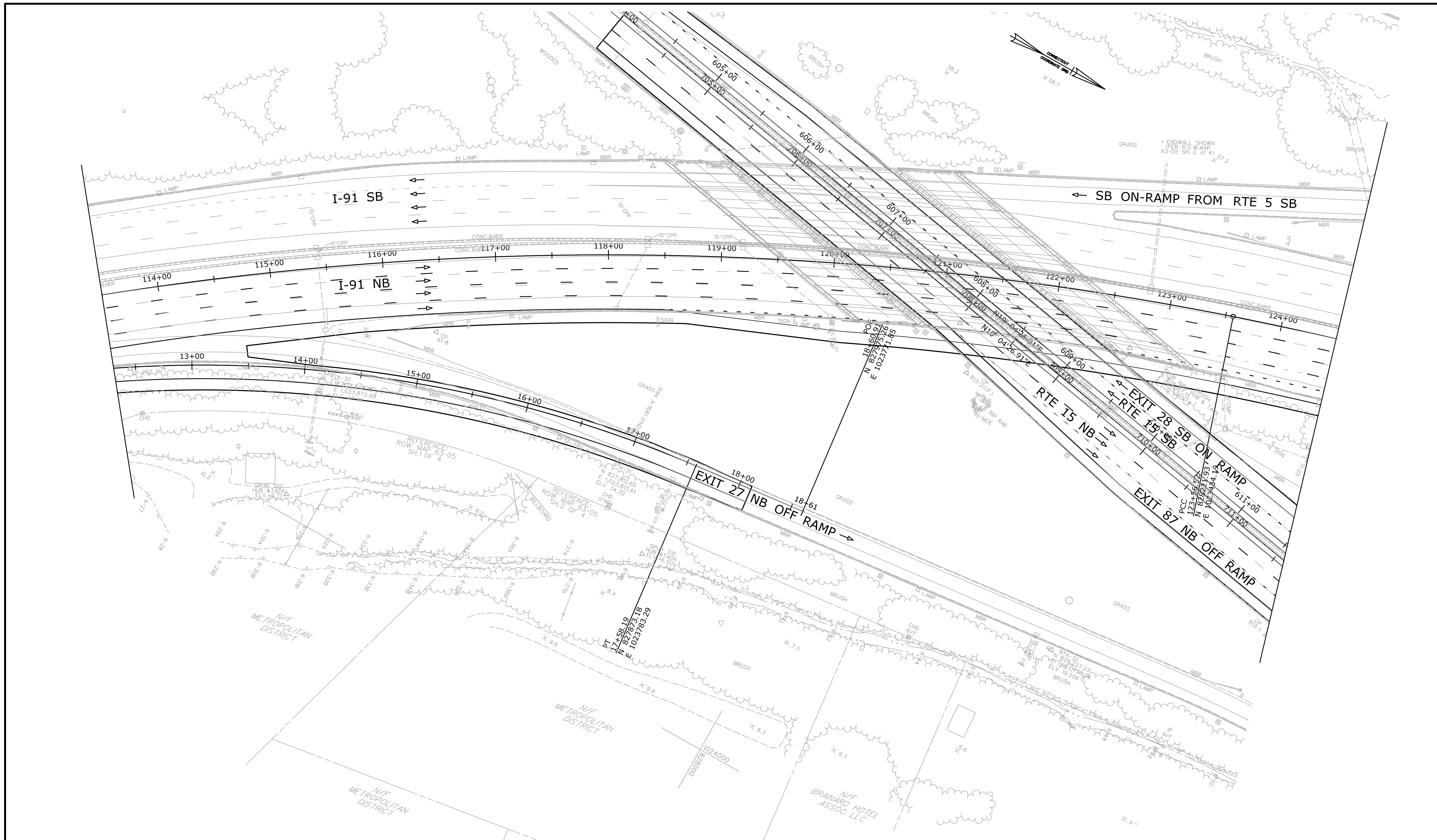
SIGNATURE/BLOCK:  
**OFFICE OF ENGINEERING**  
 APPROVED BY: DATE:

PROJECT TITLE:  
**RELOCATION OF I-91 NB INTERCHANGE 29 AND WIDENING OF I-91 NB AND ROUTE 15 NB TO I-84 EB**

TOWN: **CITY OF HARTFORD TOWN OF EAST HARTFORD**  
 DRAWING TITLE: **ACCESS MOD PLAN**

PROJECT NO.: **63-703**  
 DRAWING NO.: **AM-1**  
 SHEET NO.:

Filename: T:\CTDOT\_Projcts\_ss2\Charter\_Oak\_Bridge\Traffic\Access Mode Sheets.dgn



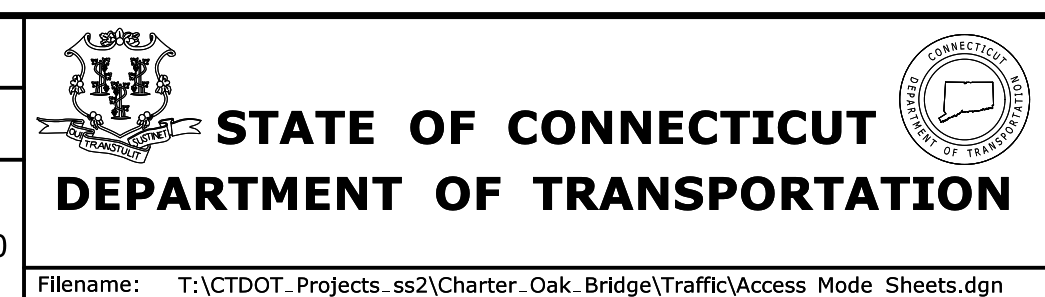
**ACCESS MODIFICATION REPORT**

REV.	DATE	REVISION DESCRIPTION	SHEET NO.
-	-	-	-
-	-	-	-
-	-	-	-
-	-	-	-
-	-	-	-

THE INFORMATION, INCLUDING ESTIMATED QUANTITIES OF WORK, SHOWN ON THESE SHEETS IS BASED ON LIMITED INVESTIGATIONS BY THE STATE AND IS IN NO WAY WARRANTED TO INDICATE THE CONDITIONS OF ACTUAL QUANTITIES OF WORK WHICH WILL BE REQUIRED.

Plotted Date: 11/4/2015

DESIGNER/DRAFTER:  
CHECKED BY:  
SCALE IN FEET  
0 40 80  
SCALE 1"=40'

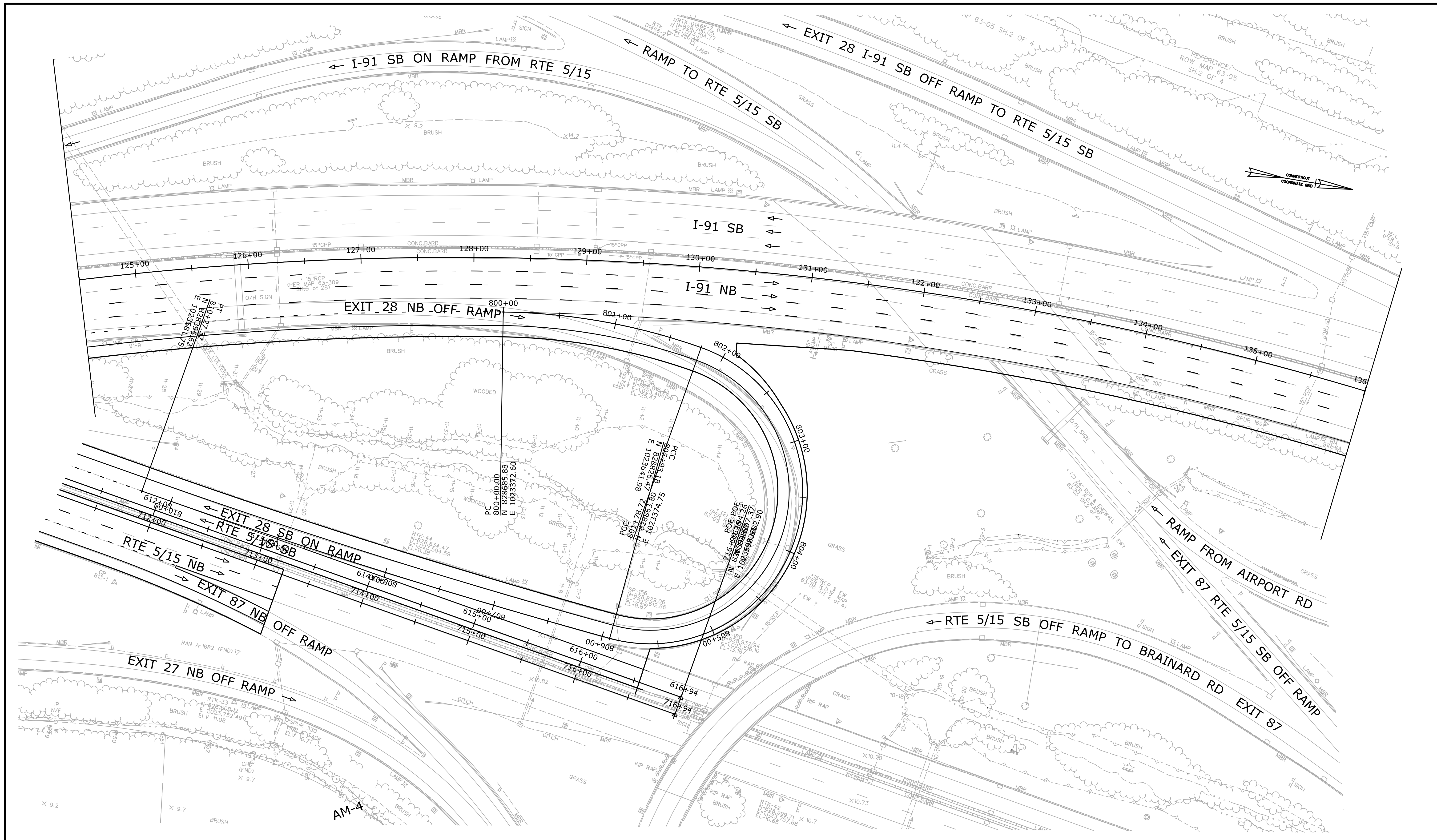


SIGNATURE/  
BLOCK:  
**OFFICE OF ENGINEERING**  
APPROVED BY: DATE:

PROJECT TITLE:  
**RELOCATION OF I-91 NB  
INTERCHANGE 29 AND WIDENING  
OF I-91 NB AND ROUTE 15 NB  
TO I-84 EB**

TOWN: **CITY OF HARTFORD  
TOWN OF  
EAST HARTFORD**  
DRAWING TITLE:  
**ACCESS MOD PLAN**

PROJECT NO.: **63-703**  
DRAWING NO.: **AM-2**  
SHEET NO.:



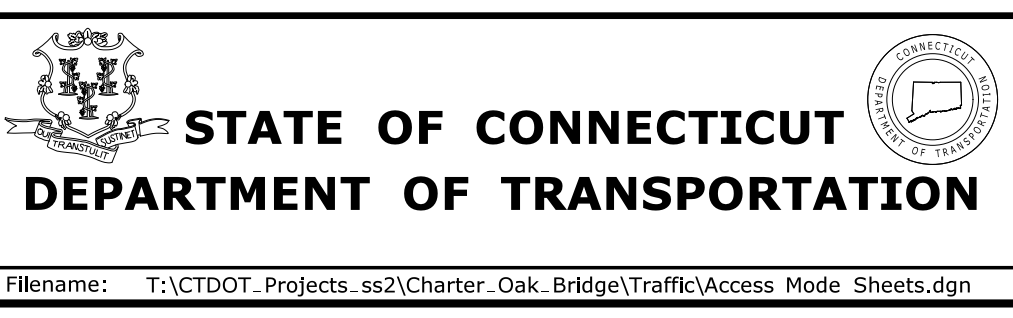
**ACCESS MODIFICATION REPORT**

REV.	DATE	REVISION DESCRIPTION	SHEET NO.
-	-	-	-
-	-	-	-
-	-	-	-
-	-	-	-
-	-	-	-
-	-	-	-
-	-	-	-
-	-	-	-
-	-	-	-

THE INFORMATION, INCLUDING ESTIMATED QUANTITIES OF WORK SHOWN ON THESE SHEETS IS BASED ON LIMITED INVESTIGATIONS BY THE STATE AND IS IN NO WAY WARRANTED TO INDICATE THE CONDITIONS OF ACTUAL QUANTITIES OF WORK WHICH WILL BE REQUIRED.

Plotted Date: 11/4/2015

DESIGNER/DRAFTER:  
CHECKED BY:  
SCALE IN FEET  
0 40 80  
SCALE 1"=40'

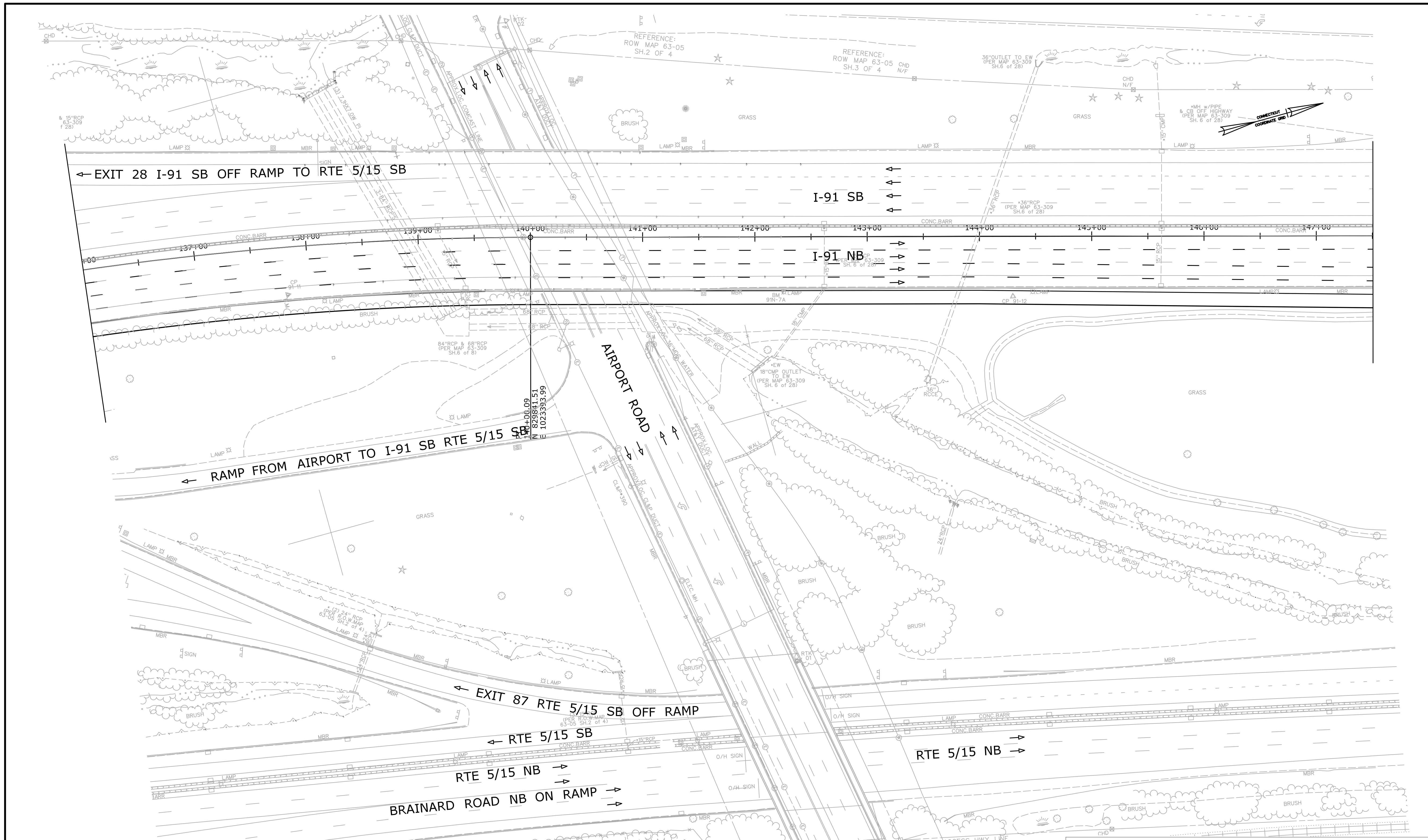


SIGNATURE/  
BLOCK:  
**OFFICE OF ENGINEERING**  
APPROVED BY: DATE:

PROJECT TITLE:  
**RELOCATION OF I-91 NB INTERCHANGE 29 AND WIDENING OF I-91 NB AND ROUTE 15 NB TO I-84 EB**

TOWN: **CITY OF HARTFORD TOWN OF EAST HARTFORD**  
DRAWING TITLE: **ACCESS MOD PLAN**

PROJECT NO.: **63-703**  
DRAWING NO.: **AM-3**  
SHEET NO.:



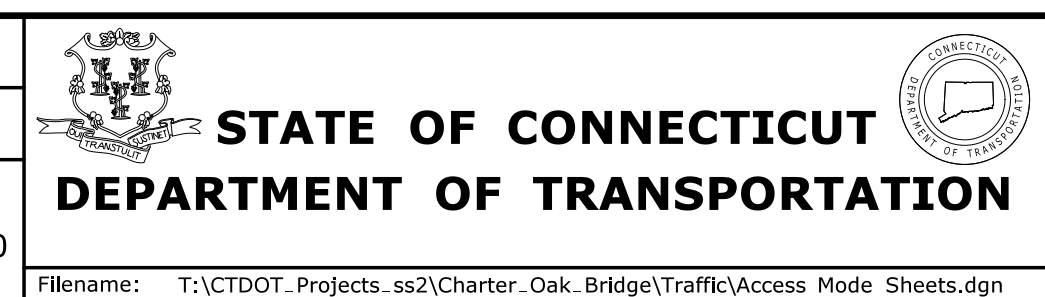
**ACCESS MODIFICATION REPORT**

REV.	DATE	REVISION DESCRIPTION	SHEET NO.
-	-	-	-
-	-	-	-
-	-	-	-
-	-	-	-
-	-	-	-
-	-	-	-

THE INFORMATION, INCLUDING ESTIMATED QUANTITIES OF WORK SHOWN ON THESE SHEETS IS BASED ON LIMITED INVESTIGATIONS BY THE STATE AND IS IN NO WAY WARRANTED TO INDICATE THE CONDITIONS OF ACTUAL QUANTITIES OF WORK WHICH WILL BE REQUIRED.

Plotted Date: 11/4/2015

DESIGNER/DRAFTER:  
 CHECKED BY:  
 SCALE IN FEET  
 0 40 80  
 SCALE 1"=40'



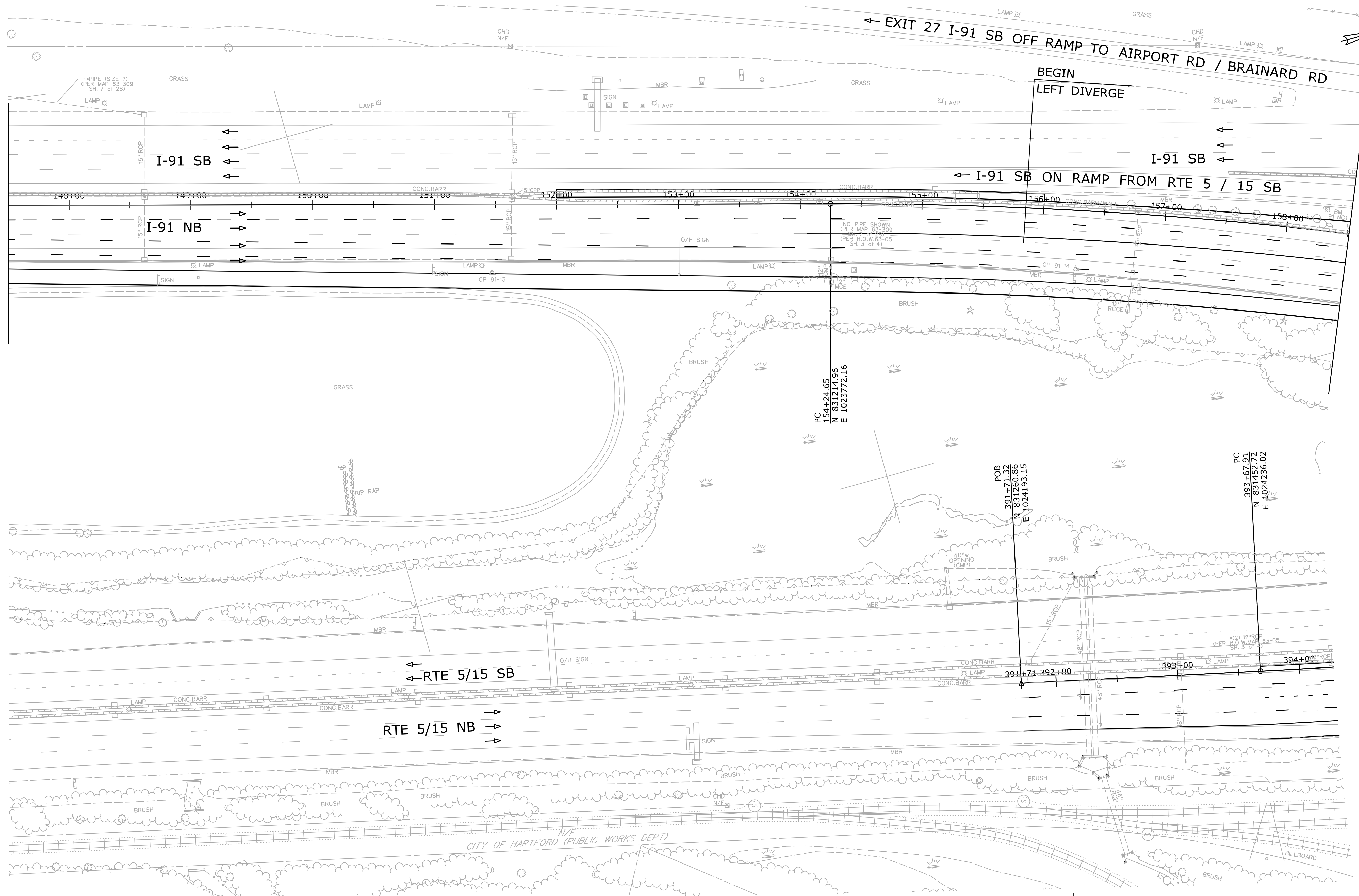
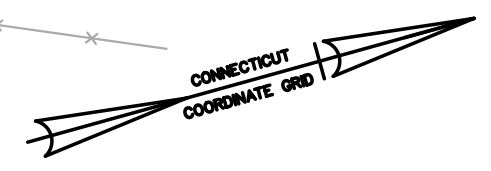
SIGNATURE/  
 BLOCK:  
 OFFICE OF ENGINEERING  
 APPROVED BY: DATE:

PROJECT TITLE:  
**RELOCATION OF I-91 NB  
 INTERCHANGE 29 AND WIDENING  
 OF I-91 NB AND ROUTE 15 NB  
 TO I-84 EB**

TOWN: **CITY OF HARTFORD  
 TOWN OF  
 EAST HARTFORD**  
 DRAWING TITLE:  
**ACCESS MOD PLAN**

PROJECT NO.: **63-703**  
 DRAWING NO.: **AM-4**  
 SHEET NO.

Filename: T:\CTDOT\Projects.ss2\Charter\_Oak\_Bridge\Traffic\Access Mode Sheets.dgn

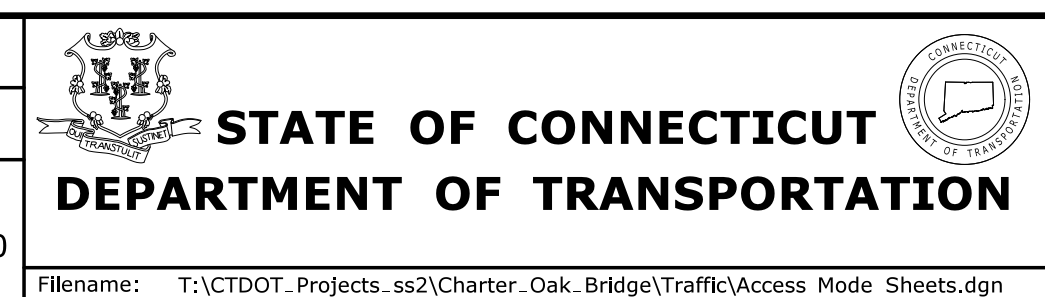


**ACCESS MODIFICATION REPORT**

AM-6	
REV.	DATE

THE INFORMATION, INCLUDING ESTIMATED QUANTITIES OF WORK, SHOWN ON THESE SHEETS IS BASED ON LIMITED INVESTIGATIONS BY THE STATE AND IS IN NO WAY WARRANTED TO INDICATE THE CONDITIONS OF ACTUAL QUANTITIES OF WORK WHICH WILL BE REQUIRED.

DESIGNER/DRAFTER:  
CHECKED BY:  
SCALE IN FEET  
0 40 80  
SCALE 1"=40'



SIGNATURE/  
BLOCK:  
**OFFICE OF ENGINEERING**  
APPROVED BY: DATE:

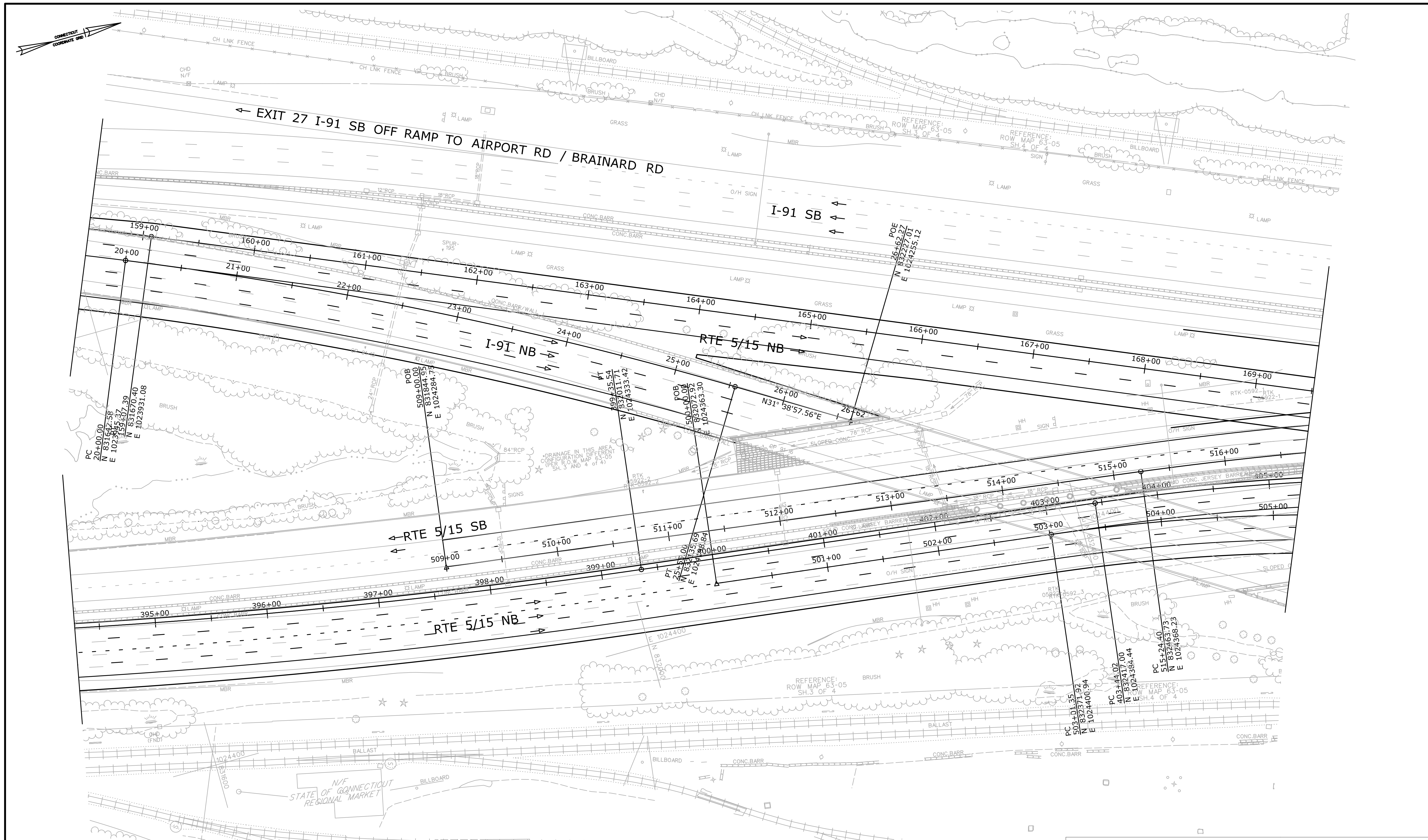
PROJECT TITLE:  
**RELOCATION OF I-91 NB  
INTERCHANGE 29 AND WIDENING  
OF I-91 NB AND ROUTE 15 NB  
TO I-84 EB**

TOWN: **CITY OF HARTFORD  
TOWN OF  
EAST HARTFORD**  
DRAWING TITLE:  
**ACCESS MOD PLAN**

PROJECT NO.: **63-703**  
DRAWING NO.: **AM-5**  
SHEET NO.:

Plotted Date: 11/4/2015

Filename: T:\CTDOT\Projects.ss2\Charter\_Oak\_Bridge\Traffic\Access Mode Sheets.dgn



**ACCESS MODIFICATION REPORT**

REV.	DATE	REVISION DESCRIPTION	SHEET NO.
-	-	-	-
-	-	-	-
-	-	-	-
-	-	-	-
-	-	-	-
-	-	-	-
-	-	-	-
-	-	-	-
-	-	-	-

THE INFORMATION, INCLUDING ESTIMATED QUANTITIES OF WORK, SHOWN ON THESE SHEETS IS BASED ON LIMITED INVESTIGATIONS BY THE STATE AND IS IN NO WAY WARRANTED TO INDICATE THE CONDITIONS OF ACTUAL QUANTITIES OF WORK WHICH WILL BE REQUIRED.

Plotted Date: 11/4/2015

DESIGNER/DRAFTER:  
CHECKED BY:  
SCALE IN FEET  
0 40 80  
SCALE 1"=40'

STATE OF CONNECTICUT  
DEPARTMENT OF TRANSPORTATION

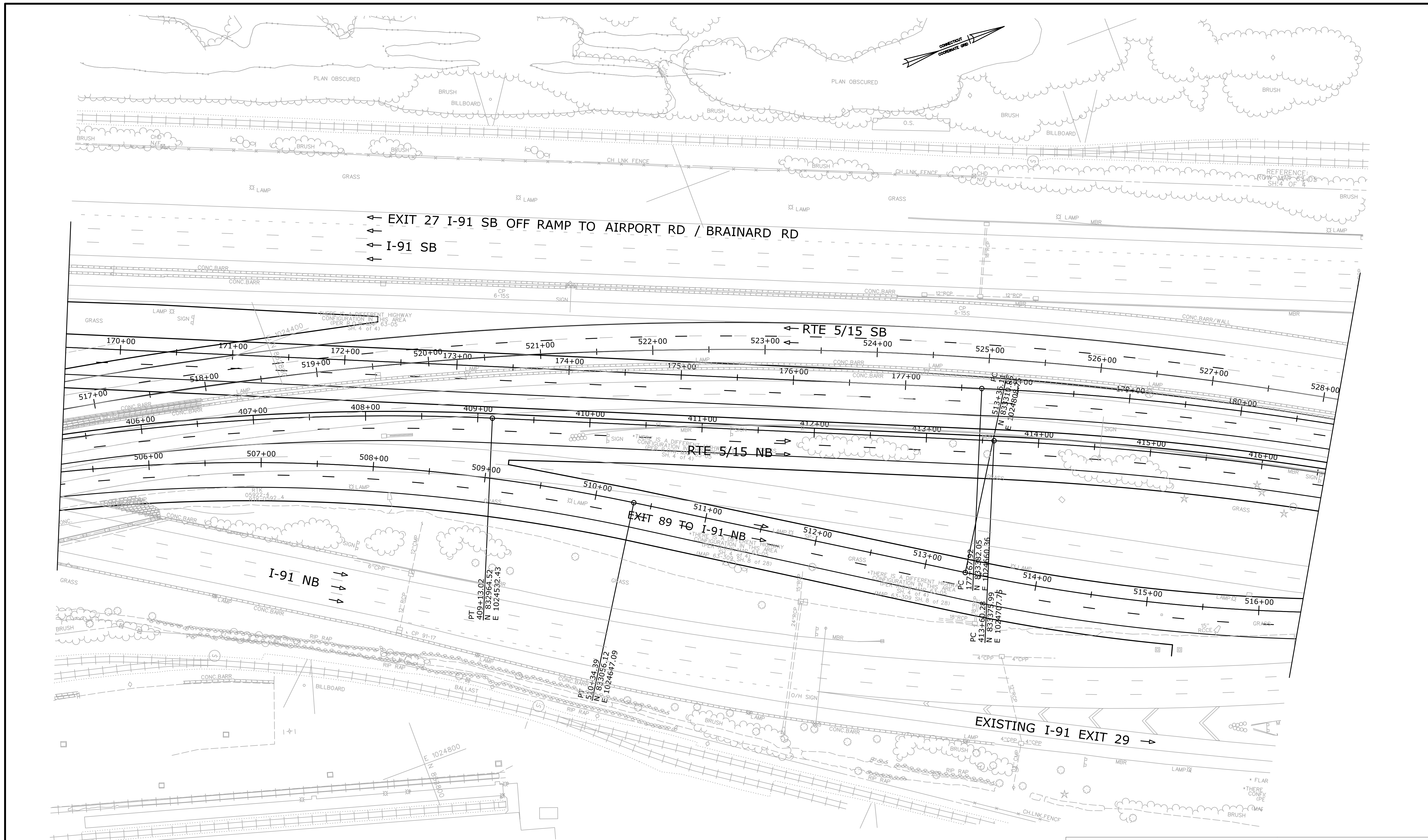
File name: T:\CTDOT\_Projcts.ss2\Charter\_Oak\_Brdge\Traffic\Access Mode Sheets.dgn

SIGNATURE/BLOCK:  
OFFICE OF ENGINEERING  
APPROVED BY: DATE:

PROJECT TITLE:  
**RELOCATION OF I-91 NB INTERCHANGE 29 AND WIDENING OF I-91 NB AND ROUTE 15 NB TO I-84 EB**

TOWN: CITY OF HARTFORD  
TOWN OF EAST HARTFORD  
DRAWING TITLE: ACCESS MOD PLAN

PROJECT NO. 63-703  
DRAWING NO. AM-6  
SHEET NO.



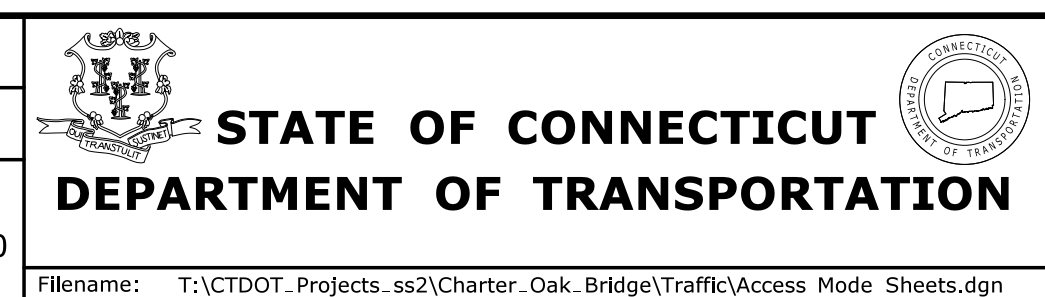
**ACCESS MODIFICATION REPORT**

REV.	DATE	REVISION DESCRIPTION	SHEET NO.
-	-	-	-
-	-	-	-
-	-	-	-
-	-	-	-
-	-	-	-
-	-	-	-
-	-	-	-
-	-	-	-
-	-	-	-

THE INFORMATION, INCLUDING ESTIMATED QUANTITIES OF WORK SHOWN ON THESE SHEETS IS BASED ON LIMITED INVESTIGATIONS BY THE STATE AND IS IN NO WAY WARRANTED TO INDICATE THE CONDITIONS OF ACTUAL QUANTITIES OF WORK WHICH WILL BE REQUIRED.

Plotted Date: 11/4/2015

DESIGNER/DRAFTER:  
CHECKED BY:  
SCALE IN FEET  
0 40 80  
SCALE 1"=40'

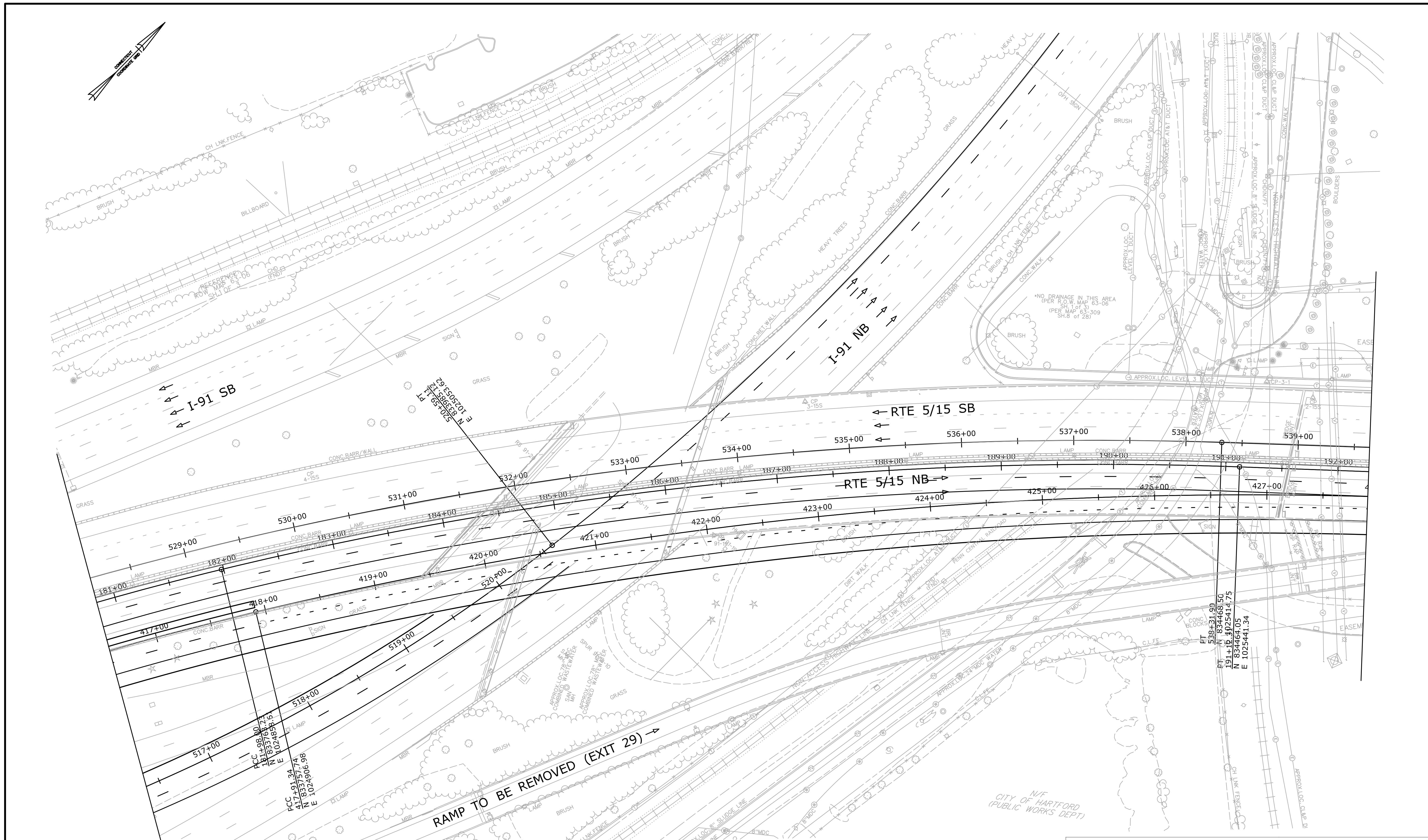


SIGNATURE/  
BLOCK:  
OFFICE OF ENGINEERING  
APPROVED BY: DATE:

PROJECT TITLE:  
**RELOCATION OF I-91 NB  
INTERCHANGE 29 AND WIDENING  
OF I-91 NB AND ROUTE 15 NB  
TO I-84 EB**

TOWN: CITY OF HARTFORD  
TOWN OF EAST HARTFORD  
DRAWING TITLE:  
**ACCESS MOD PLAN**

PROJECT NO.: **63-703**  
DRAWING NO.: **AM-7**  
SHEET NO.:



**ACCESS MODIFICATION REPORT**

REV.	DATE	REVISION DESCRIPTION	SHEET NO.
-	-	-	-
-	-	-	-
-	-	-	-
-	-	-	-
-	-	-	-
-	-	-	-
-	-	-	-

THE INFORMATION, INCLUDING ESTIMATED QUANTITIES OF WORK SHOWN ON THESE SHEETS IS BASED ON LIMITED INVESTIGATIONS BY THE STATE AND IS IN NO WAY WARRANTED TO INDICATE THE CONDITIONS OF ACTUAL QUANTITIES OF WORK WHICH WILL BE REQUIRED.

Plotted Date: 11/4/2015

DESIGNER/DRAFTER:  
CHECKED BY:  
SCALE IN FEET  
0 40 80  
SCALE 1"=40'

STATE OF CONNECTICUT  
DEPARTMENT OF TRANSPORTATION

File name: T:\CTDOT\_Projects\_ss2\Charter\_Oak\_Bridge\Traffic\Access Mode Sheets.dgn

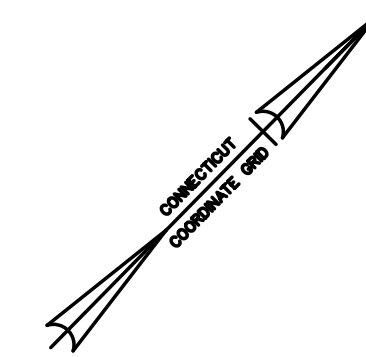
SIGNATURE/  
BLOCK:  
OFFICE OF ENGINEERING  
APPROVED BY: DATE:

PROJECT TITLE:  
**RELOCATION OF I-91 NB  
INTERCHANGE 29 AND WIDENING  
OF I-91 NB AND ROUTE 15 NB  
TO I-84 EB**

TOWN: **CITY OF HARTFORD  
TOWN OF  
EAST HARTFORD**  
DRAWING TITLE:  
**ACCESS MOD PLAN**

PROJECT NO.: **63-703**  
DRAWING NO.: **AM-8**  
SHEET NO.





CONNECTICUT RIVER

NON-ACCESS HWY LINE

REFERENCE ROW MAP 4:

PARCEL RELEASE  
63-18 3C

PARCEL RELEASE  
63-18 1B

POE  
541+76.46  
N 83°47'01.51"  
E 102°56'08.57"

APPROX. LOC. 6" MDC WATER

APPROX. LOC. CL&P DUCT

MENT & NON ACCESS HWY LINE

CHAIN LINK FENCE

APPROX. LOC. CL&P DUCT

EASEMENT & NON ACCESS HWY LINE

EASEMENT & NON ACCESS LINE  
SHOWS ENDING AT THE RIVERBANK

CHARTER OAK BRIDGE

RTE 5/15 SB

RTE 5/15 NB

RELOCATED EXIT 29

EASEMENT & NON ACCESS HWY LINE  
SHOWS ENDING AT THE RIVERBANK

CONNECTICUT RIVER

N/F  
CITY OF HARTFORD  
(FLOOD COMMISSION)

N/F  
CONN. RESOURCES  
RECOVERY AUTHORITY

PT.  
428+23.81  
N 83°45'48.24"  
E 102°55'56.21"

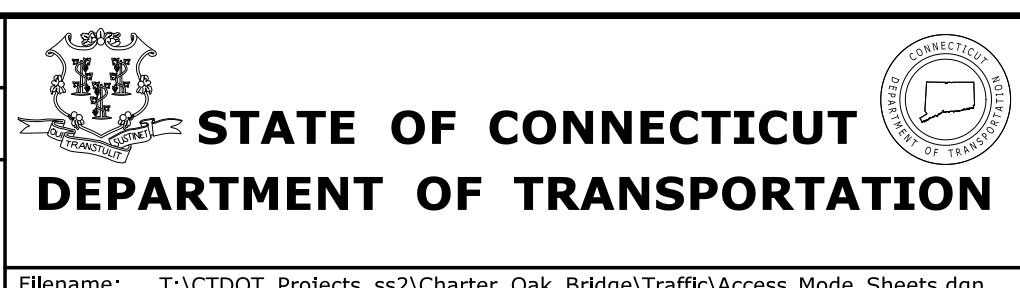
**ACCESS MODIFICATION REPORT**

REV.	DATE	REVISION DESCRIPTION	SHEET NO.
-	-	-	-
-	-	-	-
-	-	-	-
-	-	-	-
-	-	-	-

THE INFORMATION, INCLUDING ESTIMATED QUANTITIES OF WORK SHOWN ON THESE SHEETS IS BASED ON LIMITED INVESTIGATIONS BY THE STATE AND IS IN NO WAY WARRANTED TO INDICATE THE CONDITIONS OF ACTUAL QUANTITIES OF WORK WHICH WILL BE REQUIRED.

Plotted Date: 11/4/2015

DESIGNER/DRAFTER:  
CHECKED BY:  
SCALE IN FEET  
0 40 80  
SCALE 1"=40'



SIGNATURE/  
BLOCK:  
OFFICE OF ENGINEERING  
APPROVED BY: DATE:

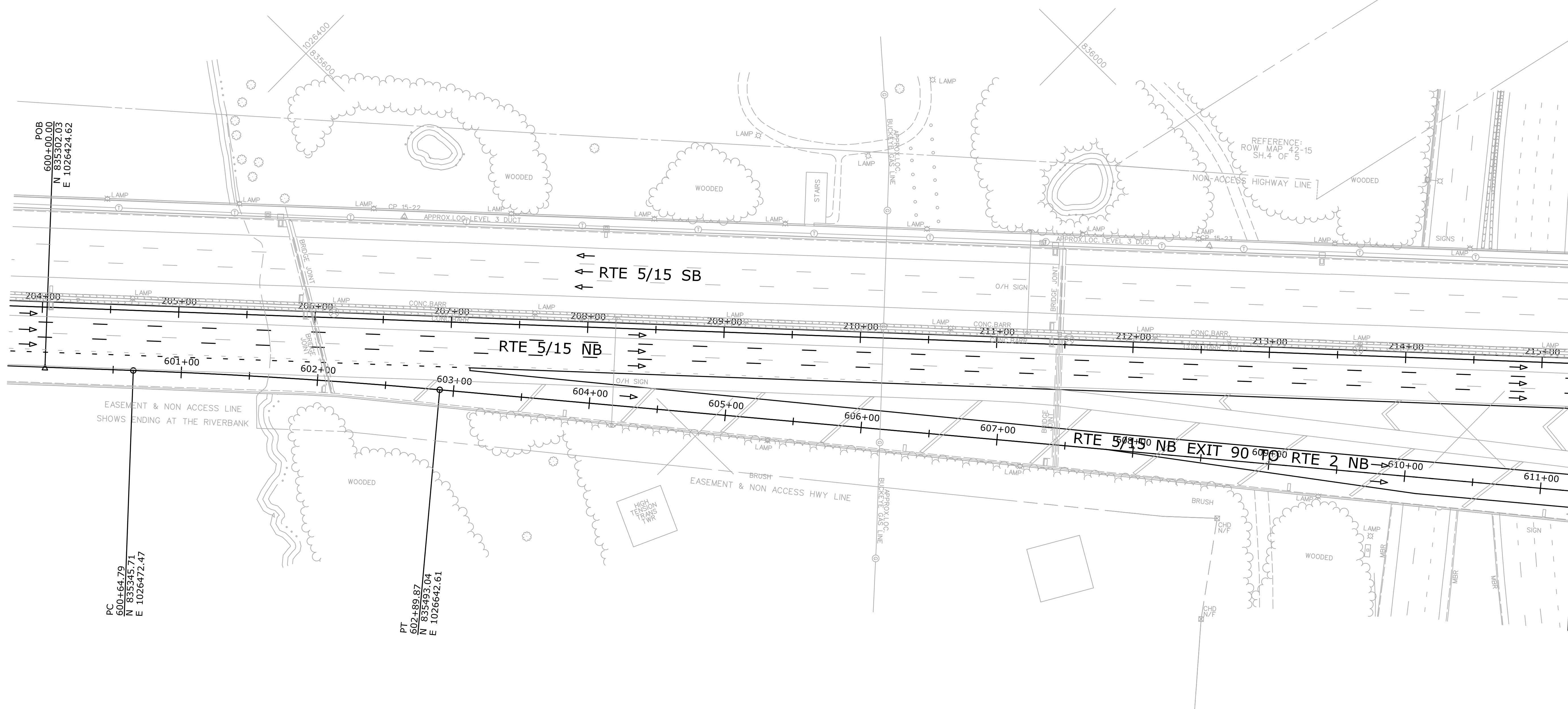
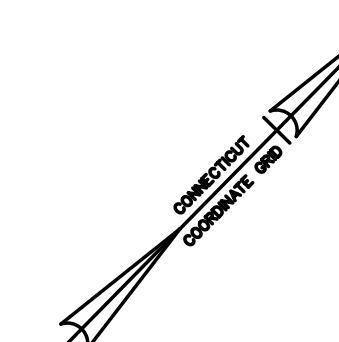
PROJECT TITLE:  
**RELOCATION OF I-91 NB  
INTERCHANGE 29 AND WIDENING  
OF I-91 NB AND ROUTE 15 NB  
TO I-84 EB**

TOWN: **CITY OF HARTFORD  
TOWN OF  
EAST HARTFORD**  
DRAWING TITLE:  
**ACCESS MOD PLAN**

PROJECT NO.: **63-703**  
DRAWING NO.: **AM-9**  
SHEET NO.:

18 SH.1 OF 4

REFERENCE: ROW MAP 42-18 SH.1 OF 4



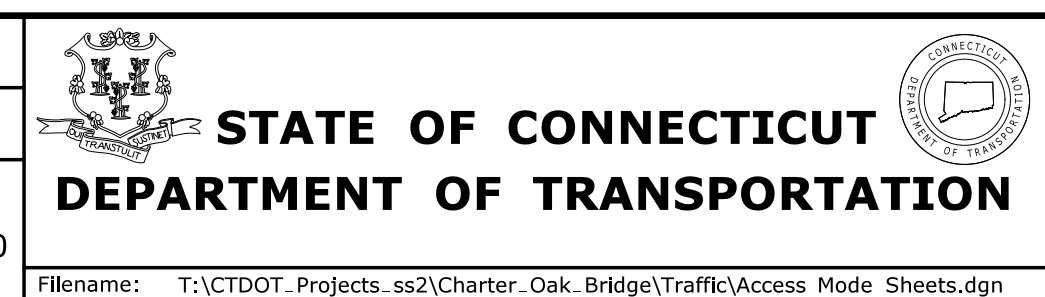
**ACCESS MODIFICATION REPORT**

REV.	DATE	REVISION DESCRIPTION	SHEET NO.
-	-	-	-
-	-	-	-
-	-	-	-
-	-	-	-
-	-	-	-
-	-	-	-
-	-	-	-
-	-	-	-
-	-	-	-
-	-	-	-

THE INFORMATION, INCLUDING ESTIMATED QUANTITIES OF WORK, SHOWN ON THESE SHEETS IS BASED ON LIMITED INVESTIGATIONS BY THE STATE AND IS IN NO WAY WARRANTED TO INDICATE THE CONDITIONS OF ACTUAL QUANTITIES OF WORK WHICH WILL BE REQUIRED.

Plotted Date: 11/4/2015

DESIGNER/DRAFTER:  
CHECKED BY:  
SCALE IN FEET  
0 40 80  
SCALE 1"=40'

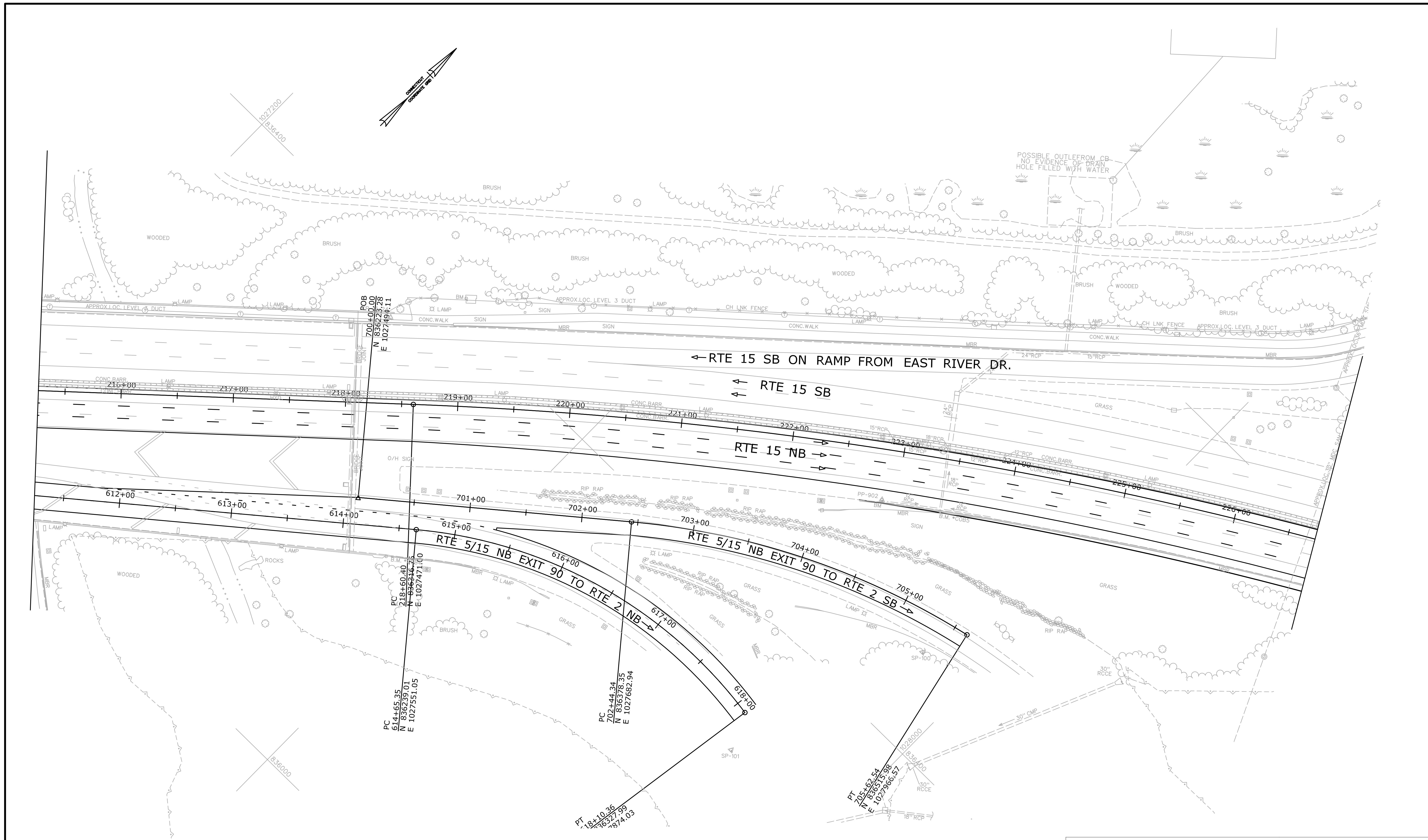


SIGNATURE/  
BLOCK:  
**OFFICE OF ENGINEERING**  
APPROVED BY: DATE:

PROJECT TITLE:  
**RELOCATION OF I-91 NB INTERCHANGE 29 AND WIDENING OF I-91 NB AND ROUTE 15 NB TO I-84 EB**

TOWN: **CITY OF HARTFORD TOWN OF EAST HARTFORD**  
DRAWING TITLE: **ACCESS MOD PLAN**

PROJECT NO. **63-703**  
DRAWING NO. **AM-10**  
SHEET NO.



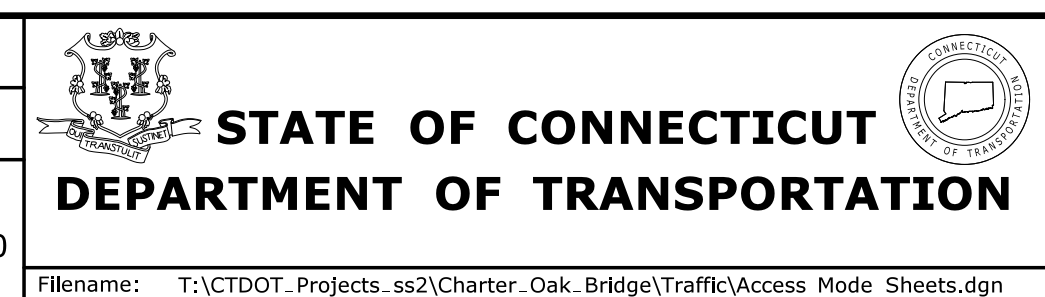
**ACCESS MODIFICATION REPORT**

REV.	DATE	REVISION DESCRIPTION	SHEET NO.
-	-	-	-
-	-	-	-
-	-	-	-
-	-	-	-
-	-	-	-
-	-	-	-
-	-	-	-

THE INFORMATION, INCLUDING ESTIMATED QUANTITIES OF WORK, SHOWN ON THESE SHEETS IS BASED ON LIMITED INVESTIGATIONS BY THE STATE AND IS IN NO WAY WARRANTED TO INDICATE THE CONDITIONS OF ACTUAL QUANTITIES OF WORK WHICH WILL BE REQUIRED.

Plotted Date: 11/4/2015

DESIGNER/DRAFTER:  
 CHECKED BY:  
 SCALE IN FEET  
 0 40 80  
 SCALE 1" = 40'

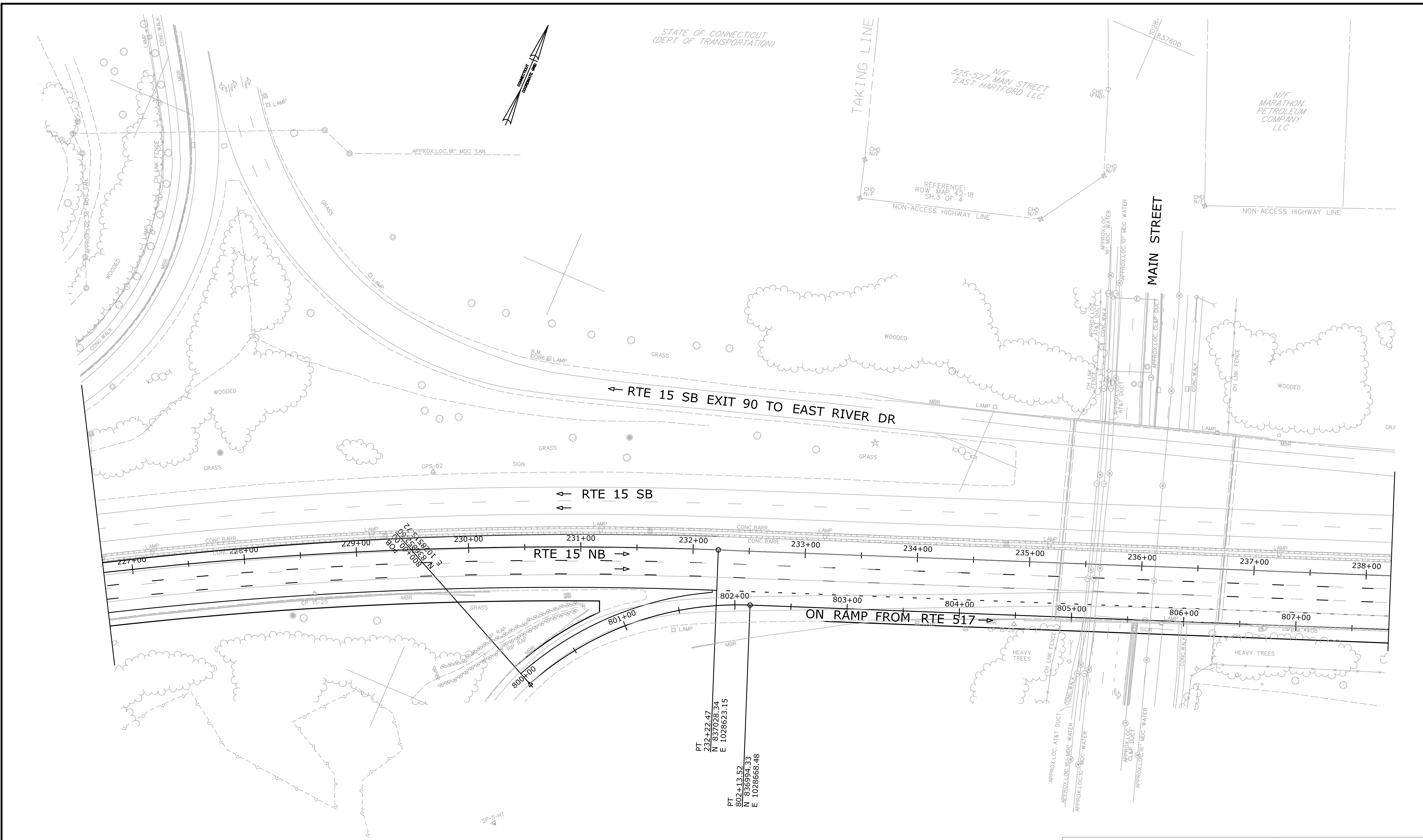


SIGNATURE/  
 BLOCK:  
**OFFICE OF ENGINEERING**  
 APPROVED BY: DATE:

PROJECT TITLE:  
**RELOCATION OF I-91 NB  
 INTERCHANGE 29 AND WIDENING  
 OF I-91 NB AND ROUTE 15 NB  
 TO I-84 EB**

TOWN: **CITY OF HARTFORD  
 TOWN OF  
 EAST HARTFORD**  
 DRAWING TITLE:  
**ACCESS MOD PLAN**

PROJECT NO.: **63-703**  
 DRAWING NO.: **AM-11**  
 SHEET NO.:



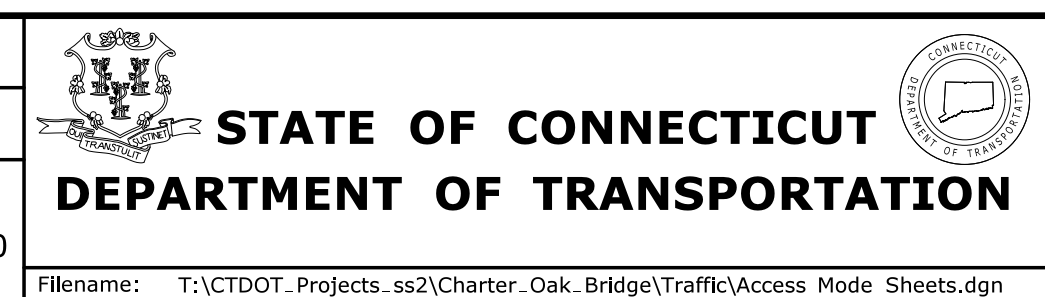
**ACCESS MODIFICATION REPORT**

REV.	DATE	REVISION DESCRIPTION	SHEET NO.
-	-	-	-
-	-	-	-
-	-	-	-
-	-	-	-
-	-	-	-
-	-	-	-
-	-	-	-

THE INFORMATION, INCLUDING ESTIMATED QUANTITIES OF WORK, SHOWN ON THESE SHEETS IS BASED ON LIMITED INVESTIGATIONS BY THE STATE AND IS IN NO WAY WARRANTED TO INDICATE THE CONDITIONS OF ACTUAL QUANTITIES OF WORK WHICH WILL BE REQUIRED.

Plotted Date: 11/4/2015

DESIGNER/DRAFTER:  
 CHECKED BY:  
 SCALE IN FEET  
 0 40 80  
 SCALE 1"=40'

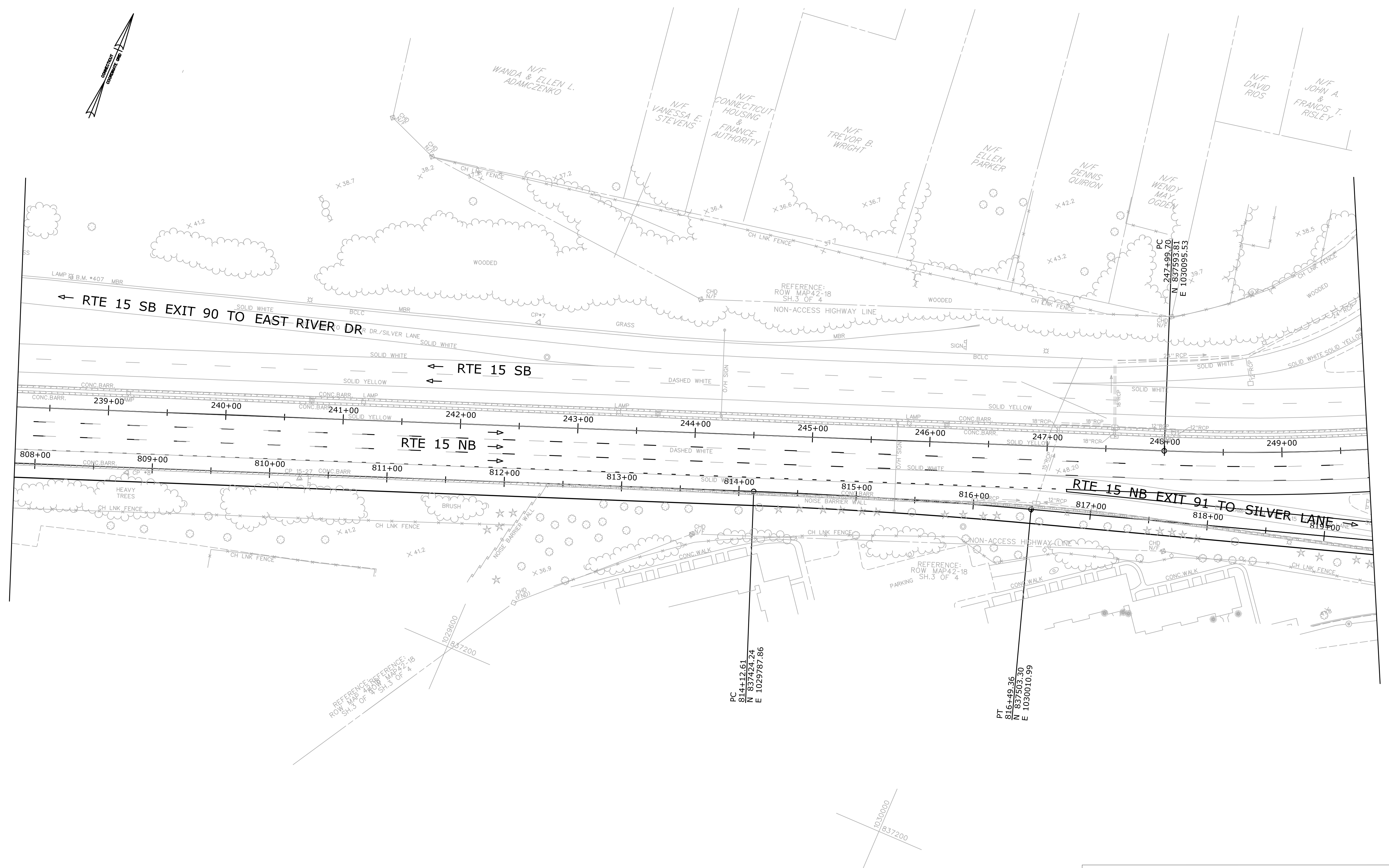
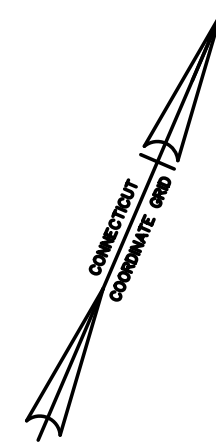


SIGNATURE/  
 BLOCK:  
**OFFICE OF ENGINEERING**  
 APPROVED BY: DATE:

PROJECT TITLE:  
**RELOCATION OF I-91 NB  
 INTERCHANGE 29 AND WIDENING  
 OF I-91 NB AND ROUTE 15 NB  
 TO I-84 EB**

TOWN: **CITY OF HARTFORD  
 TOWN OF  
 EAST HARTFORD**  
 DRAWING TITLE:  
**ACCESS MOD PLAN**

PROJECT NO.: **63-703**  
 DRAWING NO.: **AM-12**  
 SHEET NO.:



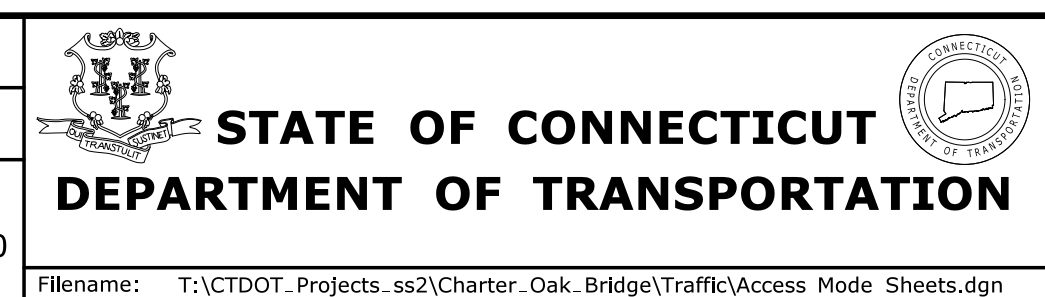
**ACCESS MODIFICATION REPORT**

REV.	DATE	REVISION DESCRIPTION	SHEET NO.
-	-	-	-
-	-	-	-
-	-	-	-
-	-	-	-
-	-	-	-
-	-	-	-
-	-	-	-

THE INFORMATION, INCLUDING ESTIMATED QUANTITIES OF WORK, SHOWN ON THESE SHEETS IS BASED ON LIMITED INVESTIGATIONS BY THE STATE AND IS IN NO WAY WARRANTED TO INDICATE THE CONDITIONS OF ACTUAL QUANTITIES OF WORK WHICH WILL BE REQUIRED.

Plotted Date: 11/4/2015

DESIGNER/DRAFTER:  
CHECKED BY:  
SCALE IN FEET  
0 40 80  
SCALE 1"=40'

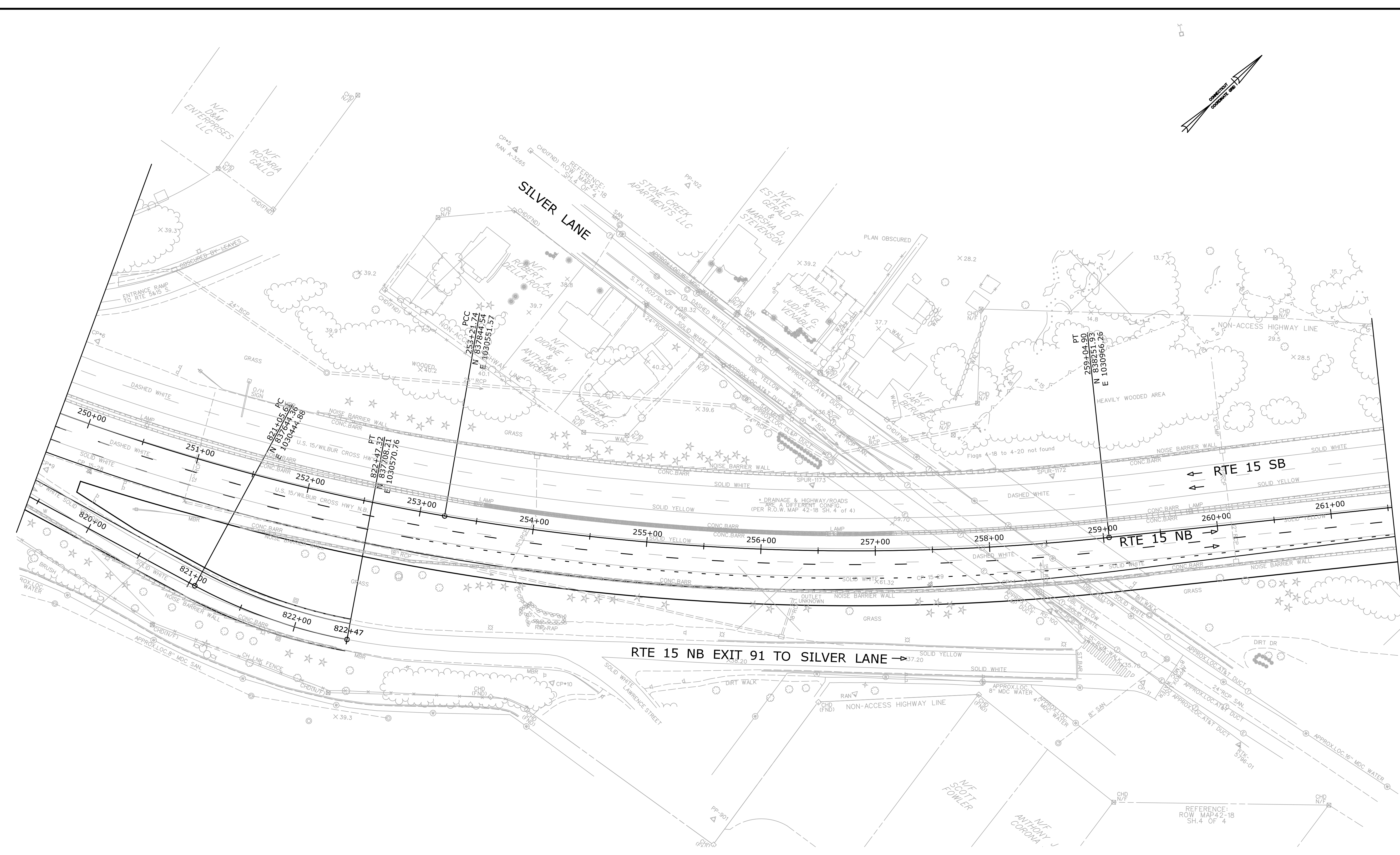
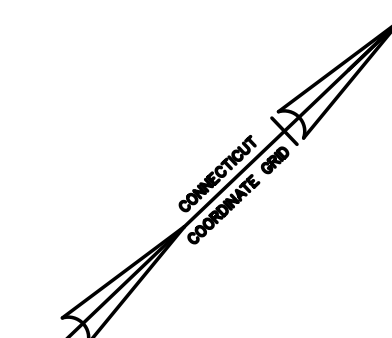


SIGNATURE/  
BLOCK:  
**OFFICE OF ENGINEERING**  
APPROVED BY: DATE:

PROJECT TITLE:  
**RELOCATION OF I-91 NB  
INTERCHANGE 29 AND WIDENING  
OF I-91 NB AND ROUTE 15 NB  
TO I-84 EB**

TOWN: **CITY OF HARTFORD  
TOWN OF  
EAST HARTFORD**  
DRAWING TITLE:  
**ACCESS MOD PLAN**

PROJECT NO.: **63-703**  
DRAWING NO.: **AM-13**  
SHEET NO.:



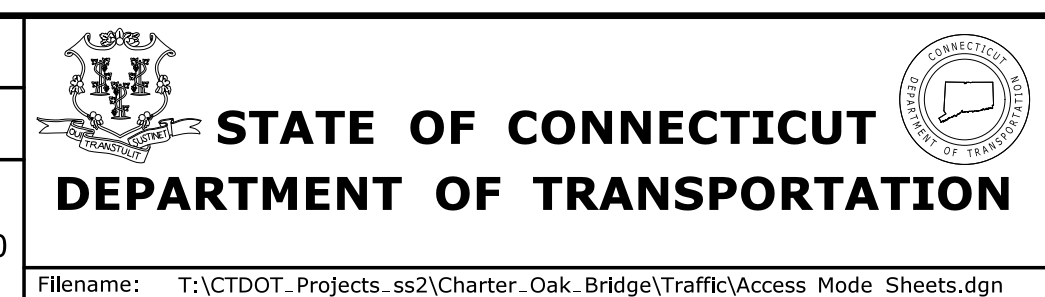
**ACCESS MODIFICATION REPORT**

REV.	DATE	REVISION DESCRIPTION	SHEET NO.
-	-	-	-
-	-	-	-
-	-	-	-
-	-	-	-
-	-	-	-
-	-	-	-
-	-	-	-

THE INFORMATION, INCLUDING ESTIMATED QUANTITIES OF WORK, SHOWN ON THESE SHEETS IS BASED ON LIMITED INVESTIGATIONS BY THE STATE AND IS IN NO WAY WARRANTED TO INDICATE THE CONDITIONS OF ACTUAL QUANTITIES OF WORK WHICH WILL BE REQUIRED.

Plotted Date: 11/4/2015

DESIGNER/DRAFTER:  
CHECKED BY:  
SCALE IN FEET  
0 40 80  
SCALE 1"=40'

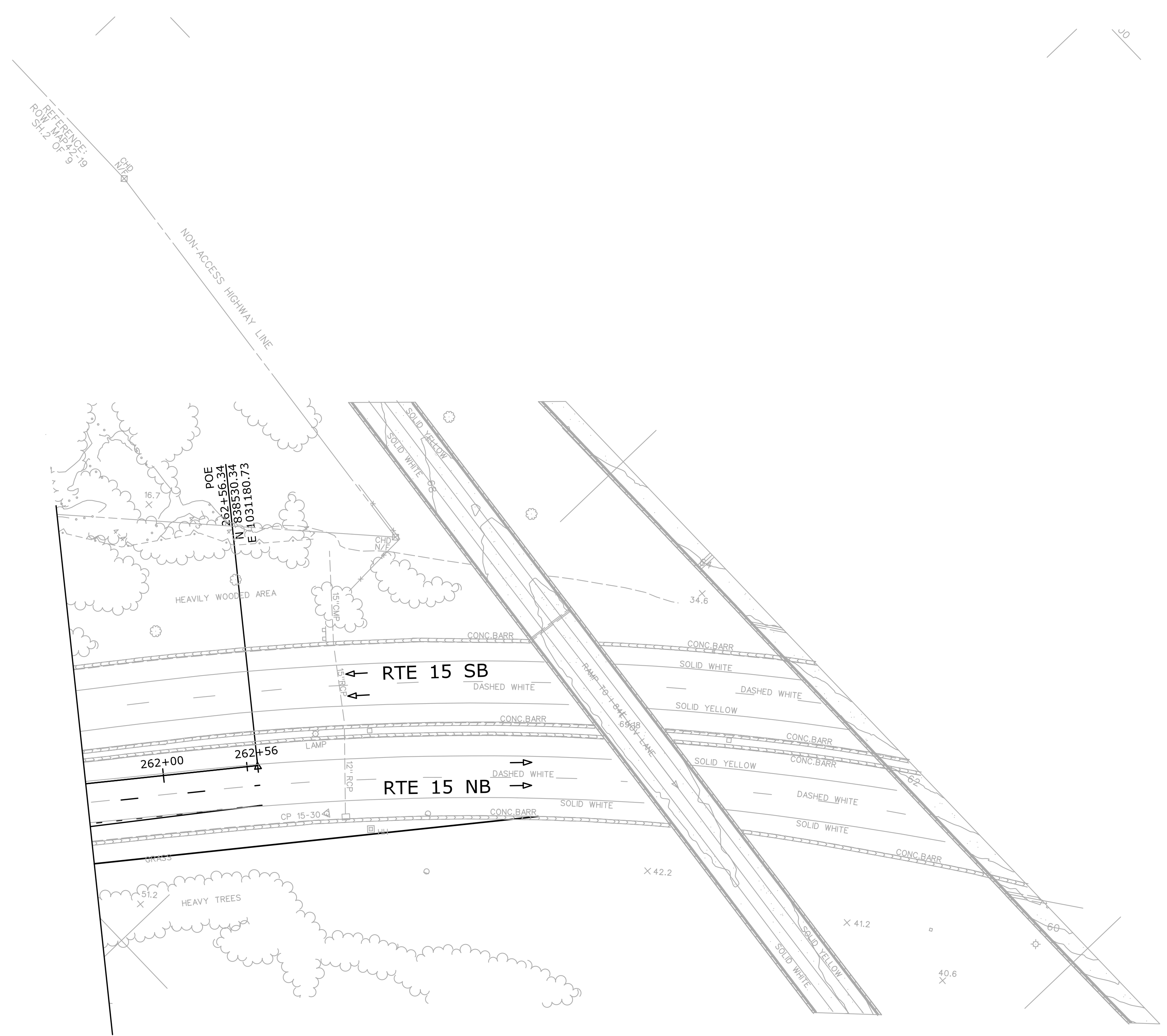
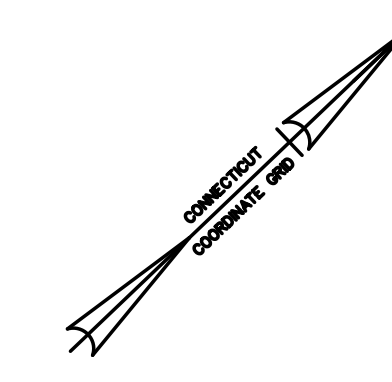


SIGNATURE/  
BLOCK:  
OFFICE OF ENGINEERING  
APPROVED BY: DATE:

PROJECT TITLE:  
**RELOCATION OF I-91 NB  
INTERCHANGE 29 AND WIDENING  
OF I-91 NB AND ROUTE 15 NB  
TO I-84 EB**

TOWN: CITY OF HARTFORD  
TOWN OF EAST HARTFORD  
DRAWING TITLE:  
**ACCESS MOD PLAN**

PROJECT NO.: **63-703**  
DRAWING NO.: **AM-14**  
SHEET NO.:



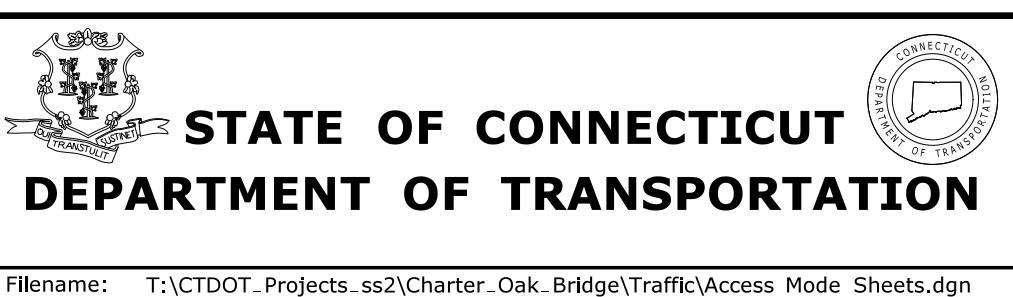
**ACCESS MODIFICATION REPORT**

REV.	DATE	REVISION DESCRIPTION	SHEET NO.
-	-	-	-
-	-	-	-
-	-	-	-
-	-	-	-
-	-	-	-
-	-	-	-

THE INFORMATION, INCLUDING ESTIMATED QUANTITIES OF WORK, SHOWN ON THESE SHEETS IS BASED ON LIMITED INVESTIGATIONS BY THE STATE AND IS IN NO WAY WARRANTED TO INDICATE THE CONDITIONS OF ACTUAL QUANTITIES OF WORK WHICH WILL BE REQUIRED.

Plotted Date: 11/4/2015

DESIGNER/DRAFTER:  
CHECKED BY:  
SCALE IN FEET  
0 40 80  
SCALE 1"=40'



SIGNATURE/  
BLOCK:  
**OFFICE OF ENGINEERING**  
APPROVED BY: DATE:

PROJECT TITLE:  
**RELOCATION OF I-91 NB  
INTERCHANGE 29 AND WIDENING  
OF I-91 NB AND ROUTE 15 NB  
TO I-84 EB**

TOWN:  
**CITY OF HARTFORD  
TOWN OF  
EAST HARTFORD**  
DRAWING TITLE:  
**ACCESS MOD PLAN**

PROJECT NO.  
**63-703**  
DRAWING NO.  
**AM-15**  
SHEET NO.