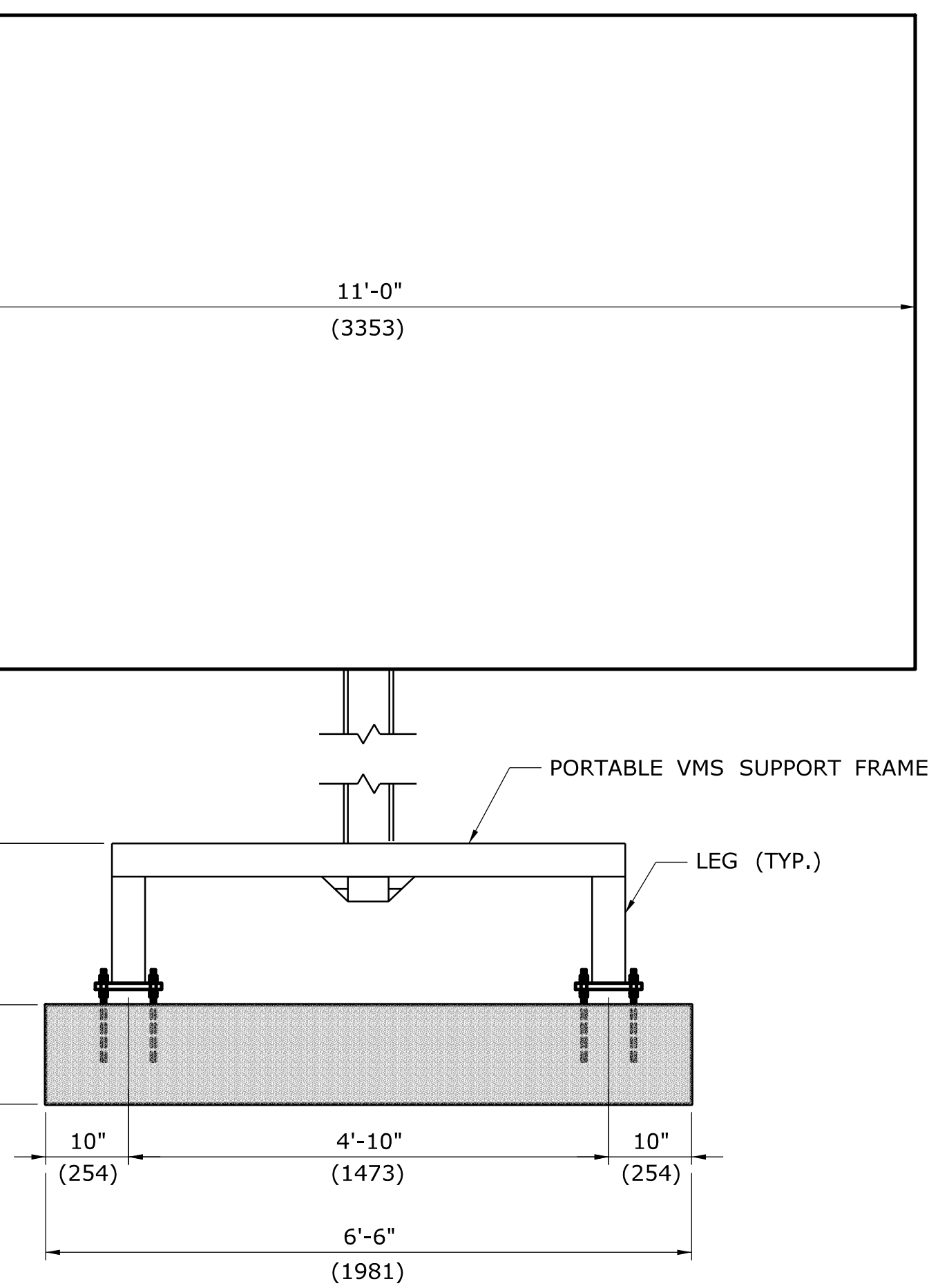
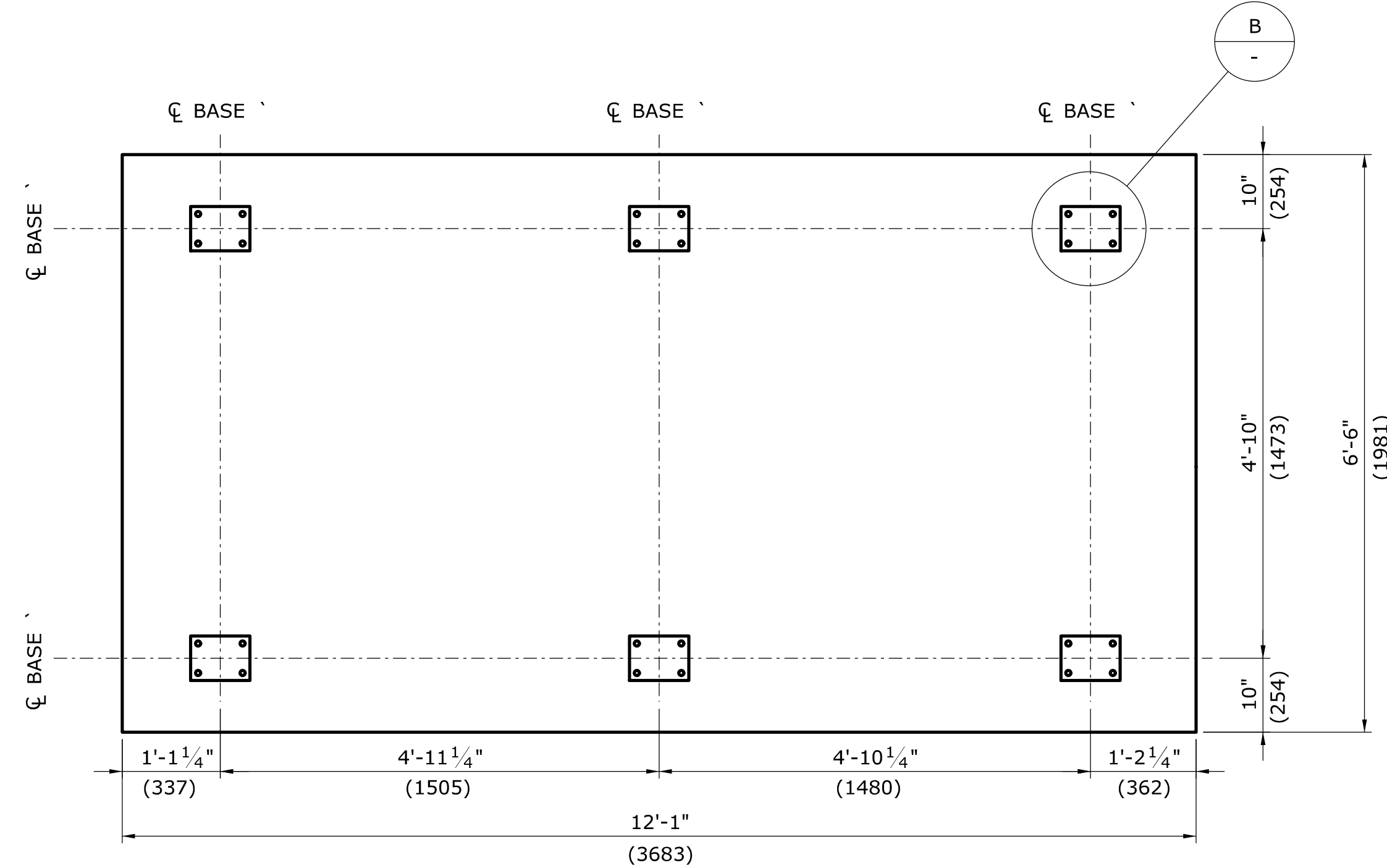


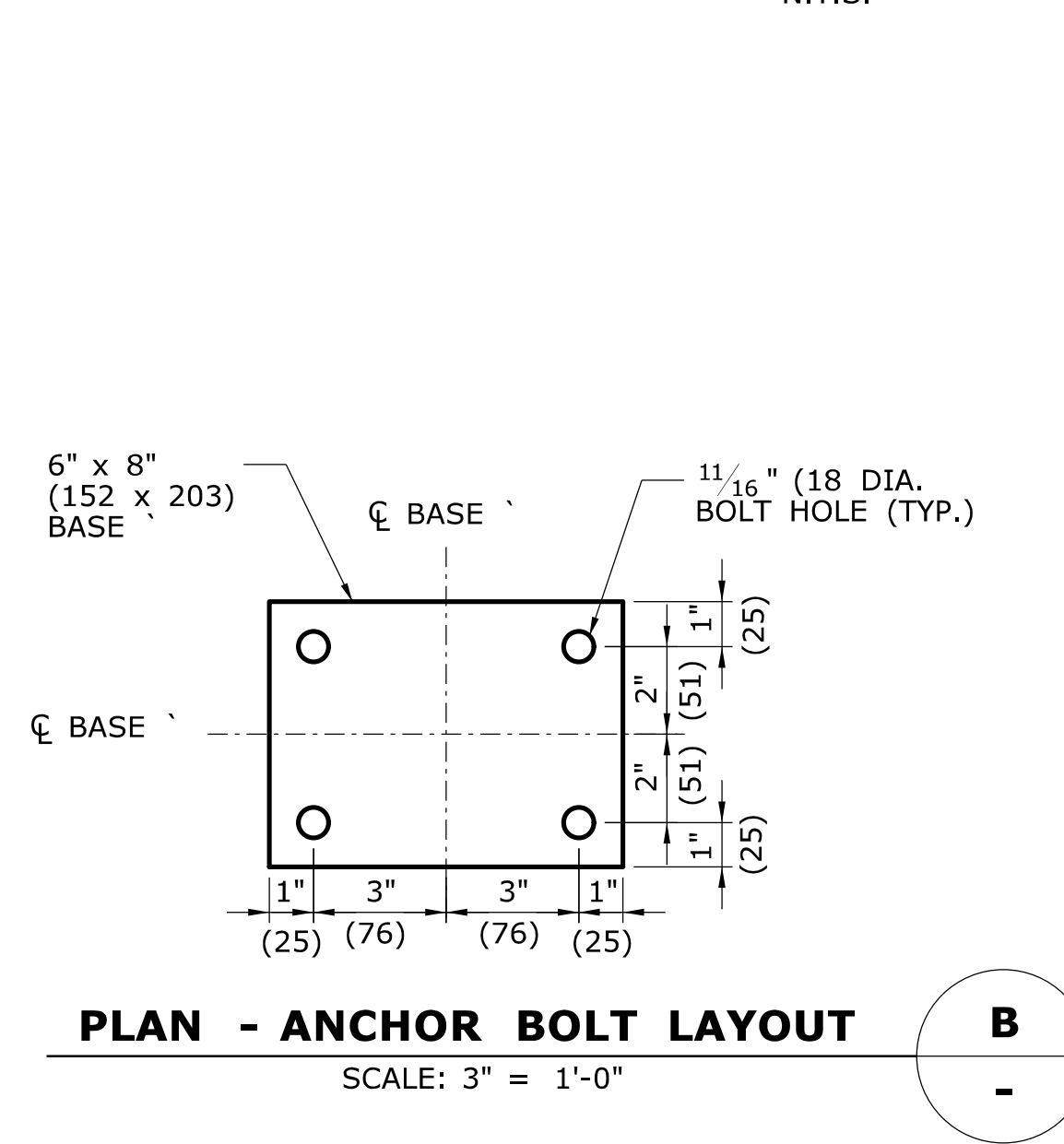
SIDE ELEVATION - PORTABLE VMS, SUPPORT FRAME AND FOUNDATION
N.T.S.



ELEVATION - PORTABLE VMS
N.T.S.

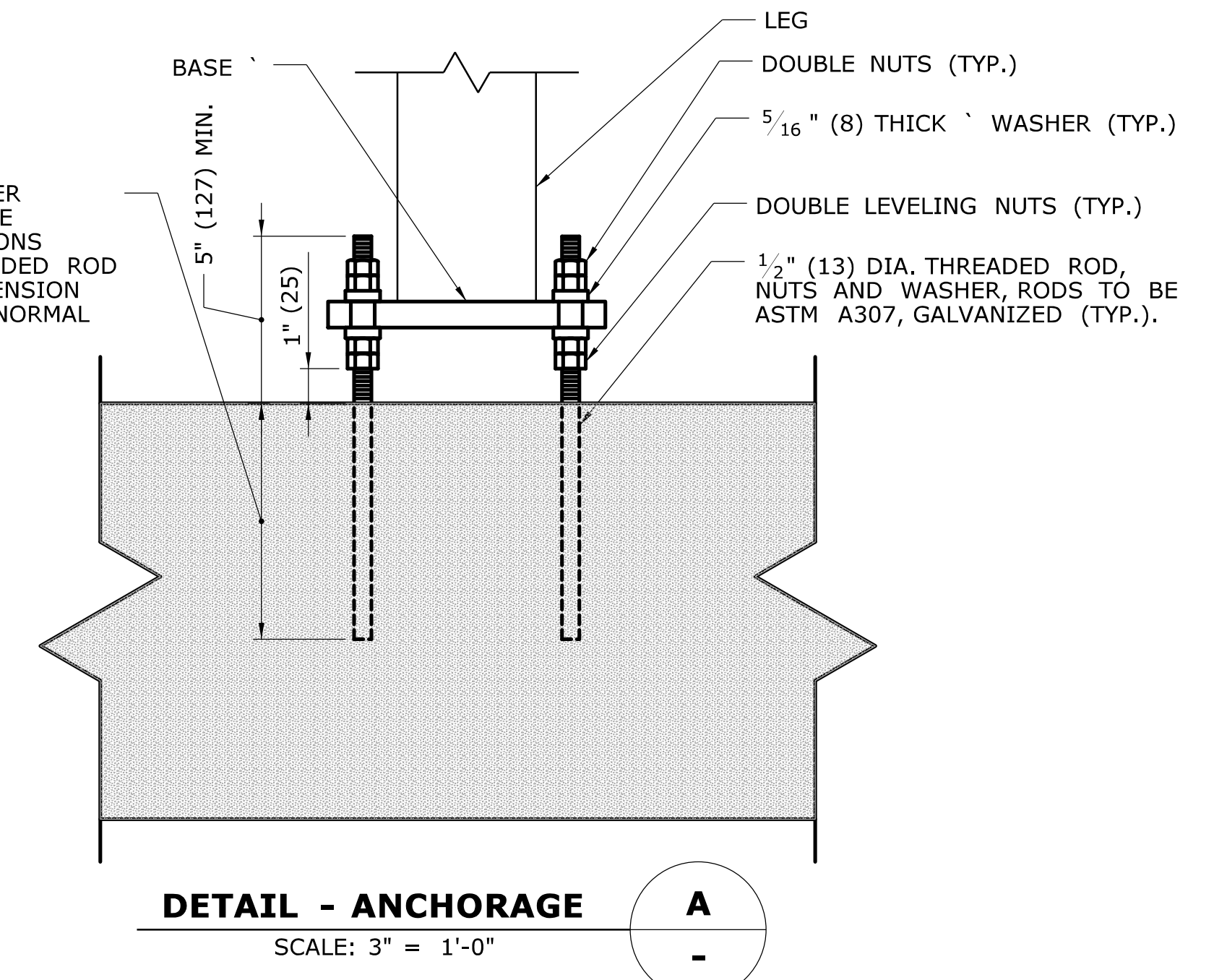


PLAN - PORTABLE VMS SUPPORT FOUNDATION
N.T.S.



PLAN - ANCHOR BOLT LAYOUT
SCALE: 3" = 1'-0"

DEPTH OF ELEMENT AND DIAMETER OF HOLE SHALL CONFORM TO THE MANUFACTURER'S RECOMMENDATIONS SUCH THAT THE GROUTED THREADED ROD WILL BE ABLE TO DEVELOP IN TENSION 100 PERCENT OF ITS SPECIFIED NORMAL YIELD STRENGTH.



DETAIL - ANCHORAGE
SCALE: 3" = 1'-0"

GENERAL NOTES

SPECIFICATIONS: STATE OF CONNECTICUT DEPARTMENT OF TRANSPORTATION STANDARD SPECIFICATIONS (FORM 816), SUPPLEMENTAL SPECIFICATIONS DATED JULY 2007 AND SPECIAL PROVISIONS.

DESIGN SPECIFICATIONS: AASHTO STANDARD SPECIFICATIONS FOR STRUCTURAL SUPPORTS FOR HIGHWAY SIGNS, LUMINAIRES AND TRAFFIC SIGNALS (2001) AND INTERIM SPECIFICATIONS THROUGH 2006, AS SUPPLEMENTED BY THE CONNECTICUT DEPARTMENT OF TRANSPORTATION BRIDGE DESIGN MANUAL (1997).

ALLOWABLE DESIGN STRESSES:
 PRECAST CONCRETE BASED ON $F'_c = 4000$ PSI (28 MPA)
 REINFORCEMENT (ASTM A615 (A615M) GRADE 60) $F_s = 24000$ PSI (165 MPA)
 STRUCTURAL STEEL (ASTM A307 GRADE 36) $F_y = 36000$ PSI (248 MPA)
 THREADED ROD (ASTM A307 GRADE 36) $F_y = 36000$ PSI (248 MPA)

BOLT HOLES: ALL BOLT HOLES IN BASE PLATE OF SUPPORT FRAME SHALL BE OVERSIZE HOLES (3/16" (5MM) LARGER THAN BOLT DIAMETER) UNLESS OTHERWISE NOTED.

WIND LOAD: 110 MPH (177 KMH), BASED ON 3 SECOND WIND GUST.

DIMENSIONS: DIMENSIONS SHOWN IN PARENTHESES ARE THE METRIC EQUIVALENTS, IN MILLIMETERS, OF THE U.S. CUSTOMARY UNITS SHOWN. WHEN DIMENSIONS ARE GIVEN TO LESS THAN THREE DECIMAL PLACES, THE OMITTED DIGITS SHALL BE ASSUMED TO BE ZEROS.

THE FOUNDATION SHALL BE PRECAST CONCRETE. THE CONTRACTOR SHALL SUBMIT HIS MIX DESIGN TO THE ENGINEER FOR APPROVAL BEFORE FABRICATION.

THE CONTRACTOR SHALL BE RESPONSIBLE FOR THE PROPER PLACEMENT OF THREADED RODS. HE MAY USE THE PORTABLE VMS SUPPORT FRAME AS A TEMPLATE FOR LOCATION OF HOLES TO BE DRILLED. IT IS CRITICAL THAT THE RODS BE PERPENDICULAR TO THE TOP OF FOUNDATION.

THE COST OF FOUNDATION, INCLUDING REINFORCEMENT, CONCRETE AND ANCHORAGE MATERIALS, SHALL BE PAID FOR UNDER THE ITEM "PORTABLE VMS SUPPORT FOUNDATION".

THE COST OF FURNISHING AND PLACING SPECIAL RIPRAP SHALL BE PAID AS "SPECIAL RIPRAP".

NOTICE TO CONTRACTOR

THE DETAILS AND DIMENSIONS SHOWN FOR THE PORTABLE VMS SUPPORT AND TRAILER HAVE BEEN REPRODUCED FROM INFORMATION SUPPLIED BY DAKTRONICS. THE CONTRACTOR SHALL COORDINATE THE LOCATION AND LAYOUT OF THE ANCHORAGES WITH THE SUPPLIER OF THE TRAILER, CHANGES TO THE DIMENSIONS SHOWN SHALL BE REPORTED TO THE ENGINEER BEFORE CONSTRUCTING THE FOUNDATION.

ESTIMATED QUANTITIES

ITEM	UNIT	QUANTITY
SPECIAL RIPRAP	CU. M.	7
PORTABLE VMS SUPPORT FOUNDATION	EACH	1

REV.	DATE	REVISION DESCRIPTION	SHEET NO.

DESIGNER/DRAFTER: -
 CHECKED BY: -
 THE INFORMATION, INCLUDING ESTIMATED QUANTITIES OF WORK, SHOWN ON THESE SHEETS IS BASED ON LIMITED INVESTIGATIONS BY THE STATE AND IS IN NO WAY WARRANTED TO INDICATE THE CONDITIONS OF ACTUAL QUANTITIES OF WORK WHICH WILL BE REQUIRED.

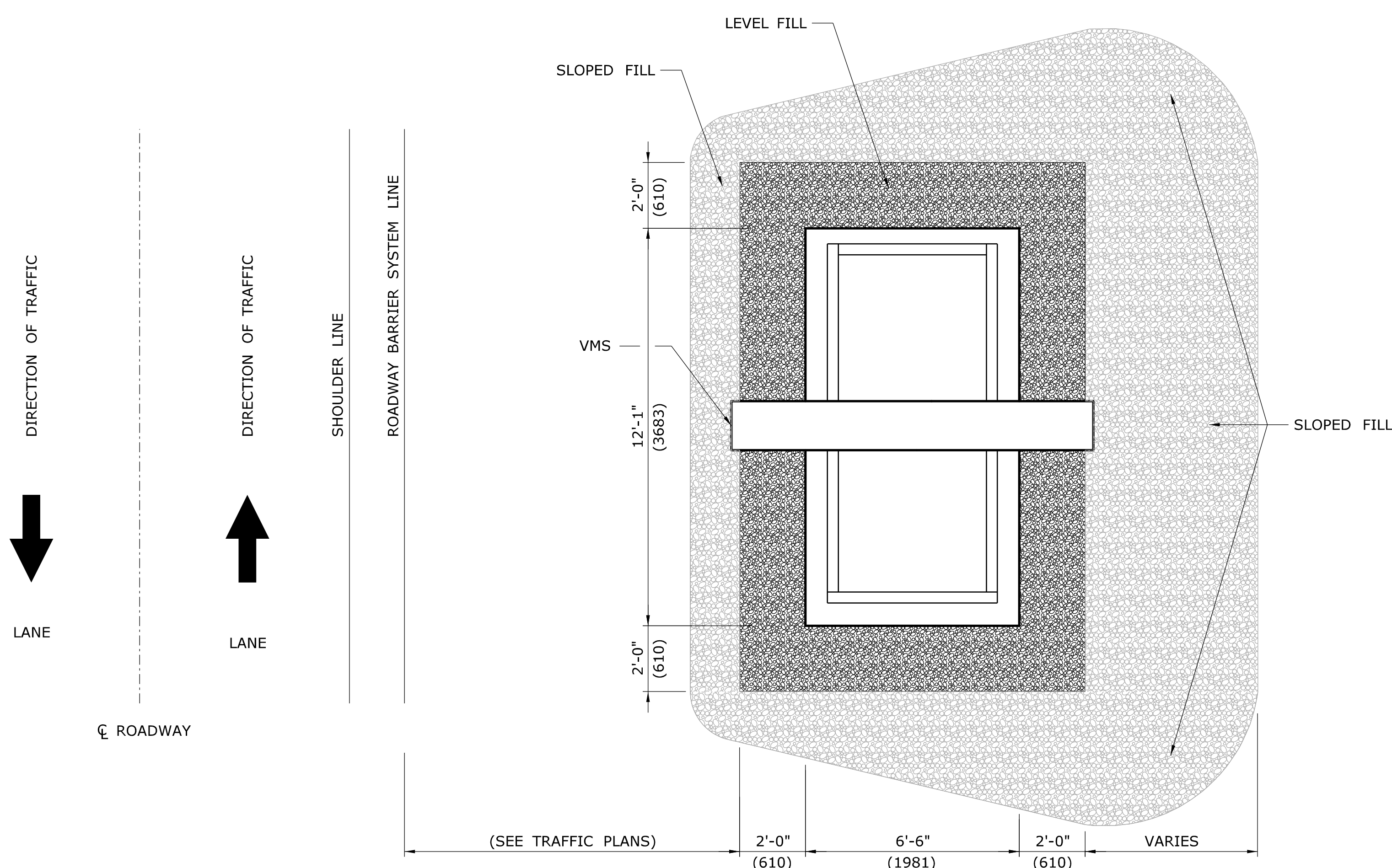
STATE OF CONNECTICUT
DEPARTMENT OF TRANSPORTATION

SIGNATURE/BLOCK: -
OFFICE OF ENGINEERING
 APPROVED BY: - DATE: -

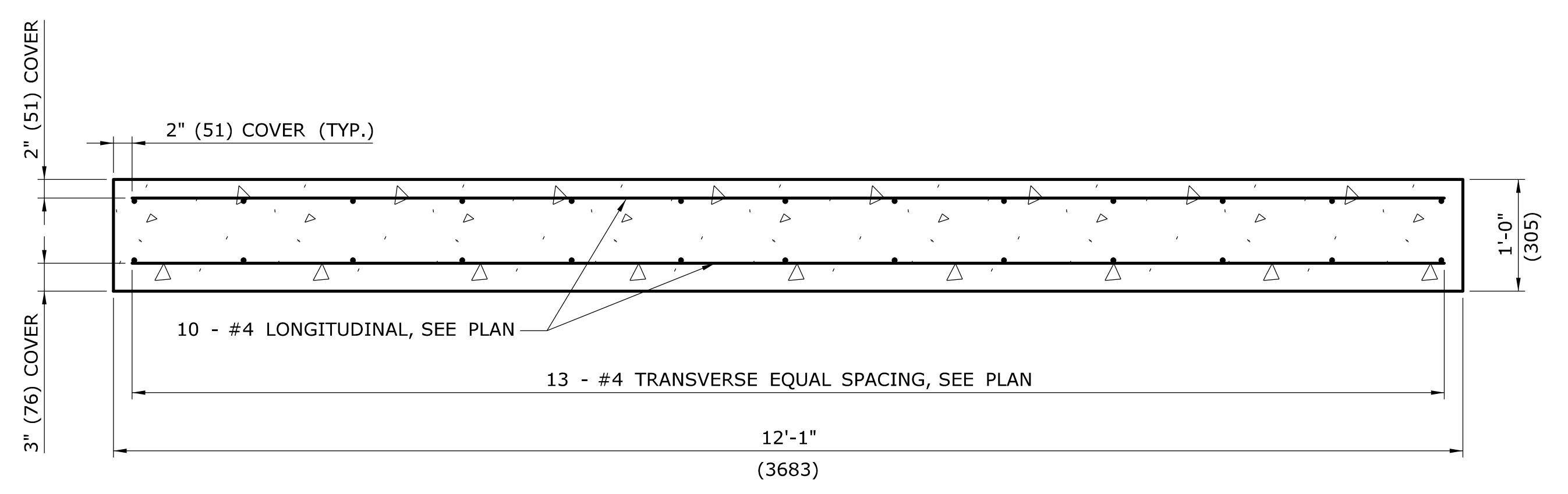
PROJECT TITLE: -
 TOWN: -

DRAWING TITLE:
PORTABLE VMS SUPPORT FOOTING DETAILS

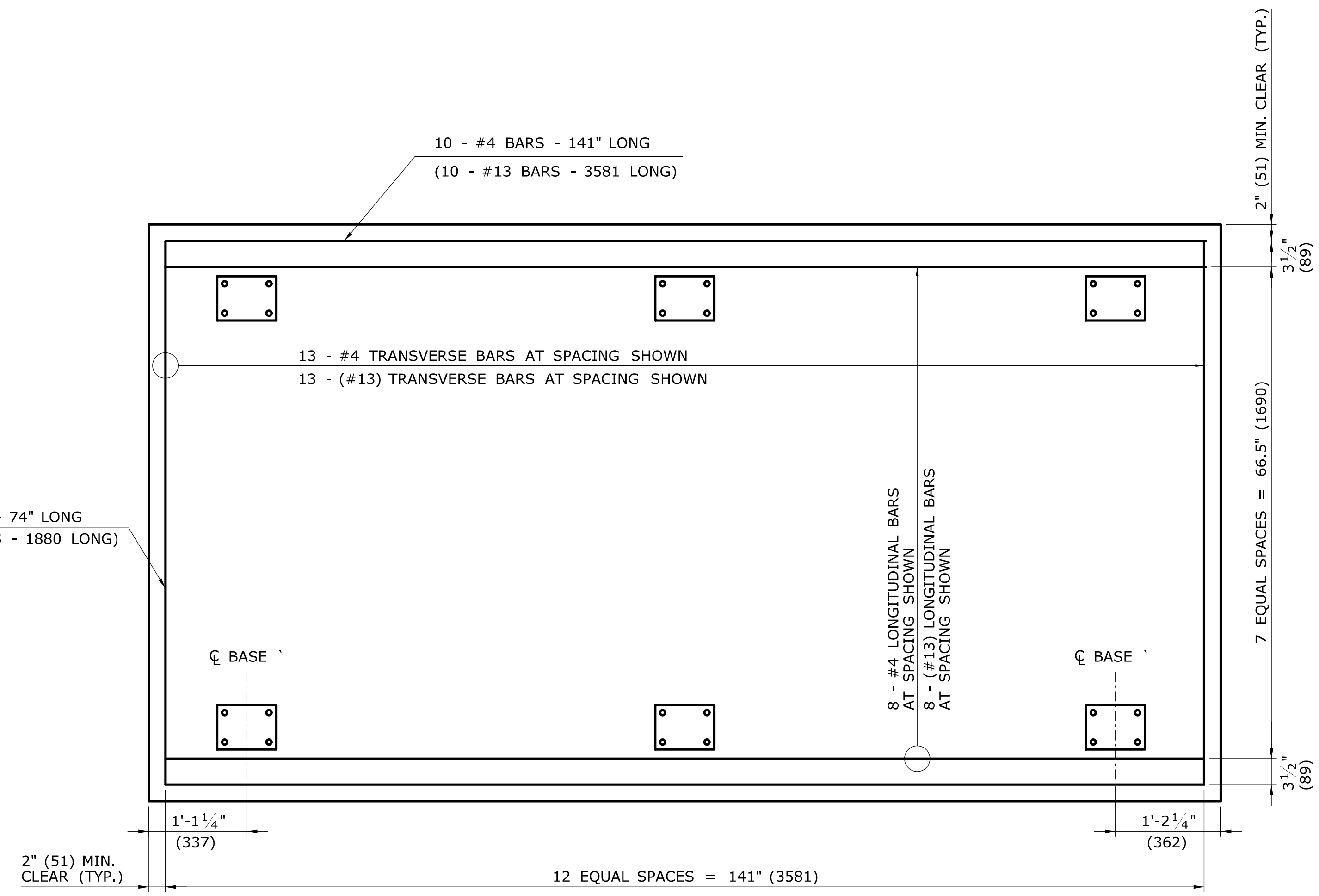
PROJECT NO. -
 DRAWING NO. **PVMS-1**
 SHEET NO. **\$\$\$**



PLAN - PORTABLE VMS AND FOUNDATION
N.T.S.

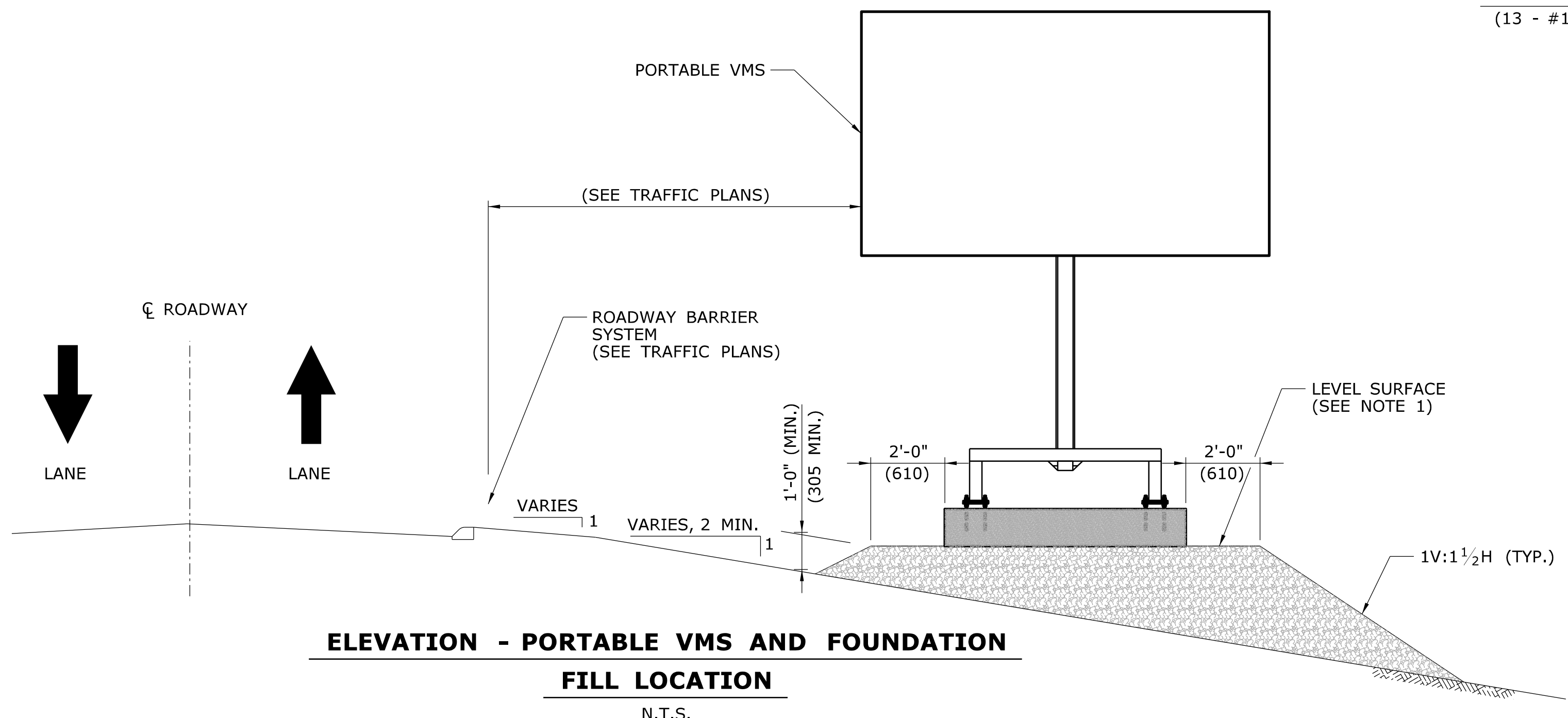


SECTION - PORTABLE VMS SUPPORT FOUNDATION REINFORCEMENT
SCALE: 1" = 1'-0"



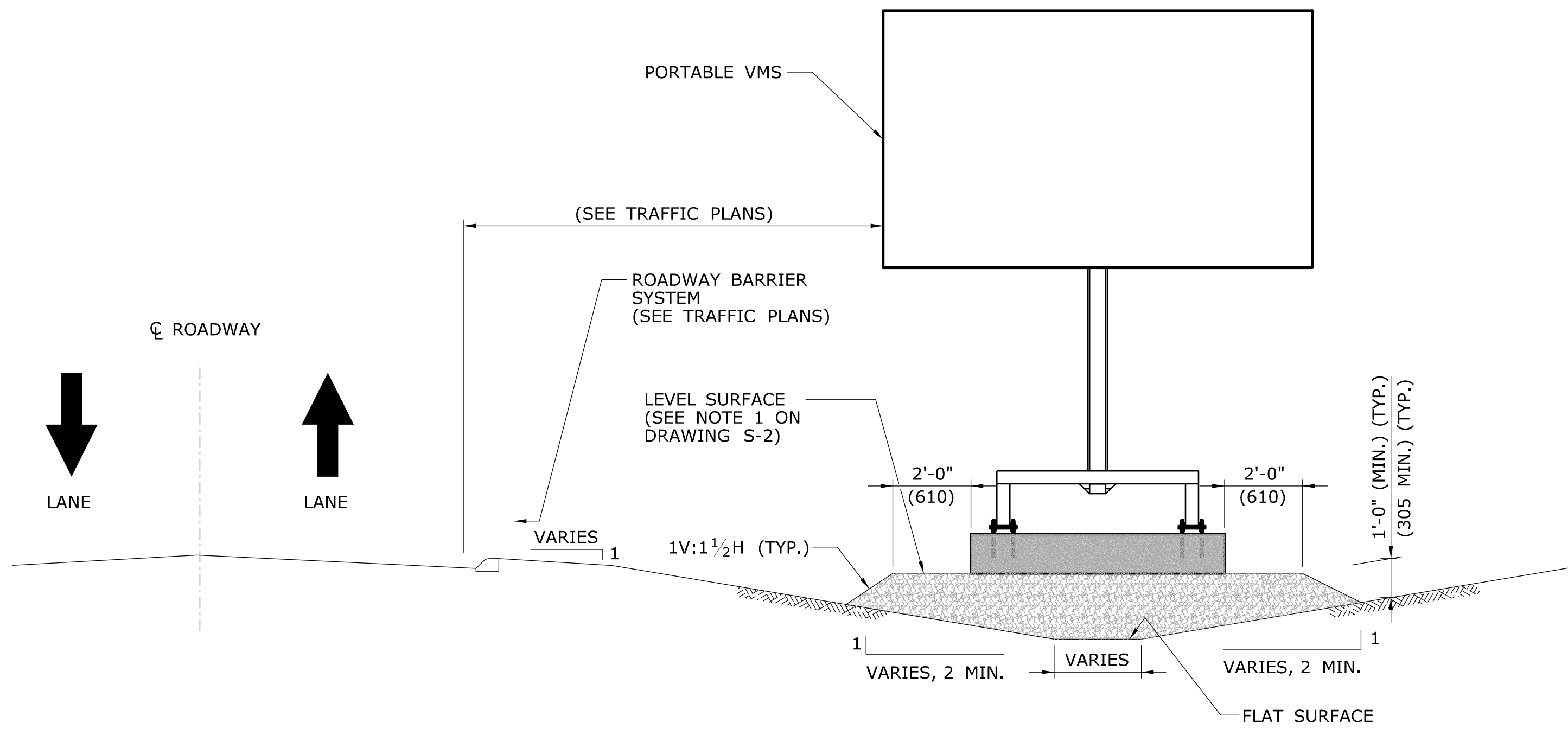
PLAN - PORTABLE VMS SUPPORT FOUNDATION REINFORCEMENT
SCALE: 1" = 1'-0"

- NOTES
- WHERE UNSUITABLE CONDITIONS EXIST UPON WHICH TO FOUND THE VMS SUPPORT FOUNDATION, THE ENGINEER WILL DETERMINE HOW TO PROCEED. A LEVEL SURFACE IS REQUIRED AND WILL GENERALLY BE CREATED BY PLACING SPECIAL RIPRAP IN ACCORDANCE WITH STANDARD FORM 816, SECTION 7.03.
 - THE REINFORCING HAS BEEN LOCATED TO CLEAR THE THREADED RODS. SHOULD THE ANCHORAGE LOCATION NEED TO BE REVISED, THE CONTRACTOR SHALL COORDINATE THE PLACEMENT OF REINFORCING WITH THE REVISED THREADED RODS LOCATION.

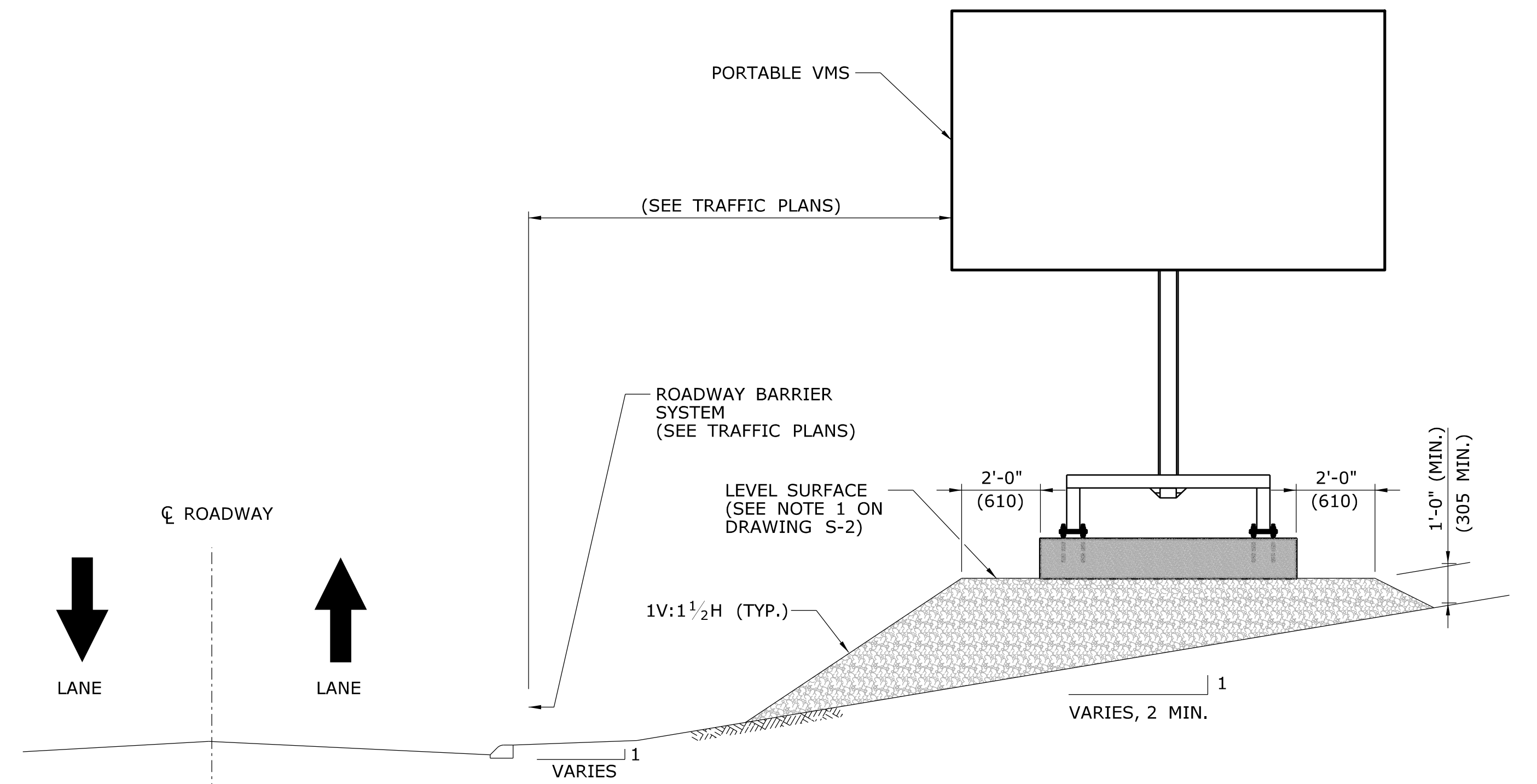


ELEVATION - PORTABLE VMS AND FOUNDATION
FILL LOCATION
N.T.S.

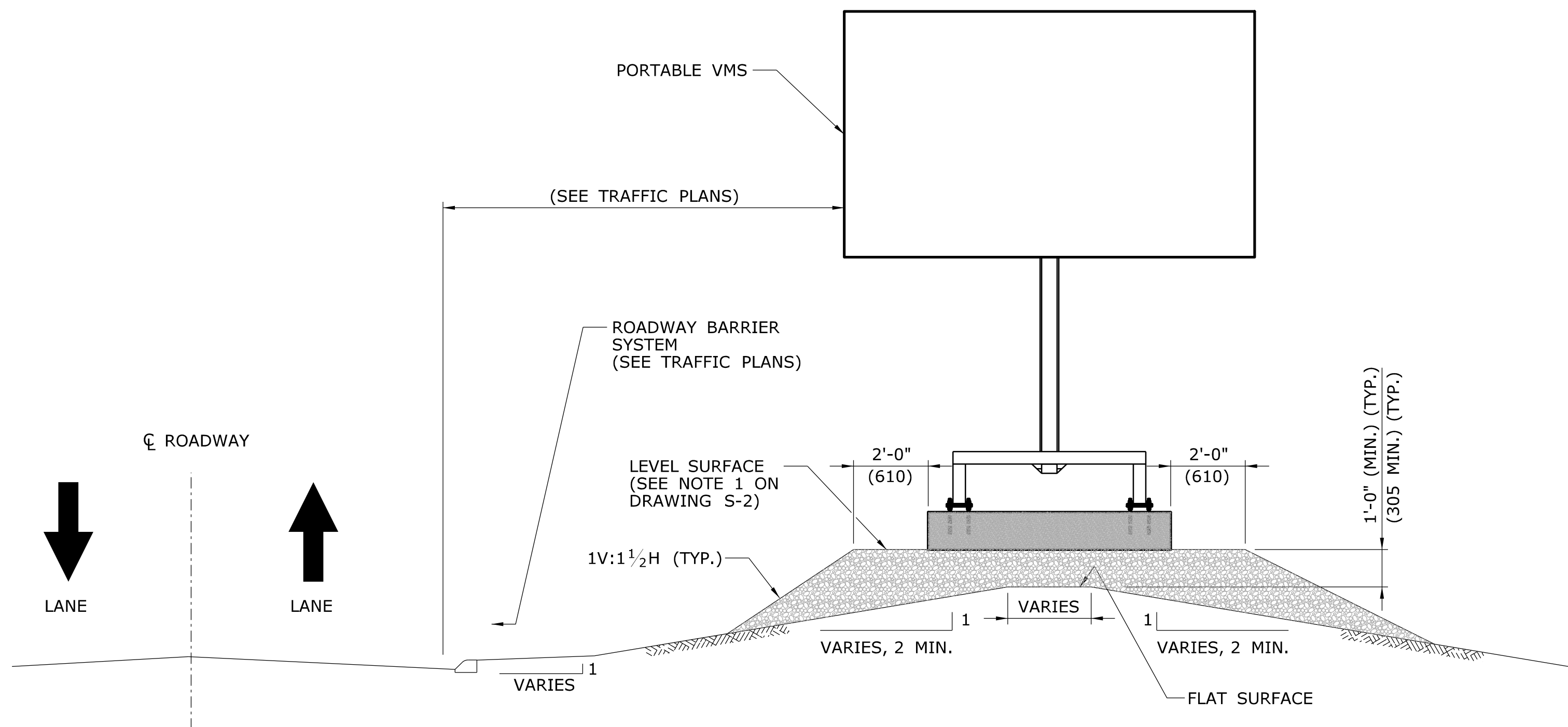
REV.	DATE	REVISION DESCRIPTION	SHEET NO.	Plotted Date: 1/5/2010	DESIGNER/DRAFTER: -	CHECKED BY: -	<p>STATE OF CONNECTICUT DEPARTMENT OF TRANSPORTATION</p>	SIGNATURE/ BLOCK: - APPROVED BY: DATE:	PROJECT TITLE:	TOWN:	PROJECT NO.:
							<p>OFFICE OF ENGINEERING</p>				DRAWING NO. PVMS-2 SHEET NO. \$\$\$



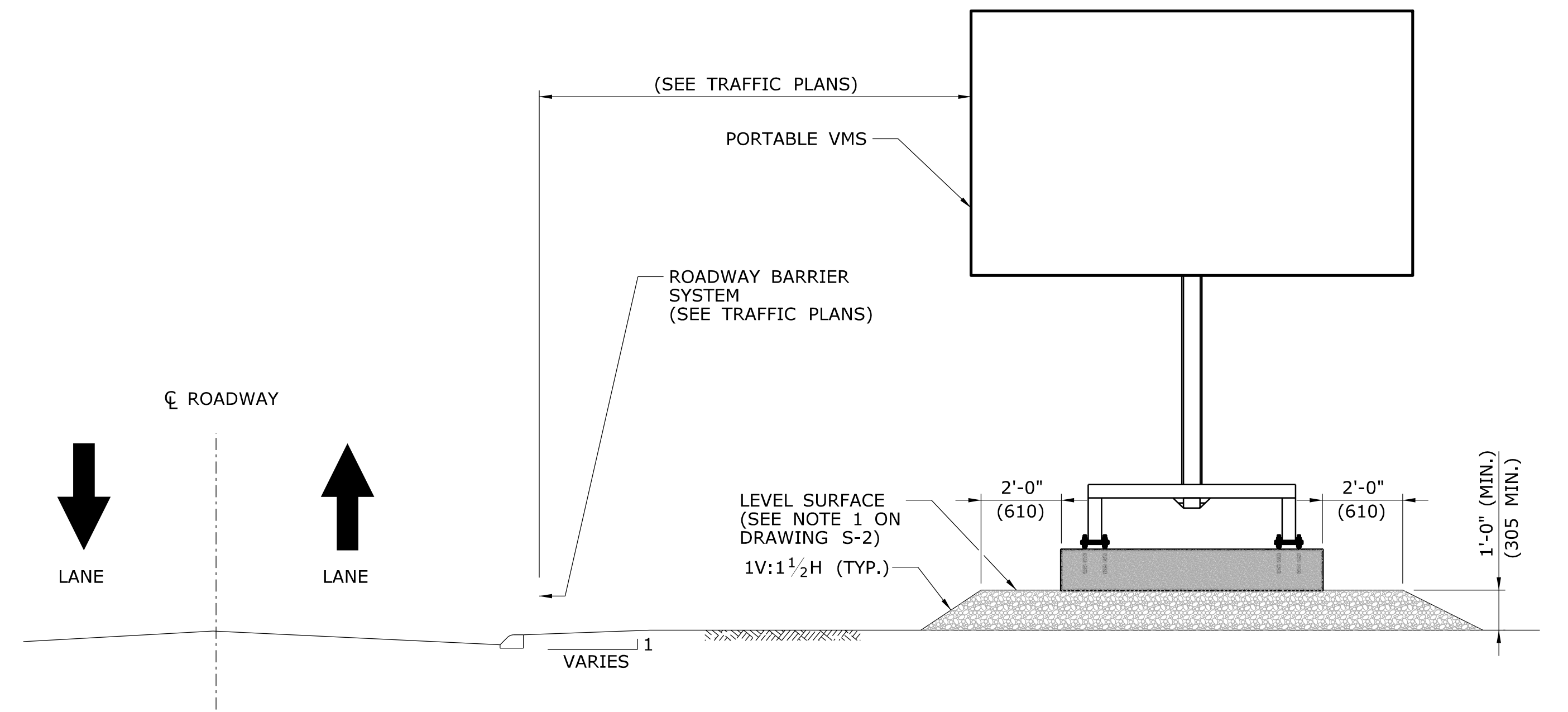
**ELEVATION - PORTABLE VMS AND FOUNDATION
INTERSECTING SLOPES - FILL LOCATION**
N.T.S.



**ELEVATION - PORTABLE VMS AND FOUNDATION
CUT LOCATION**
N.T.S.



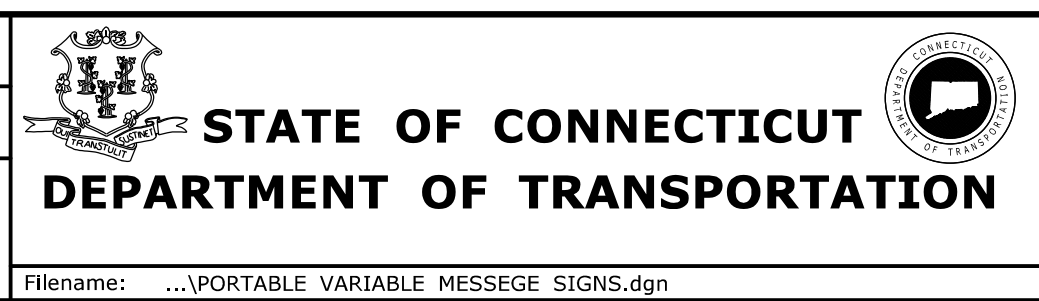
**ELEVATION - PORTABLE VMS AND FOUNDATION
INTERSECTING SLOPES - CUT LOCATION**
N.T.S.



**ELEVATION - PORTABLE VMS AND FOUNDATION
FLAT LOCATION**
N.T.S.

REV.	DATE	REVISION DESCRIPTION	SHEET NO.

DESIGNER/DRAFTER: -
CHECKED BY: -
SCALE AS NOTED



SIGNATURE/BLOCK: -
APPROVED BY: - DATE: -

PROJECT TITLE: -
TOWN: -

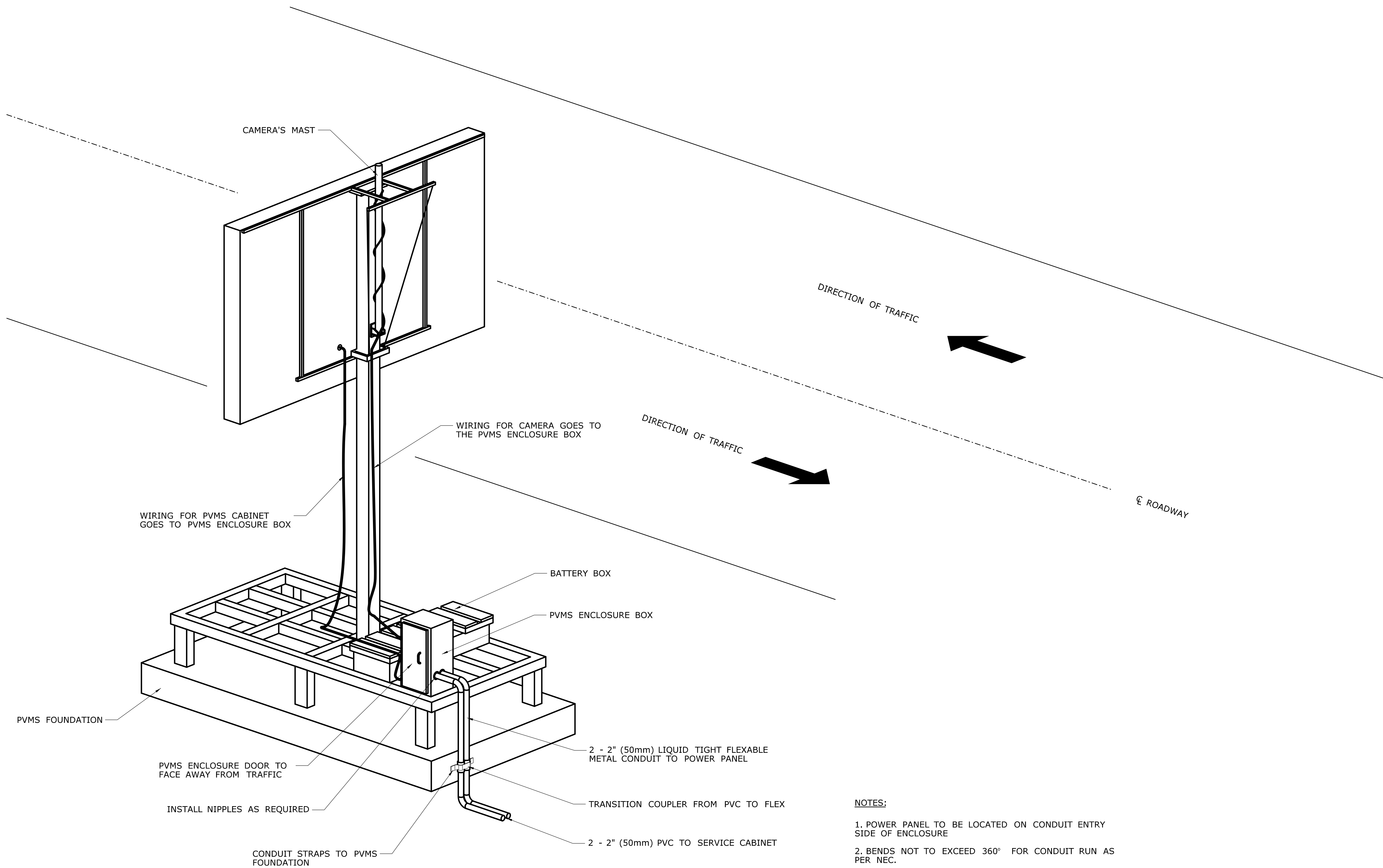
DRAWING TITLE:
**PORTABLE VMS SUPPORT
FOUNDATION DETAILS**

PROJECT NO. -
DRAWING NO. -
PVMS-3
SHEET NO. -
\$\$\$

THE INFORMATION, INCLUDING ESTIMATED QUANTITIES OF WORK, SHOWN ON THESE SHEETS IS BASED ON LIMITED INVESTIGATIONS BY THE STATE AND IS IN NO WAY WARRANTED TO INDICATE THE CONDITIONS OF ACTUAL QUANTITIES OF WORK WHICH WILL BE REQUIRED.

Plotted Date: 1/5/2010

Filename: ...PORTABLE VARIABLE MESSAGE SIGNS.dgn




ISOMETRIC VIEW
N.T.S.

- NOTES:**
1. POWER PANEL TO BE LOCATED ON CONDUIT ENTRY SIDE OF ENCLOSURE
 2. BENDS NOT TO EXCEED 360° FOR CONDUIT RUN AS PER NEC.

REV.	DATE	REVISION DESCRIPTION	SHEET NO.

DESIGNER/DRAFTER: -
CHECKED BY: -
SCALE AS NOTED


STATE OF CONNECTICUT
DEPARTMENT OF TRANSPORTATION

Filename: ...PORTABLE VARIABLE MESSAGE SIGNS.dgn

SIGNATURE/BLOCK: -
APPROVED BY: - DATE: -

PROJECT TITLE: -

TOWN: -
DRAWING TITLE:
PORTABLE VMS SUPPORT ISOMETRIC VIEW

PROJECT NO. -
DRAWING NO. **PVMS-4**
SHEET NO. **\$\$\$**