

**XX - STRUCTURES - SPAN POLES
INDEX OF DRAWINGS**

DRAWING NUMBER	DRAWING TITLE	DRAWING NUMBER	DRAWING TITLE
SP-1	INDEX OF DRAWINGS		
SP-2	STEEL SPAN POLE ELEVATION		
SP-3	STEEL SPAN POLE DETAILS		
SP-4	STEEL SPAN POLE FOUNDATION DETAILS		

NOTE TO DESIGNERS:

1 - DESIGNERS SHOULD PERFORM THE BELOW LISTED EDITS ON THE PDF FOR SUBMISSION.

- DOUBLE CLICK ON TEXT "XX" TO EDIT SUBSET NUMBER IN THE INDEX OF DRAWING BLOCK.

- DOUBLE CLICK ON TEXT "INSERT" AND "XXXX-XXXX" TO EDIT THE PROJECT SPECIFIC INFORMATION IN THE TITLE BLOCK. RIGHT CLICK ON THE TEXT AND "APPLY TO PAGES" TO COPY THE INFORMATION TO ALL DRAWINGS.

2 - DESIGNERS SHOULD ADD PAGE LABELS, SHEET NUMBERS, WATERMARKS AND DIGITAL SIGNATURE FIELD TO THE PDF AND FLATTEN THIS DOCUMENT IN ACCORDANCE WITH THE LATEST VERSION OF CTDOT DIGITAL PROJECT DEVELOPMENT MANUAL.

3 - DELETE THIS TEXT BOX BEFORE SUBMITTING.

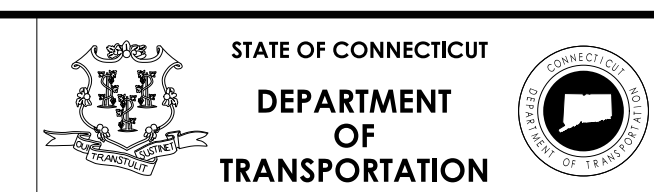
THE DESIGN APPEARS TO CONFORM TO APPLICABLE CRITERIA. APPROVAL IS NOT TO BE CONSTRUED TO MEAN THAT ALL ASPECTS OF THE DESIGN HAVE BEEN PERSONALLY CHECKED BY THE UNDERSIGNED.

TRANSPORTATION PRINCIPAL ENGINEER

REV.	DATE	REVISION DESCRIPTION

DESIGNER/DRAFTER: INSERT CHECKED BY: INSERT

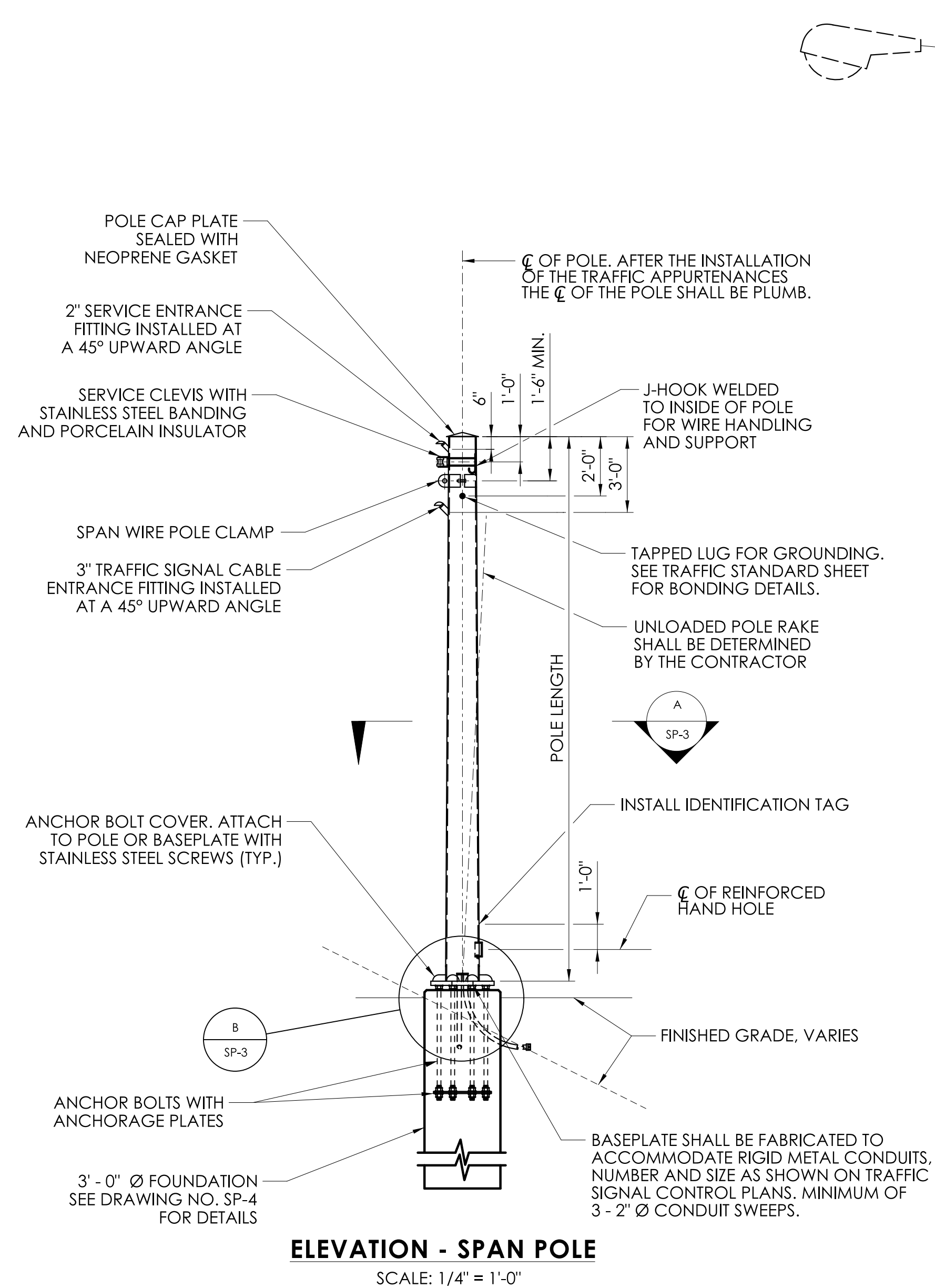
SIGNATURE/
BLOCK:



PROJECT NUMBER: XXXX-XXXX
PROJECT DESCRIPTION: INSERT
TOWN(S): INSERT
DRAWING TITLE: INDEX OF DRAWINGS

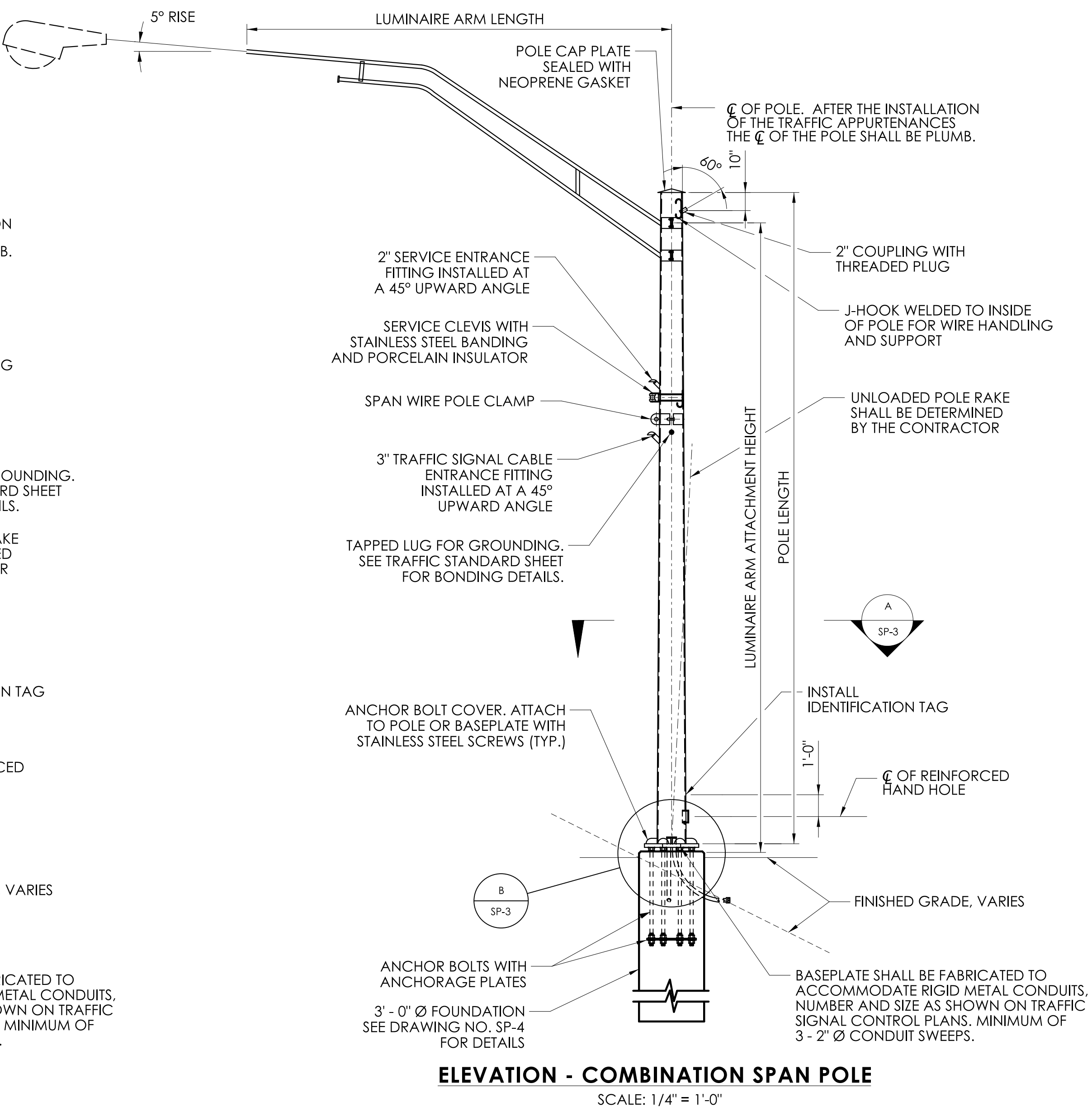
DRAWING NO.
SP-1
SHEET NO.

LASTED SAVED BY: FILE NAME:
PLOTTED DATE: 6/6/2023



ELEVATION - SPAN POLE

SCALE: 1/4" = 1'-0"



ELEVATION - COMBINATION SPAN POLE

SCALE: 1/4" = 1'-0"

SPAN POLE NOTES

THE SPAN POLE CONFIGURATION, INCLUDING THE ANCHORAGE TO THE FOUNDATION, SHALL BE DESIGNED, FABRICATED AND INSTALLED BY THE CONTRACTOR, IN ACCORDANCE WITH THE SPECIAL PROVISION "XX STEEL SPAN POLE" OR "COMBINATION STEEL SPAN POLE". SPAN WIRE(S) SHALL BE DESIGNED AND INSTALLED BY THE CONTRACTOR IN ACCORDANCE WITH THE SPECIAL PROVISION "SPAN WIRE".

THE SPAN WIRE CONFIGURATION, INCLUDING THE POLE HEIGHT, SPAN WIRE ORIENTATION, AND THE LOCATIONS OF TRAFFIC APPURTENANCES SUPPORTED BY THE STRUCTURE ARE SHOWN ON THE TRAFFIC CONTROL SIGNAL PLAN. PRIOR TO DESIGN OF EACH SPAN POLE CONFIGURATION, THE CONTRACTOR SHALL PREPARE A LAYOUT DRAWING BASED ON A FIELD SURVEY AND THE CONTRACT DOCUMENTS TO VERIFY THE SPAN POLES AND SPAN WIRES WHEN INSTALLED WILL MEET THE GEOMETRIC AND CLEARANCE REQUIREMENTS IN THE CONTRACT DOCUMENTS. IF THE REQUIREMENTS CANNOT BE MET, THE CONTRACTOR SHALL NOTIFY THE ENGINEER.

THE SPAN POLE CONFIGURATION SHALL BE DESIGNED IN ACCORDANCE WITH THE LATEST EDITION OF THE AASHTO LRFD SPECIFICATIONS FOR STRUCTURAL SUPPORTS FOR HIGHWAY SIGNS, LUMINAIRES AND TRAFFIC SIGNALS, INCLUDING THE LATEST INTERIM SPECIFICATIONS, AS AMENDED BY THE SPECIAL PROVISION "XX STEEL SPAN POLE" OR "COMBINATION STEEL SPAN POLE".

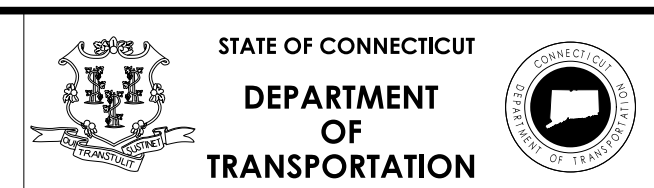
THE SPAN POLE CONFIGURATION SHALL BE DESIGNED TO SUPPORT TRAFFIC APPURTENANCES WITH PROPERTIES NO LESS THAN THOSE SHOWN ON THE TRAFFIC PLANS.

REV.	DATE	REVISION DESCRIPTION

DESIGNER/DRAFTER: _____ CHECKED BY: _____
 LASTED SAVED BY: _____ FILE NAME: _____
 PLOTTED DATE: 6/6/2023

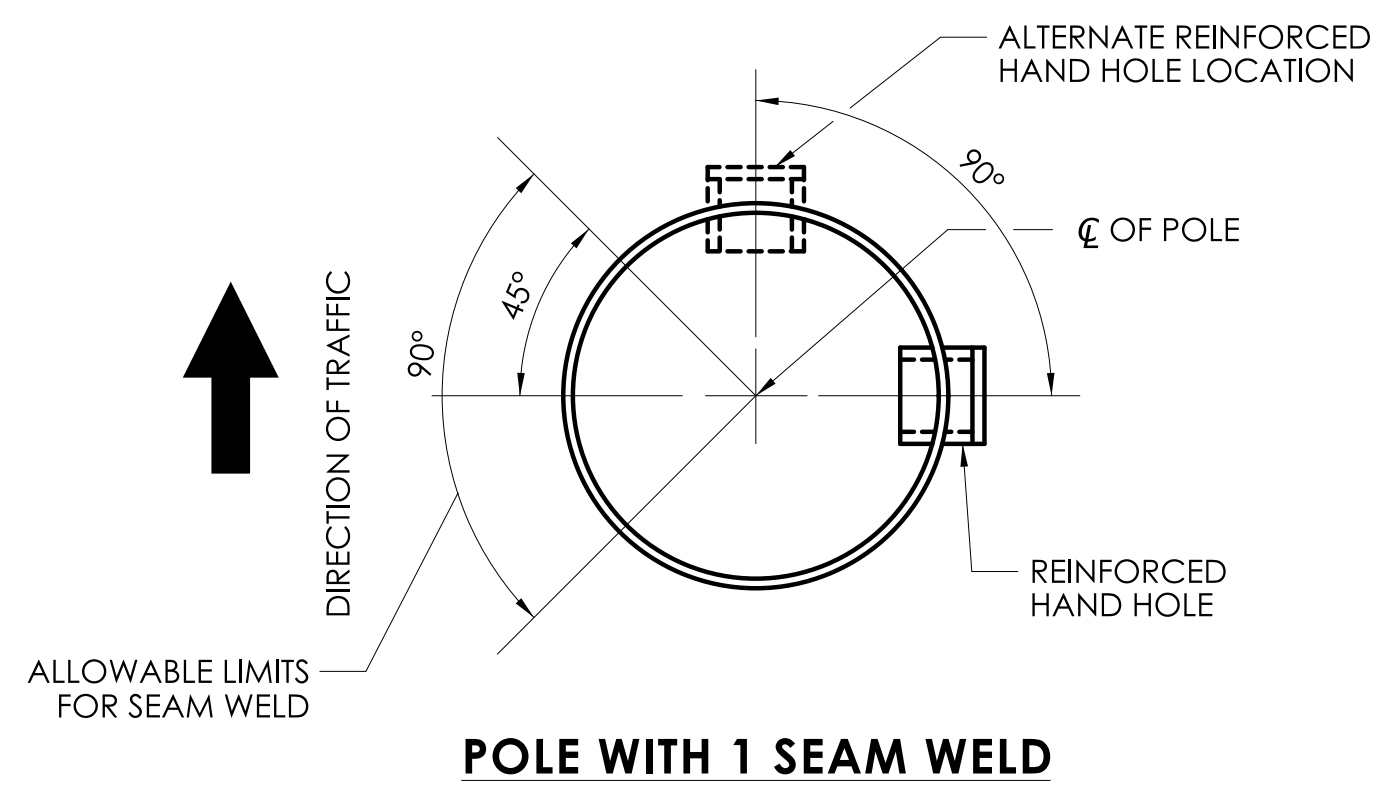
SCALE AS NOTED

SIGNATURE/BLOCK: _____

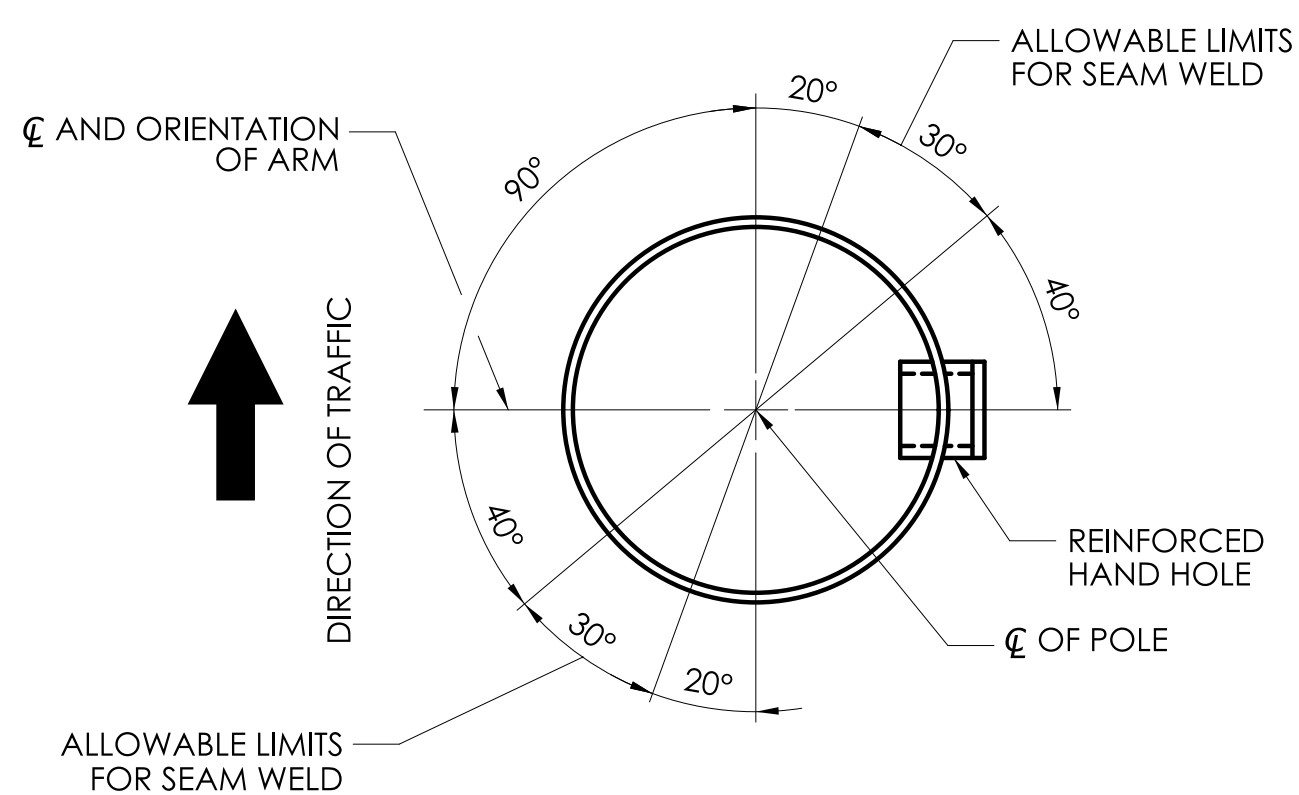


PROJECT NUMBER: _____
 PROJECT DESCRIPTION: _____
 TOWN(S): _____
 DRAWING TITLE: STEEL SPAN POLE ELEVATION

DRAWING NO. SP-2
 SHEET NO. _____

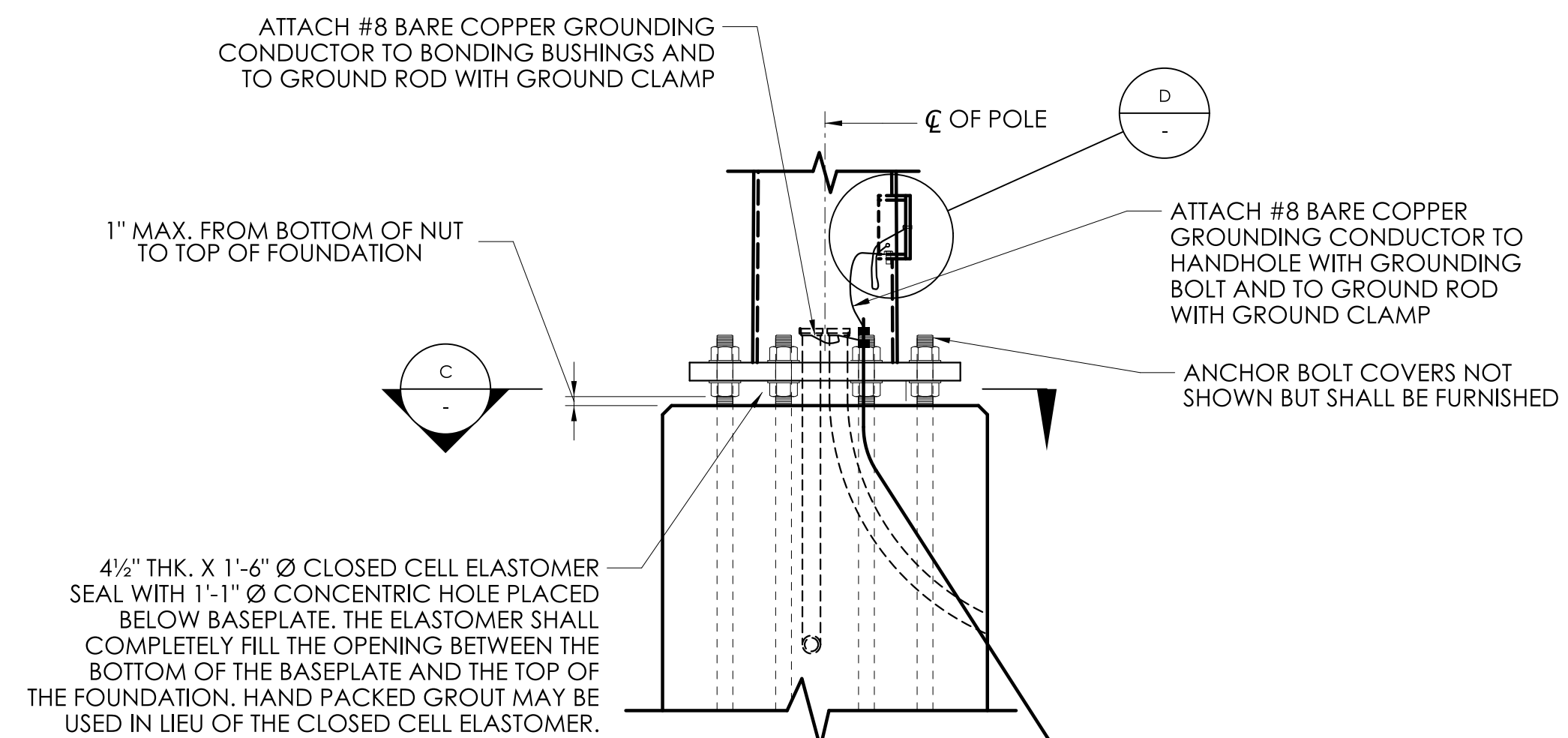


POLE WITH 1 SEAM WELD

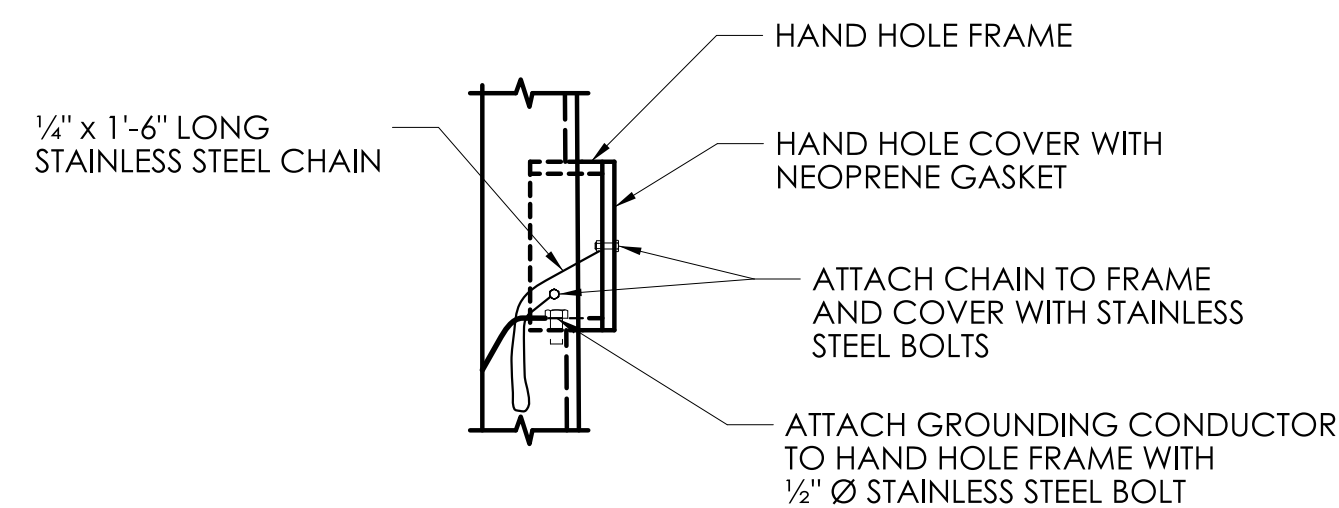


POLE WITH 2 SEAM WELDS

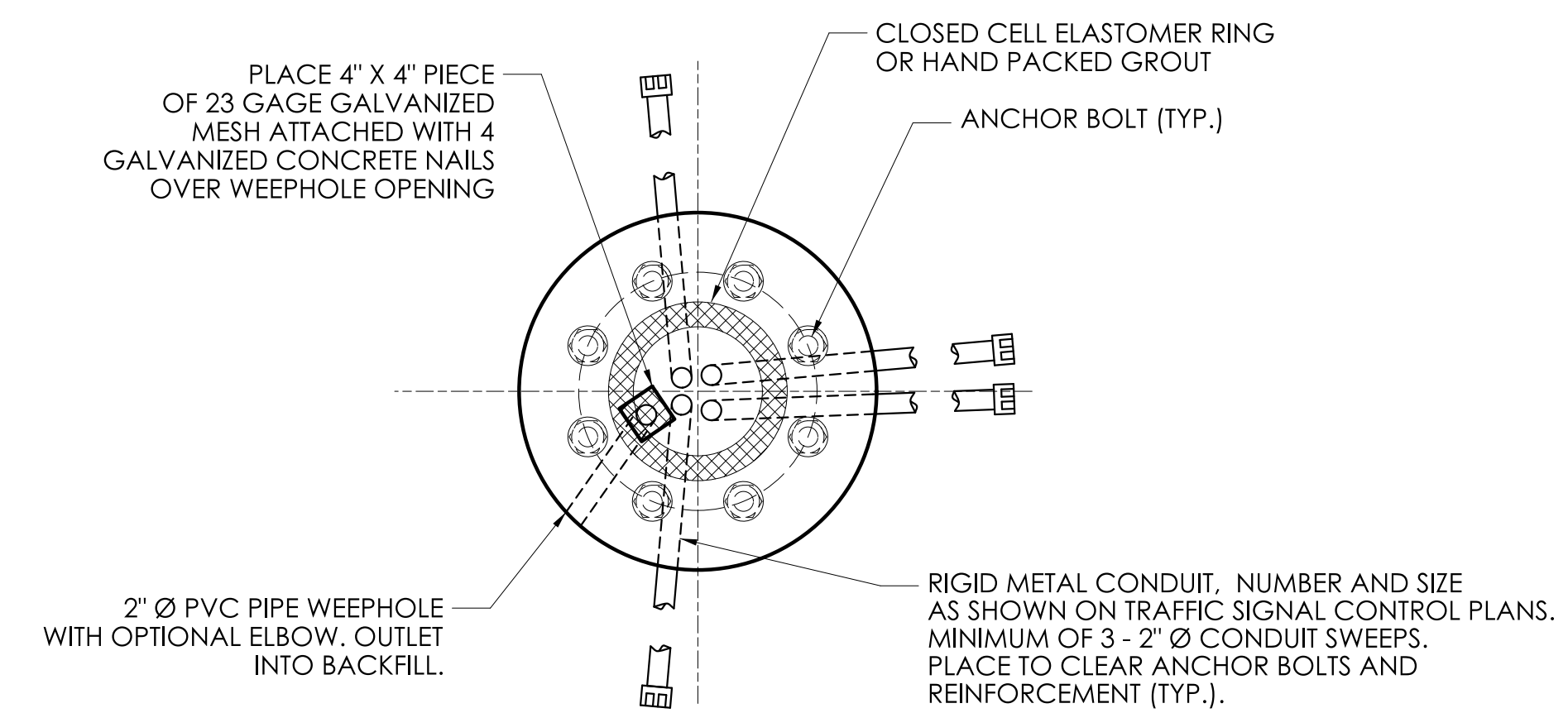
SECTION
SCALE: 1 1/2" = 1'-0"
A
SP-2



DETAIL
SCALE: 3/4" = 1'-0"
B
SP-2



DETAIL
SCALE: 1 1/2" = 1'-0"
D
SP-2



SECTION
SCALE: 3/4" = 1'-0"
C
SP-2

ATTACH TAG TO POLE AND ARM WITH SELF-TAPPING TAMPER RESISTANT STAINLESS STEEL SCREWS (TYP.)

• IDENTIFICATION NUMBER:
• MANUFACTURER:
• DATE OF MANUFACTURE: MM/YY
•

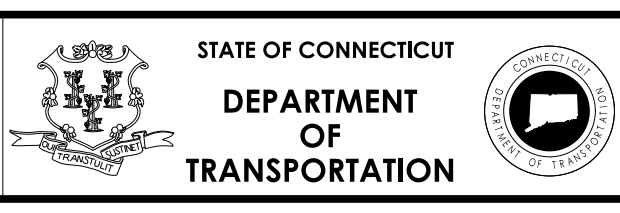
IDENTIFICATION TAG - N.T.S.

REV.	DATE	REVISION DESCRIPTION

DESIGNER/DRAFTER: _____ CHECKED BY: _____
LASTED SAVED BY: _____ FILE NAME: _____
PLOTTED DATE: 6/6/2023

SCALE AS NOTED

SIGNATURE/BLOCK: _____



PROJECT NUMBER: _____
PROJECT DESCRIPTION: _____
TOWN(S): _____
DRAWING TITLE: STEEL SPAN POLE DETAILS

DRAWING NO. SP-3
SHEET NO. _____

