

**I-691 Resurfacing, Bridge Rehabilitation and Safety  
Improvements Project  
Project No. 0079-0244**

***90 Day Lookahead***

Over the next 90 days, on the I-691 Resurfacing, Bridge Rehabilitation and Safety Improvements Project, crews will move traffic barricades to I-691 WB and finish bridge end blocks on all stages of I-691 EB. End block reconstruction will continue along I-691 EB Columbia Avenue and Lewis Avenue bridges. Once complete, crews will continue end block reconstruction along I-691 WB. Crews will also reset catch basins along I-691 EB. Line striping will continue, as needed, throughout the project limits.

Crews will continue concrete pavement replacement on Stages 1-4 of I-691 WB and ramps through October. Crews will also continue partial and full depth patching on bridge decks for Stages 2-4 on I-691 EB until late September. Then crews will begin on Stage 1 bridge decks on I-691 WB through October.

In August, crews will be cleaning and inspecting the cured in place pipe lining,

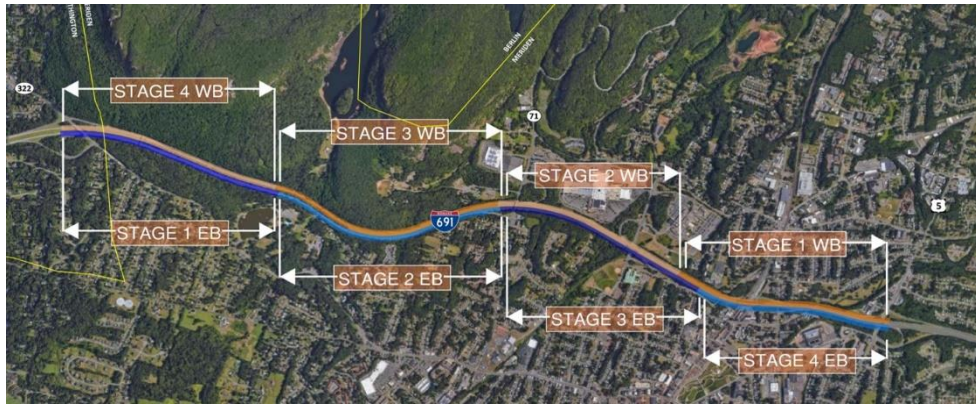
In August and September crews will continue saw cutting for roadway patching. Crews will also continue light pole installation and trench and back fill operations along I-691 EB and once complete, crews will move to I-691 WB. Cable and duct installation will be conducted following trenching operations.

Beginning in early September crews will begin paving wedge and binder courses of pavement on Stages 1-4 along I-691 EB and crews will pave bridge decks on I-691 EB.

Throughout September and October, crews will be applying cold elastomeric membrane to the I-691 EB bridge decks, applying a sealer compound to exposed bridge concrete.

In early October through December, crews will be mobilizing to begin guardrail installation throughout the project limits.

A team will be onsite installing overhead sign foundations in October and November.



Work will be completed primarily at night, between 7 PM and 6 AM. Any daytime work will be outside of the roadway. One or two lanes will be closed to traffic while nighttime work is underway. All lanes will be reopened and operational during peak traffic hours (6 AM – 10 AM and 3 PM - 7 PM).