

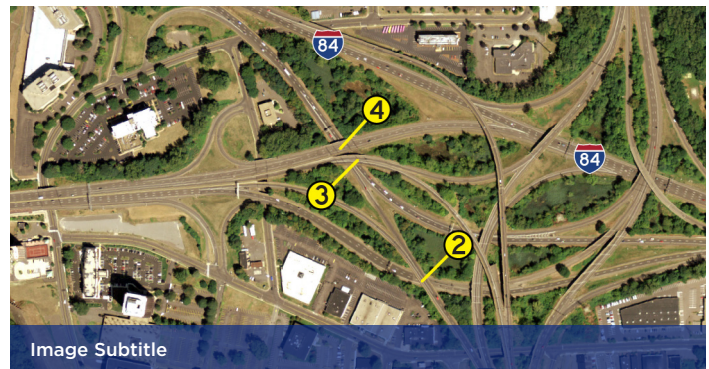


Winter 2018 Newsletter

ABOUT THE PROJECT

The Design-Build Bridge Bundle Rehabilitation Project (project number 0171-0431) is an initiative by the Connecticut Department of Transportation (CTDOT) to repair and replace three bridges in East Hartford and one bridge in Willington. The project was awarded to The Middlesex Corp. of Littleton Massachusetts on August 24, 2017 at a cost of \$22,067,950.00 and is scheduled to be completed in January 2020. The bridges being repaired and replaced as part of the project include:

1. Potter School Road over I-84 Eastbound and Westbound in Willington (Bridge 00847)
2. Route 2 Eastbound (towards Norwich and New London) over I-84 in East Hartford (Bridge 02369)
3. Route 2 Westbound (to Downtown Hartford) over I-84 Eastbound in East Hartford (Bridge 02366)
4. I-84 Westbound and HOV lane (Exit 54 to Downtown Hartford) over I-84 Eastbound in East Hartford (Bridge 02367)



All four bridges were constructed in the 1960s and consist of cast in place concrete decks on simple span steel beams on concrete abutments and piers. The repair and replacement of these bridges will keep them in service for the next 75 years.

Work on the Route 2 EB (02369) bridge began in February 2018. The bridge was reopened to traffic in October 2018. Work on the Potter School Road (00847) bridge began in May 2018. The bridge was reopened to traffic in August 2018.

Work will take place in the project area throughout the winter of 2018 and 2019 in preparation of the reconstruction of Route 2 Westbound over I-84 (Bridge 02366) and I-84 Westbound over I-84 Eastbound (Bridge 02367). Work on the Route 2 Westbound and I-84 Westbound bridges will be completed in September and November 2019, respectively.

WHAT IS DESIGN-BUILD?

Design-Build is an innovative method of project delivery in which the engineer works directly for and with the contractor to design the project. This relationship promotes collaboration and reduces project costs and timelines. CTDOT maintains oversight over the Design-Builder and defines the project requirements and specifications.

For more information, please contact.

Greg Kozma CONNECTICUT DEPARTMENT OF TRANSPORTATION
(860) 258-4615 | Gregory.Kozma@ct.gov

Connecticut Department of Transportation

BRIDGE BUNDLE REHABILITATION



BRIDGE 02369: ROUTE 2 EASTBOUND OVER I-84 IN EAST HARTFORD

Work on the western half of the bridge, which began in February 2018, was completed in July. (Figure 1)

Phase 2 of the project began in August 2018 with the shifting of traffic onto the western side of the bridge to allow for replacement of the eastern side of the bridge. The eastern side of the bridge was then demolished and substructure repairs were performed in preparation for the installation of a new bridge deck. This operation was followed by the installation of steel girders, and rebar, and the forming and pouring of the concrete deck and approaches (Figures 2 and 3). The deck was then paved and the bridge was reopened to traffic in October 2018.

Work on Bridge 02369 was completed in November 2018. (Figure 4)



Figure 1



Figure 2



Figure 3



Figure 4

For more information, please contact.

Greg Kozma CONNECTICUT DEPARTMENT OF TRANSPORTATION
(860) 258-4615 | Gregory.Kozma@ct.gov

Connecticut Department of Transportation

BRIDGE BUNDLE REHABILITATION



BRIDGE 00847: POTTER SCHOOL ROAD OVER I-84 IN WILLINGTON

The demolition of the Potter School Road Bridge took place in June 2018. (Figure 1) Following the demolition of the bridge superstructure, substructure repairs, including the forming and pouring of pier caps, bearing pads and abutment backwalls, were performed in preparation for the installation of a new superstructure.

The new superstructure was installed using Prefabricated Bridge Units (PBUs), which were constructed off-site and then transported to the project site. All six PBUs were installed over two nights in July (Figure 2). Once the PBUs were installed, concrete closures were formed and poured, and work continued on the abutment backwalls. The transverse deck section, parapet walls, wingwalls and approach slabs were then formed and poured, and deck fence was installed. (Figure 3) Beginning in August, the bridge deck and approaches were paved, bridge joints were installed and lane markings were painted.

The Potter School Road Bridge opened to traffic on Friday, August 24 (Figure 4). Following the opening of the bridge, work continued in the project area through the fall and winter. In January 2019, the center barrier on I-84 was installed and the project was completed.



Figure 1

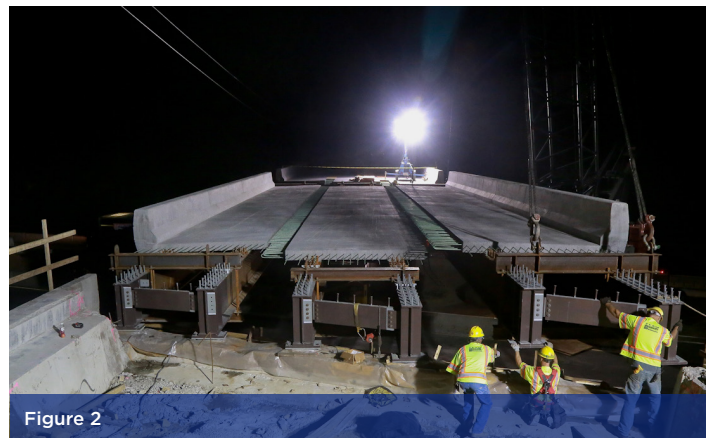


Figure 2



Figure 3



Figure 4

For more information, please contact.

Greg Kozma CONNECTICUT DEPARTMENT OF TRANSPORTATION
(860) 258-4615 | Gregory.Kozma@ct.gov

Connecticut Department of Transportation

BRIDGE BUNDLE REHABILITATION



STAY INFORMED

To date, three public meetings have been held for the Design-Build Bridge Bundle Rehabilitation Project, two in East Hartford and one in Willington. Additional community briefings may be held for interested community groups.

Additionally, a project website containing meeting presentations and minutes, detour information and contact information for the project team is being maintained for the duration of the project.

Construction look-aheads, which provide a snapshot of construction activities, are posted on the project website. These look-aheads will help members of the public plan for changes in construction activities and any detours that may be necessary as a result of these changes.



A Bird's Eye View of the Completed Bridge 02369 in East Hartford.

For more information, please contact.

Greg Kozma CONNECTICUT DEPARTMENT OF TRANSPORTATION
(860) 258-4615 | Gregory.Kozma@ct.gov