



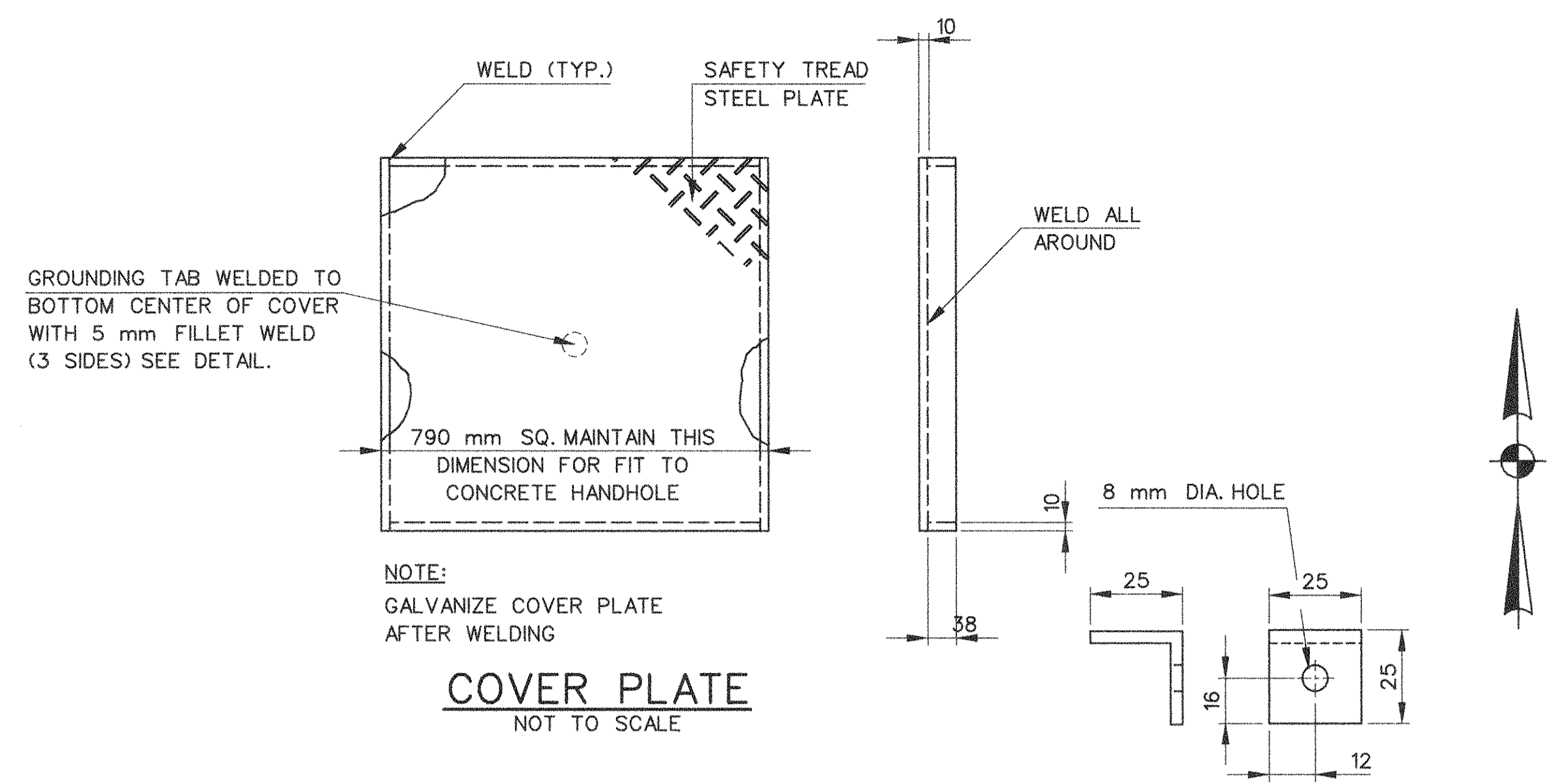


F.H.W.A. REGION NO.	STATE	TOWN	FED. AID PROJ. NO.	PROJ. NO.	YEAR	ROUTE NO.	SHEET NO.	TOTAL SHEETS
1	CONN.	EAST HARTFORD	NH-0005(703)	42-265	1998	I-84	20	252

### I-84WB HOV LANE EXTENSION

### MISCELLANEOUS DETAILS

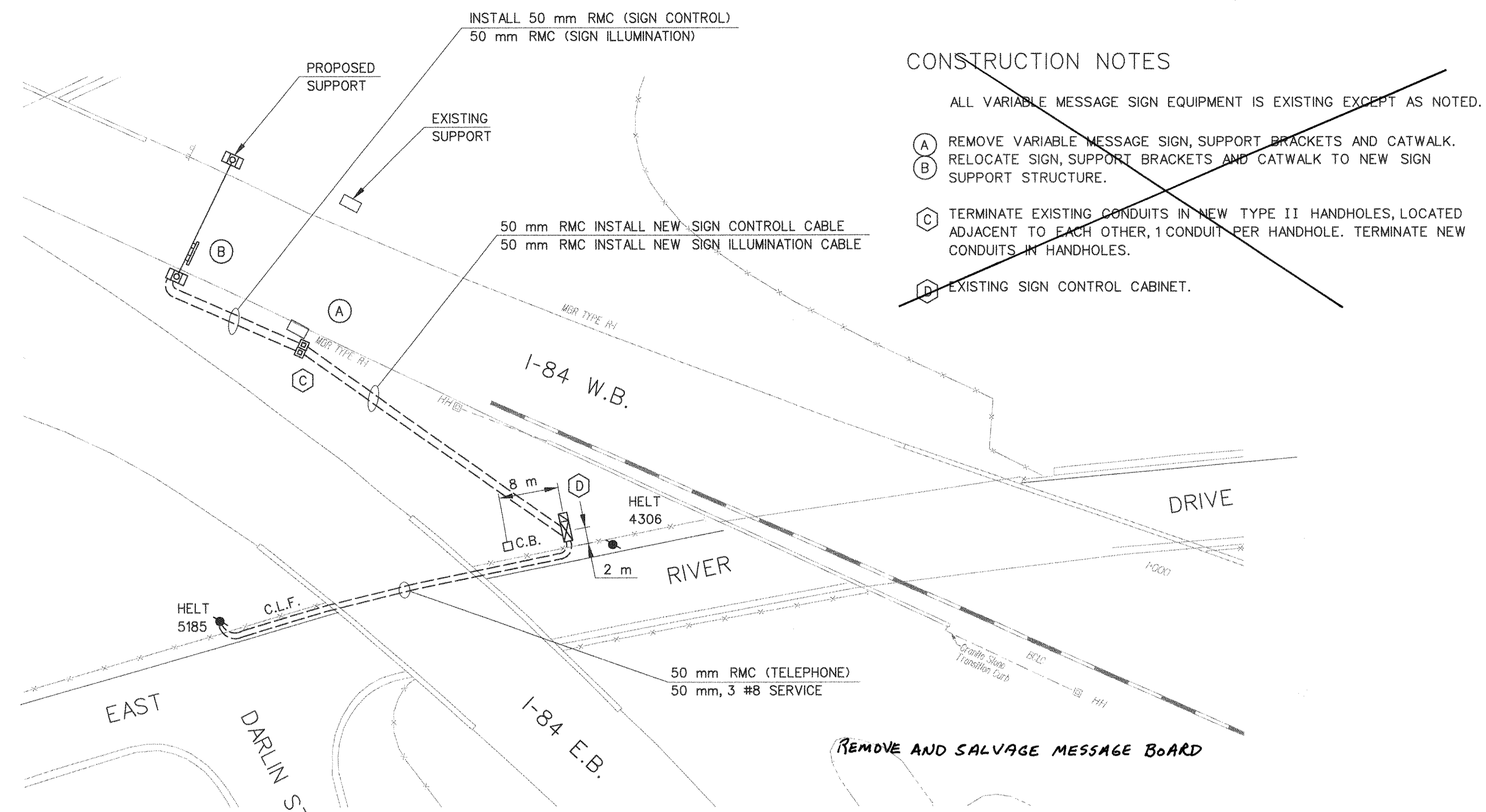
NOT TO SCALE



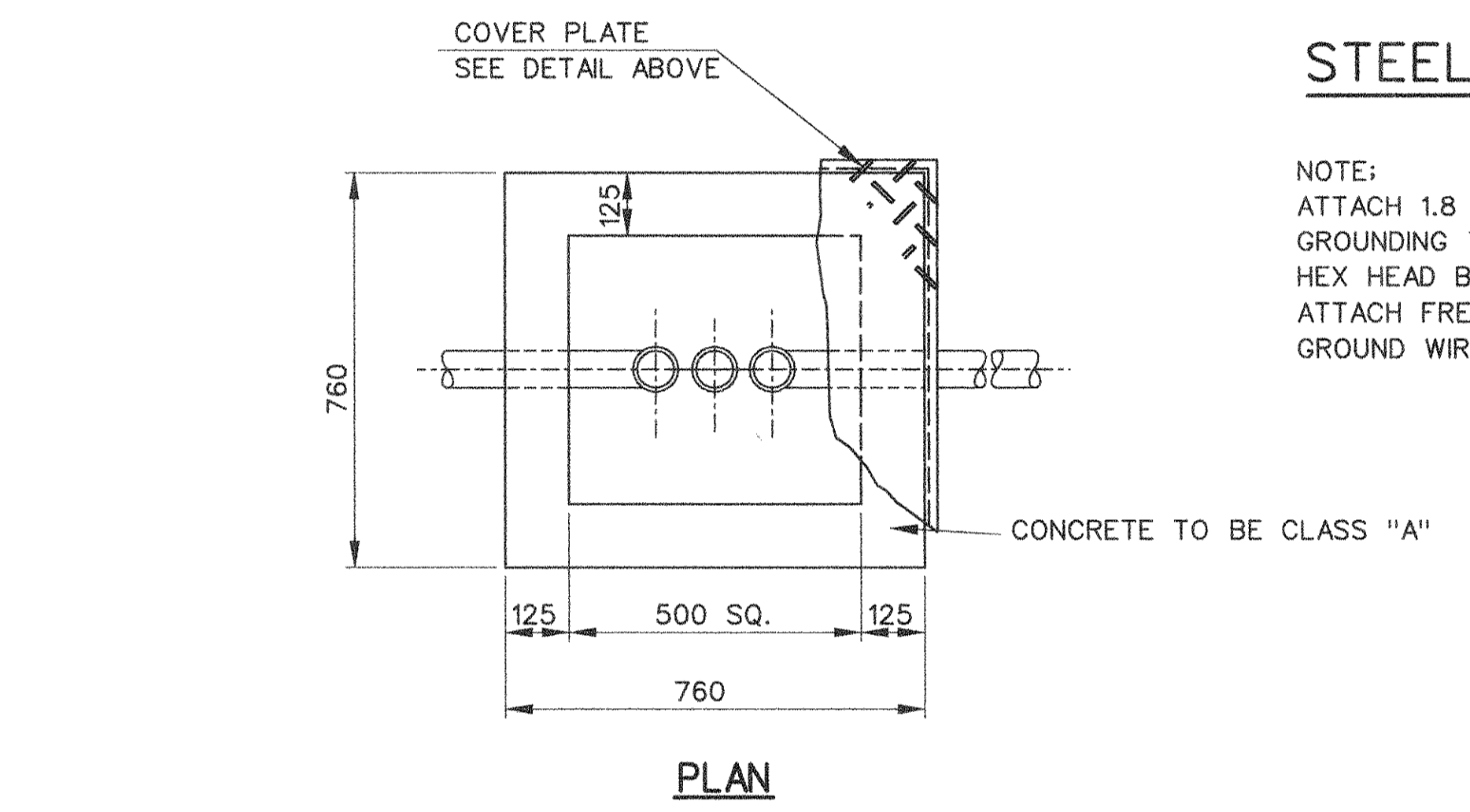
**COVER PLATE**  
NOT TO SCALE

**STEEL GROUNDING TAB**  
NOT TO SCALE

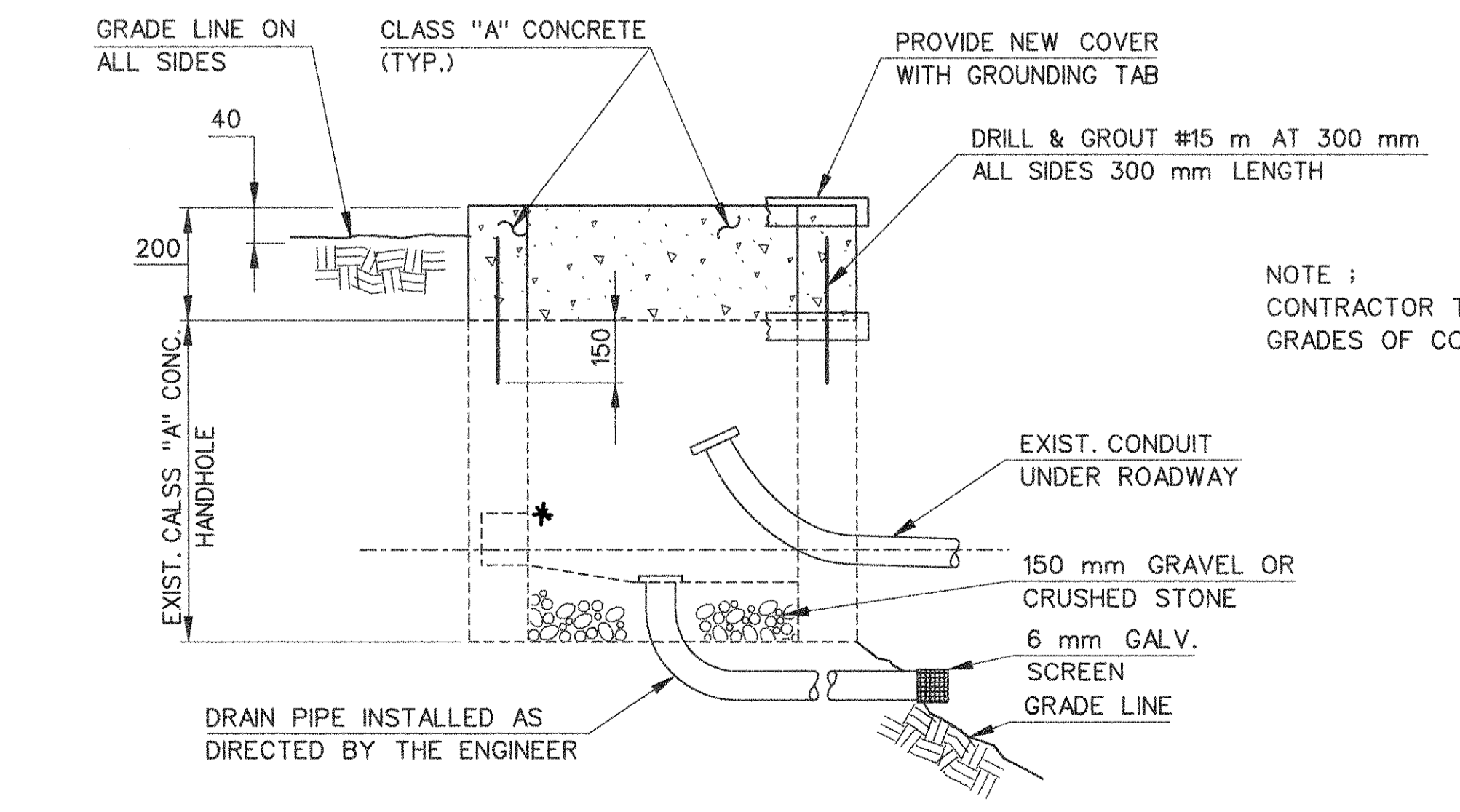
NOTE:  
ATTACH 1.8 m LENGTH OF #8 GROUND WIRE TO GROUNDING TAB WITH 6 mm 20x 20 LG. SST HEX HEAD BOLT, WITH SST FLAT WASHER. ATTACH FREE END OF GROUND WIRE TO #8 GROUND WIRE IN HANDHOLE.



~~REMOVAL AND REINSTALLATION OF SIGNING (SITE NO. 1)~~  
N.T.S.



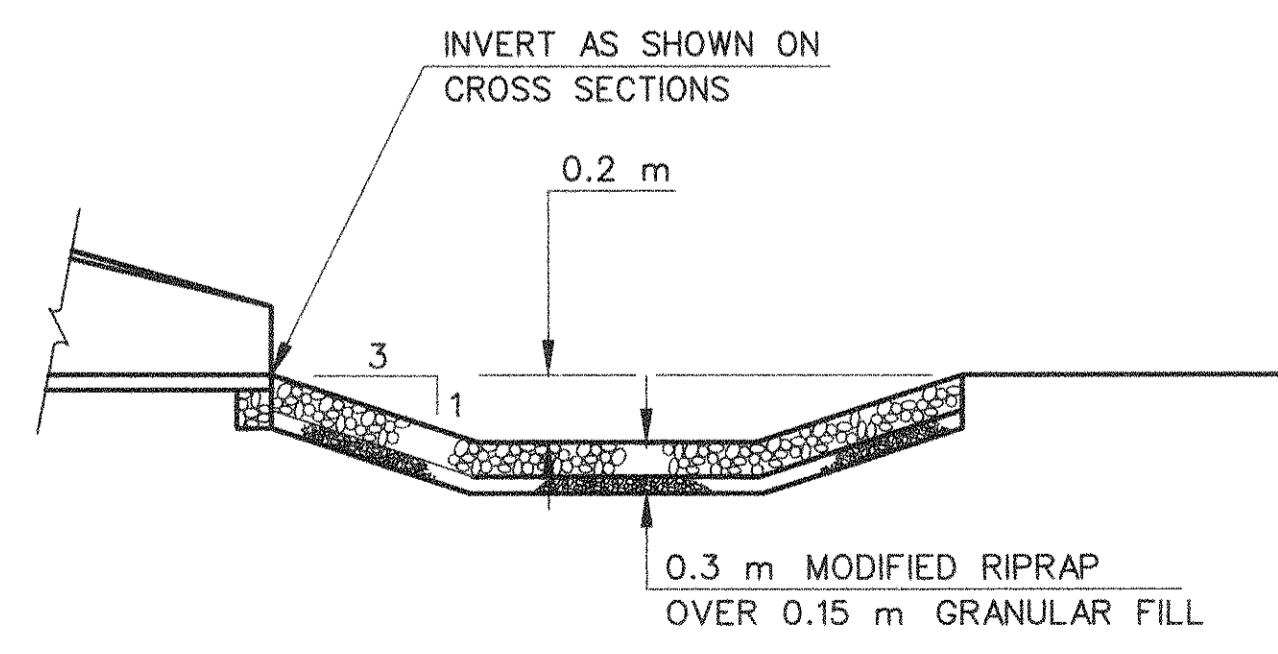
**PLAN**



**ELEVATION**

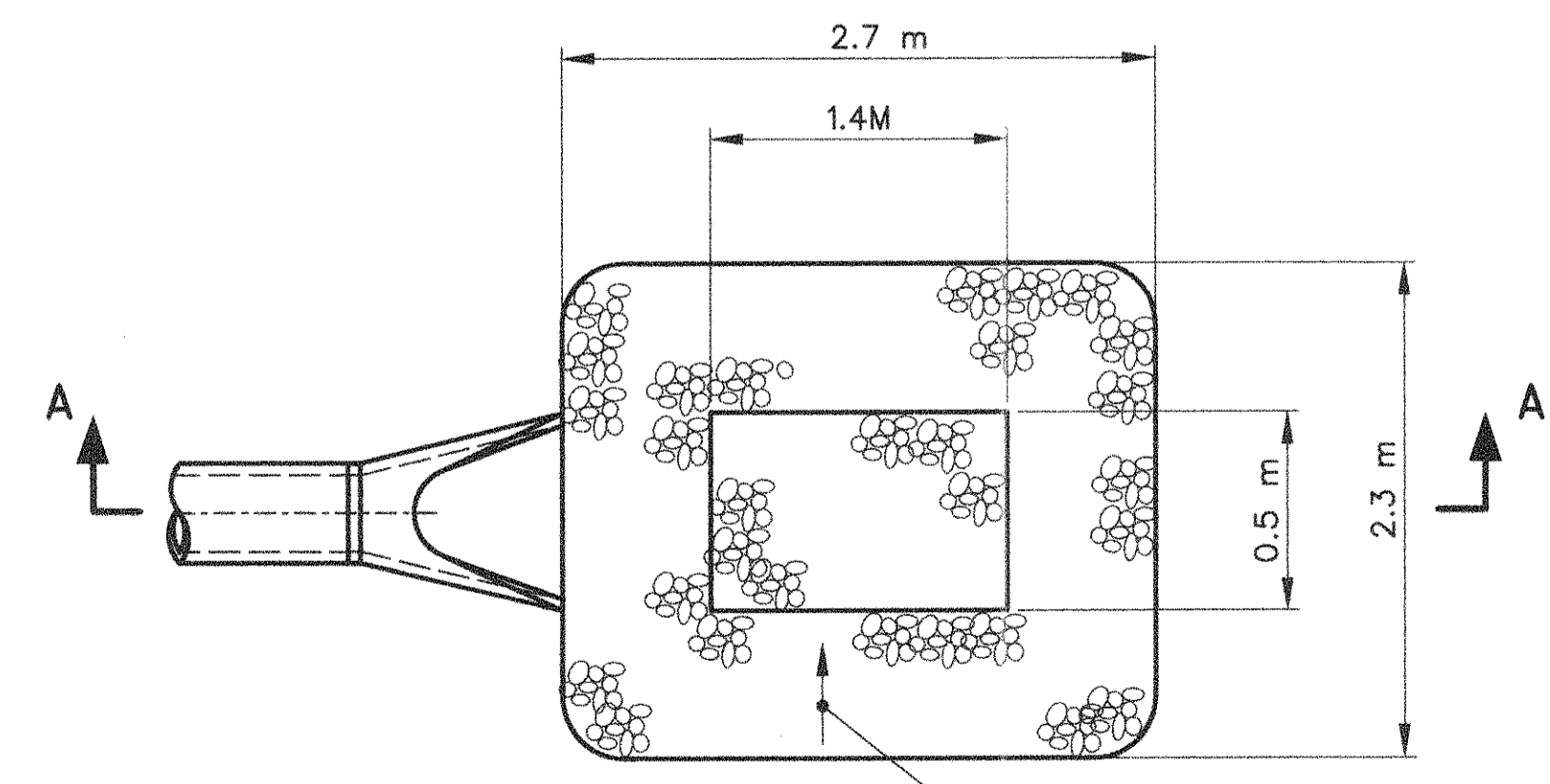
\* NOTE: CONTRACTOR INSTALLED RISERS INSTEAD OF CLASS "A" CONCRETE.  
NO PAYMENT FOR THIS WORK

**MODIFICATION OF EXISTING CONCRETE HANDHOLE**  
STA. 2+544.5 HOV L 10.5 m RT  
NOT TO SCALE



**SECTION A-A**

**PREFORMED SCOUR HOLE DETAIL**  
N.T.S.



**PLAN**

DIMENSIONS ARE IN MILLIMETERS UNLESS OTHERWISE NOTED

### CONSTRUCTION NOTES

ALL VARIABLE MESSAGE SIGN EQUIPMENT IS EXISTING EXCEPT AS NOTED.

- (A) REMOVE VARIABLE MESSAGE SIGN, SUPPORT BRACKETS AND CATWALK. RELOCATE SIGN, SUPPORT BRACKETS AND CATWALK TO NEW SIGN SUPPORT STRUCTURE.
- (B) TERMINATE EXISTING CONDUITS IN NEW TYPE II HANDHOLES, LOCATED ADJACENT TO EACH OTHER, 1 CONDUIT PER HANDHOLE. TERMINATE NEW CONDUITS IN HANDHOLES.
- (C) EXISTING SIGN CONTROL CABINET.

DATE	BY	DATE	BY
4/26/96	J.D.P.	10/16/95	H.G.W.
4/26/96	J.D.P.	10/16/95	H.G.W.
4/26/96	J.D.P.	10/16/95	A.L.M.

File-h:\adgn\4779\hwy\4779d009.dgn  
Time-08:16:46  
Date-Nov. 1, 1996

REVISIONS			
NO.	DATE	DESCRIPTION	REV. SHEET NO.

F.H.W.A. REGION NO.	STATE	TOWN	FED. AID PROJ. NO.	PROJ. NO.	YEAR	ROUTE NO.	SHEET NO.	TOTAL SHEETS
1	CONN.	EAST HARTFORD	NH-000S(703)	42-265	1998	I-84	21	252

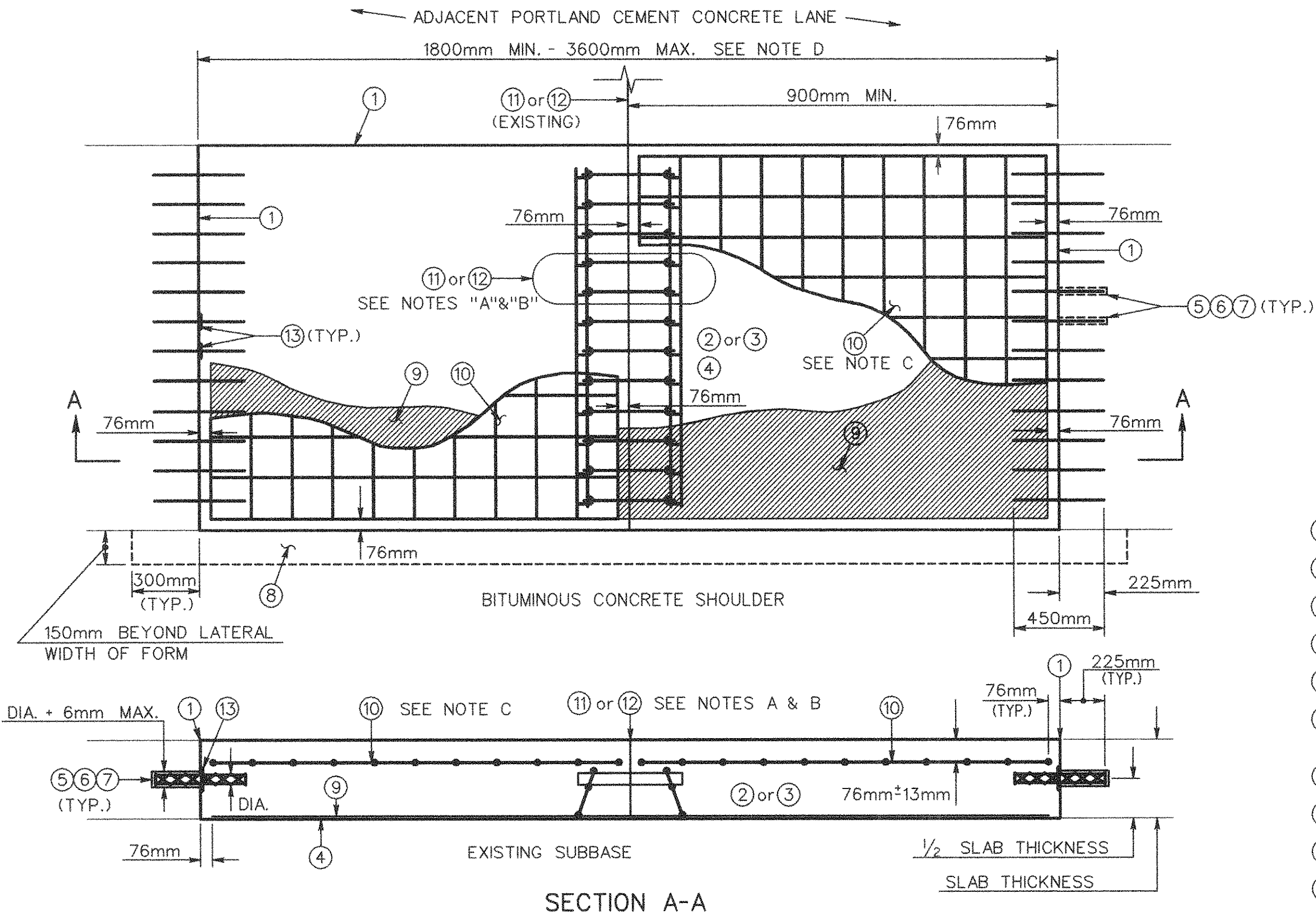
# MISCELLANEOUS DETAILS

NOT TO SCALE

## CONCRETE/COMPOSITE PAVEMENT REHABILITATION CONCRETE PAVEMENT REPLACEMENT FOR ROADWAY (FULL DEPTH)

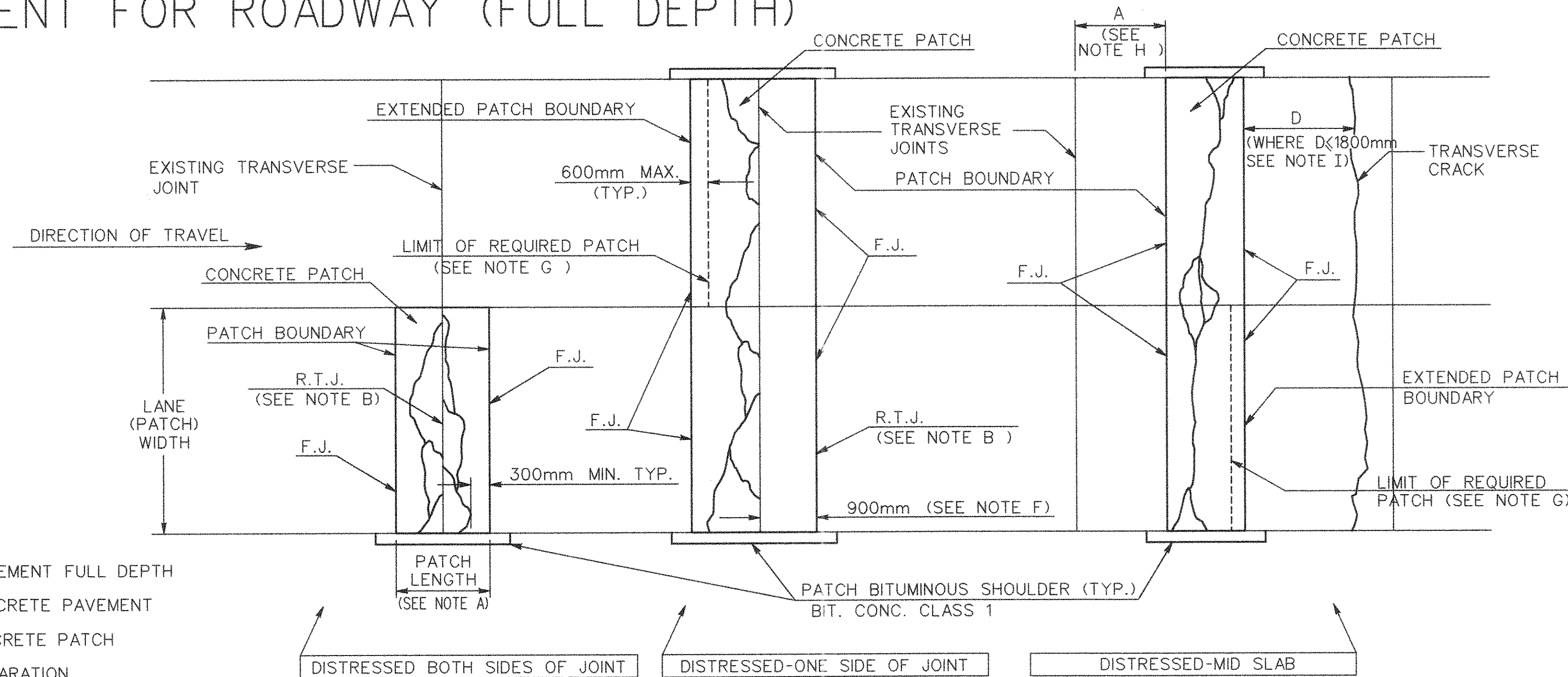
I-84WB HOV LANE EXTENSION

### REPAIR METHOD FOR JOINT DISTRESS (ONE LANE TYPICAL)



### LEGEND

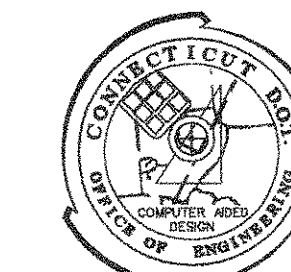
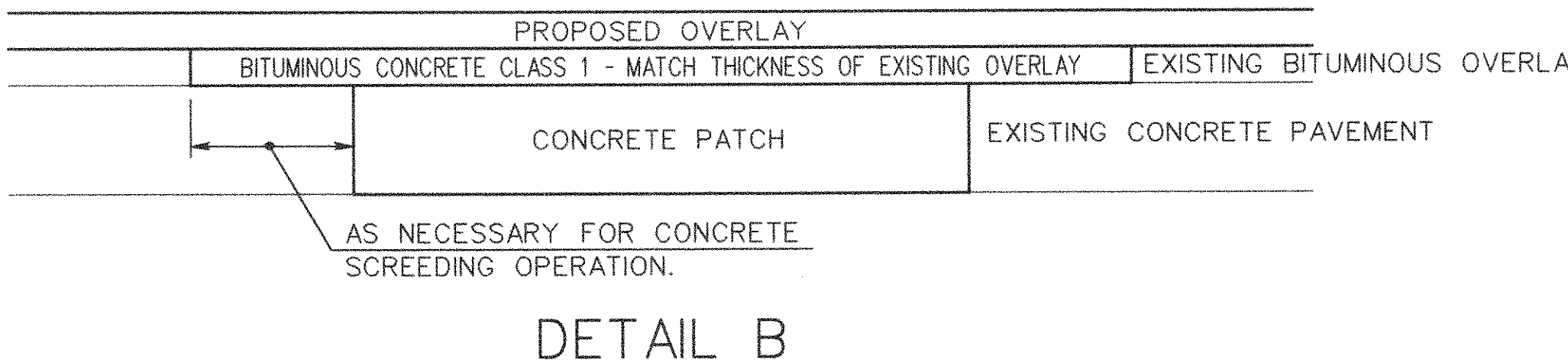
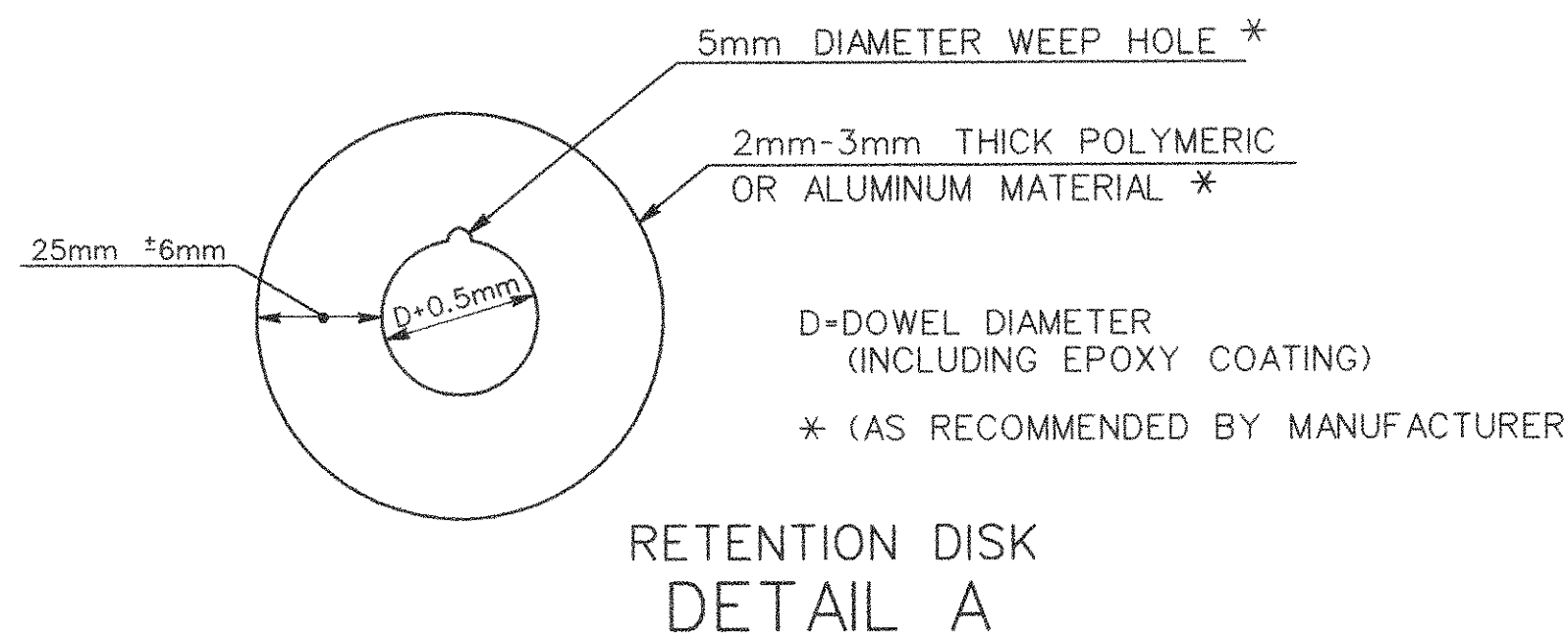
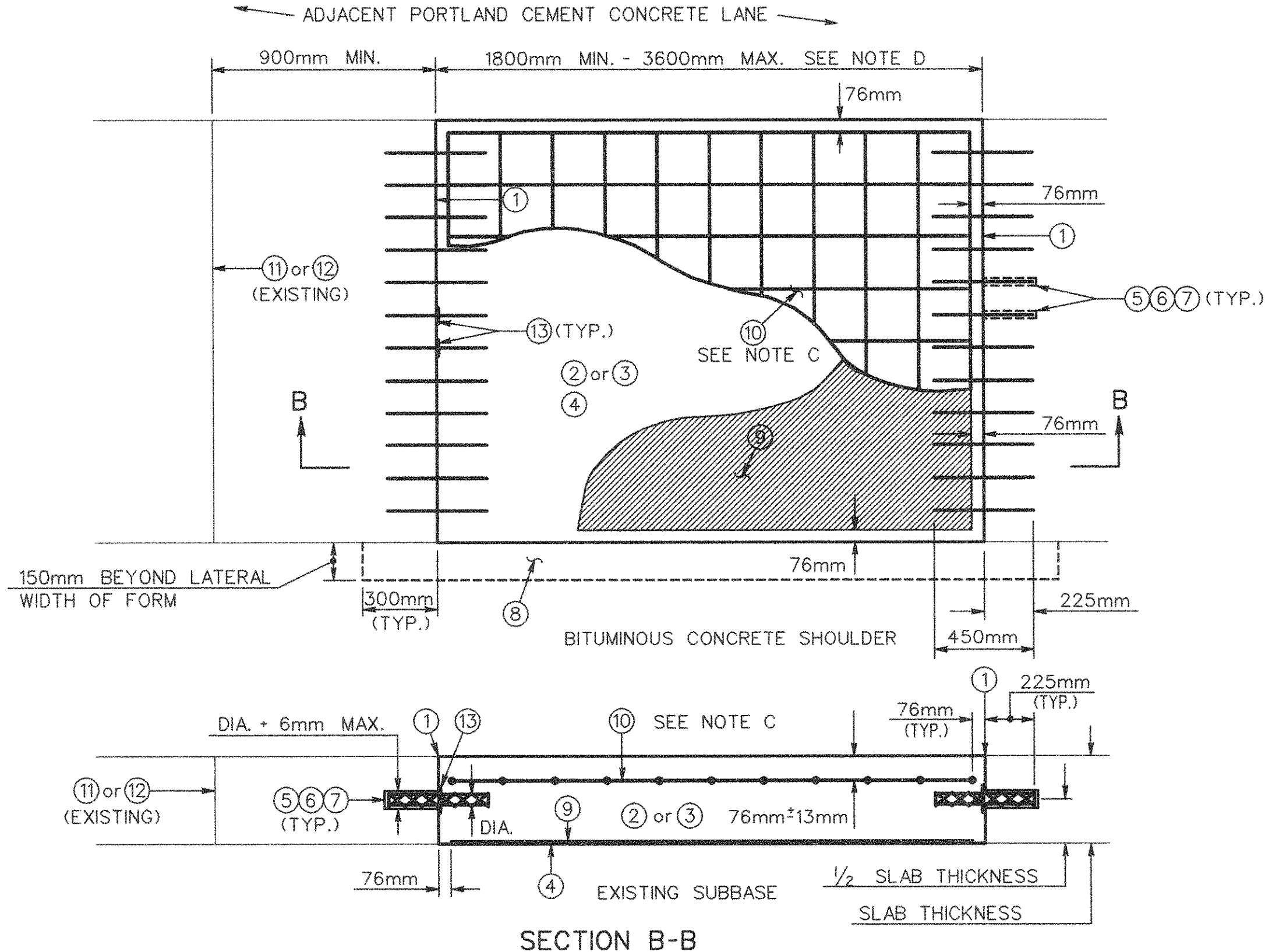
- ① SAW CUT CONCRETE PAVEMENT FULL DEPTH
- ② REMOVE DISTRESSED CONCRETE PAVEMENT
- ③ REMOVE BITUMINOUS CONCRETE PATCH
- ④ SUBBASE/SUBGRADE PREPARATION
- ⑤ DRILL EXISTING CONCRETE PAVEMENT
- ⑥ EPOXY COATED DOWEL BARS-32M DEFORMED STEEL BARS @ 300mm SPACING C-C
- ⑦ CHEMICAL ANCHOR
- ⑧ SAW CUT AND REMOVE BITUMINOUS SHOULDER AND INSTALL FORM
- ⑨ POLYETHYLENE SHEET
- ⑩ SMOOTH WELDED STEEL WIRE FABRIC REINFORCEMENT IN ACCORDANCE WITH M.06.03
- ⑪ TRANSVERSE CONTRACTION JOINT
- ⑫ TRANSVERSE EXPANSION JOINT
- ⑬ RETENTION DISK, (AS RECOMMENDED BY MANUFACTURER); SEE DETAIL A



### CONCRETE PAVEMENT REPLACEMENT NOTES:

- R.T.J. = REESTABLISH TRANSVERSE JOINT  
F.J. = FIXED JOINT
- A: WHEN AN EXISTING TRANSVERSE CONTRACTION OR EXPANSION JOINT FALLS WITHIN THE LIMITS OF THE PATCH, THE CONTRACTION OR EXPANSION JOINT SHALL BE REPLACED WITH A JOINT OF THE SAME TYPE, ALONG THE SAME PLANE AS THE ADJACENT TRANSVERSE JOINTS. FOR DETAILS OF THE EXPANSION AND CONTRACTION JOINT CONSTRUCTION SEE STANDARD SHEET 401-D & 401-E.
- B: FOR DETAILS OF LOAD TRANSFER UNITS SEE STANDARD SHEET 401-D & 401-E.
- C: FOR DETAILS OF FABRIC REINFORCEMENT SEE STANDARD SHEET 401-B.
- D: WHEN IT IS DETERMINED BY THE ENGINEER THAT A PATCH GREATER THAN 3600mm IN LENGTH IS NECESSARY, THEN THE CONTRACTOR SHALL SUBMIT A PLAN FOR THE PROPOSED METHOD OF OPERATIONS FOR APPROVAL BY THE ENGINEER.
- E: WHEN THE EXISTING ROADWAY CONSISTS OF A COMPOSITE PAVEMENT, (BITUMINOUS CONCRETE ON PORTLAND CEMENT CONCRETE), REFER TO DETAIL B.
- F: WHERE DISTRESS IS LIMITED TO ONLY ONE SIDE OF TRANSVERSE JOINT: PATCH BOUNDARY EXTENDED 900mm ON GOOD SIDE OF JOINT TO REMOVE AND REPLACE EXISTING DOWEL BAR SYSTEM.
- G: WHERE DISTRESS IN ADJACENT LANES IS SIMILAR, THE PATCH BOUNDARY SHALL BE EXTENDED TO AVOID OFFSETS <600mm BETWEEN PATCHES IN ADJACENT LANES.
- H: WHERE DIMENSION A>900mm, MID-SLAB CRACK REPAIRED AS SHOWN, WHERE A<900mm, PATCH BOUNDARY EXTENDED TO INCLUDE THE REESTABLISHMENT OF THE ADJACENT TRANSVERSE JOINT.
- I: WHERE OTHER SEVERELY DEGRADED OR FAULTED TRANSVERSE CRACKS EXIST WITHIN 1800mm OF EITHER PATCH BOUNDARY, EXTEND PATCH BOUNDARY TO INCLUDE THE CRACK.
- J: THE TERMS: CONCRETE PAVEMENT REPLACEMENT FOR ROADWAY (FULL DEPTH), CONCRETE PATCH, AND PATCH SHALL BE USED INTERCHANGEABLY.

### REPAIR METHOD FOR MID-SLAB DISTRESS (ONE LANE TYPICAL)

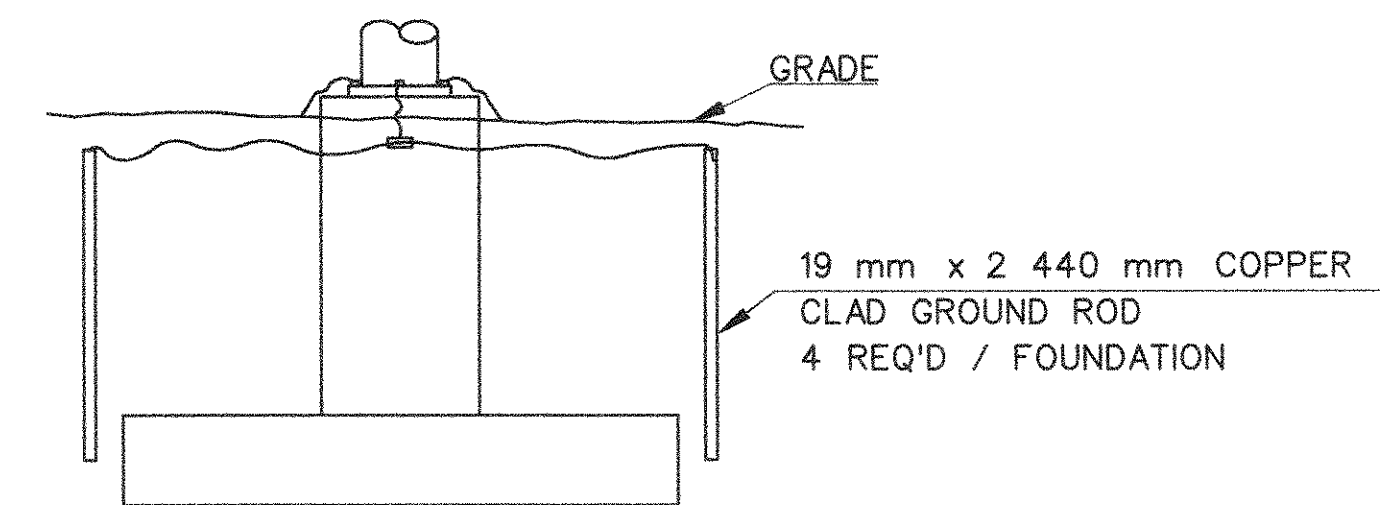


REVISED 7/11/96

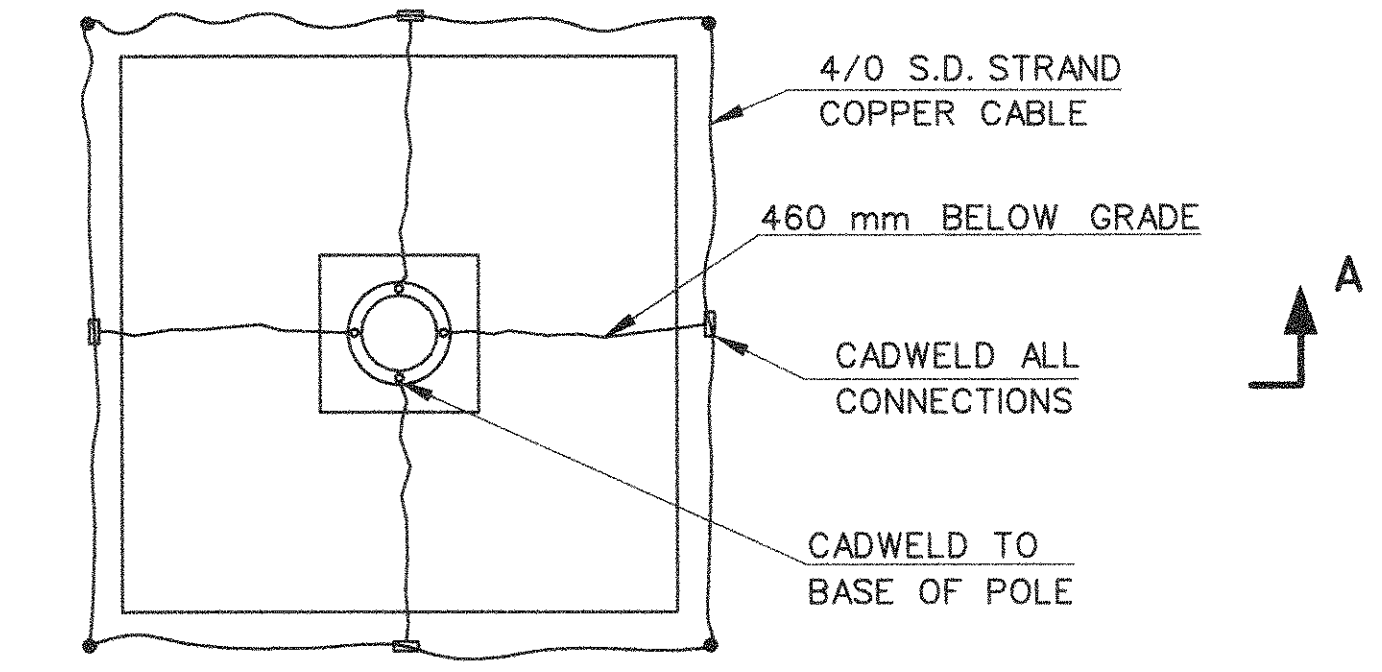
REVISIONS			
NO.	DATE	DESCRIPTION	REV. SHEET NO.

F.H.W.A. REGION NO.	STATE	TOWN	FED. AID PROJ. NO.	PROJ. NO.	YEAR	ROUTE NO.	SHEET NO.	TOTAL SHEETS
1	CONN.	EAST HARTFORD	NH-000S(703)	42-265	1998	I-84	30	252

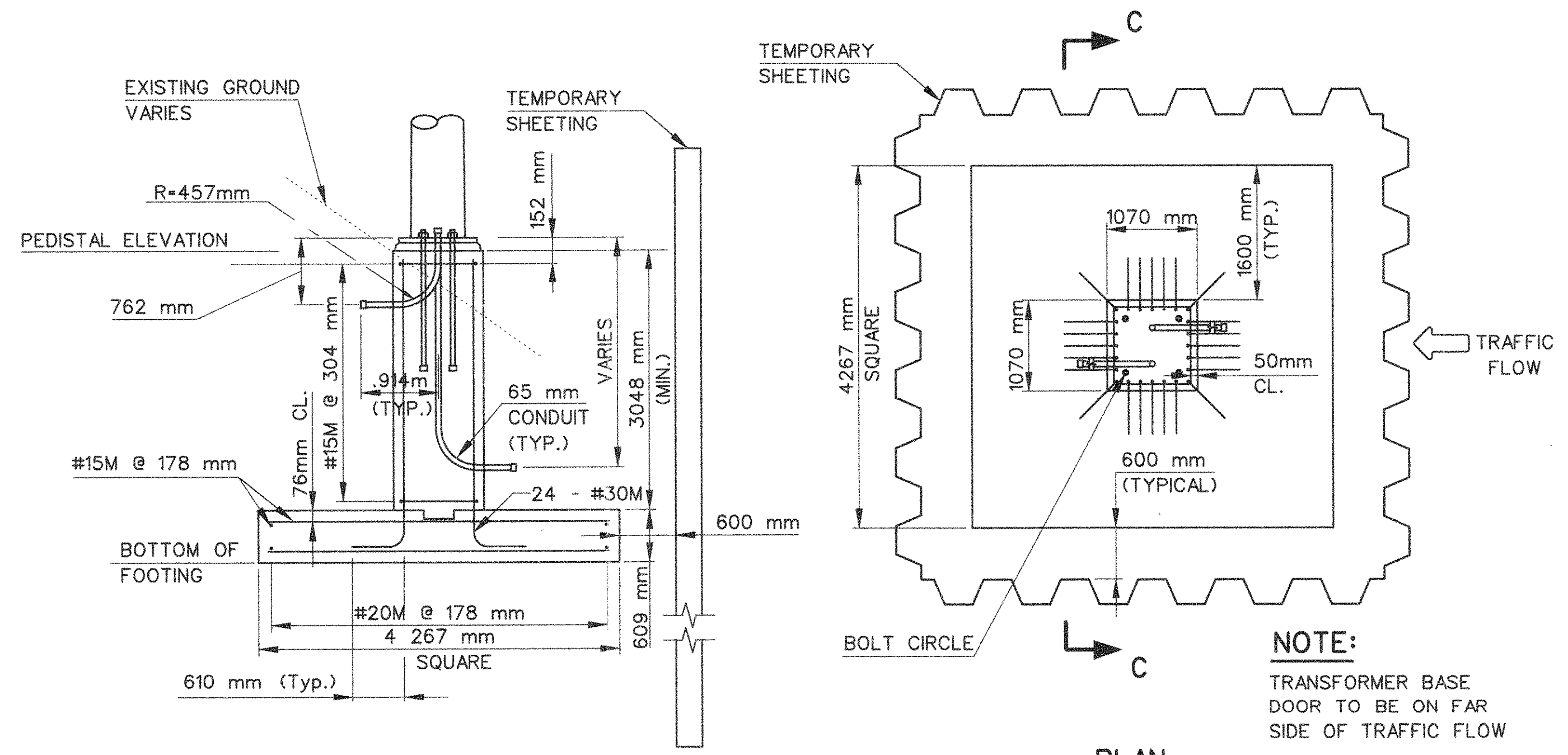
### I-84WB HOV LANE EXTENSION



SECTION A-A



HIGH MAST POLE FOUNDATION GROUNDING  
N.T.S.



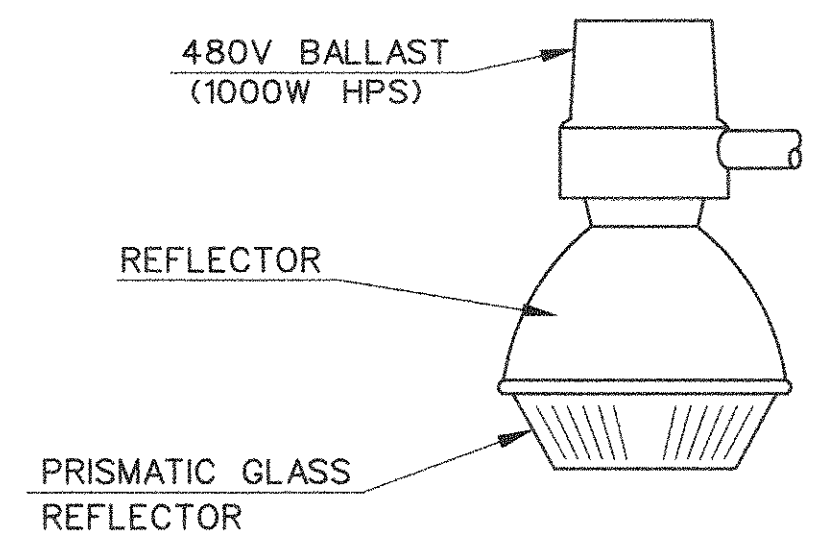
SECTION C-C

HIGH MAST POLE FOUNDATION  
N.T.S.

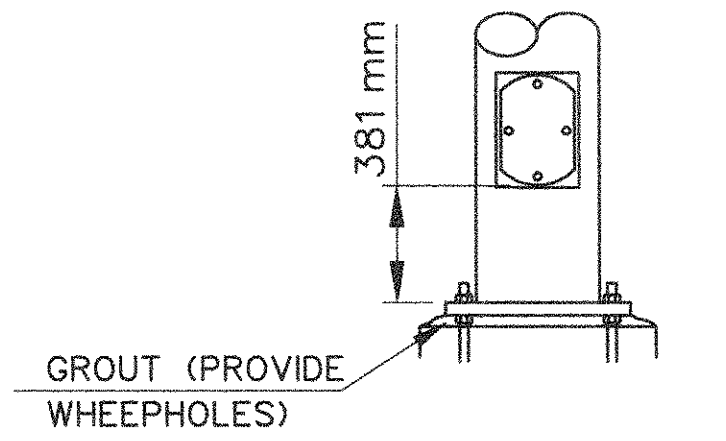
**NOTE:**  
ANCHOR BOLTS SHALL BE THE NUMBER AND SIZE AND SHALL HAVE THE BOLT CIRCLE CONFORMING TO THE REQUIREMENTS OF THE MANUFACTURER OF THE HIGH MAST POLES. NUMBER, SIZE AND ORIENTATION OF CONDUITS TO BE CAST INTO FOUNDATION SHALL BE AS REQUIRED BY THE PLAN SHEET OF EACH POLE.

REVISIONS			
NO.	DATE	DESCRIPTION	REV. SHEET NO.

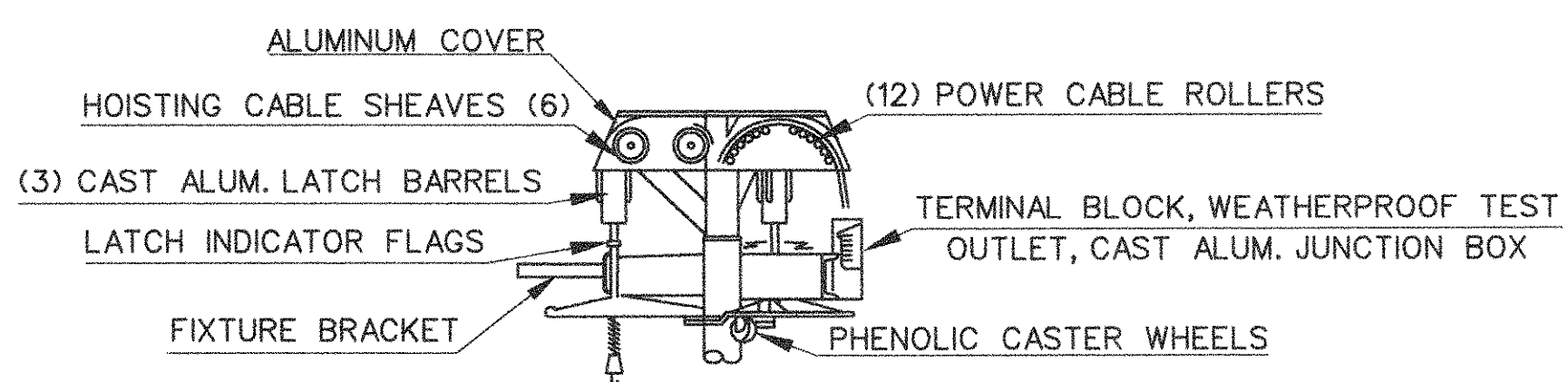
### MISCELLANEOUS DETAILS



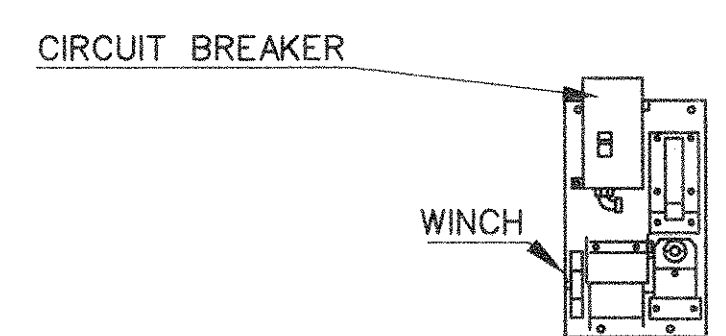
LUMINAIRE DETAIL



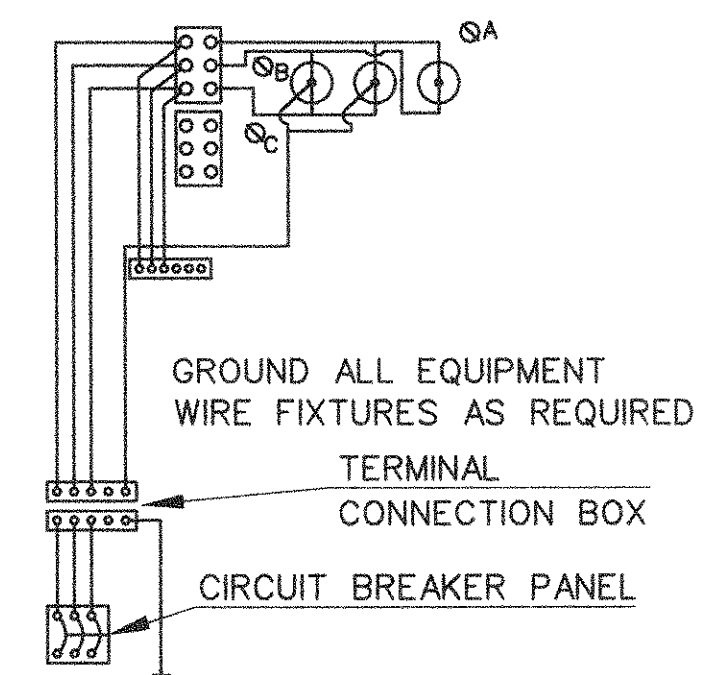
LUMINAIRE MOUNTING RING (TOP)



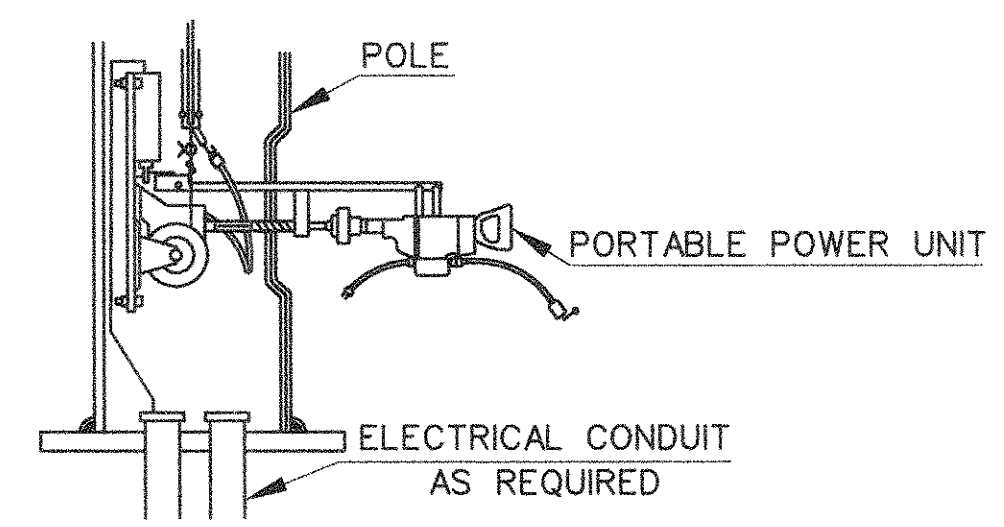
HEAD FRAME AND MOUNTING RING ASSEMBLY



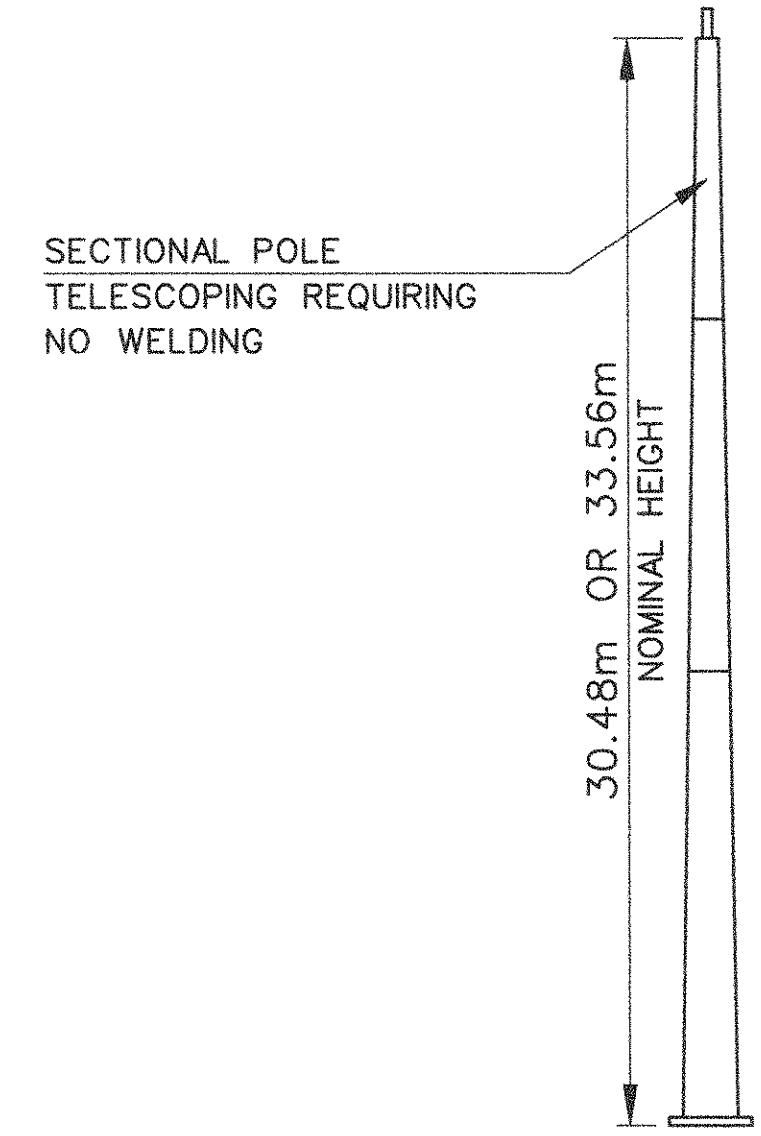
WINCH, CIRCUIT BREAKER SUPPORT



SCHEMATIC WIRING DIAGRAM



POLE BASE EQUIPMENT



SECTIONAL POLE, HIGHMAST

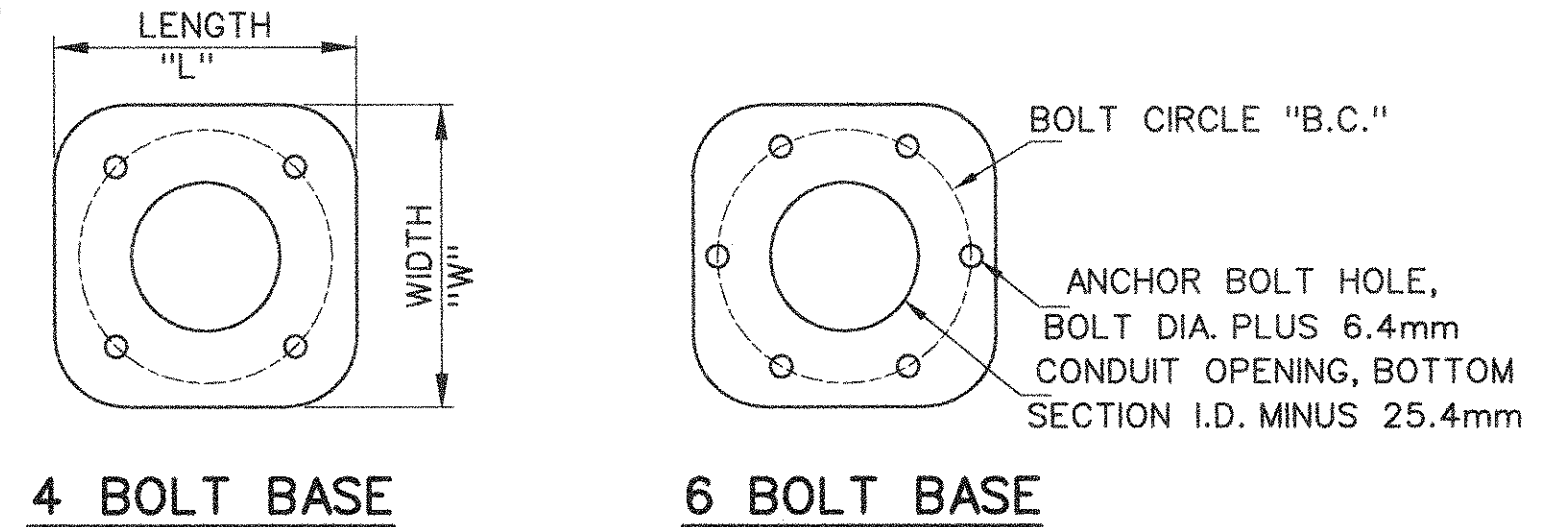
**NOTE:**  
CONSULT PLANS FOR NUMBER OF LUMINAIRES/POLES. CONSULT SPECIFICATIONS FOR TYPE AND PERFORMANCE OF POLE. SET ANCHOR BOLTS PER MANUFACTURER'S RECOMMENDATIONS. GALVANIZED STEEL POLE BOTH INSIDE AND OUTSIDE. TOP DIAMETER AND BOTTOM DIAMETER AS REQUIRED. MAXIMUM POLE DEFLECTION TO BE 10%.

### HIGH MAST POLE LIGHTING & ELECTRICAL DETAILS

N.T.S.  
(FOR INFO ONLY)

POLE NO.	POLE HT (m)	SECT.	POLE SECT. DIMENSIONS				POLE WEIGHT (kg)	ANCHOR BOLTS				MAX. MOMENT (kN.m)	BASE PLATE (mm)				
			BOT. O.D. (mm)	TOP O.D. (mm)	WALL TH. (mm)	LENGTH (m)		QTY.	DIA. (mm)	LENGTH (m)	WT. (kg)		L	W	T	BOLT CIRCLE	P
H-4532	30.48	A	477.5	406.4	4.78	6.10	1257.8	6	44.5	2.134 ± 0.152	179.2	265.2	800.1	692.2	31.8	679.5	168.4
		B	427.2	286.5	4.78	12.07											
		C	304.8	140.5	4.55	14.08											
H-4533	33.53	A	513.1	406.4	5.56	9.14	1492.3	4	57.2	1.78	159.2	370.0	596.9	596.9	57.2	666.8	222.3
		B	427.2	286.5	4.78	12.07											
		C	304.8	140.5	4.55	14.08											

EACH ANCHOR BOLT SHALL BE SUPPLIED WITH TWO HEX NUTS, TWO FLAT WASHERS



4 BOLT BASE

6 BOLT BASE

BY	DATE	CHECKED BY	DATE

PLAN	NOTEBOOK NO.

