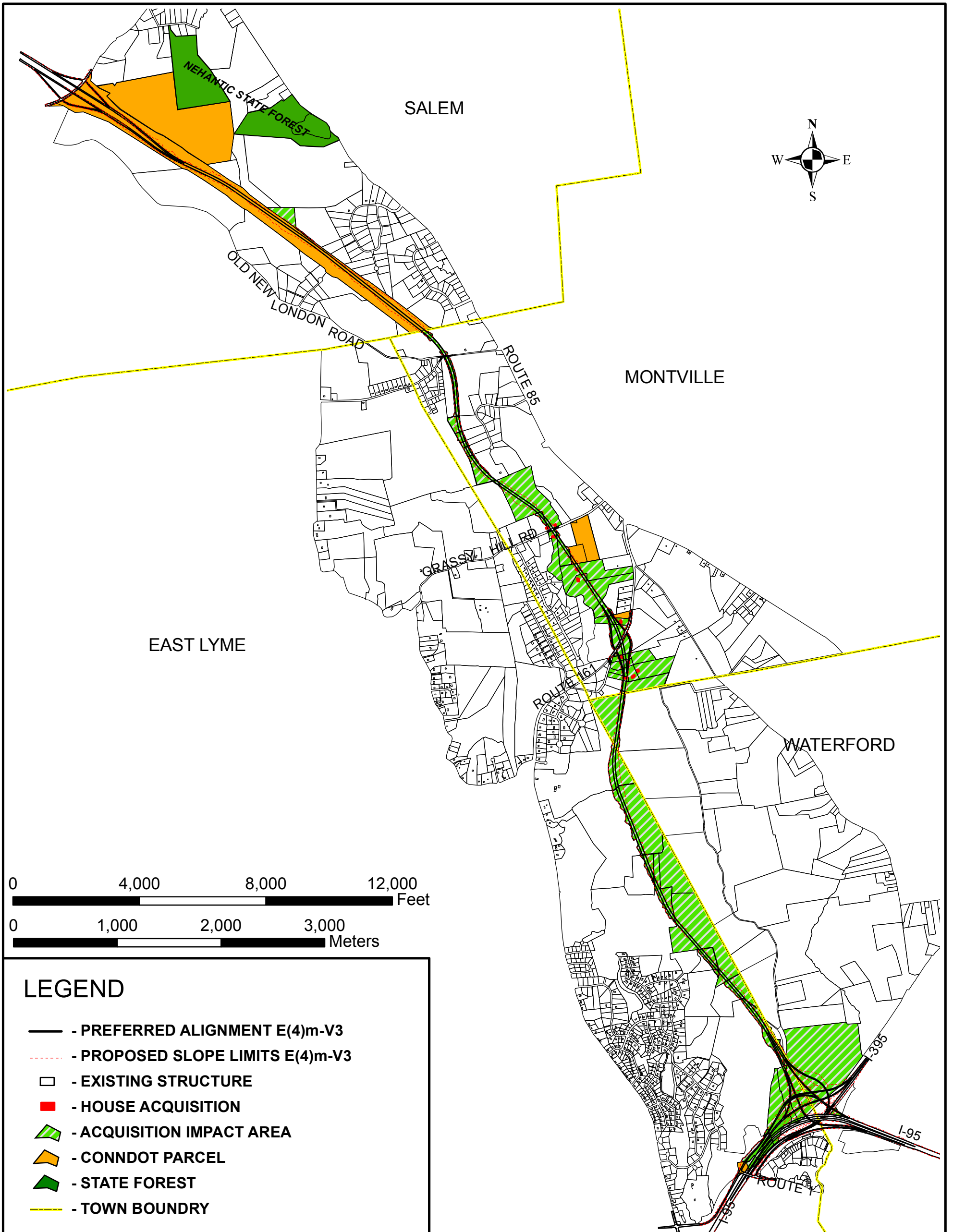


APPENDIX E
POTENTIAL PROPERTY ACQUISITION
IMPACTS – PREFERRED ALTERNATIVE



State of Connecticut Department of Transportation
 Federal Highway Administration
ROUTE 82/85/11
ENVIRONMENTAL IMPACT STATEMENT (EIS)
 IN THE TOWNS OF
 EAST LYME, MONTVILLE, SALEM AND WATERFORD

November 2006

E(4)m-V3
POTENTIAL PROPERTY ACQUISITION IMPACTS

SOURCE: BASE MAP-1999 AERIAL SURVEY; PARCELS-TAX ASSESSORS MAPS

Figure E-1