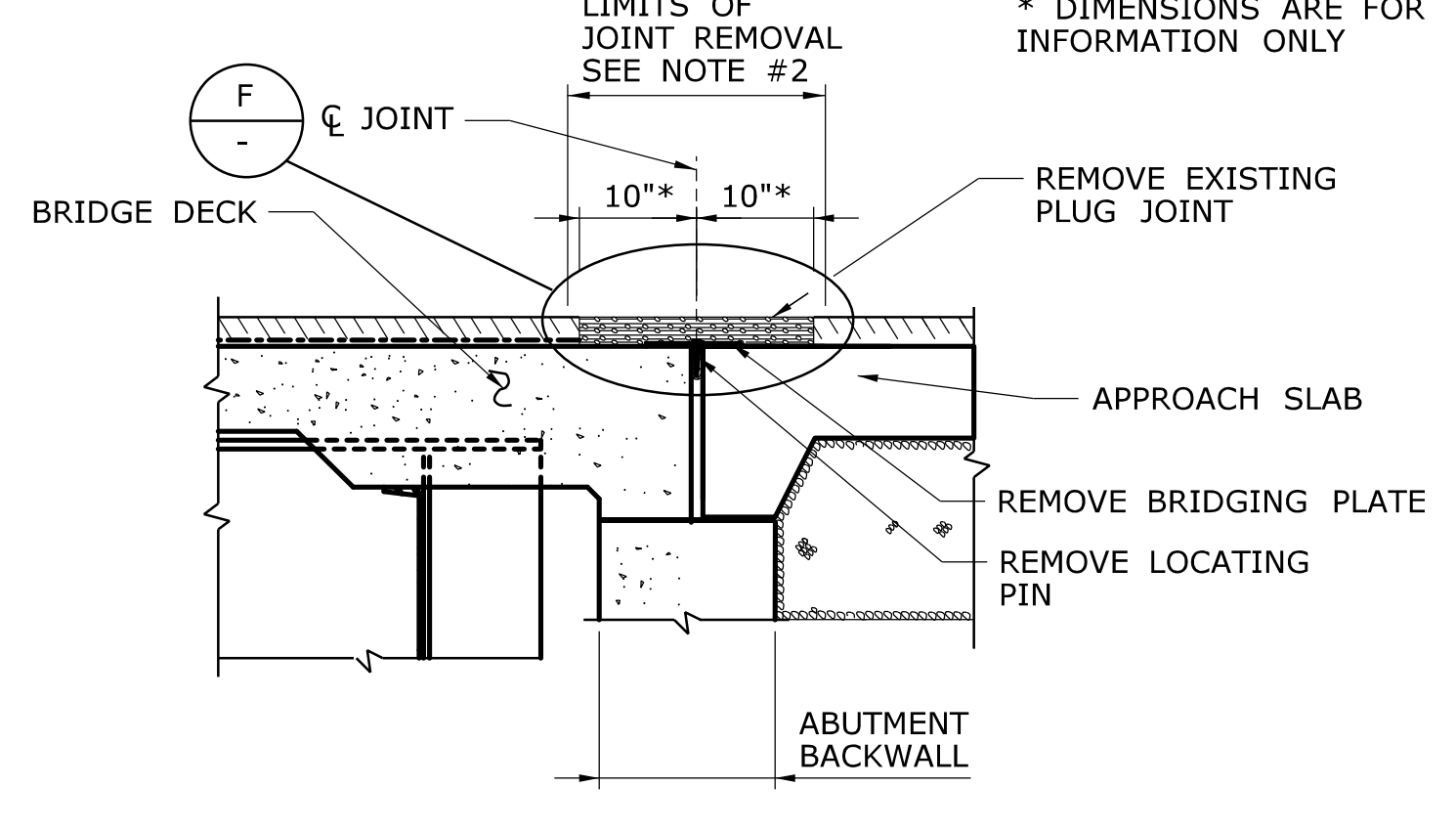


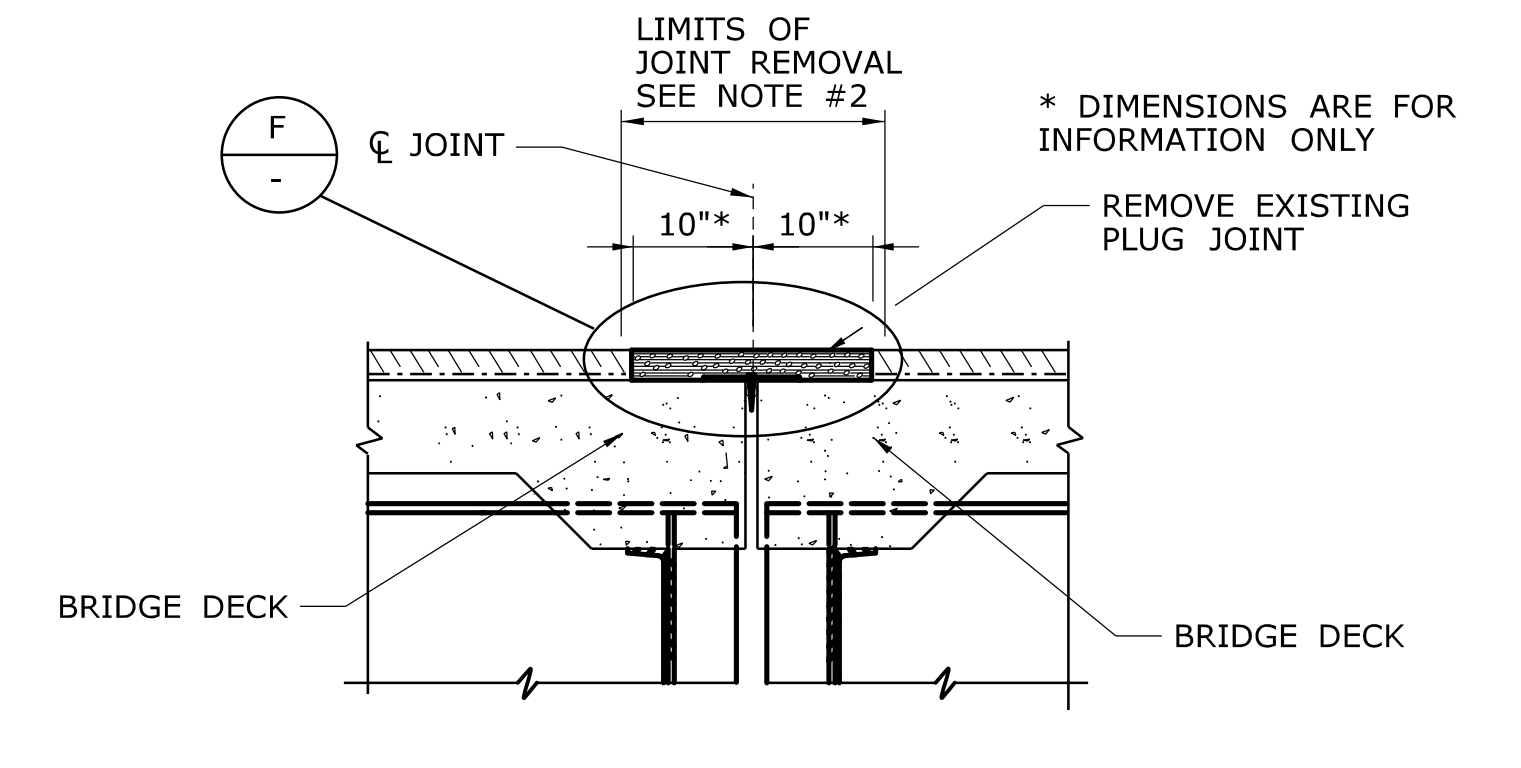
REMOVAL - EXISTING ASPHALTIC PLUG JOINT AT ROADWAY SLAB
SCALE: 3/4" = 1'-0"

SECTION A



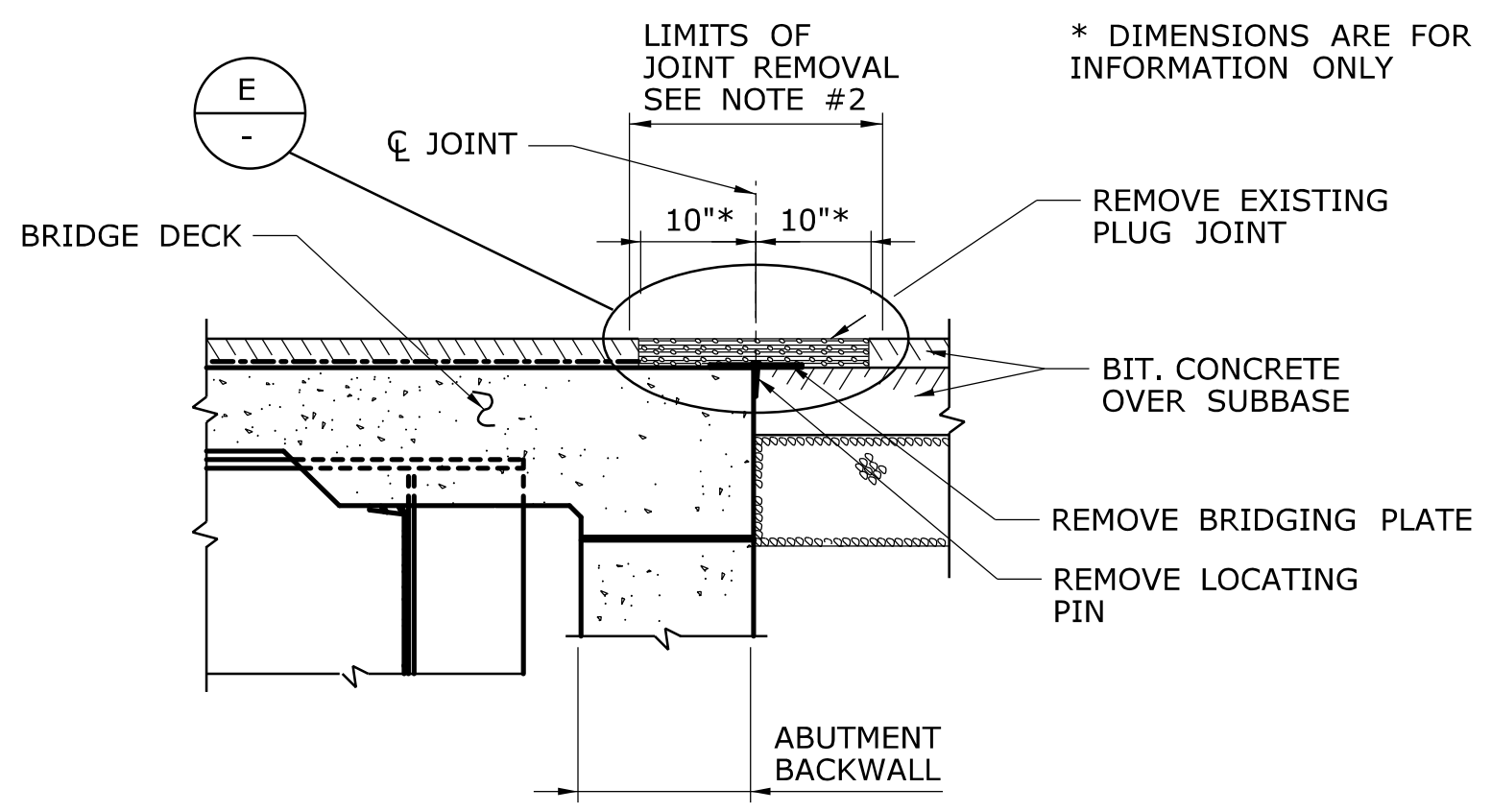
REMOVAL - EXISTING ASPHALTIC PLUG JOINT AT APPROACH SLAB
SCALE: 3/4" = 1'-0"

SECTION B



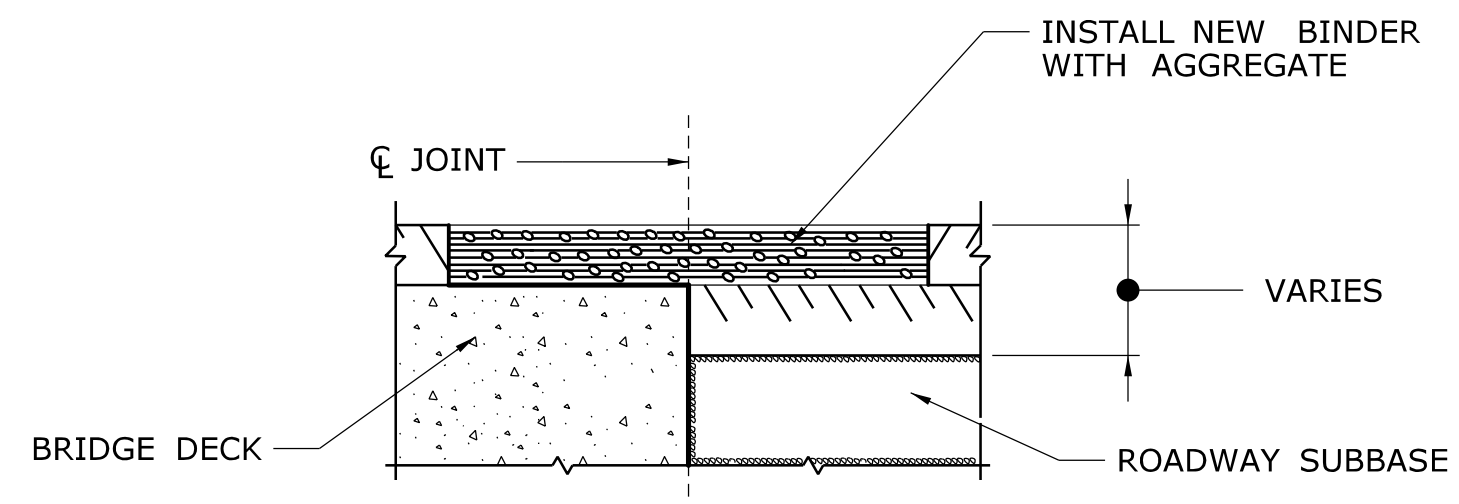
REMOVAL OF EXISTING ASPHALTIC PLUG JOINTS AT PIERS
SCALE: 3/4" = 1'-0"

SECTION C



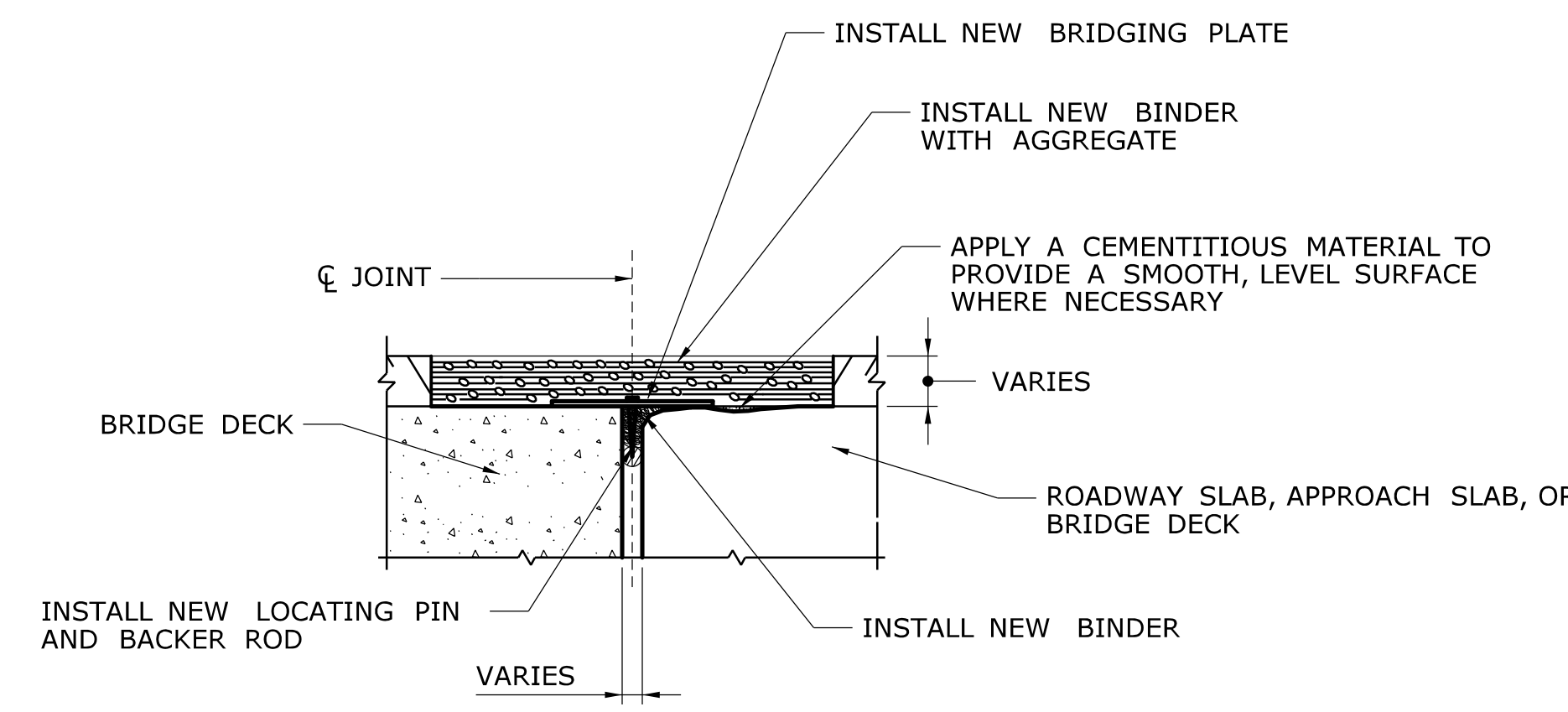
REMOVAL - EXISTING ASPHALTIC PLUG JOINT AT THE SHOULDER
SCALE: 3/4" = 1'-0"

SECTION D



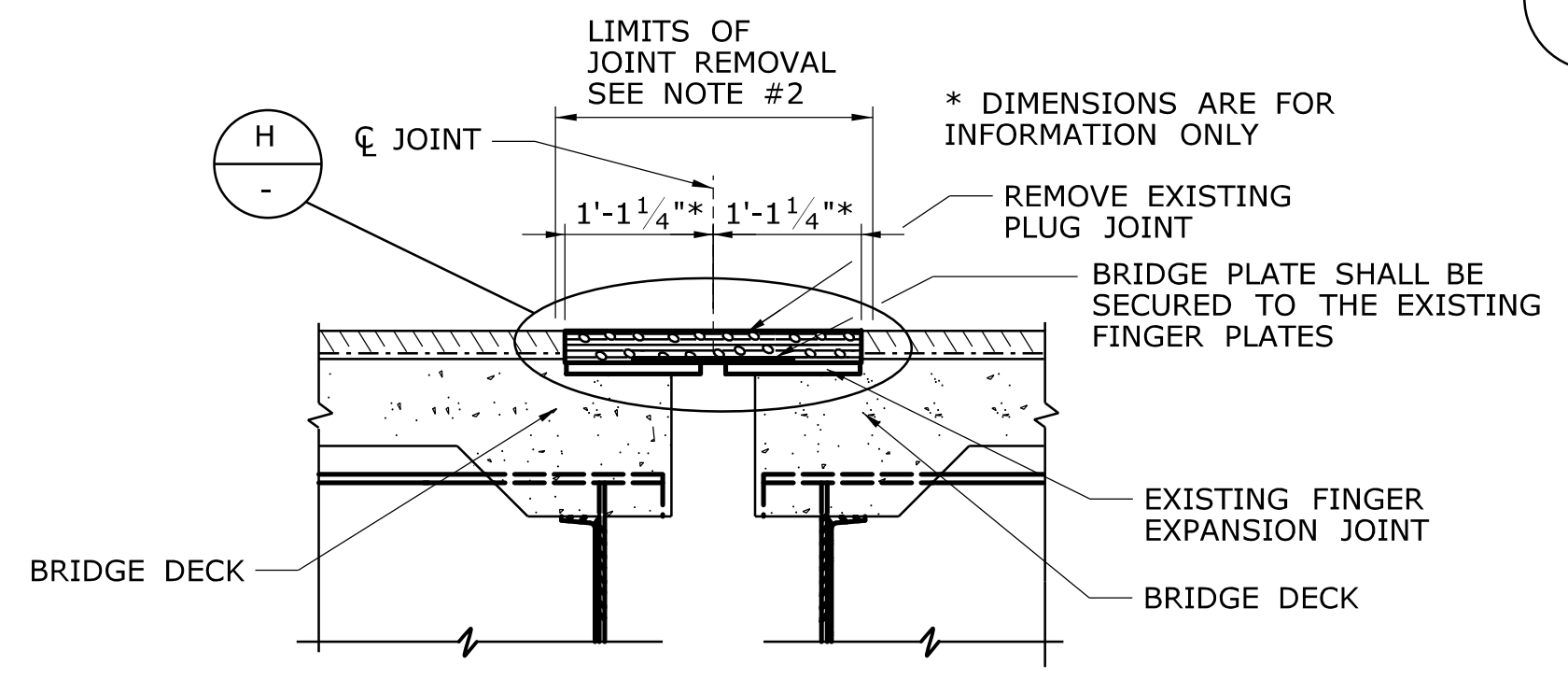
INSTALLATION OF ASPHALTIC PLUG EXPANSION JOINT SYSTEM
SCALE: 1 1/2" = 1'-0"

SECTION E



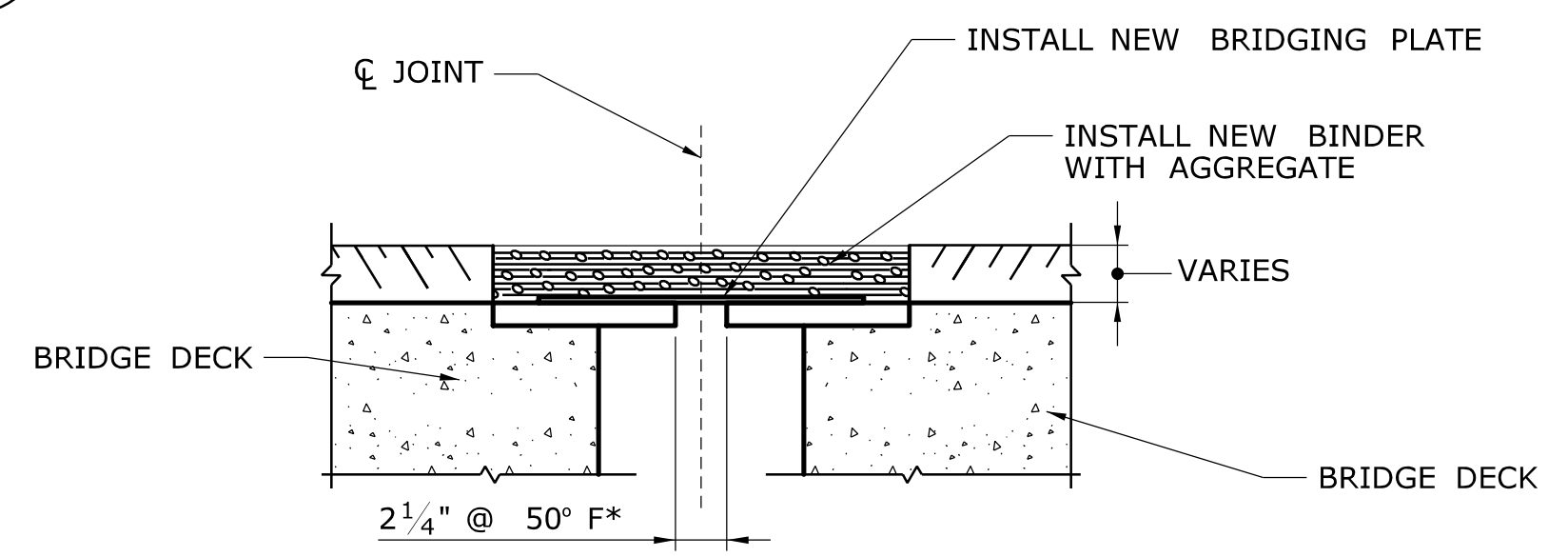
INSTALLATION OF ASPHALTIC PLUG EXPANSION JOINT SYSTEM
SCALE: 1 1/2" = 1'-0"

SECTION F



REMOVAL OF EXISTING ASPHALTIC PLUG JOINTS AT PIERS WITH FINGER JOINT PLATES
SCALE: 1 1/2" = 1'-0"

SECTION G

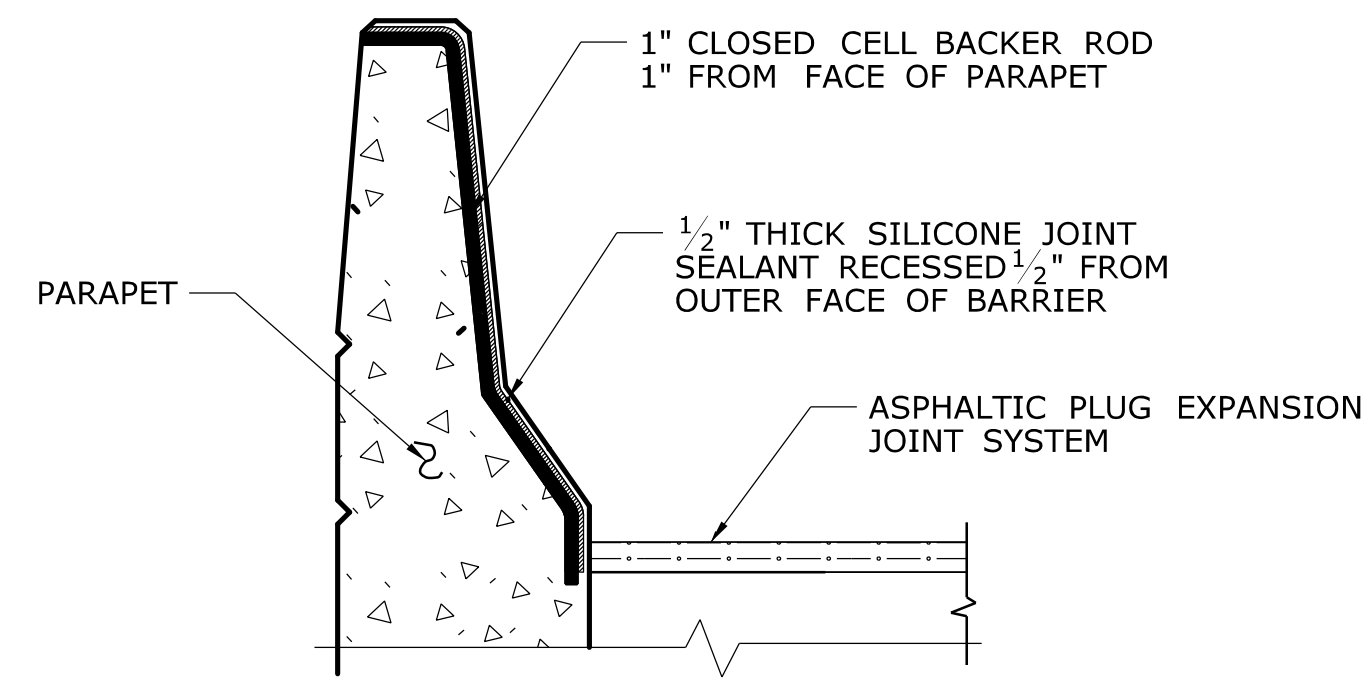


INSTALLATION OF ASPHALTIC PLUG JOINTS AT PIERS WITH FINGER JOINT PLATES
SCALE: 3/4" = 1'-0"

SECTION H

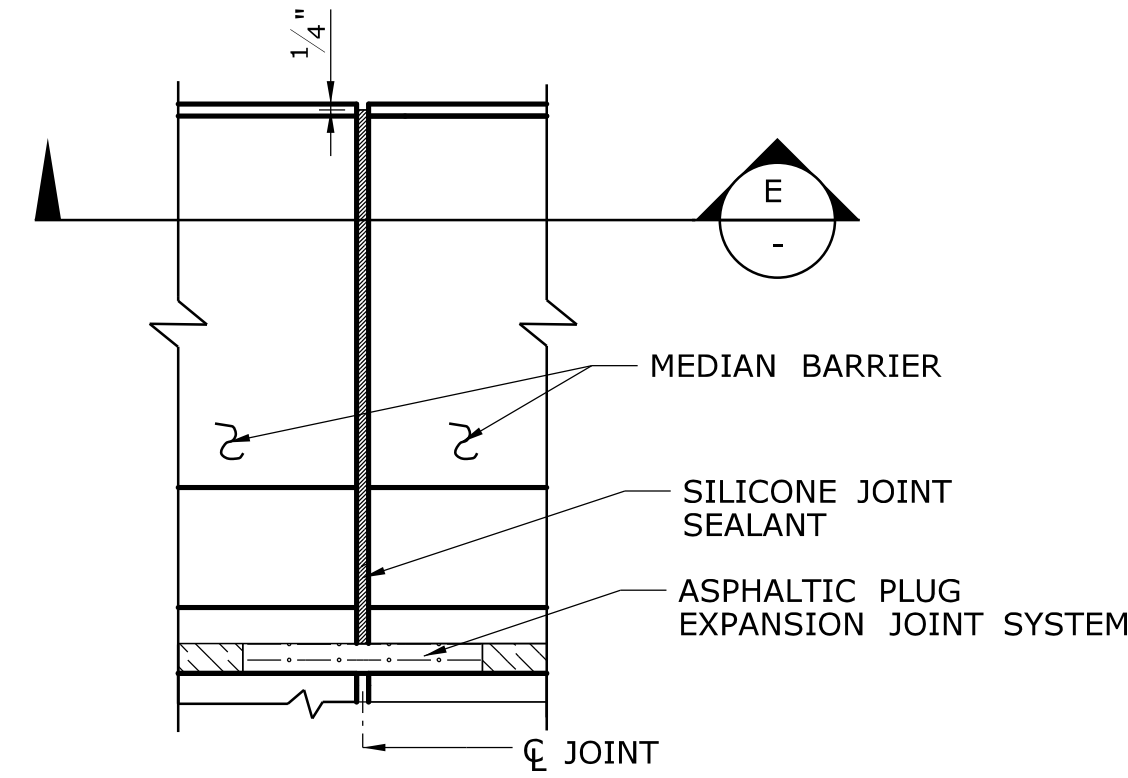
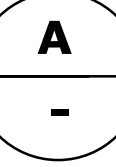
- NOTES:**
1. THE REMOVAL OF ALL EXISTING JOINT MATERIAL AND BITUMINOUS CONCRETE WITHIN THE LIMITS OF THE PROPOSED JOINT TO BE PAID FOR UNDER THE ITEM "ASPHALTIC PLUG EXPANSION JOINT SYSTEM"
 2. WHERE EXISTING BRIDGE DECK JOINTS ARE CONCEALED BENEATH BITUMINOUS CONCRETE OVERLAY THE CONTRACTOR SHALL VERIFY THE BRIDGE DECK JOINT LOCATION AND HAVE THE LIMITS OF SAW CUTTING APPROVED BY THE ENGINEER.
 3. LIMITS OF SAW CUTTING (1" MIN. BEYOND EXISTING PLUG JOINT OR AS DIRECTED BY THE ENGINEER) SHALL BE PAID FOR UNDER THE ITEM "ASPHALTIC PLUG EXPANSION JOINT SYSTEM" (TYP.)
 4. NEW STEEL BRIDGING PLATES SHALL HAVE A MINIMUM THICKNESS OF 1/4". FOR JOINT OPENINGS THAT EXCEED 3" A 3/8" THICK BY 12" WIDE SHALL BE REQUIRED.

DESIGNER/DRAFTER: -	<p>STATE OF CONNECTICUT DEPARTMENT OF TRANSPORTATION</p>	SIGNATURE/ BLOCK: -	PROJECT TITLE: -	TOWN: -	PROJECT NO. -
CHECKED BY: -		OFFICE OF ENGINEERING	DRAWING NO. -	DRAWING TITLE: ASPHALTIC PLUG JOINT DETAILS 1	SHEET NO. \$\$\$
SCALE AS NOTED	Plotted Date: 1/5/2010	APPROVED BY: -	DATE: -		
REV. DATE	REVISION DESCRIPTION	SHEET NO.			



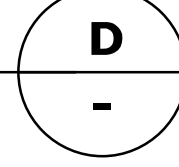
JOINT TREATMENT AT PARAPET

SCALE: 3/4" = 1'-0"



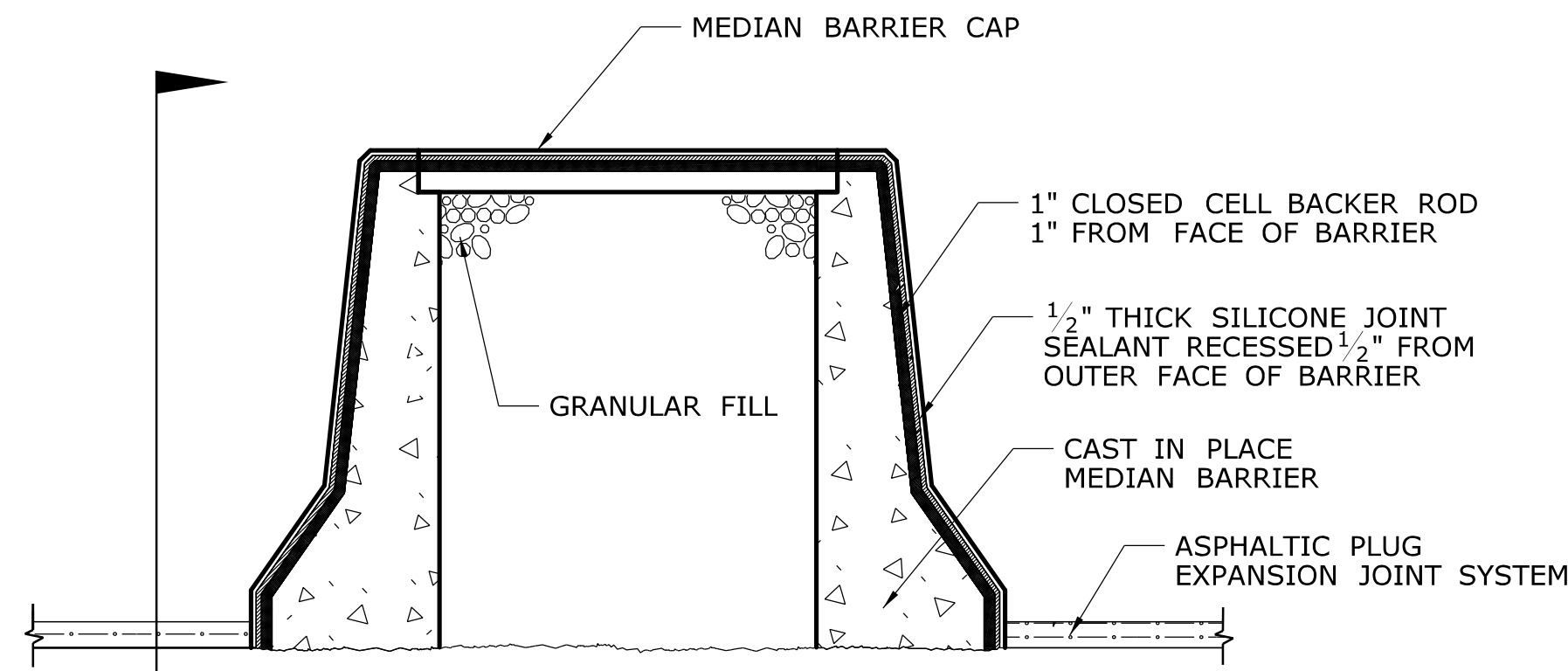
VIEW

SCALE: 3/4" = 1'-0"



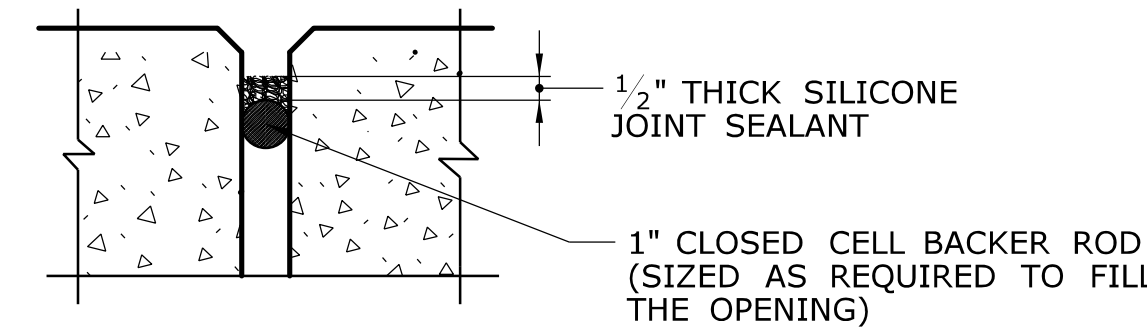
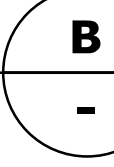
NOTE:

PRIOR TO INSTALLING THE NEW BACKER ROD AND SILICONE JOINT SEALANT, REMOVE EXISTING JOINT MATERIAL. CLEAN JOINT SIDES BY SANDBLASTING. DUST SHALL BE REMOVED BY THE METHOD APPROVED BY THE ENGINEER. THIS WORK WILL BE PAID FOR UNDER THE ITEM "ASPHALTIC PLUG EXPANSION JOINT SYSTEM".



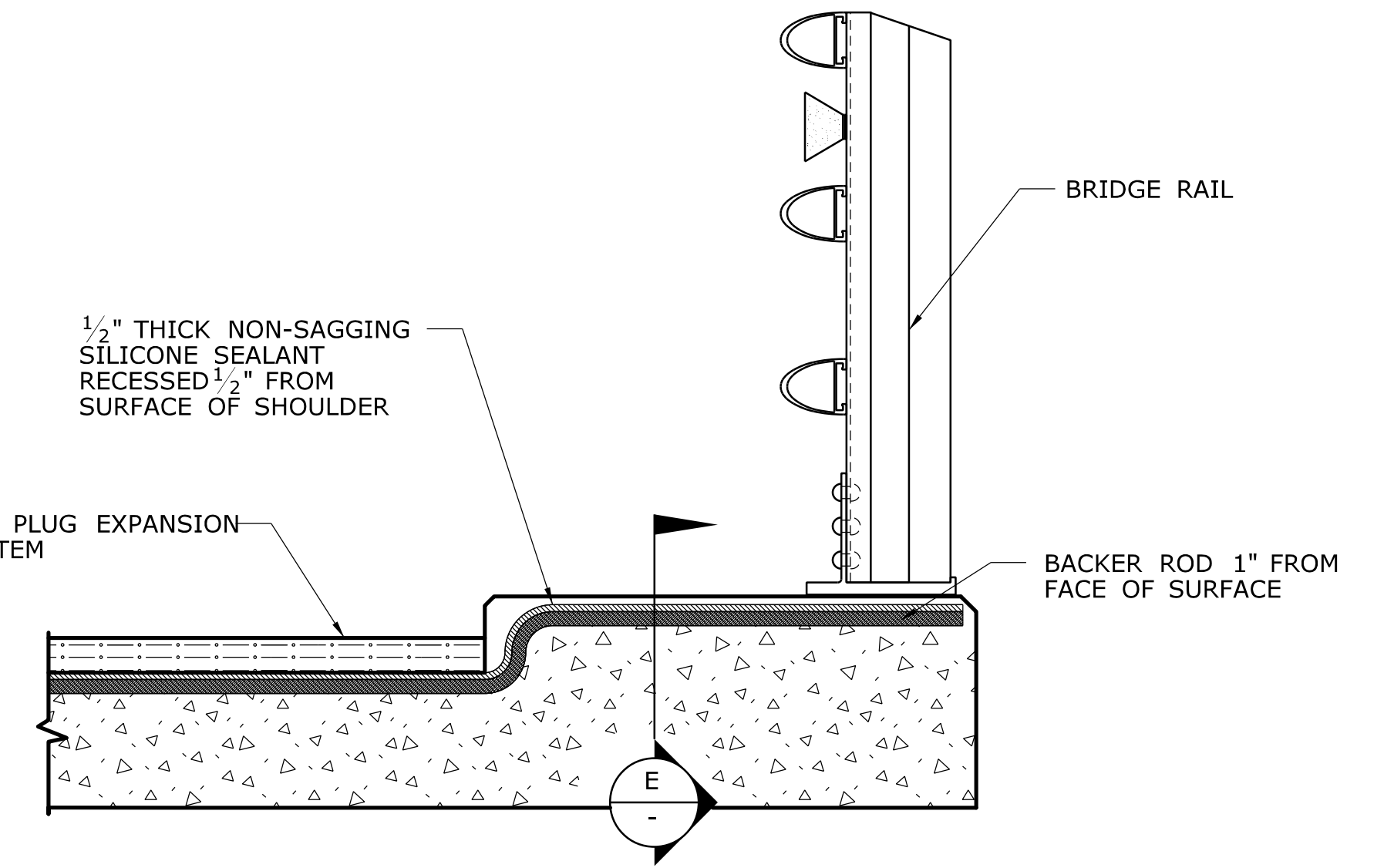
JOINT TREATMENT AT CONCRETE MEDIAN BARRIER WITH CAP

SCALE: 3/4" = 1'-0"



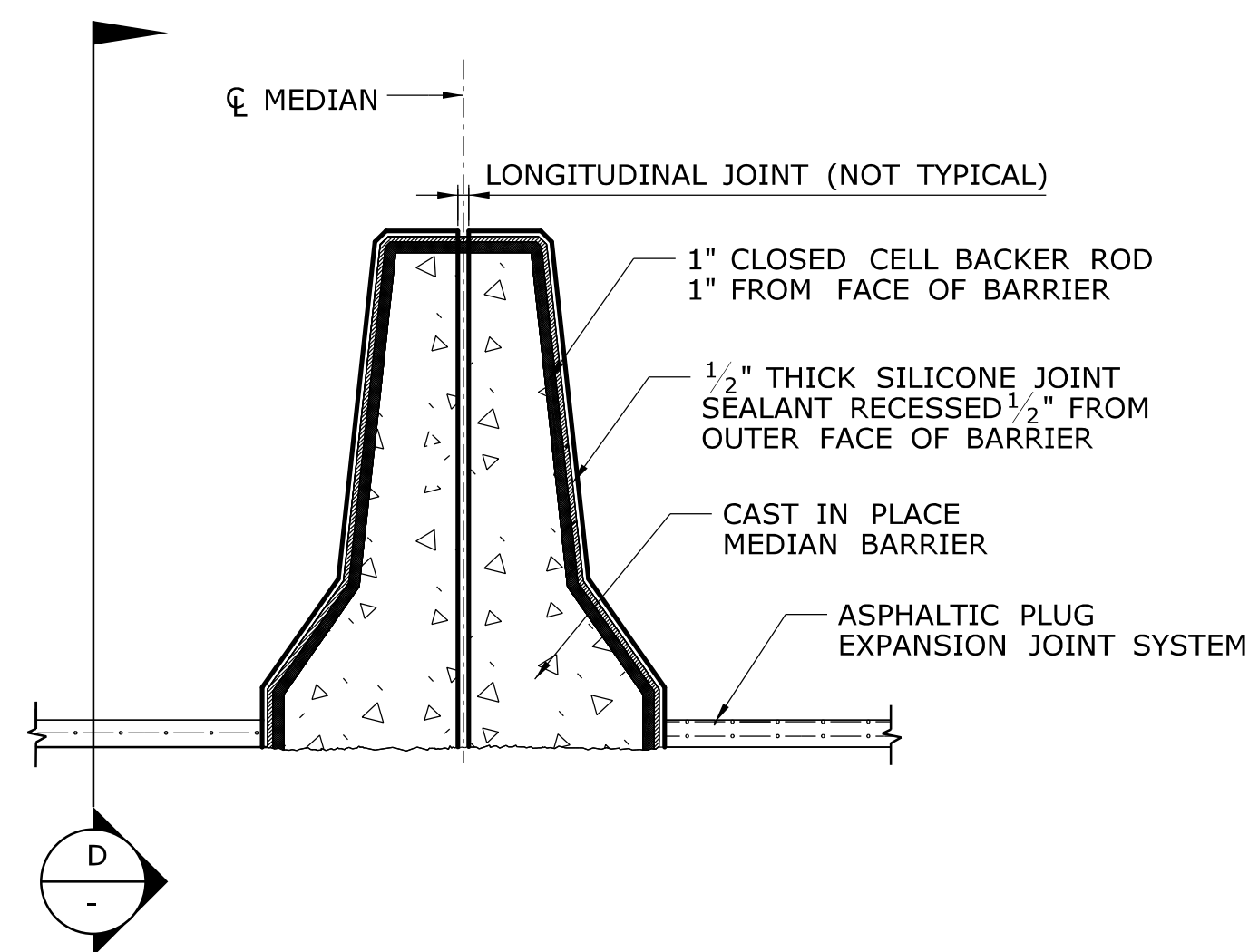
SECTION THROUGH MEDIAN/SHOULDER BARRIER JOINT

NTS



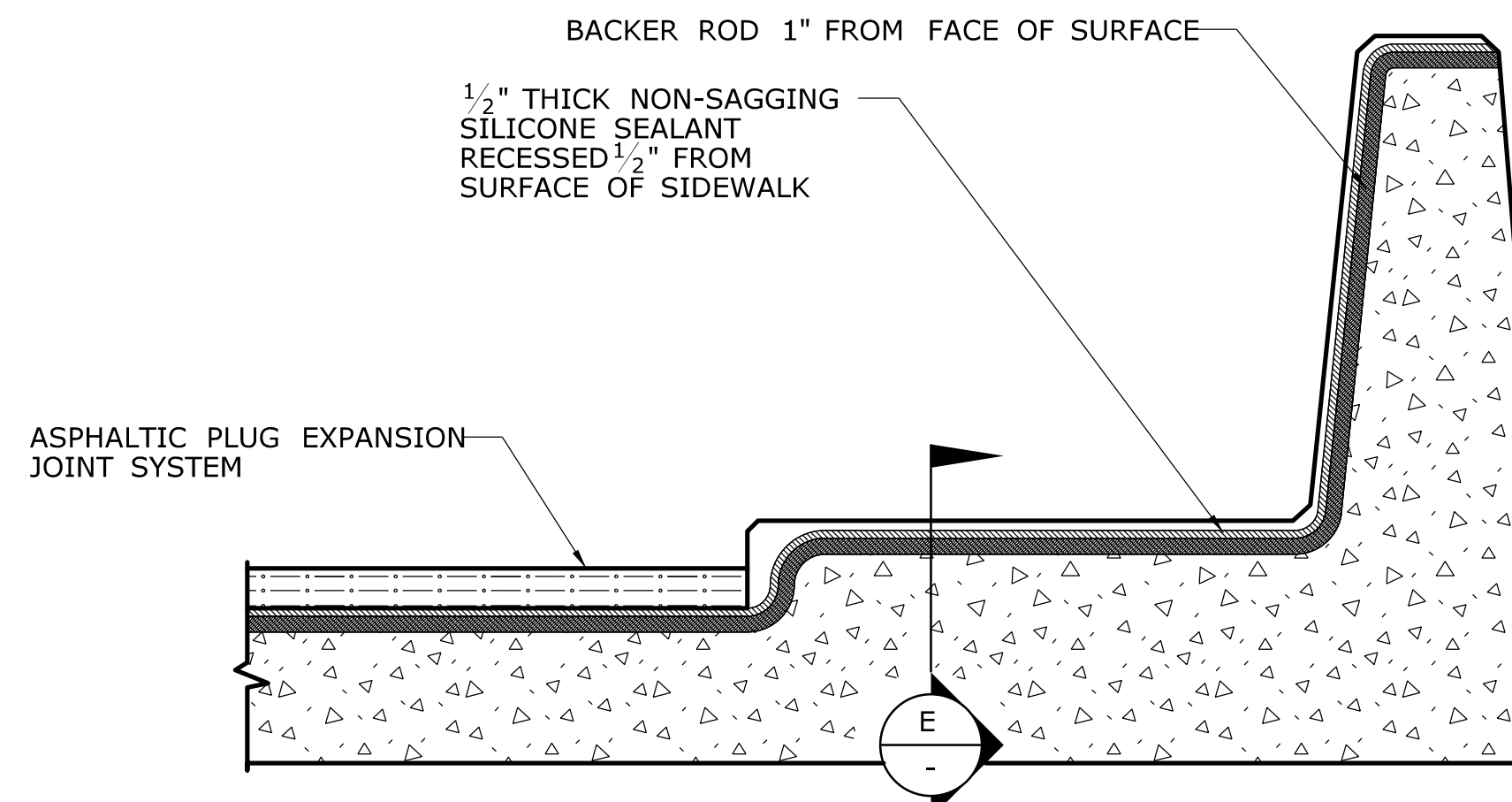
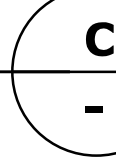
JOINT TREATMENT AT RAISED SHOULDER

NTS



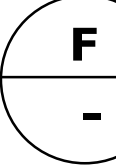
JOINT TREATMENT AT CONCRETE MEDIAN BARRIER

SCALE: 3/4" = 1'-0"



**JOINT TREATMENT AT SIDEWALK
(SIMILAR DETAILS APPLY AT RAISED CONCRETE MEDIANS)**

NTS



REV.	DATE	REVISION DESCRIPTION	SHEET NO.

THE INFORMATION, INCLUDING ESTIMATED QUANTITIES OF WORK, SHOWN ON THESE SHEETS IS BASED ON LIMITED INVESTIGATIONS BY THE STATE AND IS IN NO WAY WARRANTED TO INDICATE THE CONDITIONS OF ACTUAL QUANTITIES OF WORK WHICH WILL BE REQUIRED.

DESIGNER/DRAFTER:	-
CHECKED BY:	-



Filename: ...ASPHALTIC PLUG JOINTS.dgn

SIGNATURE/BLOCK:	-
APPROVED BY:	DATE:

PROJECT TITLE:	-
----------------	---

TOWN:	-
DRAWING TITLE:	ASPHALTIC PLUG JOINT DETAILS 2

PROJECT NO.	-
DRAWING NO.	-
SHEET NO.	\$\$\$