

**LEGEND**

- Prime Farmland Soils
- Farmland of Statewide Importance
- Active Farmland

**FARMLAND SOILS**  
 FIGURE 4-3  
 (SHEET 1 of 13)

↑

SCALE IN FEET

0 1000 2000



**INTERSTATE 95**  
**SOUTHEAST CORRIDOR FEASIBILITY STUDY**  
**TOWN OF BRANFORD TO RHODE ISLAND STATE LINE**  
**STATE PROJECT NO. 170-2295 (I-95 se3-26-02)**

I:\040717\04\_01\040717\FINAL\040717\_01\FinalMap.dwg  
 11/14/02 11:00 AM  
 Date Plotted: 11/14/02 11:00 AM  
 Plot Date: 11/14/02 11:00 AM

North  
Branford

Branford

Guilford

### LEGEND

- Prime Farmland Soils
- Farmland of Statewide Importance
- Active Farmland

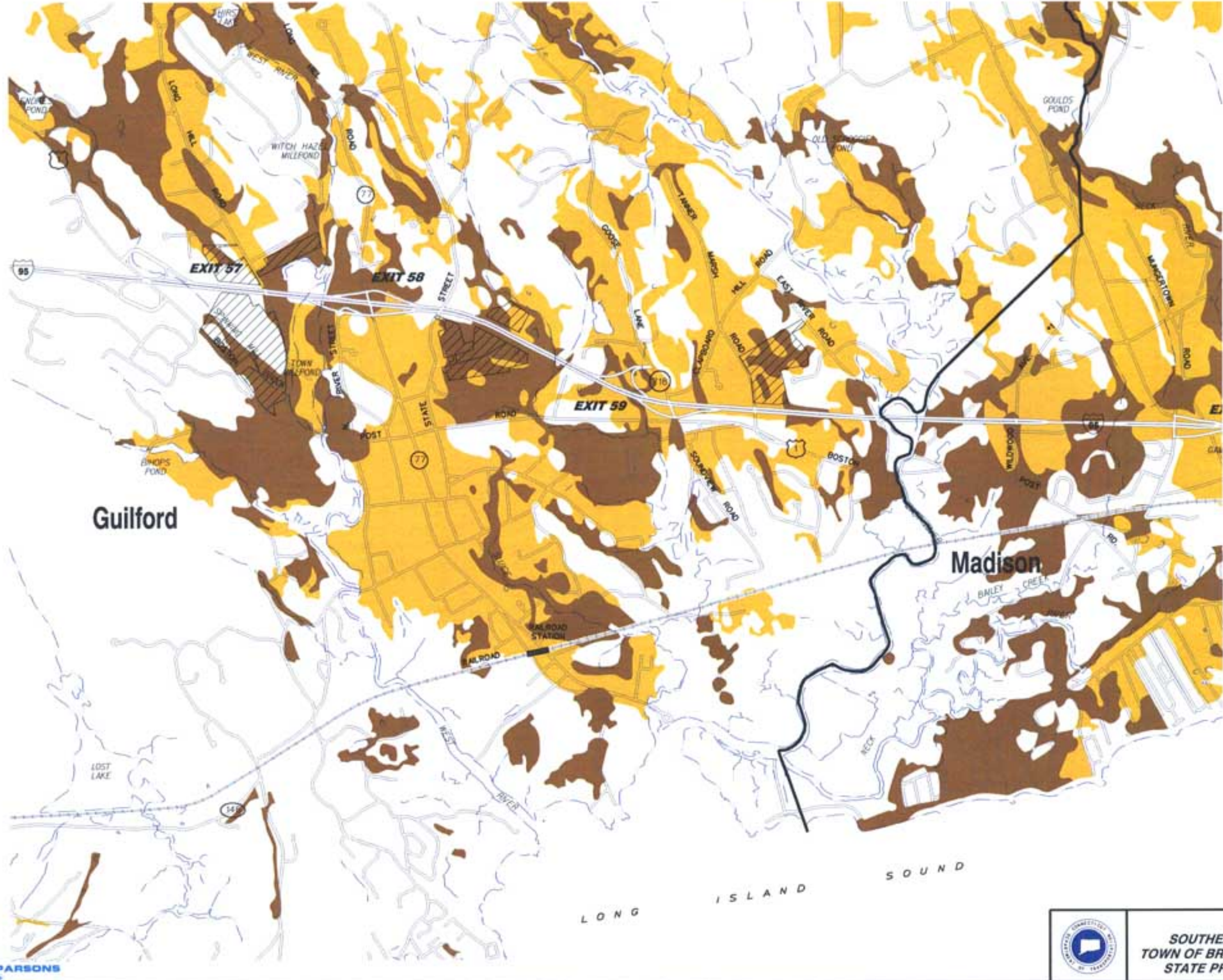
**FARMLAND SOILS**  
FIGURE 4-3  
(SHEET 2 of 13)



**INTERSTATE 95**  
**SOUTHEAST CORRIDOR FEASIBILITY STUDY**  
**TOWN OF BRANFORD TO RHODE ISLAND STATE LINE**  
**STATE PROJECT NO. 170-2295 (I-95 se3-26-02)**

**PARSONS**

14-00000000-00-00-00000000-00-00-00000000.dwg  
1/1/2003 11:00:00 AM  
1/1/2003 11:00:00 AM  
1/1/2003 11:00:00 AM



### LEGEND

- Prime Farmland Soils
- Farmland of Statewide Importance
- Active Farmland

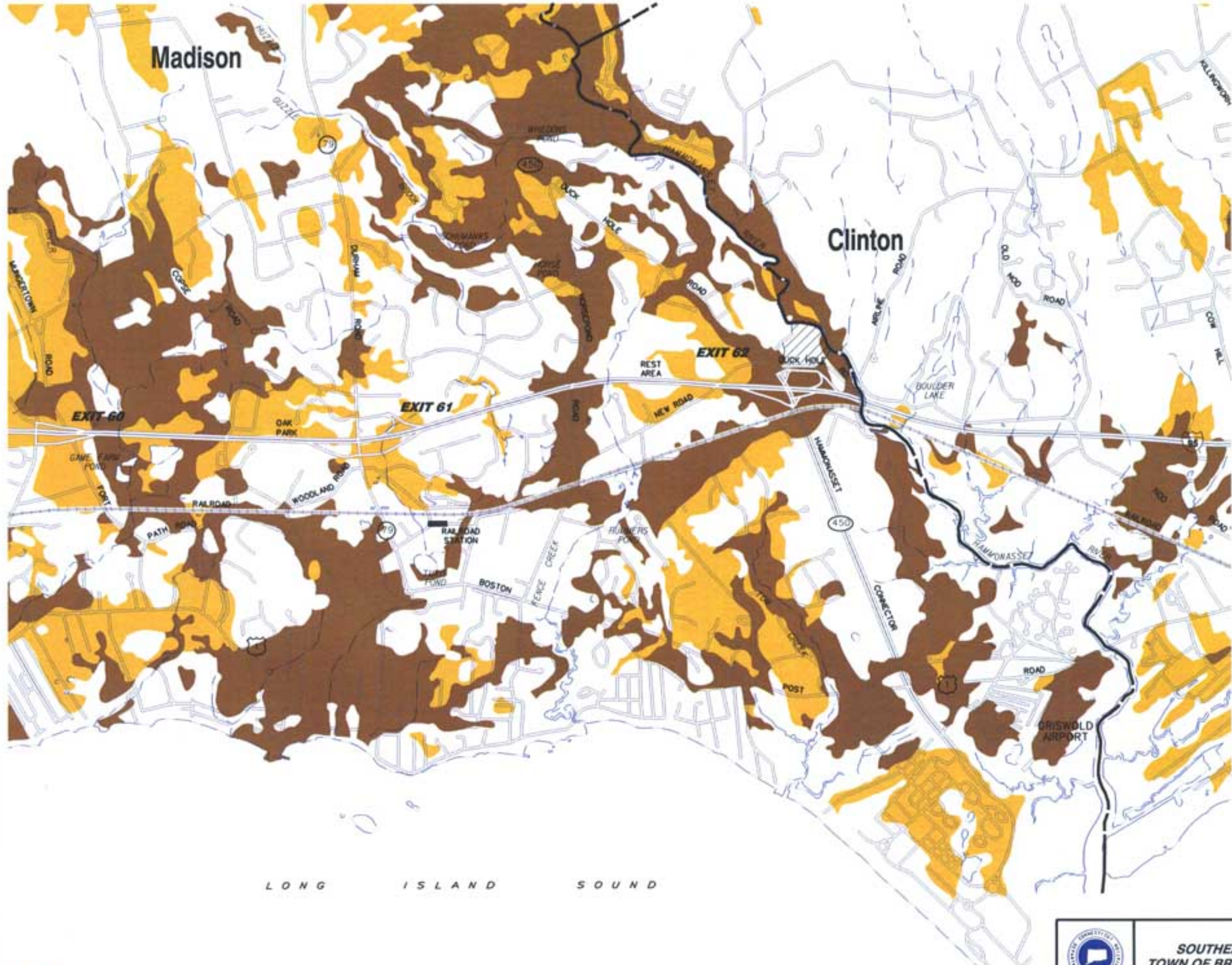
**FARMLAND SOILS**  
 FIGURE 4-3  
 (SHEET 3 of 13)



**INTERSTATE 95**  
**SOUTHEAST CORRIDOR FEASIBILITY STUDY**  
**TOWN OF BRANFORD TO RHODE ISLAND STATE LINE**  
**STATE PROJECT NO. 170-2295 (I-95 se3-26-02)**

I:\COMPS\95NOV\_P\LETTING\020\00L\LETTING\TOWNSHIP\Map\_S03.mxd  
 11/27/2003 11:58:11 AM  
 State of Vermont, Department of Transportation, 100 State Street, Montpelier, VT 05602  
 Map No. 170-2295-03-02

PARSONS



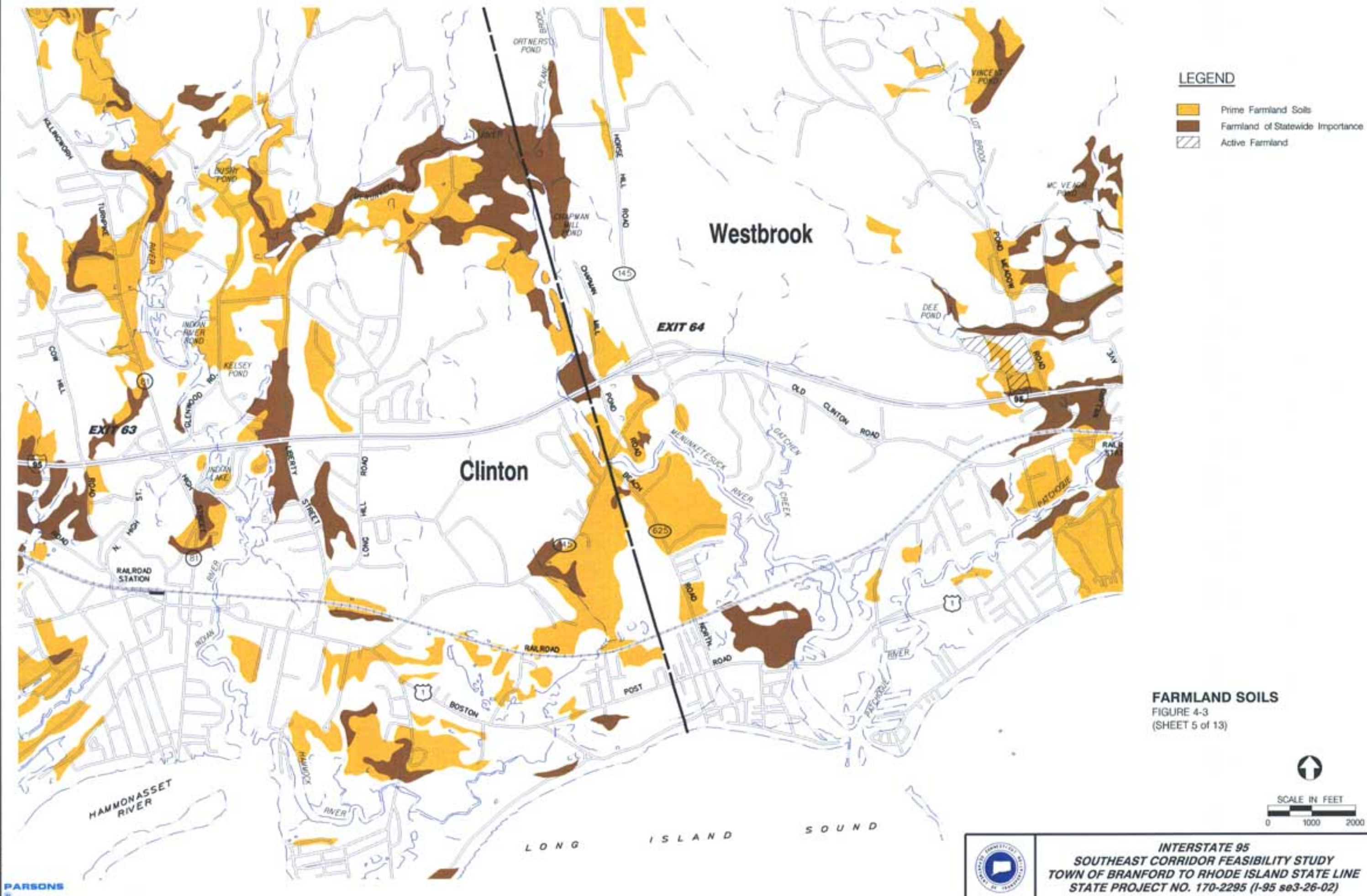
LEGEND

- Prime Farmland Soils
- Farmland of Statewide Importance
- Active Farmland

FARMLAND SOILS  
FIGURE 4-3  
(SHEET 4 of 13)



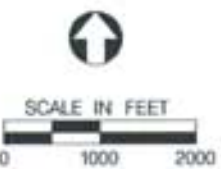
INTERSTATE 95  
SOUTHEAST CORRIDOR FEASIBILITY STUDY  
TOWN OF BRANFORD TO RHODE ISLAND STATE LINE  
STATE PROJECT NO. 170-2295 (I-95 se3-26-02)



**LEGEND**

-  Prime Farmland Soils
-  Farmland of Statewide Importance
-  Active Farmland

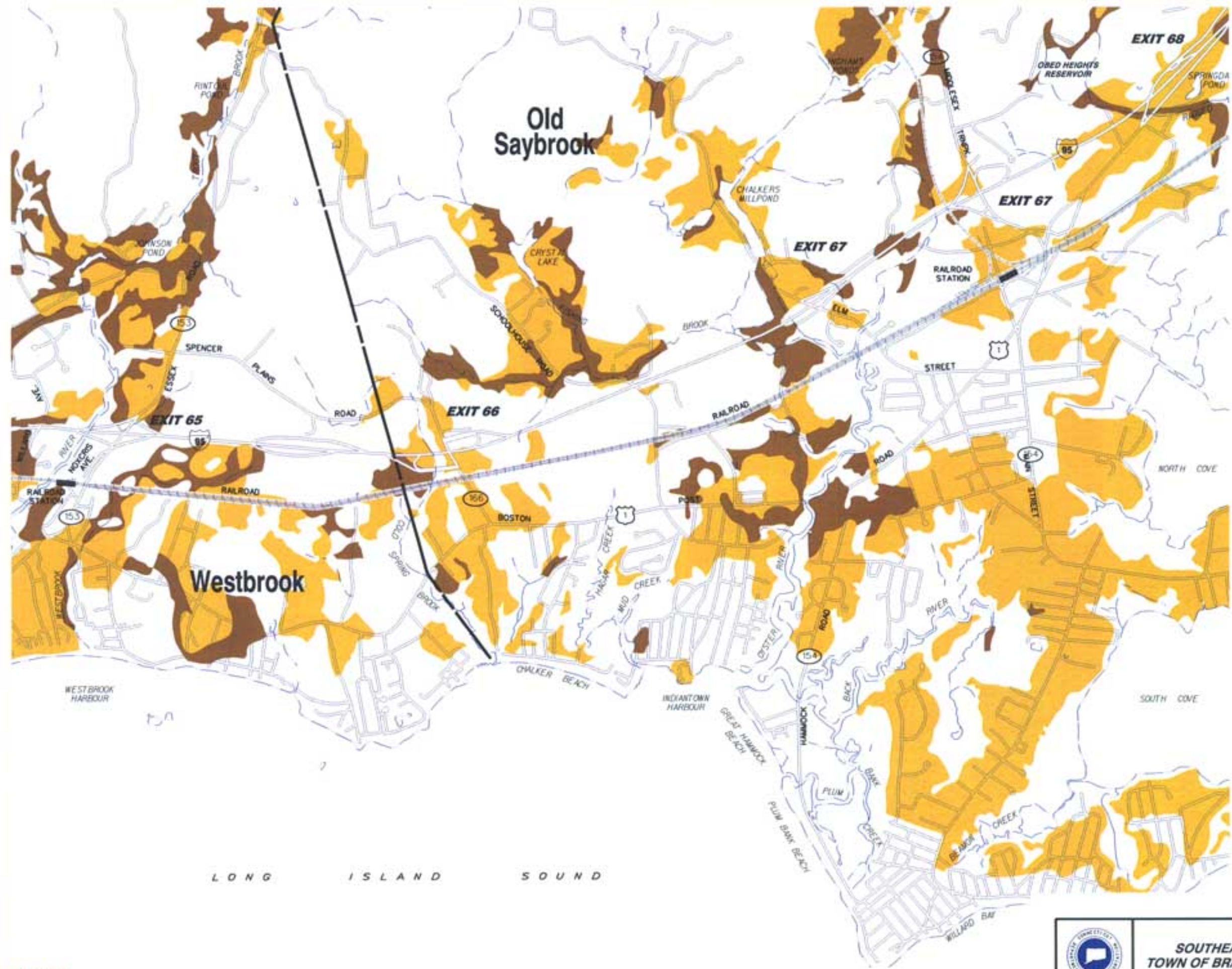
**FARMLAND SOILS**  
 FIGURE 4-3  
 (SHEET 5 of 13)



**INTERSTATE 95  
 SOUTHEAST CORRIDOR FEASIBILITY STUDY  
 TOWN OF BRANFORD TO RHODE ISLAND STATE LINE  
 STATE PROJECT NO. 170-2295 (I-95 se3-26-02)**

PARSONS BRINCKERHOFF CONSULTANTS, INC.  
 100 WEST 30th STREET  
 NEW YORK, NY 10018-7641  
 TEL: (212) 512-2000  
 FAX: (212) 512-2001

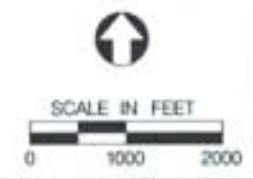
**PARSONS**



**LEGEND**

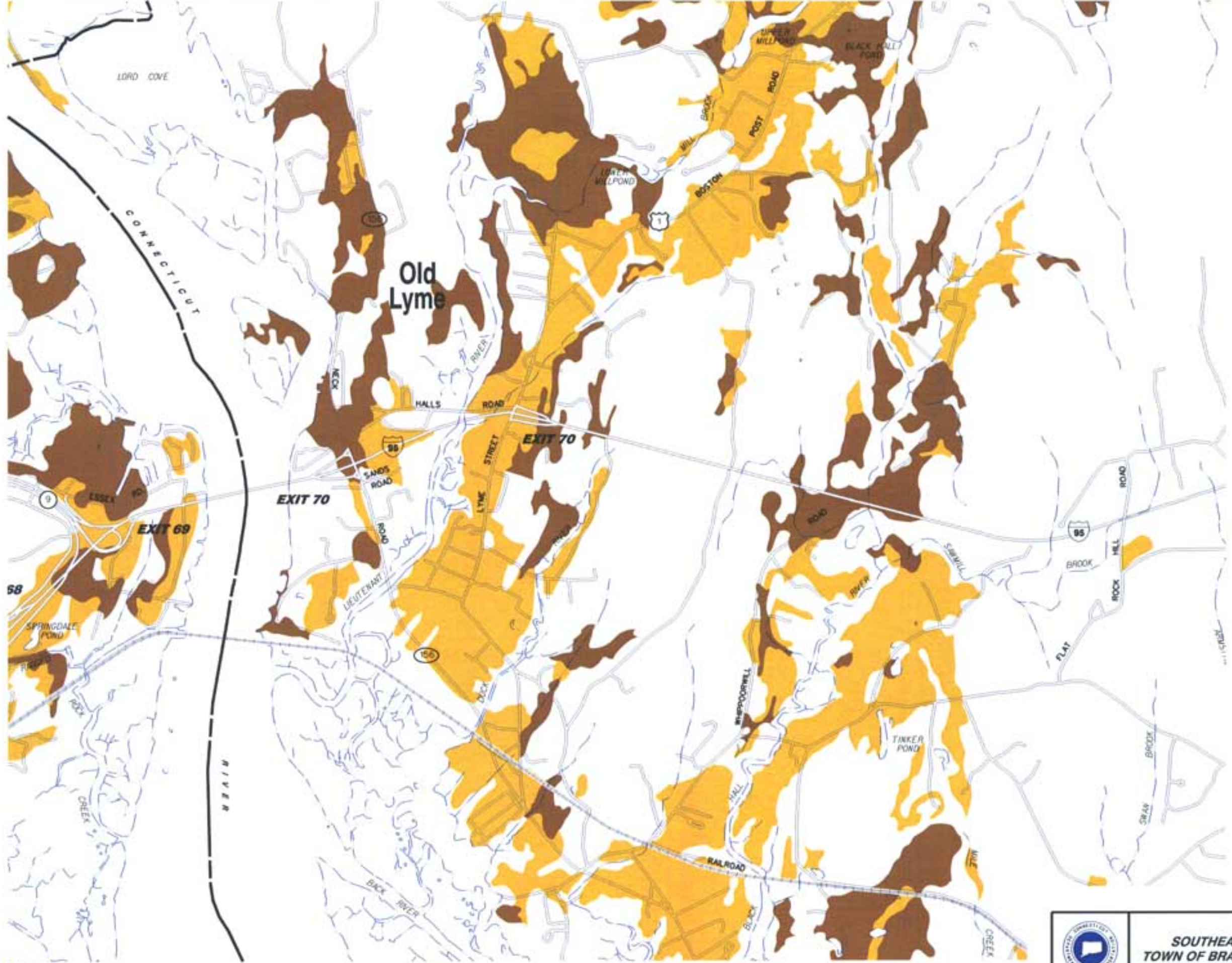
- Prime Farmland Soils
- Farmland of Statewide Importance
- Active Farmland

**FARMLAND SOILS**  
 FIGURE 4-3  
 (SHEET 6 of 13)



**INTERSTATE 95**  
**SOUTHEAST CORRIDOR FEASIBILITY STUDY**  
**TOWN OF BRANFORD TO RHODE ISLAND STATE LINE**  
**STATE PROJECT NO. 170-2295 (I-95 se3-26-02)**

V:\GARDNER\GIS\PROJECTS\I95CORRIDOR\I95CORRIDOR\_S06.aprx  
 V:\GARDNER\GIS\PROJECTS\I95CORRIDOR\I95CORRIDOR\_S06.aprx  
 V:\GARDNER\GIS\PROJECTS\I95CORRIDOR\I95CORRIDOR\_S06.aprx  
 Date: Mar 27 10:24:18 2003



**LEGEND**

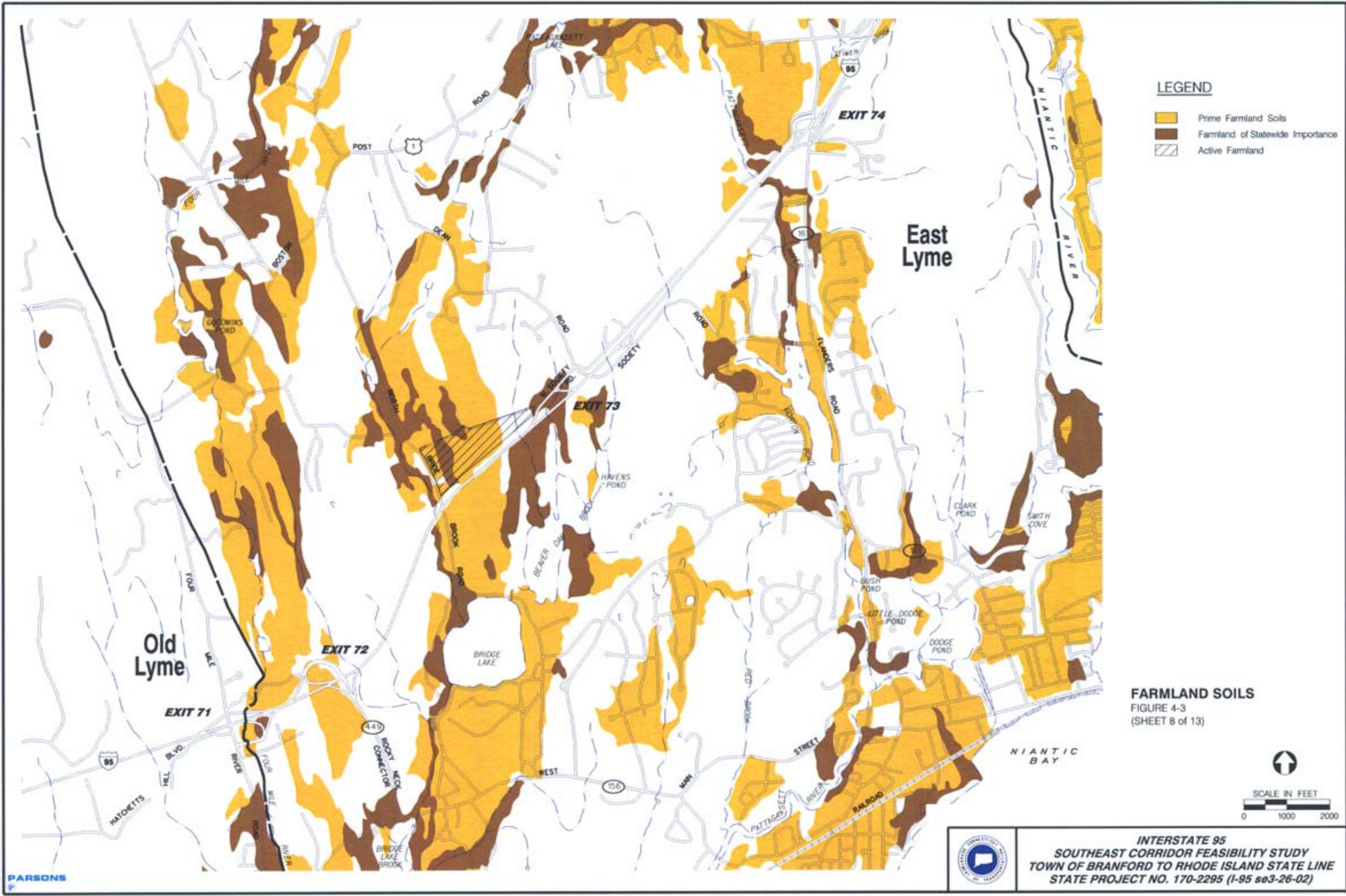
- Prime Farmland Soils
- Farmland of Statewide Importance
- Active Farmland

**FARMLAND SOILS**  
 FIGURE 4-3  
 (SHEET 7 of 13)



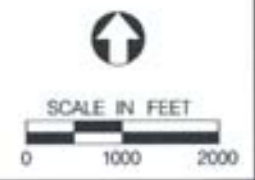
**INTERSTATE 95**  
**SOUTHEAST CORRIDOR FEASIBILITY STUDY**  
**TOWN OF BRANFORD TO RHODE ISLAND STATE LINE**  
**STATE PROJECT NO. 170-2295 (I-95 s03-26-02)**

V:\040117\2014\2014\_01\170-2295\170-2295-02\Farmland\_Soils\_01.mxd  
 1/21/2014 10:00:00 AM  
 1/21/2014 10:00:00 AM  
 1/21/2014 10:00:00 AM  
 1/21/2014 10:00:00 AM



- LEGEND**
- Prime Farmland Soils
  - Farmland of Statewide Importance
  - Active Farmland

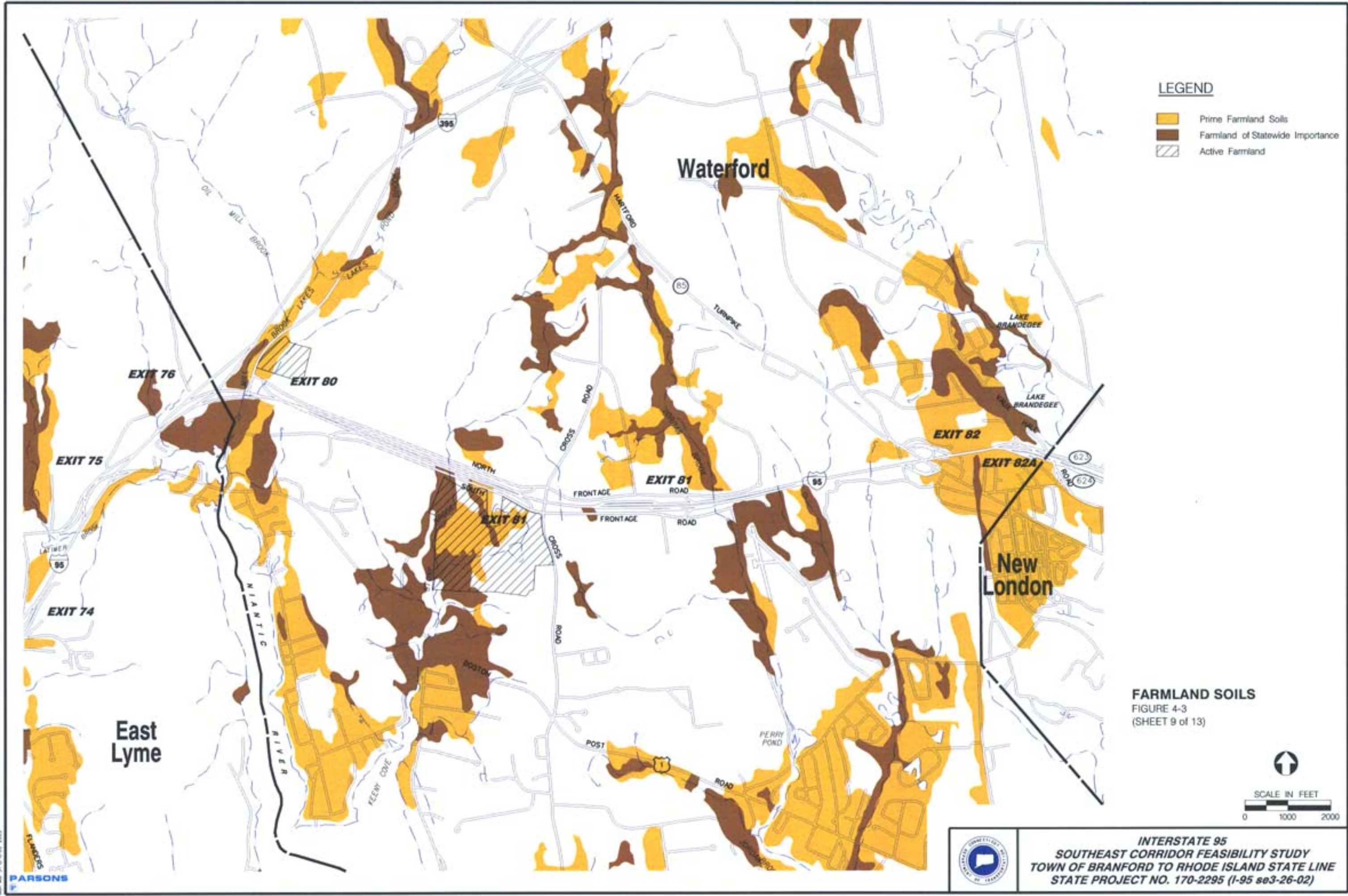
**FARMLAND SOILS**  
 FIGURE 4-3  
 (SHEET 8 of 13)



**INTERSTATE 95**  
**SOUTHEAST CORRIDOR FEASIBILITY STUDY**  
**TOWN OF BRANFORD TO RHODE ISLAND STATE LINE**  
**STATE PROJECT NO. 170-2295 (I-95 se3-26-02)**

V:\040119\040119\_01\040119\_01\040119\_01\Farmland\_08.prj  
 V:\040119\040119\_01\040119\_01\Farmland\_08.prj  
 V:\040119\040119\_01\040119\_01\Farmland\_08.prj  
 Date: 31/05/03 2:03





**LEGEND**

- Prime Farmland Soils
- Farmland of Statewide Importance
- Active Farmland

**FARMLAND SOILS**  
 FIGURE 4-3  
 (SHEET 9 of 13)

SCALE IN FEET

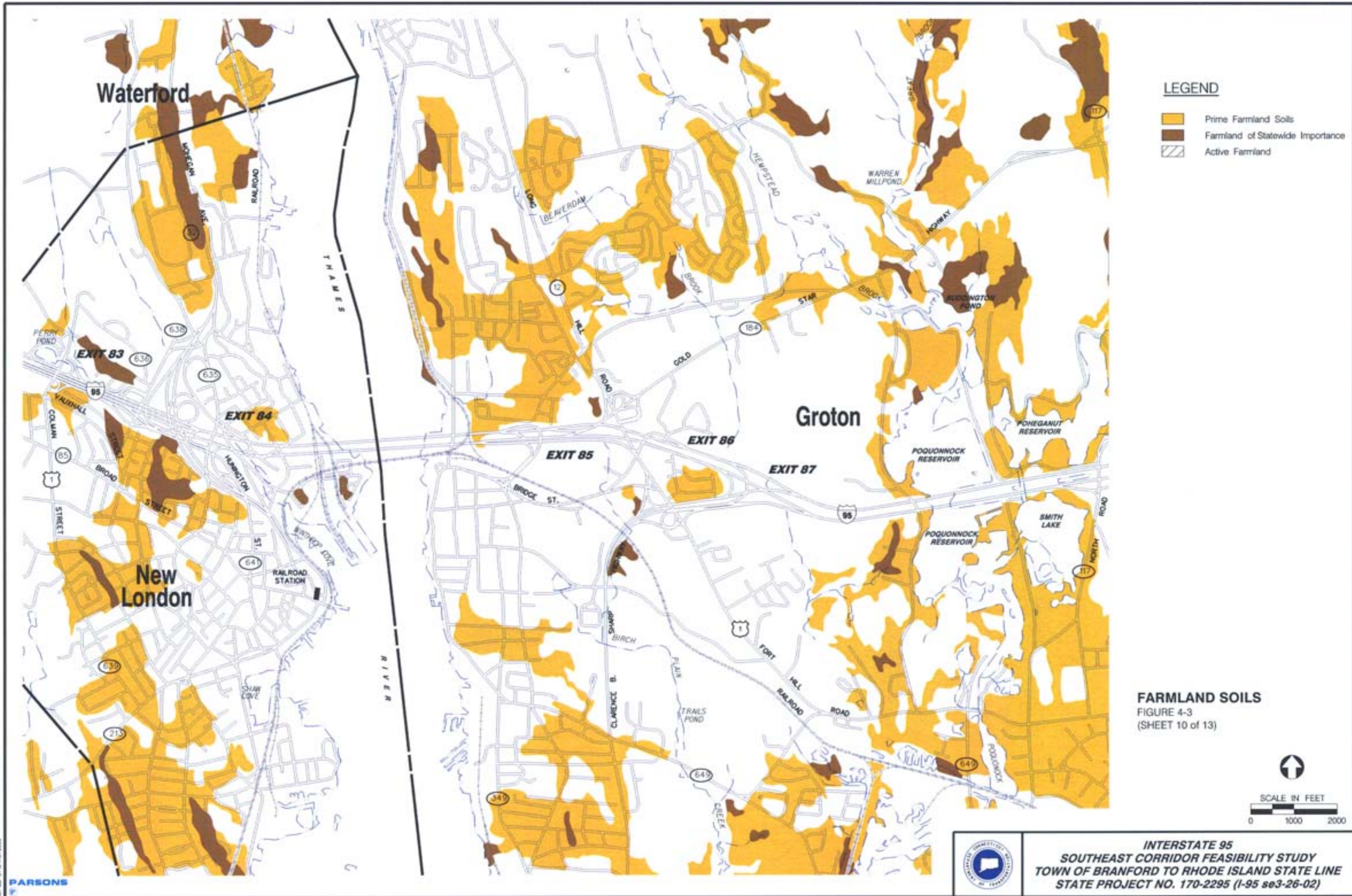
0 1000 2000

↑

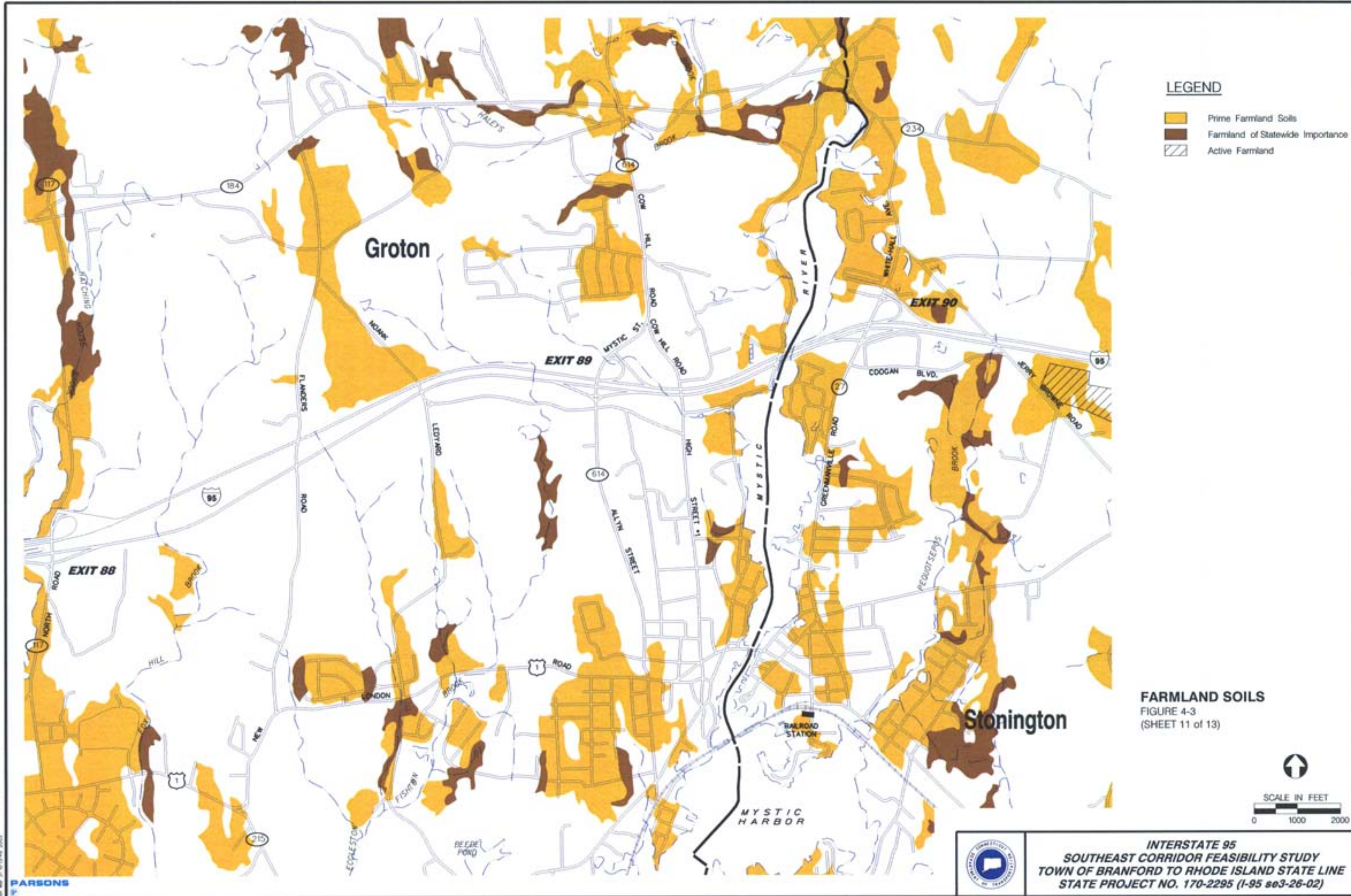
**INTERSTATE 95**  
**SOUTHEAST CORRIDOR FEASIBILITY STUDY**  
**TOWN OF BRANFORD TO RHODE ISLAND STATE LINE**  
**STATE PROJECT NO. 170-2295 (I-95 se3-26-02)**

V:\COMPTON\GIS\PROJECTS\I95\LET\Map\_Sheet\_09.apr  
 V:\COMPTON\GIS\PROJECTS\I95\LET\Map\_Sheet\_09.apr  
 4/11/2003 10:52:00 AM  
 Date: 04/11/2003 10:52:00 AM





V:\data\2010\GIS\ITIN\GIS\DRILL\ET\MapData\10.ppt  
 V:\data\2010\GIS\ITIN\GIS\DRILL\ET\MapData\10.ppt  
 V:\data\2010\GIS\ITIN\GIS\DRILL\ET\MapData\10.ppt  
 V:\data\2010\GIS\ITIN\GIS\DRILL\ET\MapData\10.ppt  
 V:\data\2010\GIS\ITIN\GIS\DRILL\ET\MapData\10.ppt



**LEGEND**

- Prime Farmland Soils
- Farmland of Statewide Importance
- Active Farmland

**FARMLAND SOILS**  
 FIGURE 4-3  
 (SHEET 11 of 13)

↑

SCALE IN FEET

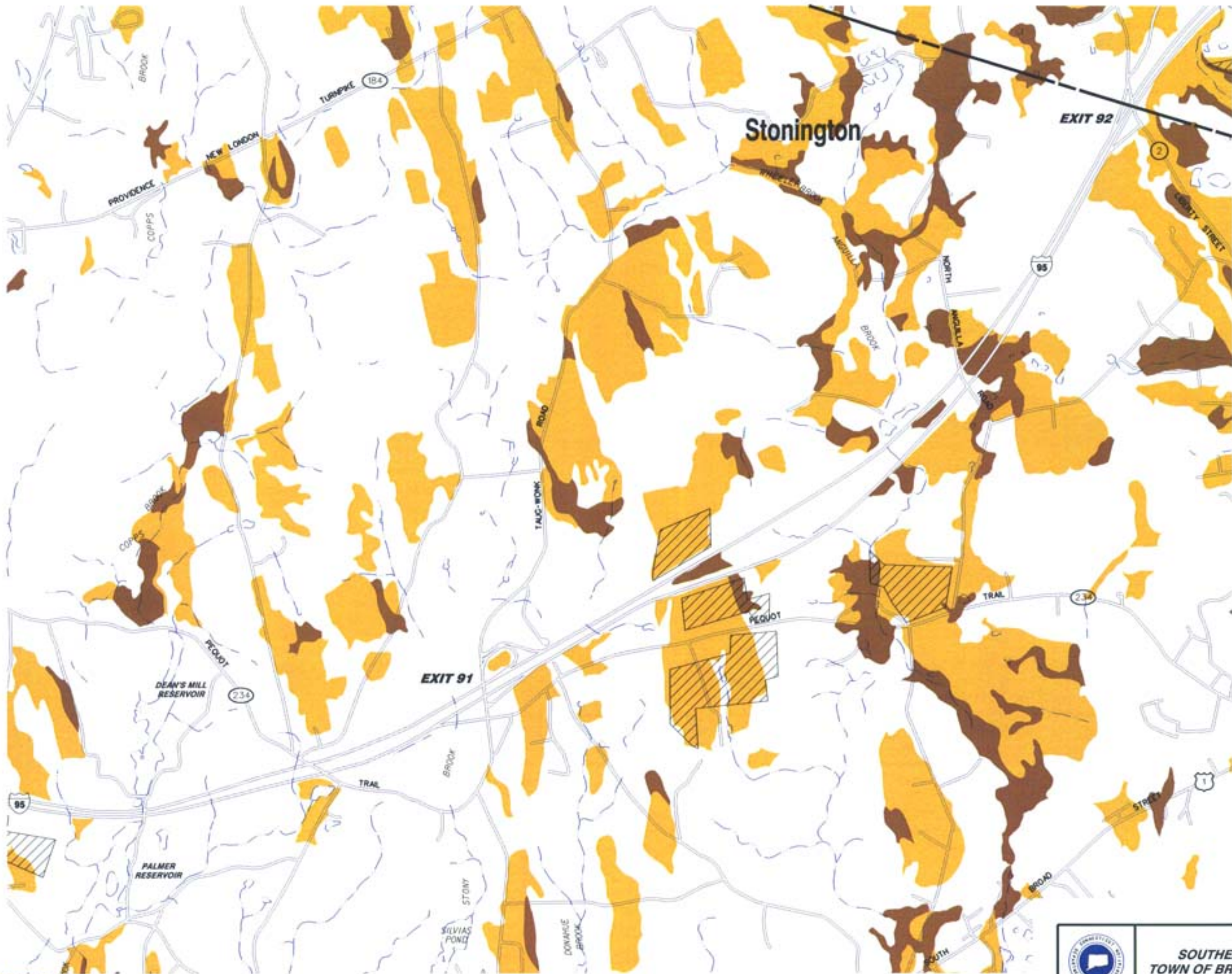
0      1000      2000



**INTERSTATE 95**  
**SOUTHEAST CORRIDOR FEASIBILITY STUDY**  
**TOWN OF BRANFORD TO RHODE ISLAND STATE LINE**  
**STATE PROJECT NO. 170-2295 (I-95 so3-26-02)**

V:\048189\01\_01\_03\GIS\048189\_01\_03\_03\048189\_01\_03\_03\_01.dwg  
 V:\048189\01\_01\_03\GIS\048189\_01\_03\_03\048189\_01\_03\_03\_01.dwg  
 V:\048189\01\_01\_03\GIS\048189\_01\_03\_03\048189\_01\_03\_03\_01.dwg  
 Date: 01/13/03

**PARSONS**



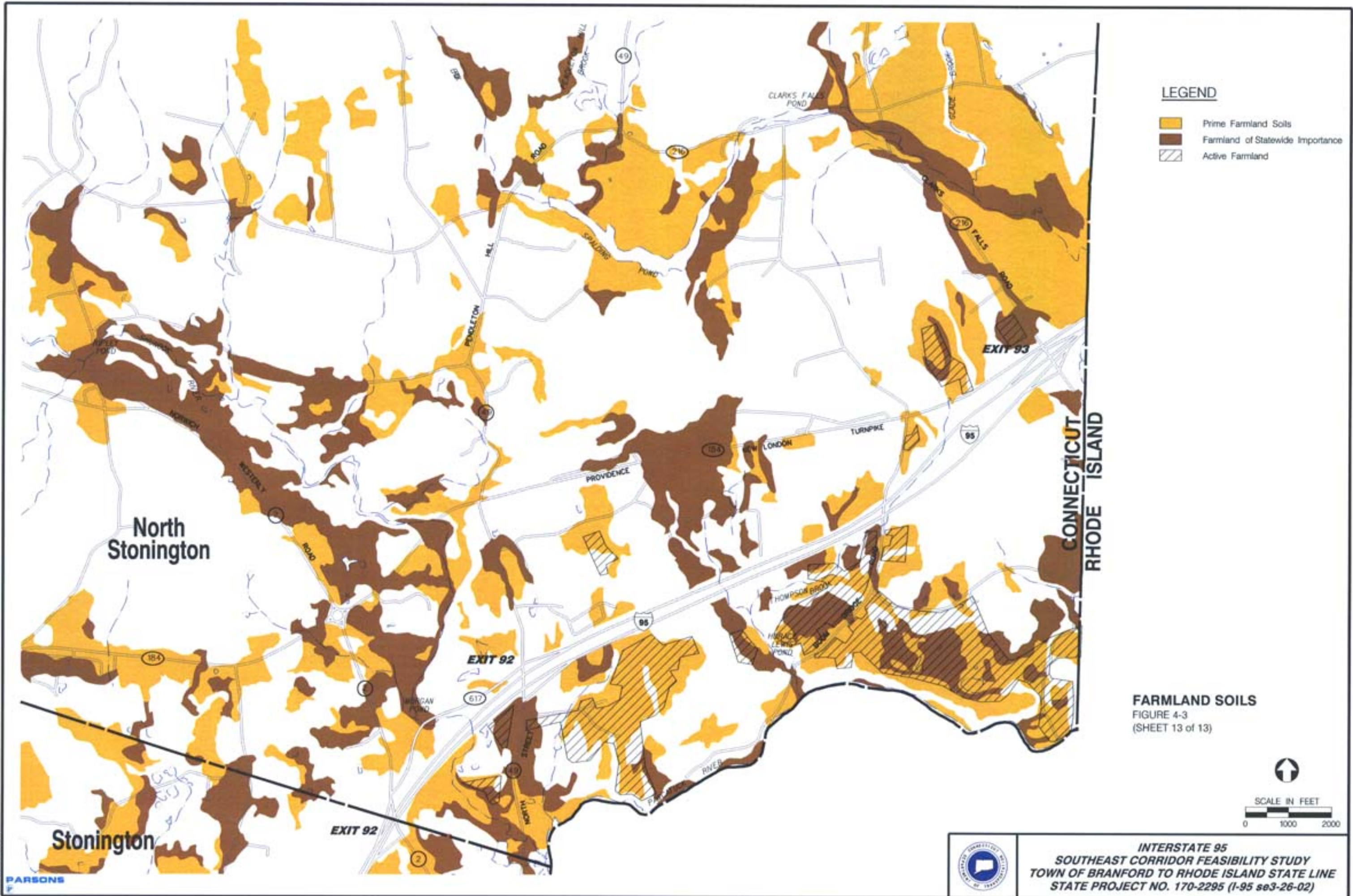
**LEGEND**

- Prime Farmland Soils
- Farmland of Statewide Importance
- Active Farmland

**FARMLAND SOILS**  
 FIGURE 4-3  
 (SHEET 12 of 13)

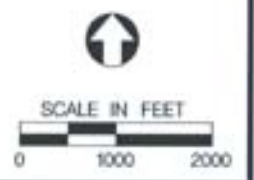


**INTERSTATE 95**  
**SOUTHEAST CORRIDOR FEASIBILITY STUDY**  
**TOWN OF BRANFORD TO RHODE ISLAND STATE LINE**  
**STATE PROJECT NO. 170-2295 (I-95 se3-26-02)**



- LEGEND**
- Prime Farmland Soils
  - Farmland of Statewide Importance
  - Active Farmland

**FARMLAND SOILS**  
 FIGURE 4-3  
 (SHEET 13 of 13)



V:\00001192\GIS\PROJECTS\I-95\I-95\_SOUTHEAST\_CORRIDOR\_FEASIBILITY\_STUDY\BRANFORD\Map\_Sheet\_13\_of\_13.aprx  
 V:\00001192\GIS\PROJECTS\I-95\I-95\_SOUTHEAST\_CORRIDOR\_FEASIBILITY\_STUDY\BRANFORD\Map\_Sheet\_13\_of\_13.aprx  
 V:\00001192\GIS\PROJECTS\I-95\I-95\_SOUTHEAST\_CORRIDOR\_FEASIBILITY\_STUDY\BRANFORD\Map\_Sheet\_13\_of\_13.aprx  
 Date: 21 10/15 2013

