



Public Information Meeting

Draft 2009 Long-Range Transportation Plan

for the

State of Connecticut

(2009-2035)

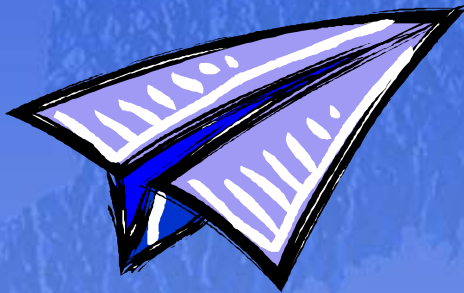
March 2009



Roxane M. Fromson
Supervising Transportation Planner



Bureau of Policy and Planning
Connecticut Department of Transportation



- ❑ PURPOSE OF LRP & FEDERALLY MANDATED FACTORS
- ❑ THE PLANNING PROCESS
- ❑ ISSUES, STRATEGIES & ACTIONS
- ❑ INFLUENCING FACTORS & NEW DIRECTIONS



Draft 2009 LRP: Purpose & Federally Mandated Factors

Purpose of LRP

- ❑ A federally mandated policy document (23 U.S.C. Sec. 135)
- ❑ Prepared by the State of Connecticut's Department of Transportation
 - The federally recognized transportation plan for the State of Connecticut
 - Updated every 3 to 5 years and submitted to Federal Highway Administration (FHWA)
 - Covers at least a 20-year future time horizon
 - Must address 8 specific factors



**Draft 2009 LRP:
Purpose & Federally Mandated Factors**

Federally Mandated Factors

- Emphasize the **preservation** and the **most efficient use** of the existing transportation system
- Promote efficient **system management and operation**
- Support the **economic vitality** of the United States, the States, and metropolitan and non-metropolitan areas
- Increase the **safety of the transportation system** for motorized and nonmotorized users
- Enhance **transportation security** for motorized and nonmotorized users



**Draft 2009 LRP:
Purpose & Federally Mandated Factors**

Federally Mandated Factors

- Increase the **accessibility and mobility options**
- Enhance the **integration and connectivity** of the transportation system, across and between modes
- Protect and enhance the **environment**, promote **energy conservation**, improve **quality of life**, and promote **consistency between transportation improvements** and State and local **planned growth and economic development patterns**

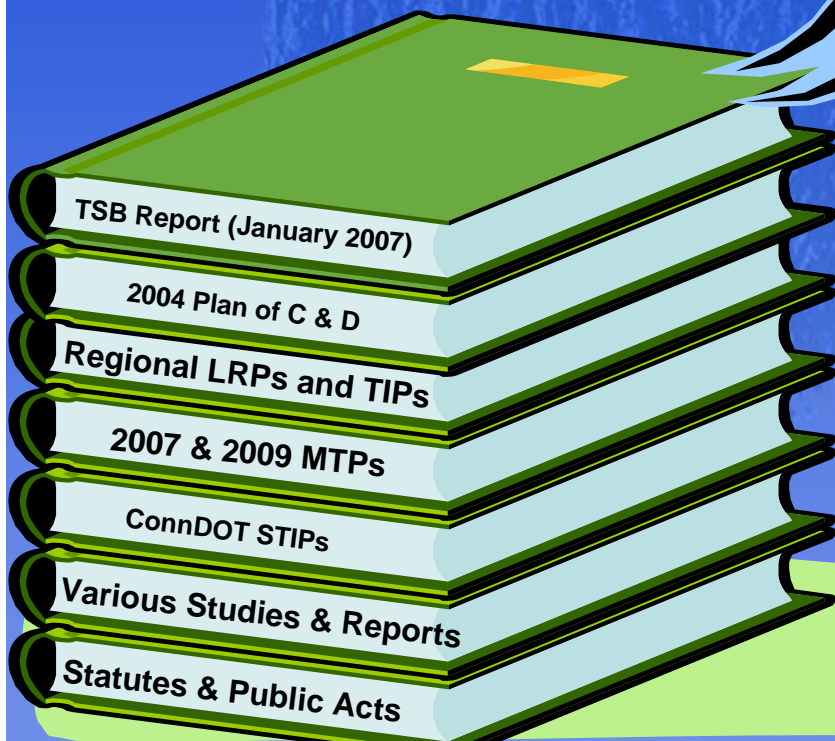
□ THE PLANNING PROCESS

- Information Considered
- Participants in the Transportation Planning Process



Draft 2009 LRP: Planning Process

Relationships of the LRP to Other Planning Documents



Draft 2009 LRP: Planning Process

Documents Considered: Regional Long-Range Transportation Plans

- ❑ Mandated by Section 134 of title 23 U.S. Code & Section 8 of title 49 U.S. Code

- ❑ Prepared by designated Metropolitan Planning Organizations (MPOs) (There are 11 in Connecticut.)
 - Submitted to Federal Highway Administration

 - Must cover a future 20-year period

 - Must address the same 8 factors listed for statewide LRP

 - Must be updated at least every 3 years (All were updated in 2007)

 - Must be developed through a proactive public involvement process

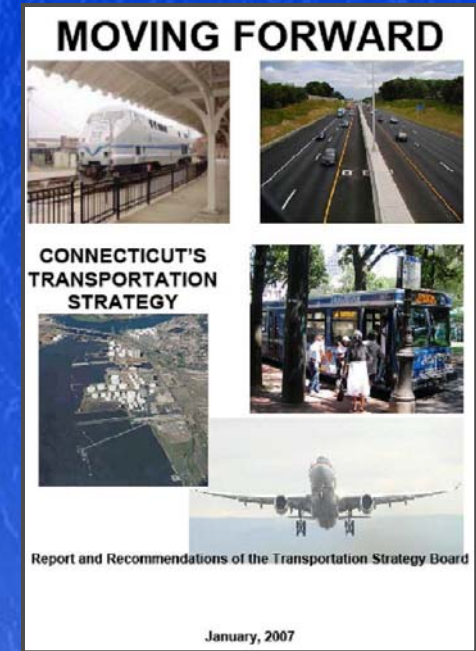
Draft 2009 LRP: Planning Process

Documents Considered: Transportation Strategy Board Report

❑ Mandated by Public Acts 01-5 & 06-136

❑ Prepared by the Transportation Strategy Board

- Proposes a transportation strategy to guide the State for the next 20 years
- Proposes actions and tactics to achieve those strategies during the next 10 years
- Must include a prioritized list of projects to implement strategy
- Estimates capital and operating investments to implement those actions
- Suggests the revenue sources to fund those investments

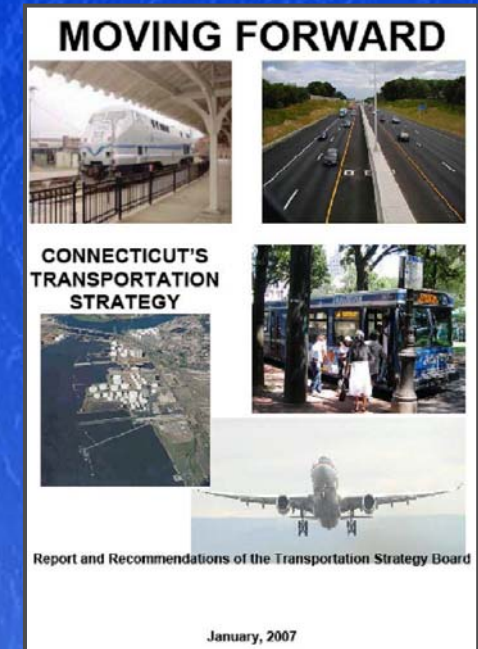


Draft 2009 LRP: Planning Process

Documents Considered: TSB Report TSB Guiding Principles

□ Guiding Principles:

- A **balanced transportation system** that provides mobility for people and goods in a way which meets the needs of users, businesses and commerce is essential.
- Transportation system **must be multi-modal** and **provide options** to the single passenger automobile.
- Transportation system **must be maintained and preserved**.
- Transportation policy **must also reflect the economic, social and environmental needs and policies** of the state. Planning of transportation infrastructure and improvements **must support both economic development and a sustainable environment**.

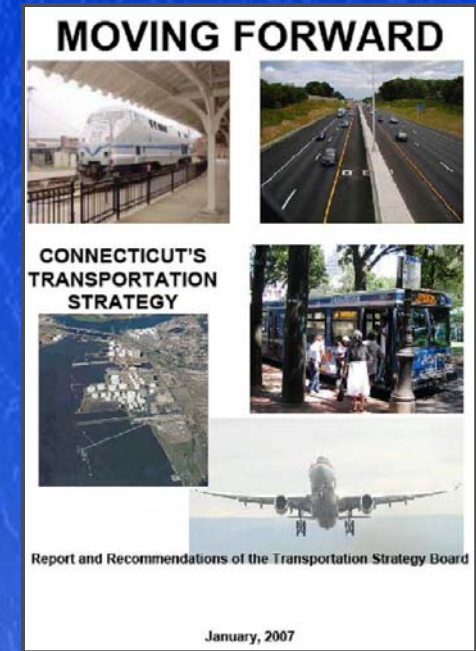


Draft 2009 LRP: Planning Process

Documents Considered: Transportation Strategy Board Report

□ Guiding Principles:

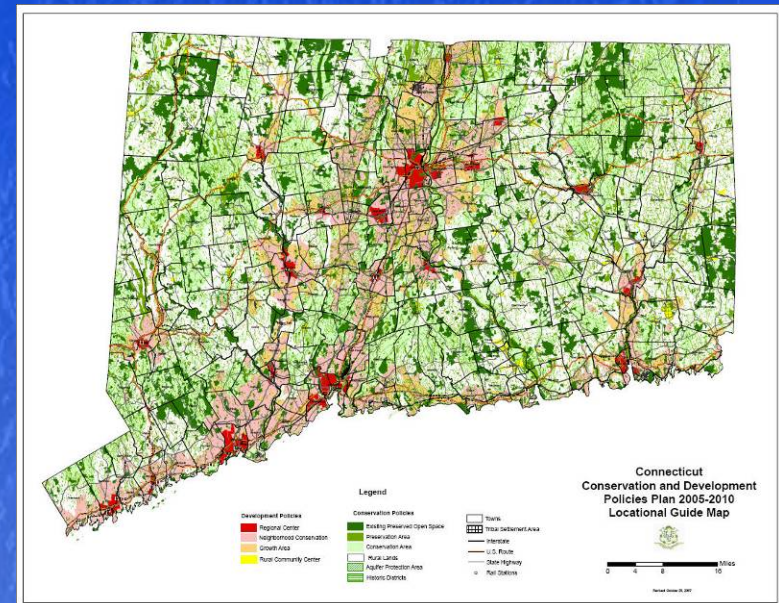
- Transportation system must be **flexible and responsive enough to meet the transportation needs of a wide variety** of customers, including those with special needs
- The provision of **accurate, timely information about transportation systems and services is essential** to the success of the state's transportation system. It must leverage innovation and advances in technology in order to improve service and control costs
- Transportation and development investments **must support responsible growth, transit-oriented development and the State Plan of Conservation and Development**
- Transportation planning, at all levels, **must be comprehensive, inclusive and visionary and must maximize the options** available to decision makers. **Cooperation** between local, state and federal organizations must be encouraged. Whenever possible, transportation investments **should be coordinated with similar planning and investments in neighboring states**



Draft 2009 LRP: Planning Process

Documents Considered: State Plan of Conservation & Development (C & D Plan)

- ❑ Required by State statute (CGS Section 16a-24)
- ❑ Prepared by State Office of Policy & Management
 - A statement of the State's growth, resource management and public investment policies
 - Updated every 5 years
 - Provides framework for administrative & programmatic actions and capital & operational investment decisions of state government which influence future growth & development of Connecticut



Draft 2009 LRP: Planning Process

Documents Considered: Other Pertinent Plans and Documents

□ Environmental Reports

- Connecticut Climate Change Action Plan 2005
- Connecticut Clean Diesel Plan (January 2006)
- Governor's Energy Plan (September 2006)

□ Safety and Modal Reports

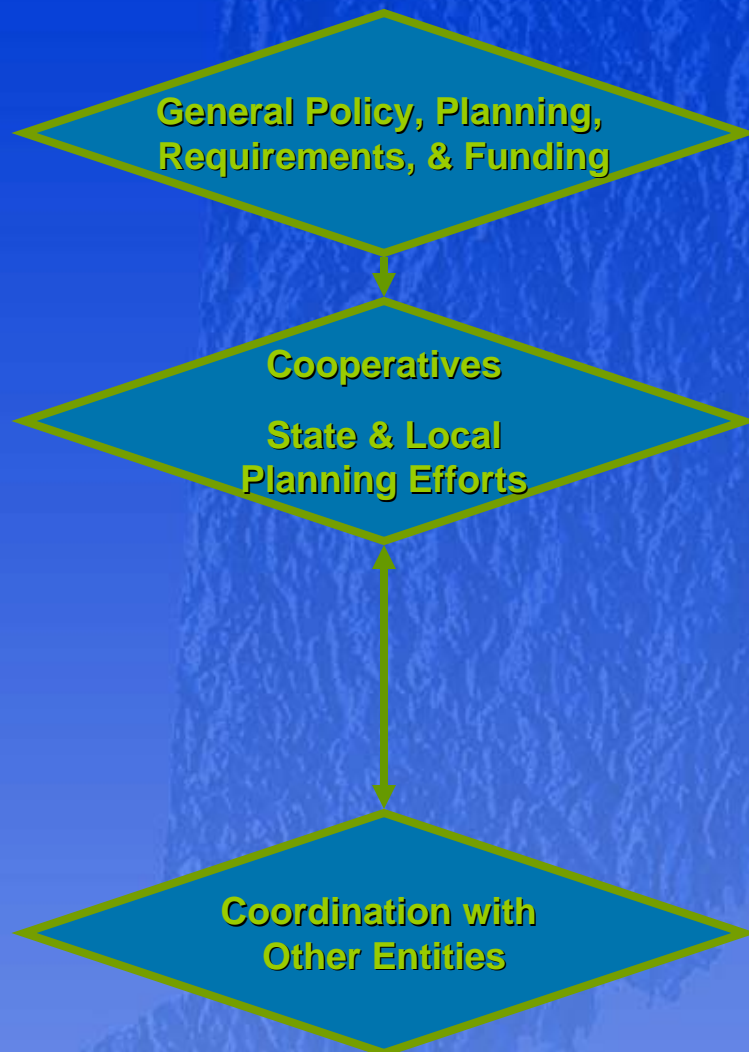
- Strategic Highway Safety Plan (September 2006)
- Connecticut Statewide Airport System Plan (June 2006)
- Connecticut Public Transportation Commission's Annual Report (Dec. 2007)
- Connecticut Rail Commuter Council's Annual Report (2008)
- Connecticut Maritime Commission's Annual Report (2008)
- Transit for Connecticut's "Bus Transit Analysis Needs Study"
- Transit for Connecticut's "Responsible Growth Task Force Report 2008"

□ Other Planning Reports

- Regional Plan Association's report, *Northeast Megaregion 2050: A Common Future* (Nov. 2007)
- Report of the National Surface Transportation Policy and Revenue Study Commission (Dec. 2007)

Draft 2009 LRP: Planning Process

Participants in the Process



- Federal Highway Administration (FHWA)
- Federal Transit Administration (FTA)
- National Highway Traffic Safety Administration (NHTSA)
- Federal Aviation Administration (FAA)

- Connecticut Department of Transportation
- Other State Agencies
- Transit Districts
- Regional Planning Organizations (RPOs)
- Local Governments & Local Community Organizations

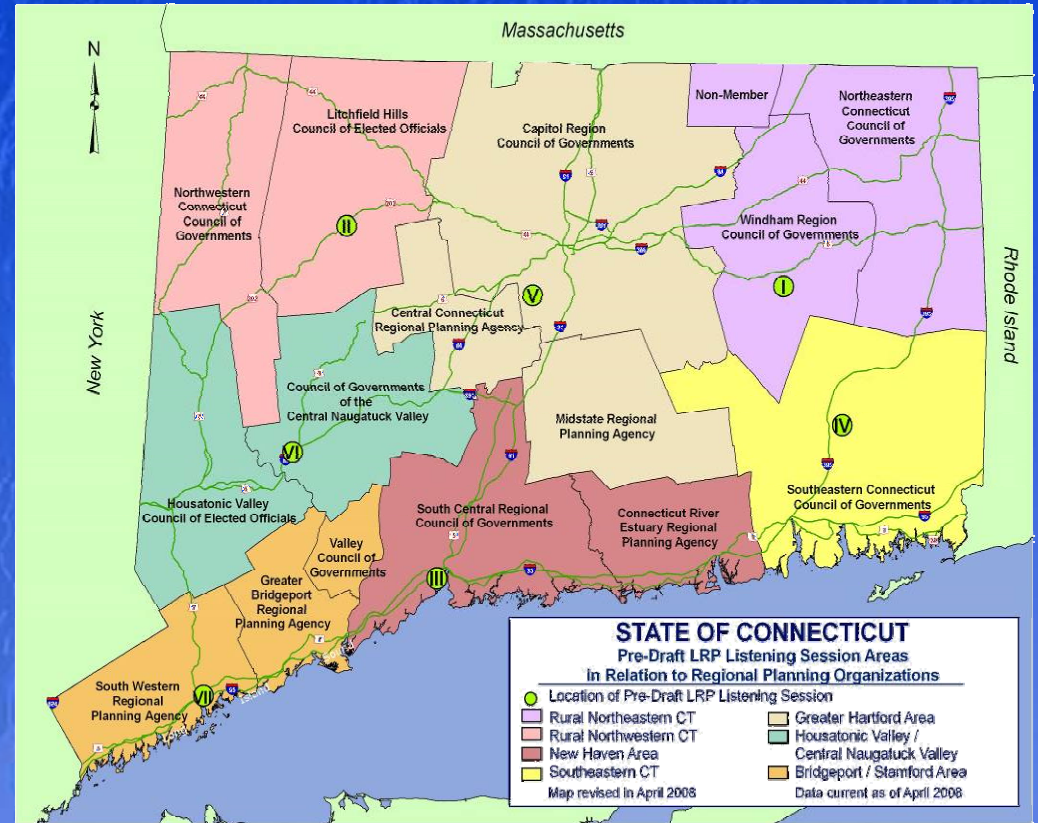
- Citizens
- Affected Public Agencies
- Reps of Users of Public Transportation
- Reps of Public Transportation Employees
- Freight Shippers
- Private Providers of Transportation
- Reps of Users of Pedestrian Walkways & Bicycle Facilities
- Reps of the Disabled
- Federally Recognized Indian Tribes
- Other Interested Parties

Draft 2009 LRP: Planning Process

Participants in the Process: Public Involvement

OPPORTUNITIES FOR PUBLIC INVOLVEMENT

- Prior to Preparation of Draft LRP
 - 7 Listening Sessions in Nov. & Dec. 2007
 - Public Comment Period from Sept. 20 – Dec. 31, 2007
 - Comments could be presented orally or in writing at any of the Listening sessions, or mailed or e-mailed to CTDOT
 - Comments received prior to January 1, 2007, were considered when preparing the Draft LRP



□ ISSUES, STRATEGIES & ACTIONS

- Statutory Responsibilities
- Mission Statement
- Influencing Factors
- Major Needs & Issues



Our Responsibilities...

*The agency shall be responsible for
all aspects of the planning, development,
maintenance and improvement
of transportation in the state.
(Section 13b-3CGS)*

Our Mission...

*to provide a safe and efficient intermodal transportation network that
improves the quality of life and promotes economic vitality for the State and the
region*

Draft 2009 LRP: Issues Strategies & Actions

Department Responsibilities

Policy & Planning

Oversees inventory of state highway data and performs travel forecasting; conducts and administers various planning studies; and prepares environmental documents, permits and various transportation plans and administers various transportation safety programs.



Aviation & Ports

Manages airport and waterway facilities in Connecticut.



Engineering & Construction

Oversees highway design, construction, and maintenance as well as highway safety programs.



Highway Operations

Oversees highway operations and highway and bridge maintenance programs and activities



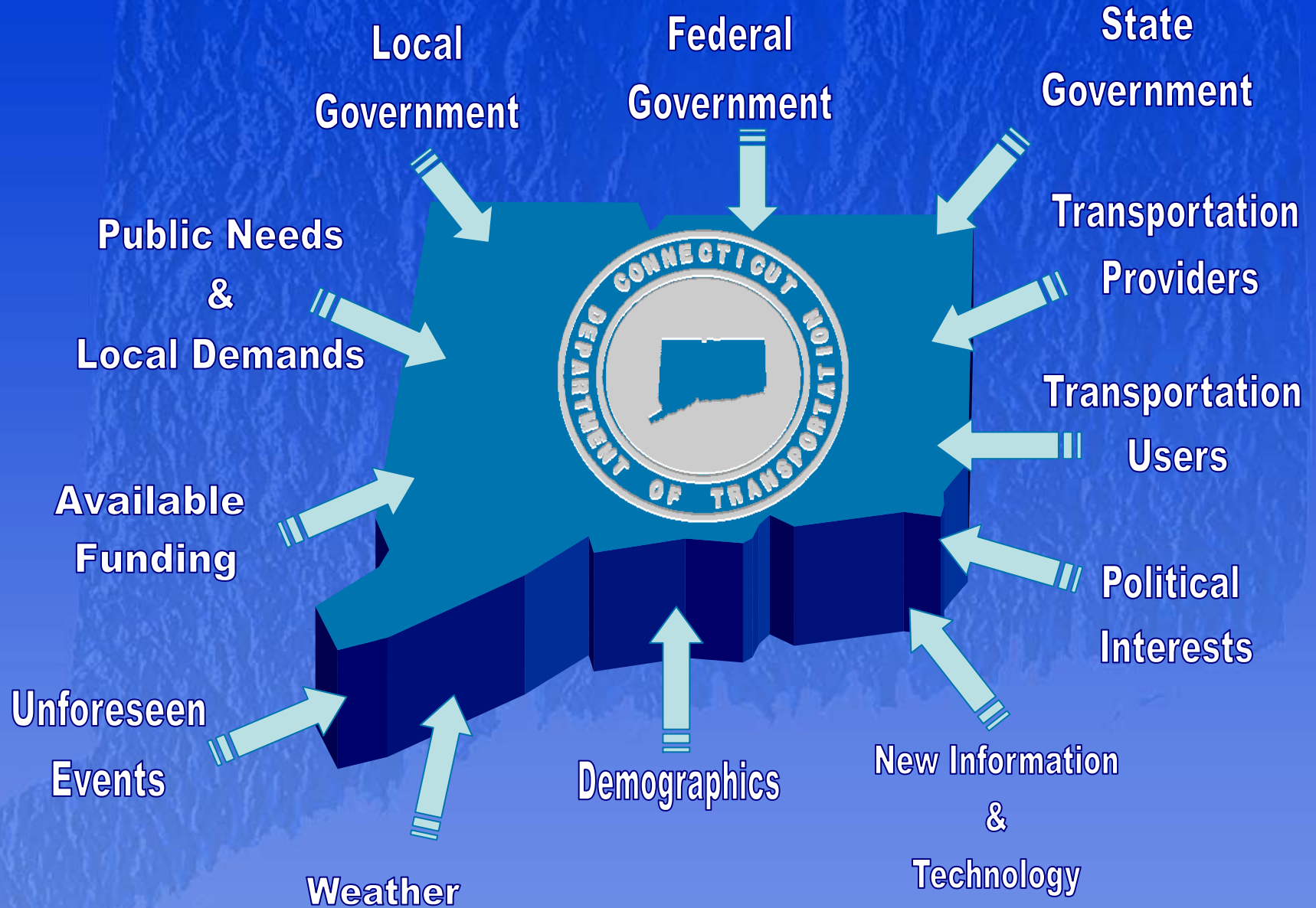
Public Transportation

Oversees rail and bus services as well as other ridesharing functions.



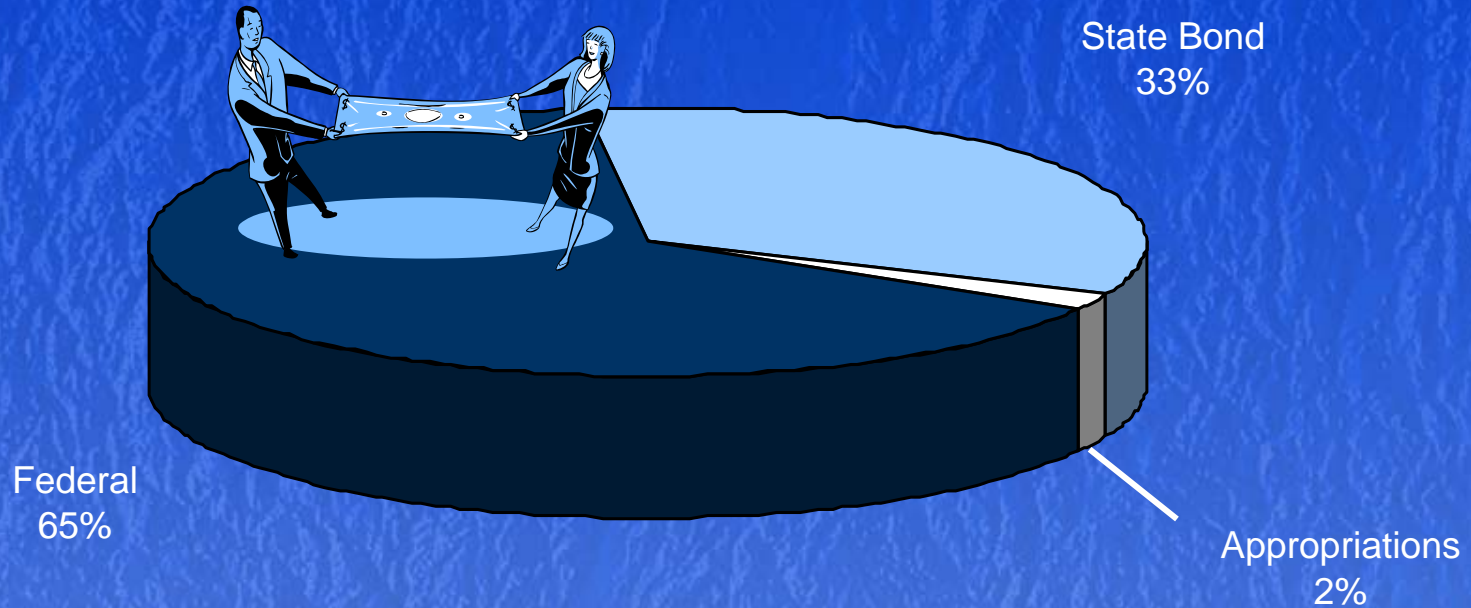
LRP Overview: Issues, Strategies & Actions

Factors that Influence Transportation in Connecticut & ConnDOT



Future Directions and Influencing Factors

Transportation Financing Capital Program



Capital Program Budget (SFY2009)
Total = \$960 Million

Source: Bureau of Finance & Administration. Data based on State Fiscal Year. These figures do not include the governor's transportation initiatives of 2005 & 2006. Graphic revised in August 2008.

Future Directions and Influencing Factors

U.S. Congress
Federal Funding Source

**VISION 100
(FFY 2004-2007)**

**SAFETEA-LU
(FFY 2004-2009)**

**Airport & Airway
Trust Fund**

**Federal Highway
Trust Fund**

**Federal Transit
Administration**

AIRPORT
IMPROVEMENT
PROGRAM

AIRPORT
FACILITIES &
EQUIPMENT
PROGRAM

HIGH PRIORITY
PROJECTS
AS DEFINED BY
FEDERAL GOV'T

HIGH
HAZARD
ELIMINATION
PROGRAM

SURFACE
TRANSPOR-
TATION
PROGRAM

BRIDGE
PROGRAMS

CONGESTION,
MITIGATION &
AIR QUALITY

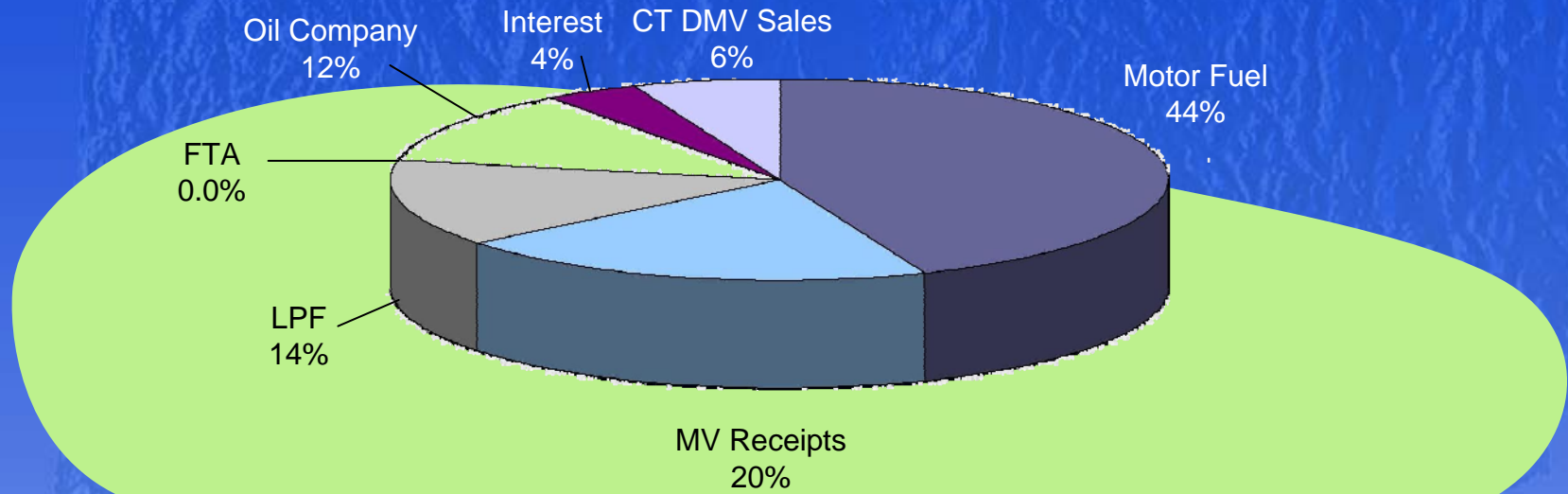
WATER
TRANSPOR-
TATION
STUDIES,
SERVICES,
& PROJECTS

INTERSTATE
MAINTENANCE
NAT'L
HIGHWAY
SYSTEM



Estimated SFY2009 Special Transportation Fund

SFY 2009 Estimated Revenue = \$1,157 Million



Source: Bureau of Finance & Administration. Data based on State Fiscal Year. Graphic revised in June 2008.

LRP Overview: Issues, Strategies & Actions

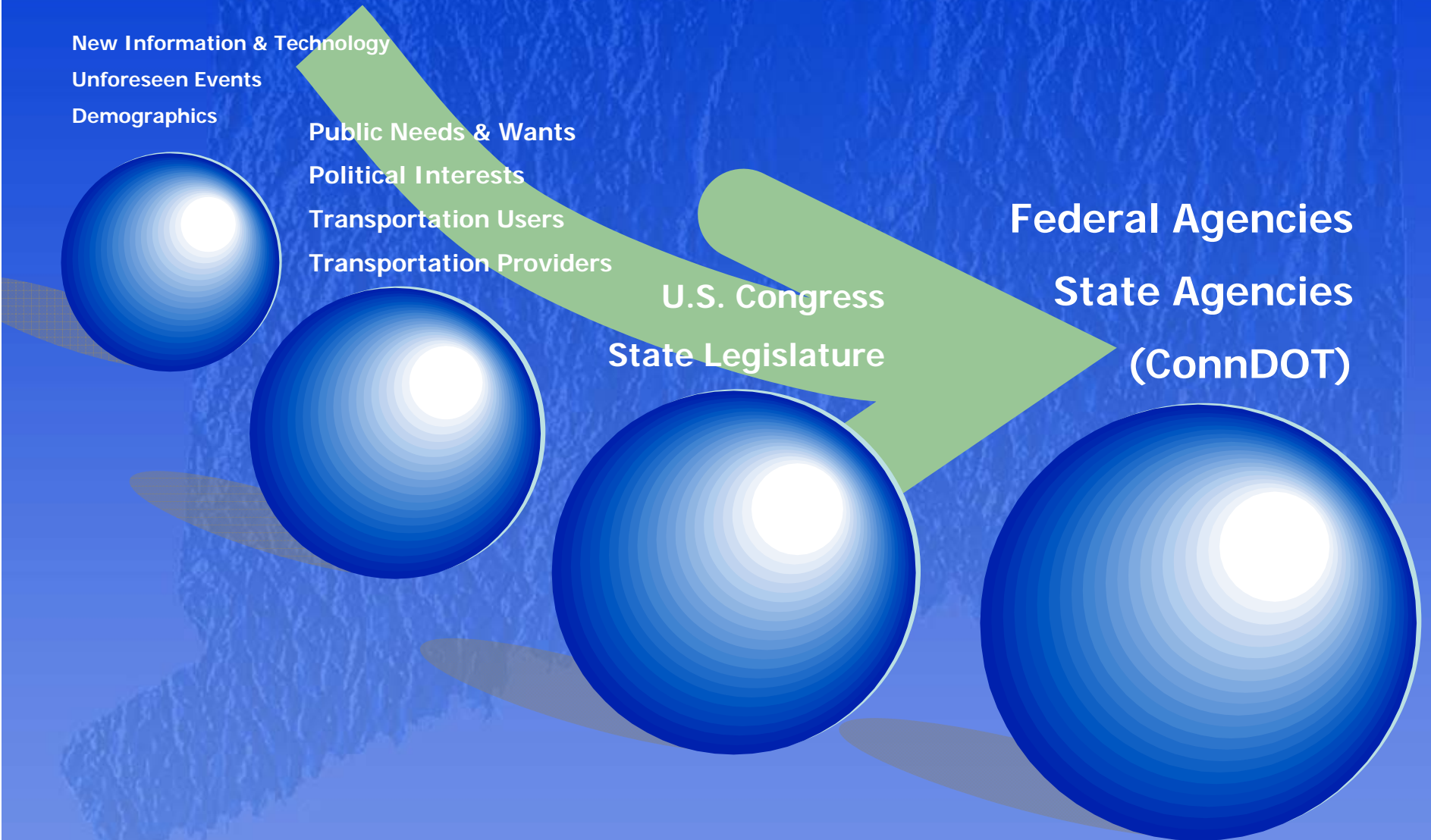
Relationships of Influencing Factors: Spheres of Influence

New Information & Technology
Unforeseen Events
Demographics

Public Needs & Wants
Political Interests
Transportation Users
Transportation Providers

U.S. Congress
State Legislature

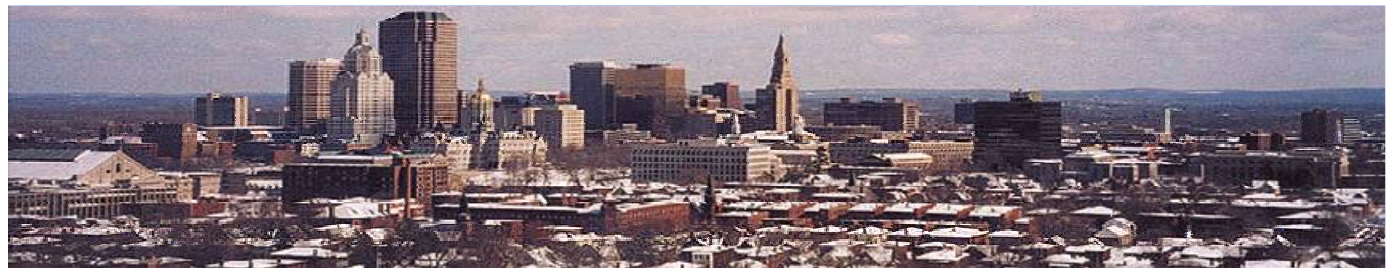
Federal Agencies
State Agencies
(ConnDOT)



Draft 2009 LRP: Issues, Strategies & Actions

Key Issues

Land Use



Environment

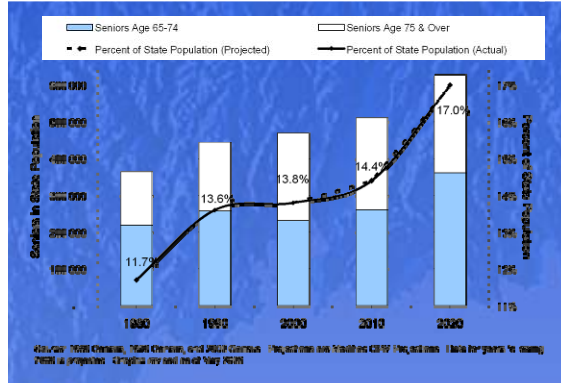


Travel Delays

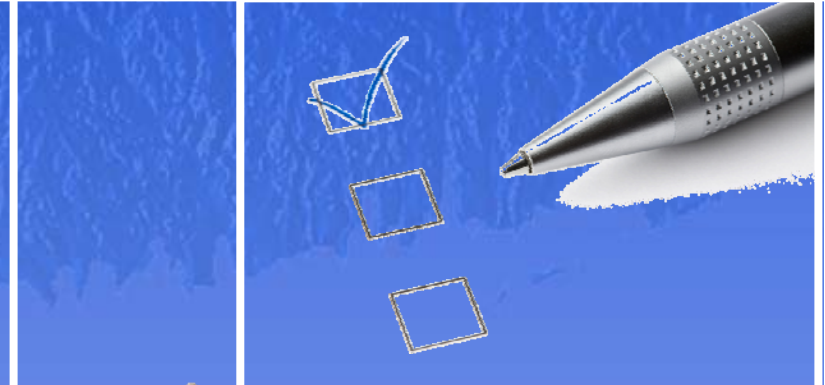


Safety & Security

Aging Population



Funding



Priorities



□ Key Issues & Recommendations

- Increase Funding
- Improve mobility and quality of life and encourage economic development while increasing options available for transit and ridesharing
- Encourage walking and biking
- Increase bus service and frequency while improving bus shelters, clearly marked and consistent use and design of stop signs
- Expand elderly and para-transit service

□ Common Key Issues & Recommendations

- Focus new growth in already developed areas
- Improve interconnectivity between modes and public transportation links between growth centers
- Preserve the existing system
- Provide improvements to link these investments with growth centers and other transportation modes to
- Provide better fluidity within regions and the State as a whole

- Connecticut Statewide Airport System Plan (June 2006)
- Connecticut Public Transportation Commission's Annual Report (2007)
- Transit for Connecticut's *Bus Transit Analysis Needs Analysis*
- Connecticut Rail Commuter Council's Annual Report (2008)
- Connecticut Maritime Commission's Annual Report (2008)
- Transit for Connecticut's *"Responsible Growth Task Force Report 2008"*

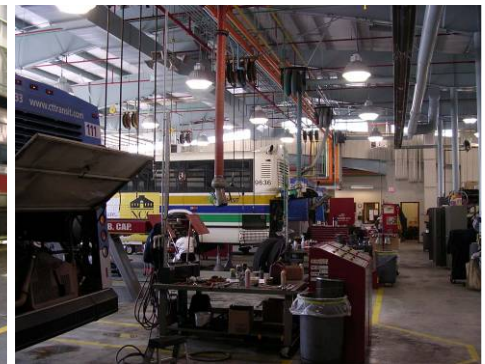
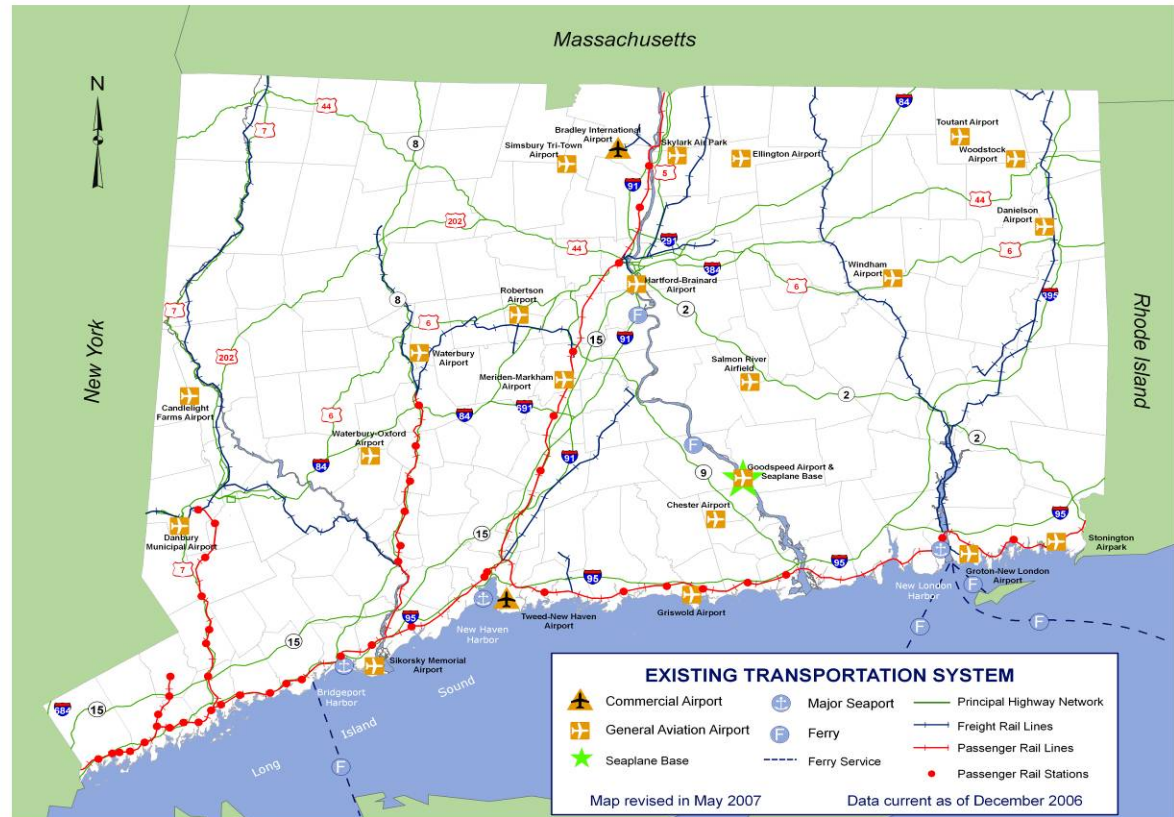
- ◆ Preservation – Maintain the Existing System in a State of Good Repair
- ◆ System Modifications – Safety & Modernization
- ◆ System Productivity – Efficiency
- ◆ Economic & Environmental Impact – Quality of Life
- ◆ Strategic Capacity Improvements

Issues, Strategies & Actions

Preserving & Maintain the Existing Transportation System

Federal Mandate:

Emphasize the preservation of the existing transportation system



Issues, Strategies & Actions

Managing & Operating the Transportation System

Federal Mandate:

Promote efficient system management & operation



Federal Mandate:

Increase the safety of the transportation system for users of motorized and non-motorized modes of transportation



**SLOW DOWN FOR
WORK ZONES!** 



Federal Mandate:

Increase the security of the transportation system for users of motorized and non-motorized modes

See something? Say something.

TRANSITWATCH

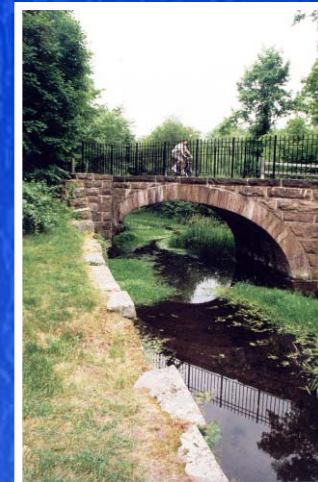
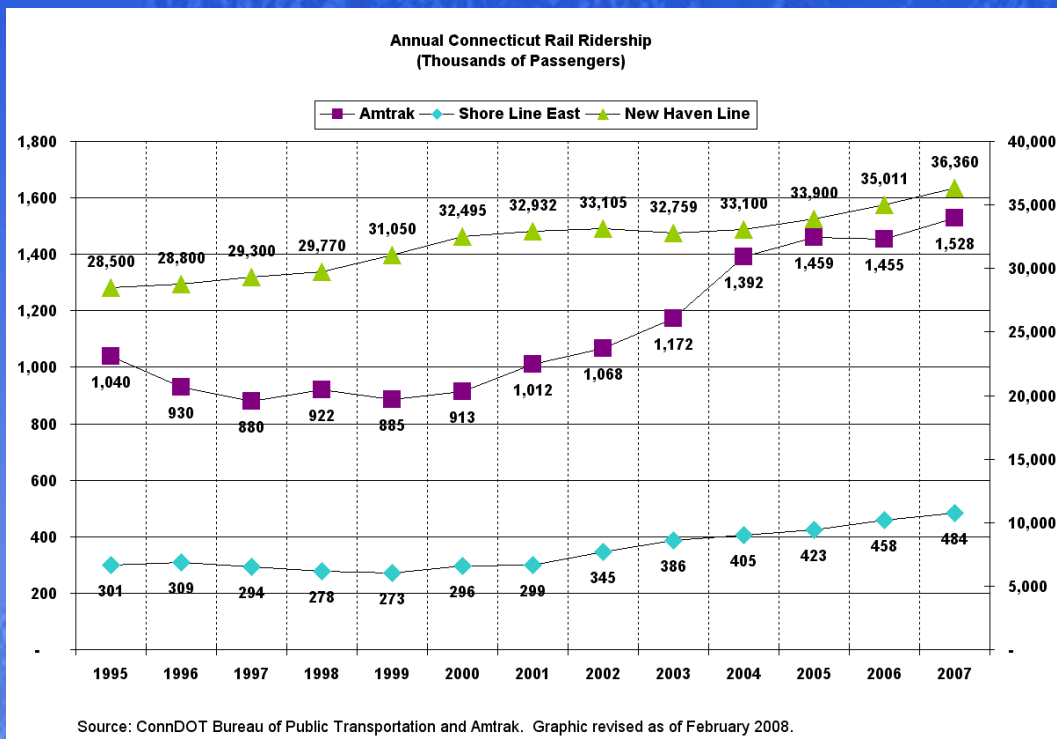


Issues, Strategies & Actions

Reduce Energy Use & Negative Impacts to Quality of Life & the Environment

Federal Mandate:

Protect and enhance the environment, promote energy conservation, improve quality of life, and promote consistency between transportation improvements and state and local planned growth and economic development patterns

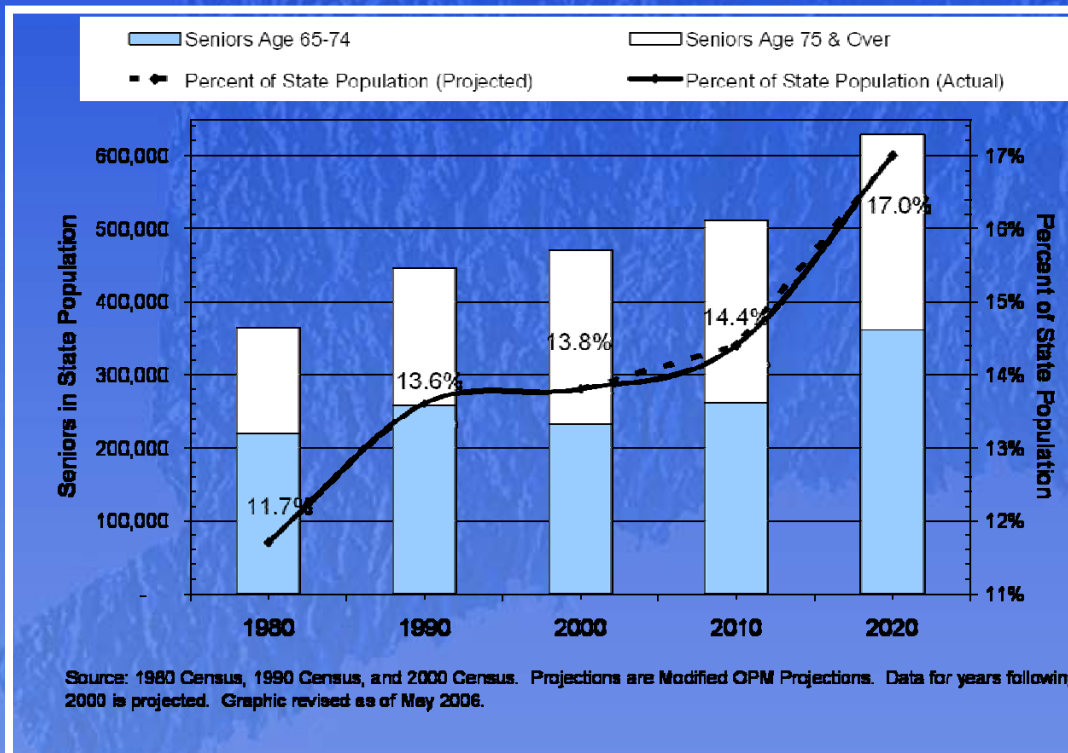


Issues, Strategies & Actions

Improving Accessibility & Mobility within the Transportation System

Federal Mandate:

Increase the accessibility and mobility of people and freight

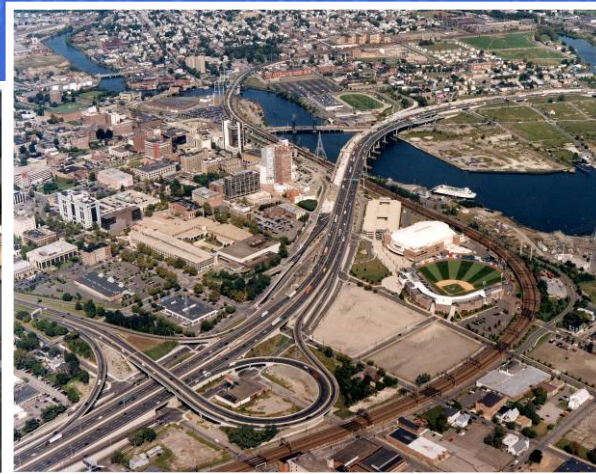
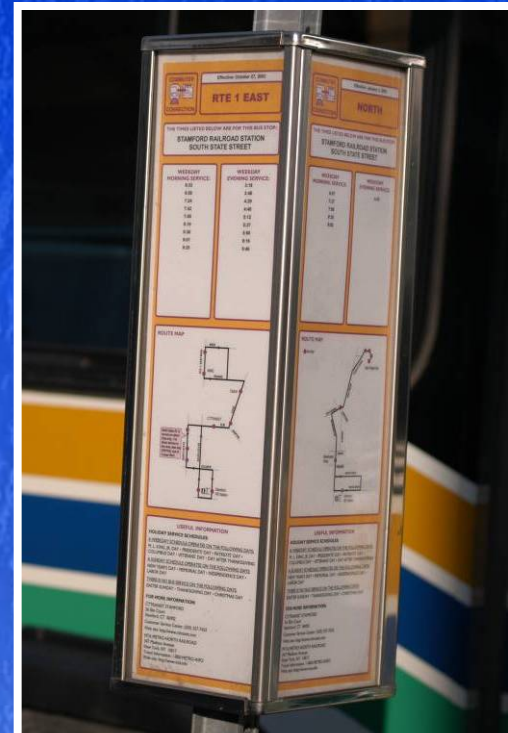


Issues, Strategies & Actions

Integrating & Connect the Transportation System

Federal Mandate:

Enhance the integration & the connectivity of the transportation system, across and between modes throughout the state, for people and freight

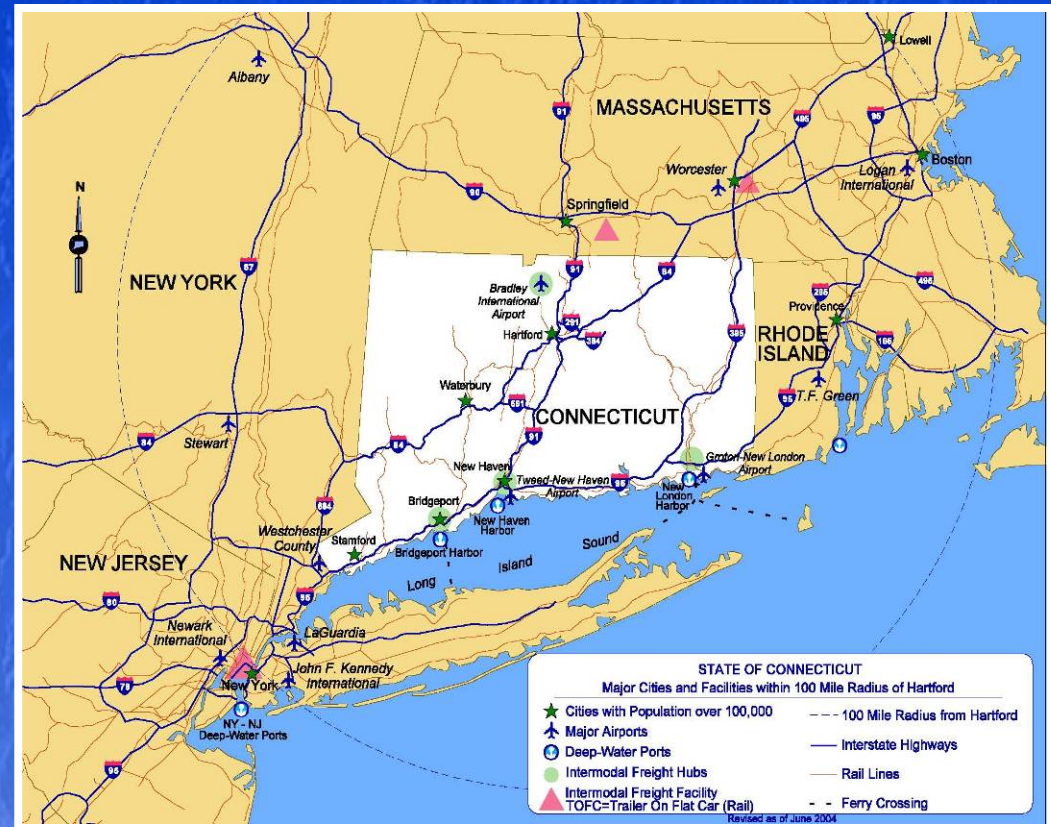


Issues, Strategies & Actions

Promoting Economic Vitality with the Aid of the Transportation System

Federal Mandate:

Support the economic vitality of the United States, the states, nonmetropolitan areas, and metropolitan areas, especially by enabling global competitiveness, productivity and efficiency



**Draft 2009 LRP:
New Directions & Areas of
Emphasis**

Outline of Discussion

□ New Directions & Areas of Emphasis



**Draft 2009 LRP:
New Directions & Areas of
Emphasis**

Paradigm Shift

Management of its transportation system

- Condition of infrastructure
- Waning resources to pay for much needed repairs and improvements
- Altering character and preferences of the traveling public

Broader focus on mobility needs

- Importance of land use planning
- Integration of and connectivity among modes of transportation
- Greater transparency
- New partnerships

LRP Overview

2004 LRP vs. Draft 2009 LRP: Key Differences

□ 2009 LRP:

- Includes a 5-point Strategic Investment Plan
- Emphasizes greater interagency and interstate coordination
- More emphasis on coordination of land use planning and transportation
- Greater emphasis on addressing the needs of pedestrians and cyclists
- Stresses accountability and transparency and incorporates performance measures

Draft LRP (Published in Fall 2009)

➤ 4 Public Information Meetings

- March 31, 2009, at ConnDOT Admin. Building, Conference Room A in Newington (1-3 p.m.)
- March 31, 2009, at Southeastern Connecticut Council of Governments in in Norwich (7 – 9 p.m.)
- April 1, 2009, at Chase Municipal Building, 1st Floor Conference Room in Waterbury (7 – 9 p.m.)
- April 2, 2009, at Bridgeport City Hall, Common Council Chambers in Bridgeport (7 – 9 p.m.)

➤ 45-Day Public Review & Comment Period runs from March 17, 2009 – April 30, 2009

➤ Orally present comments at a meeting, or mail or e-mail your comments by April 30, 2009

E-mail comments to: roxane.fromson@po.state.ct.us

For your convenience, the Input, Ideas and Comments sheet is also available on the Department's web site with other related LRP materials as a user-friendly form with a button for submitting comments by e-mail.

Mailing address: Roxane Fromson, Transportation Supervising Planner, Conn. Dept. of
Transportation, Bureau of Policy and Planning, P.O. Box 317546,
Newington, CT 06131-7546

Draft document is available for review in selected locations and on the Department's web site at <http://www.ct.gov/dot> under "Publications"

Final LRP (Anticipated Publication Date: June 2009)

- Document will be made available on Department's web site, at selected locations & upon request.

Opportunities for Public Input

Department's Web Site and Contact Information

The screenshot shows the homepage of the Connecticut Department of Transportation website. At the top left is the 'ct.gov State of Connecticut' logo. To the right is a search bar with the text 'Search:' and a 'GO' button. Below the search bar is a banner image of a highway construction site with yellow excavators and trucks. On the left side of the banner is the Connecticut Department of Transportation seal and the text 'Department of Transportation'. Below the banner is a navigation menu with links: 'Home', 'About Us', 'Press Room', 'Contact Us', 'Programs and Services', 'Publications', 'Doing Business with ConnDOT', and 'Permits & Liscence Info'. Below the navigation menu is a large image of the Department of Transportation building with the text 'Building a 21st Century Transportation Network...'. To the right of the building image are three links: 'Travel Resources', 'Traffic Cameras', and 'Traffic Incidents'. At the bottom of the building image is a sign that reads 'DEPARTMENT OF TRANSPORTATION 2800 BEERIN TURNPIKE'.

<http://www.ct.gov/dot>

Navigate as follows:

- Click on "Publications" (from banner at top of page)
- Click on "Plans, Projects, Studies"
- Click on "ConnDOT Plans"
- Click on "Long-Range Transportation Plan"

