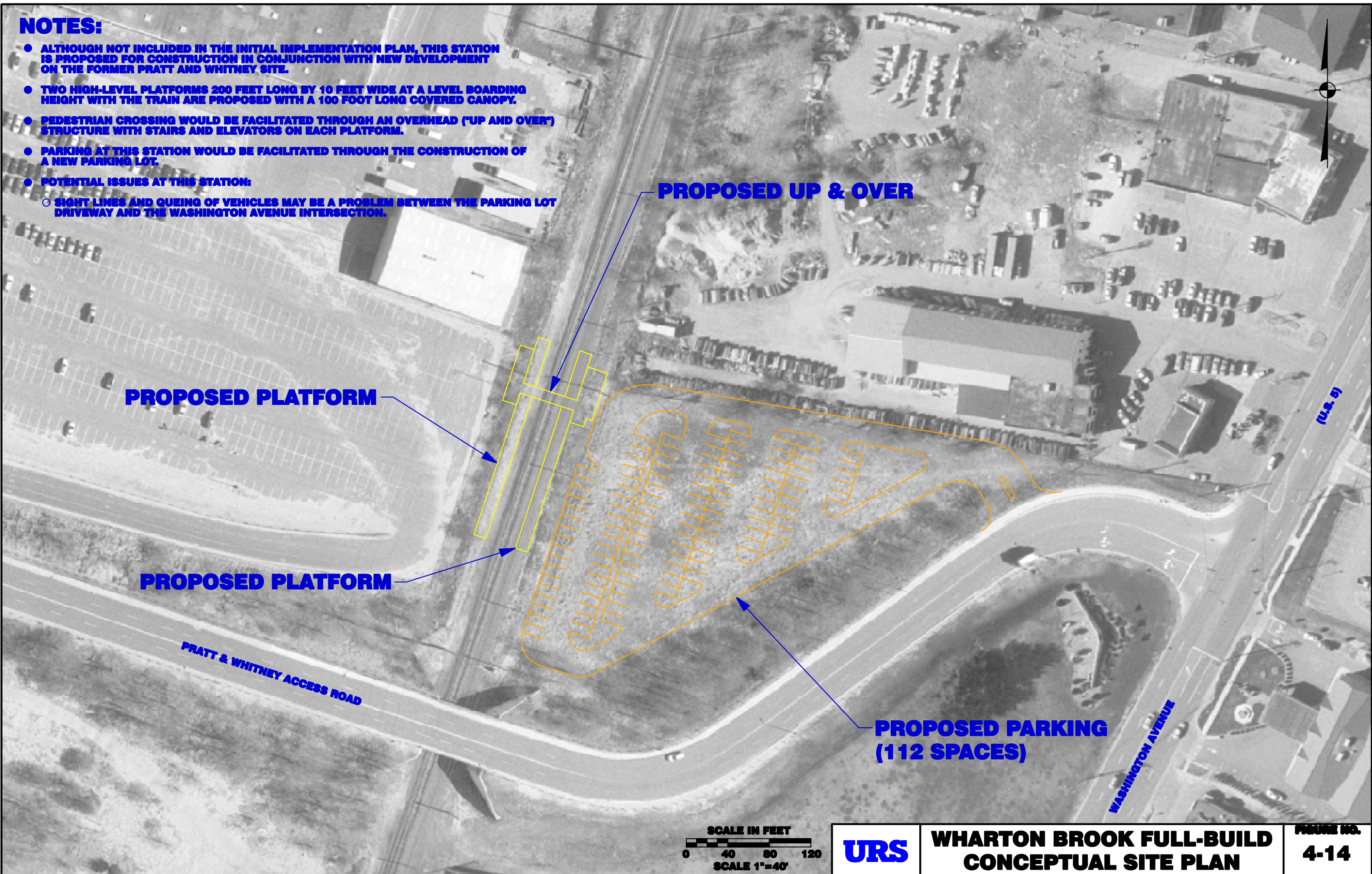


NOTES:

- ALTHOUGH NOT INCLUDED IN THE INITIAL IMPLEMENTATION PLAN, THIS STATION IS PROPOSED FOR CONSTRUCTION IN CONJUNCTION WITH NEW DEVELOPMENT ON THE FORMER PRATT AND WHITNEY SITE.
- TWO HIGH-LEVEL PLATFORMS 200 FEET LONG BY 10 FEET WIDE AT A LEVEL BOARDING HEIGHT WITH THE TRAIN ARE PROPOSED WITH A 100 FOOT LONG COVERED CANOPY.
- PEDESTRIAN CROSSING WOULD BE FACILITATED THROUGH AN OVERHEAD ("UP AND OVER") STRUCTURE WITH STAIRS AND ELEVATORS ON EACH PLATFORM.
- PARKING AT THIS STATION WOULD BE FACILITATED THROUGH THE CONSTRUCTION OF A NEW PARKING LOT.
- POTENTIAL ISSUES AT THIS STATION:
 - SIGHT LINES AND QUEING OF VEHICLES MAY BE A PROBLEM BETWEEN THE PARKING LOT DRIVEWAY AND THE WASHINGTON AVENUE INTERSECTION.



PROPOSED PLATFORM

PROPOSED PLATFORM

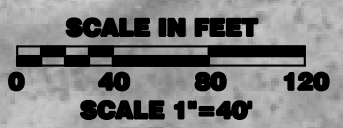
PROPOSED UP & OVER

**PROPOSED PARKING
(112 SPACES)**

PRATT & WHITNEY ACCESS ROAD

WASHINGTON AVENUE

(U.S. 5)



**WHARTON BROOK FULL-BUILD
CONCEPTUAL SITE PLAN**

**FIGURE NO.
4-14**