

POTENTIAL MULTI-MODAL CENTER

PROPOSED PLATFORMS

PROPOSED UP & OVER

EXISTING RAILROAD STATION

EXISTING PLATFORM

PROPOSED PARKING (218 SPACES)

NOTES:

- AT THIS EXISTING AMTRAK STATION, NEW PLATFORMS WOULD BE CONSTRUCTED FOR THE INITIAL COMMUTER RAIL IMPLEMENTATION PLAN. IT IS ANTICIPATED THAT ALL TRAINS ON THE LINE, INCLUDING AMTRAK AND COMMUTER RAIL WOULD UTILIZE THE NEW PLATFORMS.
- TWO HIGH-LEVEL PLATFORMS 200 FEET LONG BY 10 FEET WIDE AT A LEVEL BOARDING HEIGHT WITH THE TRAIN ARE PROPOSED WITH A 100 FOOT LONG COVERED CANOPY.
- PEDESTRIAN CROSSING WOULD BE PROVIDED THROUGH AN OVERHEAD ("UP AND OVER") STRUCTURE WITH STAIRS AND ELEVATORS ON EACH PLATFORM.
- PARKING AT THIS STATION WOULD BE TEMPORARY PENDING THE FUTURE DEVELOPMENT OF THE CITY OWNED SITE ON WHICH IT SHOWN. PERMANENT PARKING WOULD BE IN THE FORM OF A SHARED PARKING DECK AS PART OF THE MERIDEN CITY CENTER INITIATIVE PLAN.
- THE EXISTING AMTRAK STATION WOULD BE REPLACED WITH A FUTURE MULTI-MODAL CENTER AT THE FORMER POST OFFICE LOCATION ONCE FUNDING FOR THE MULTI-MODAL CENTER IS SECURED.

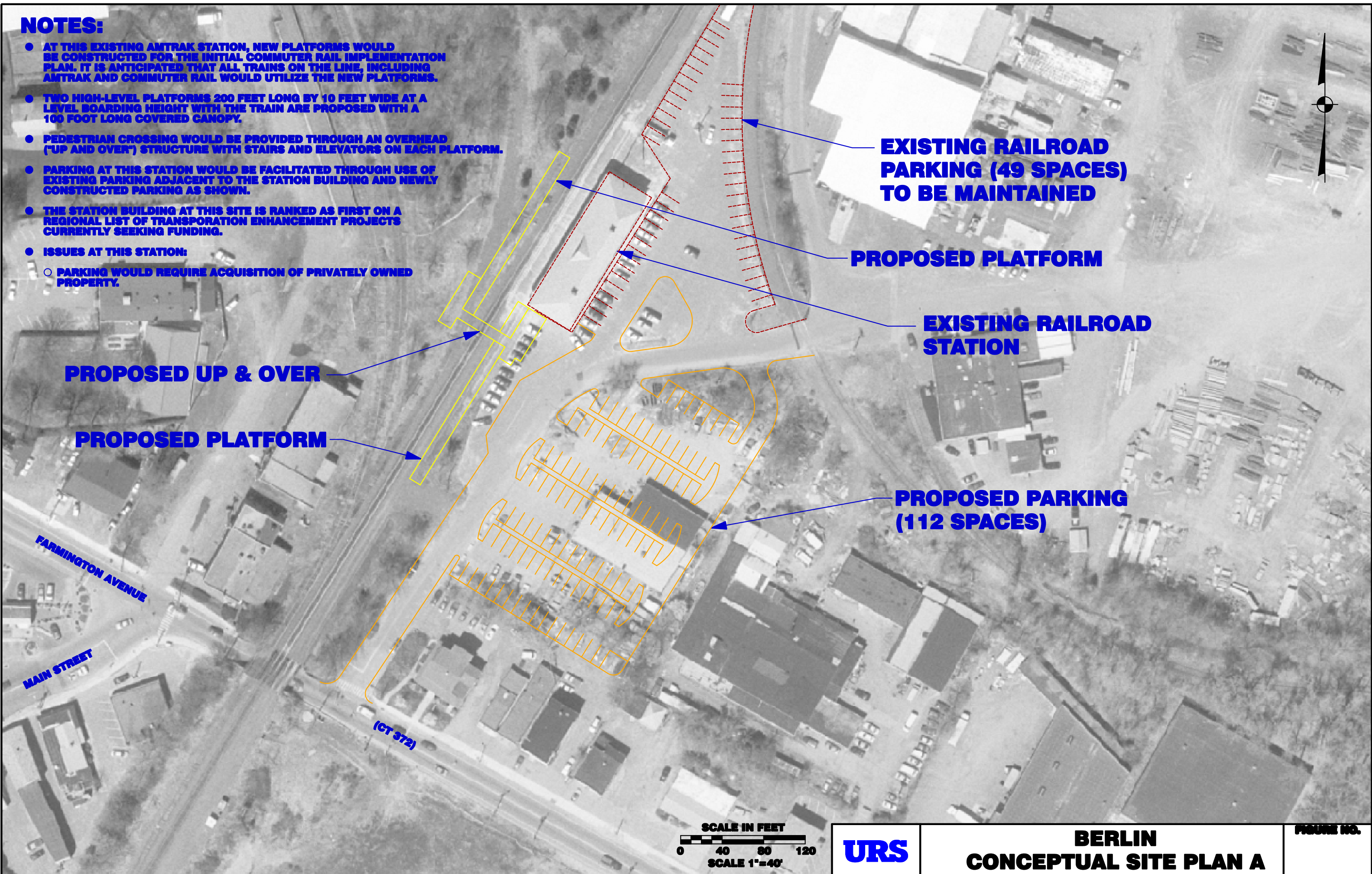


**MERIDEN
CONCEPTUAL SITE PLAN**

FIGURE NO.

NOTES:

- AT THIS EXISTING AMTRAK STATION, NEW PLATFORMS WOULD BE CONSTRUCTED FOR THE INITIAL COMMUTER RAIL IMPLEMENTATION PLAN. IT IS ANTICIPATED THAT ALL TRAINS ON THE LINE, INCLUDING AMTRAK AND COMMUTER RAIL WOULD UTILIZE THE NEW PLATFORMS.
- TWO HIGH-LEVEL PLATFORMS 200 FEET LONG BY 10 FEET WIDE AT A LEVEL BOARDING HEIGHT WITH THE TRAIN ARE PROPOSED WITH A 100 FOOT LONG COVERED CANOPY.
- PEDESTRIAN CROSSING WOULD BE PROVIDED THROUGH AN OVERHEAD ("UP AND OVER") STRUCTURE WITH STAIRS AND ELEVATORS ON EACH PLATFORM.
- PARKING AT THIS STATION WOULD BE FACILITATED THROUGH USE OF EXISTING PARKING ADJACENT TO THE STATION BUILDING AND NEWLY CONSTRUCTED PARKING AS SHOWN.
- THE STATION BUILDING AT THIS SITE IS RANKED AS FIRST ON A REGIONAL LIST OF TRANSPORTATION ENHANCEMENT PROJECTS CURRENTLY SEEKING FUNDING.
- ISSUES AT THIS STATION:
 - PARKING WOULD REQUIRE ACQUISITION OF PRIVATELY OWNED PROPERTY.



**EXISTING RAILROAD
PARKING (49 SPACES)
TO BE MAINTAINED**

PROPOSED PLATFORM

**EXISTING RAILROAD
STATION**

PROPOSED UP & OVER

PROPOSED PLATFORM

**PROPOSED PARKING
(112 SPACES)**

FARMINGTON AVENUE

MAIN STREET

(CT 372)

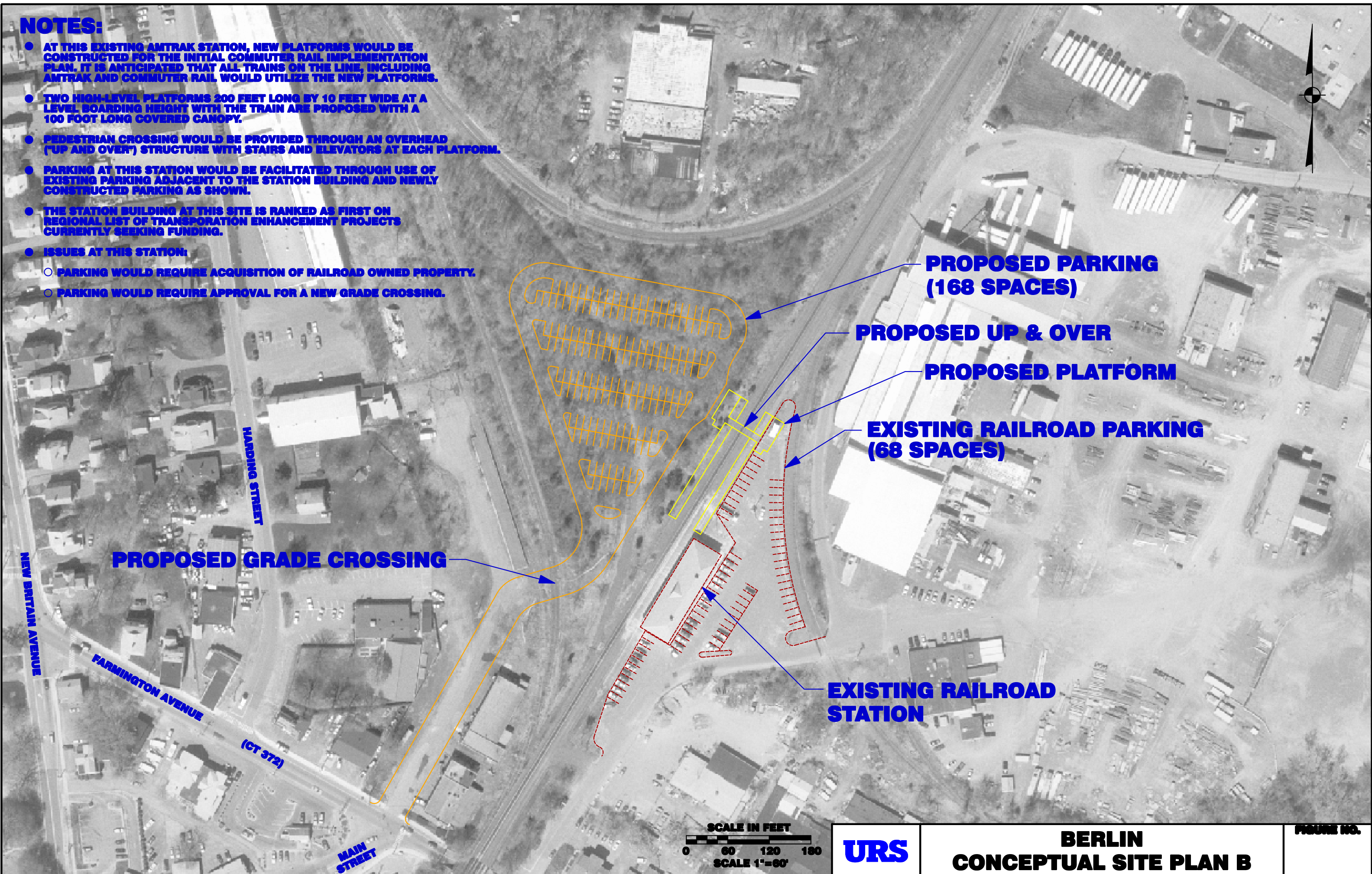


**BERLIN
CONCEPTUAL SITE PLAN A**

FIGURE NO.

NOTES:

- AT THIS EXISTING AMTRAK STATION, NEW PLATFORMS WOULD BE CONSTRUCTED FOR THE INITIAL COMMUTER RAIL IMPLEMENTATION PLAN. IT IS ANTICIPATED THAT ALL TRAINS ON THE LINE, INCLUDING AMTRAK AND COMMUTER RAIL WOULD UTILIZE THE NEW PLATFORMS.
- TWO HIGH-LEVEL PLATFORMS 200 FEET LONG BY 10 FEET WIDE AT A LEVEL BOARDING HEIGHT WITH THE TRAIN ARE PROPOSED WITH A 100 FOOT LONG COVERED CANOPY.
- PEDESTRIAN CROSSING WOULD BE PROVIDED THROUGH AN OVERHEAD ("UP AND OVER") STRUCTURE WITH STAIRS AND ELEVATORS AT EACH PLATFORM.
- PARKING AT THIS STATION WOULD BE FACILITATED THROUGH USE OF EXISTING PARKING ADJACENT TO THE STATION BUILDING AND NEWLY CONSTRUCTED PARKING AS SHOWN.
- THE STATION BUILDING AT THIS SITE IS RANKED AS FIRST ON REGIONAL LIST OF TRANSPORTATION ENHANCEMENT PROJECTS CURRENTLY SEEKING FUNDING.
- ISSUES AT THIS STATION:
 - PARKING WOULD REQUIRE ACQUISITION OF RAILROAD OWNED PROPERTY.
 - PARKING WOULD REQUIRE APPROVAL FOR A NEW GRADE CROSSING.



**BERLIN
CONCEPTUAL SITE PLAN B**

FIGURE NO.