

**NOTES:**

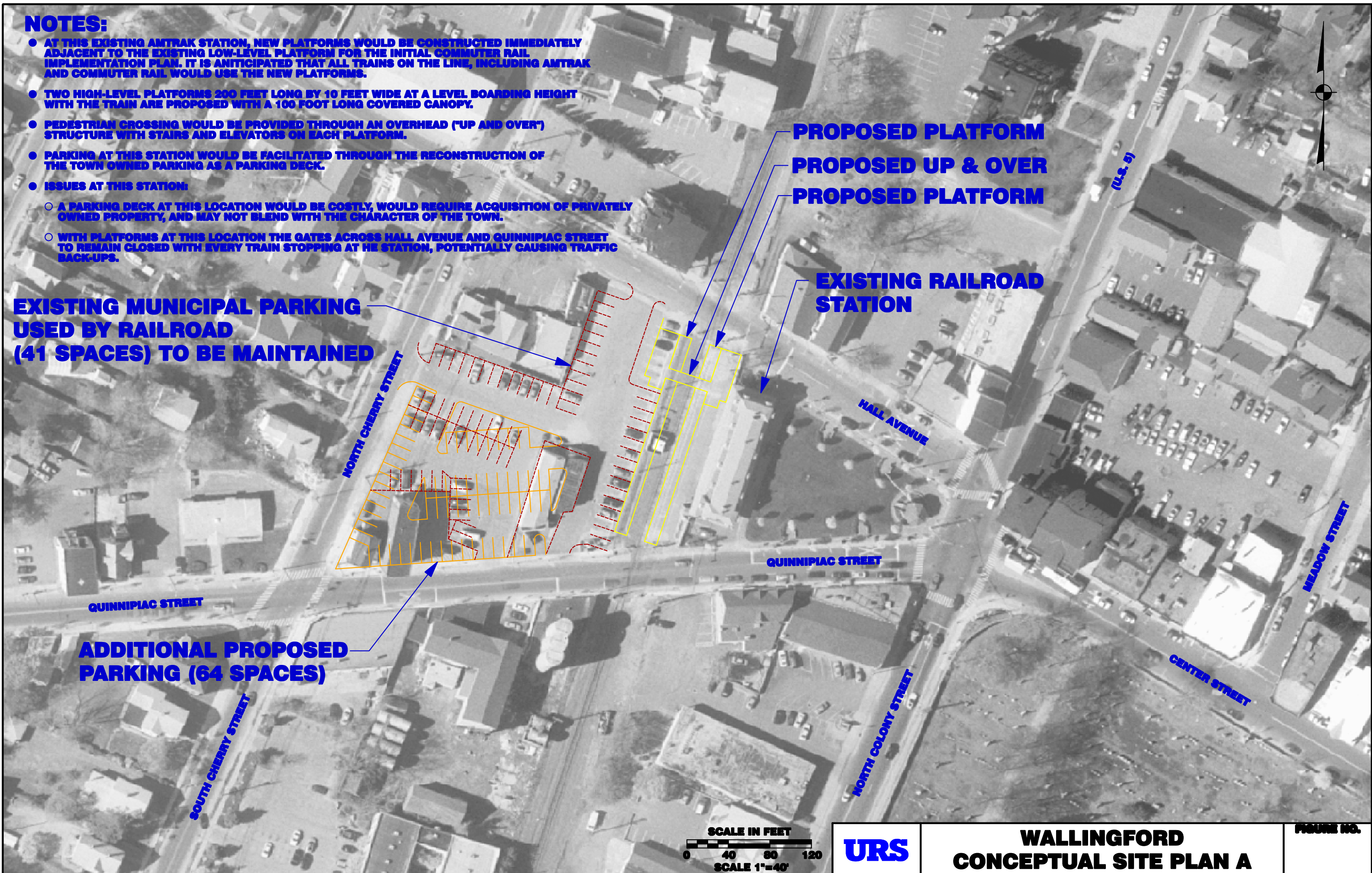
- AT THIS EXISTING AMTRAK STATION, NEW PLATFORMS WOULD BE CONSTRUCTED IMMEDIATELY ADJACENT TO THE EXISTING LOW-LEVEL PLATFORM FOR THE INITIAL COMMUTER RAIL IMPLEMENTATION PLAN. IT IS ANTICIPATED THAT ALL TRAINS ON THE LINE, INCLUDING AMTRAK AND COMMUTER RAIL WOULD USE THE NEW PLATFORMS.
- TWO HIGH-LEVEL PLATFORMS 200 FEET LONG BY 10 FEET WIDE AT A LEVEL BOARDING HEIGHT WITH THE TRAIN ARE PROPOSED WITH A 100 FOOT LONG COVERED CANOPY.
- PEDESTRIAN CROSSING WOULD BE PROVIDED THROUGH AN OVERHEAD ("UP AND OVER") STRUCTURE WITH STAIRS AND ELEVATORS ON EACH PLATFORM.
- PARKING AT THIS STATION WOULD BE FACILITATED THROUGH THE RECONSTRUCTION OF THE TOWN OWNED PARKING AS A PARKING DECK.
- ISSUES AT THIS STATION:
  - A PARKING DECK AT THIS LOCATION WOULD BE COSTLY, WOULD REQUIRE ACQUISITION OF PRIVATELY OWNED PROPERTY, AND MAY NOT BLEND WITH THE CHARACTER OF THE TOWN.
  - WITH PLATFORMS AT THIS LOCATION THE GATES ACROSS HALL AVENUE AND QUINNIPIAC STREET TO REMAIN CLOSED WITH EVERY TRAIN STOPPING AT HE STATION, POTENTIALLY CAUSING TRAFFIC BACK-UPS.

**EXISTING MUNICIPAL PARKING  
USED BY RAILROAD  
(41 SPACES) TO BE MAINTAINED**

**ADDITIONAL PROPOSED  
PARKING (64 SPACES)**

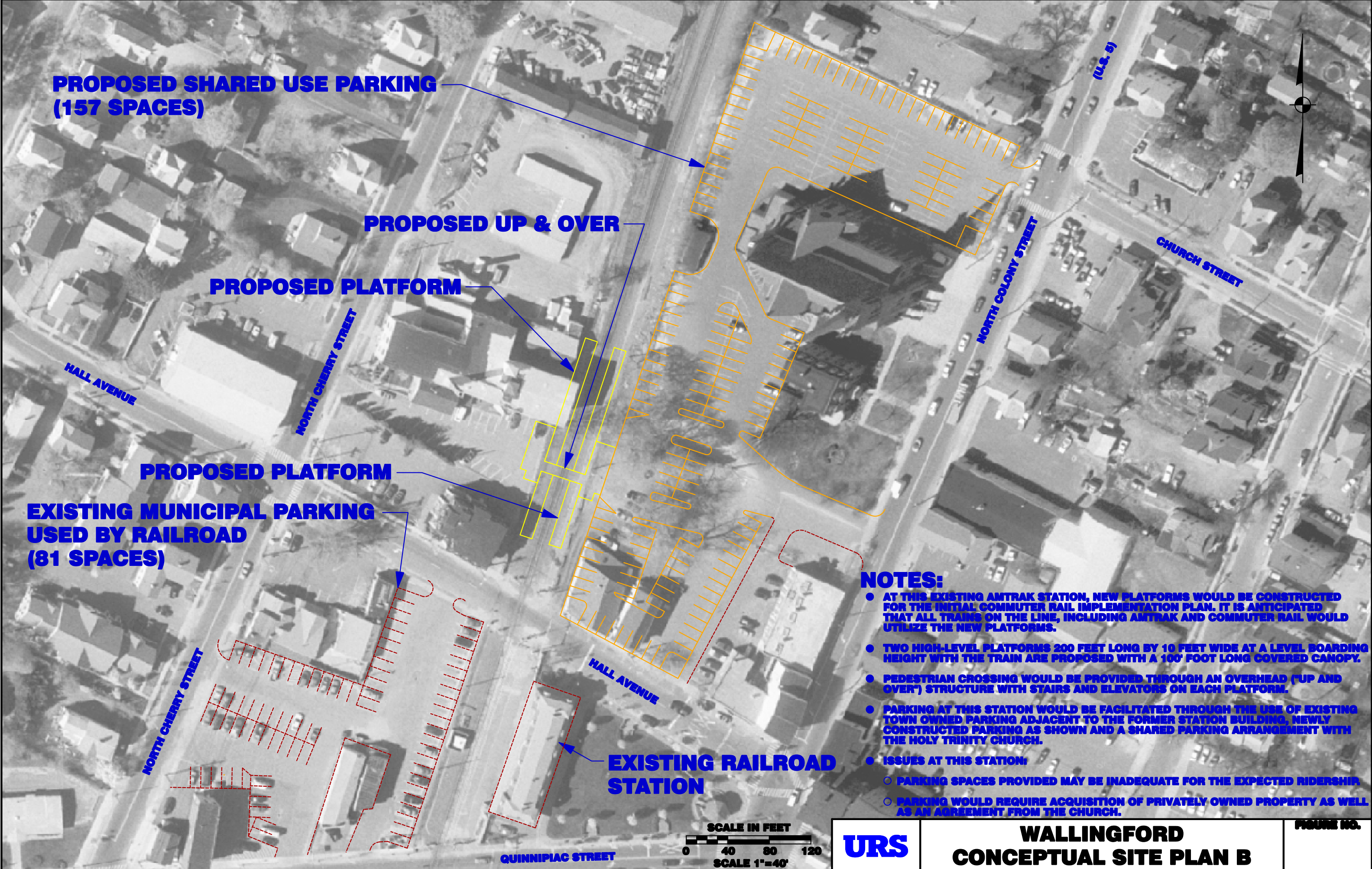
**PROPOSED PLATFORM  
PROPOSED UP & OVER  
PROPOSED PLATFORM**

**EXISTING RAILROAD  
STATION**



**WALLINGFORD  
CONCEPTUAL SITE PLAN A**

**FIGURE NO.**



**PROPOSED SHARED USE PARKING  
(157 SPACES)**

**PROPOSED UP & OVER**

**PROPOSED PLATFORM**

**PROPOSED PLATFORM**

**EXISTING MUNICIPAL PARKING  
USED BY RAILROAD  
(81 SPACES)**

**EXISTING RAILROAD  
STATION**

**NOTES:**

- AT THIS EXISTING AMTRAK STATION, NEW PLATFORMS WOULD BE CONSTRUCTED FOR THE INITIAL COMMUTER RAIL IMPLEMENTATION PLAN. IT IS ANTICIPATED THAT ALL TRAINS ON THE LINE, INCLUDING AMTRAK AND COMMUTER RAIL WOULD UTILIZE THE NEW PLATFORMS.
- TWO HIGH-LEVEL PLATFORMS 200 FEET LONG BY 10 FEET WIDE AT A LEVEL BOARDING HEIGHT WITH THE TRAIN ARE PROPOSED WITH A 100' FOOT LONG COVERED CANOPY.
- PEDESTRIAN CROSSING WOULD BE PROVIDED THROUGH AN OVERHEAD ("UP AND OVER") STRUCTURE WITH STAIRS AND ELEVATORS ON EACH PLATFORM.
- PARKING AT THIS STATION WOULD BE FACILITATED THROUGH THE USE OF EXISTING TOWN OWNED PARKING ADJACENT TO THE FORMER STATION BUILDING, NEWLY CONSTRUCTED PARKING AS SHOWN AND A SHARED PARKING ARRANGEMENT WITH THE HOLY TRINITY CHURCH.
- ISSUES AT THIS STATION:
  - PARKING SPACES PROVIDED MAY BE INADEQUATE FOR THE EXPECTED RIDERSHIP.
  - PARKING WOULD REQUIRE ACQUISITION OF PRIVATELY OWNED PROPERTY AS WELL AS AN AGREEMENT FROM THE CHURCH.



**WALLINGFORD  
CONCEPTUAL SITE PLAN B**

FIGURE NO.