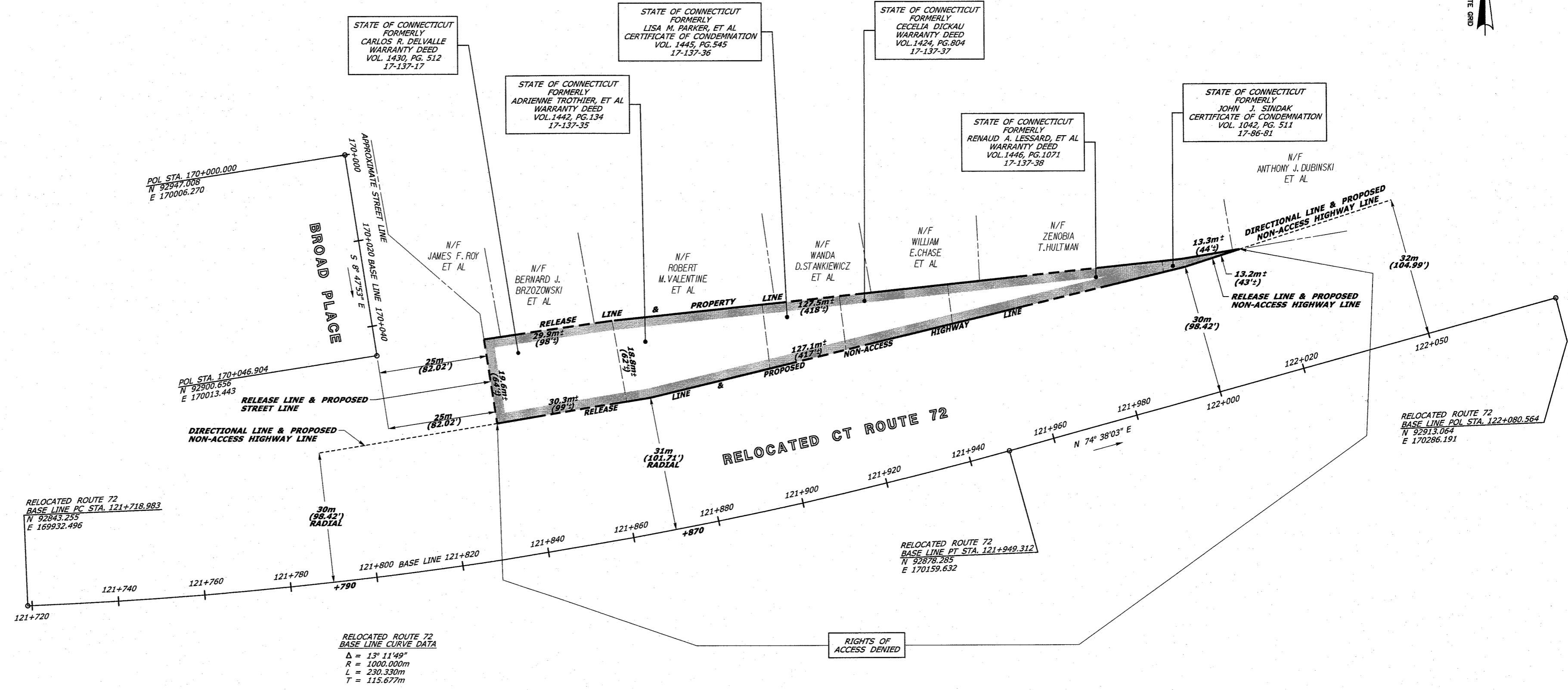


**RELEASE AREA = 2004±SQ. M.
(21,571±SQ.FT.)**



- REFERENCES:**
1. CONN. D.O.T. CONSTRUCTION PROJECT 17-137, SHEET NO. 154, 159 AND 164A, SCALE 1:500, DATED JULY 19, 2006.
 2. CONN. D.O.T. B.R.C. FILE 17-137-17
 3. CONN. D.O.T. B.R.C. FILE 17-137-35
 4. CONN. D.O.T. B.R.C. FILE 17-137-36
 5. CONN. D.O.T. B.R.C. FILE 17-137-37
 6. CONN. D.O.T. B.R.C. FILE 17-137-38
 7. CONN. D.O.T. B.R.C. FILE 17-86-81

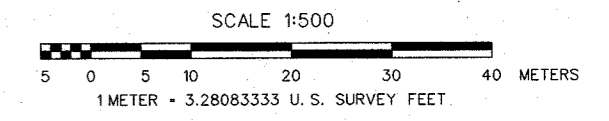
NOTES:

1. THIS COMPILATION PLAN HAS BEEN PREPARED IN ACCORDANCE WITH THE REGULATIONS OF CONNECTICUT STATE AGENCIES, SECTIONS 20-300B-1 THROUGH 20-300B-30, AND THE 'STANDARDS FOR SURVEYS AND MAPS IN THE STATE OF CONNECTICUT' AS ADOPTED BY THE CONNECTICUT ASSOCIATION OF LAND SURVEYORS, INC. ON SEPTEMBER 26, 1996. IT CONFORMS TO CLASS D ACCURACY AND IS INTENDED TO DEPICT THE LIMITS OF PROPERTY TRANSACTION AS NOTED HEREON. THIS PLAN WAS COMPILED FROM OTHER MAPS, RECORD RESEARCH, AND/OR OTHER SOURCES OF INFORMATION. IT IS NOT TO BE CONSTRUED AS HAVING BEEN NECESSARILY OBTAINED AS THE RESULT OF A FIELD SURVEY AND IS SUBJECT TO SUCH CHANGE AS AN ACCURATE FIELD SURVEY MAY DISCLOSE.
2. THE TOPOGRAPHY AND PROPERTY LINE EVIDENCE DEPICTED ARE BASED UPON THE SURVEY/MAPPING DATA AS REFERENCED. UNLESS OTHERWISE NOTED, THESE PROPERTY/BOUNDARY LINES DO NOT REPRESENT THE PROFESSIONAL OPINION OF THE UNDERSIGNED.

DRAWN BY AB
 DATE 8/2012
 CHECKED BY TJB
 DATE 8/2012



Files: Z:\Z_V8_CTDOT_NON_PROJECTS\Survey\Release\010_019\SV_CS_01T_013T_017RMA.dwg



DATE	REVISION	REQ. BY

TO MY KNOWLEDGE AND BELIEF, THIS MAP IS SUBSTANTIALLY CORRECT AS NOTED HEREON.

PLS #18824

VOID WITHOUT LIVE SIGNATURE AND EMBOSSED SEAL

TOWN NO. 17

PROJECT NO. 17-137 ROBERT J. BARON, P.L.S.

SERIAL NO. 17A TITLE MANAGER - SURVEY OPERATIONS

SHEET 1 OF 1 DATE

COMPILATION PLAN

TOWN OF BRISTOL
 MAP SHOWING LAND RELEASED TO

-

BY
THE STATE OF CONNECTICUT
 DEPARTMENT OF TRANSPORTATION

RELOCATION OF ROUTE 72

SCALE 1"=500' AUGUST 2012

THOMAS A. HARLEY, P.E.
 CHIEF ENGINEER - BUREAU OF ENGINEERING AND CONSTRUCTION