

N/F
THOMAS MEDDICK ET AL

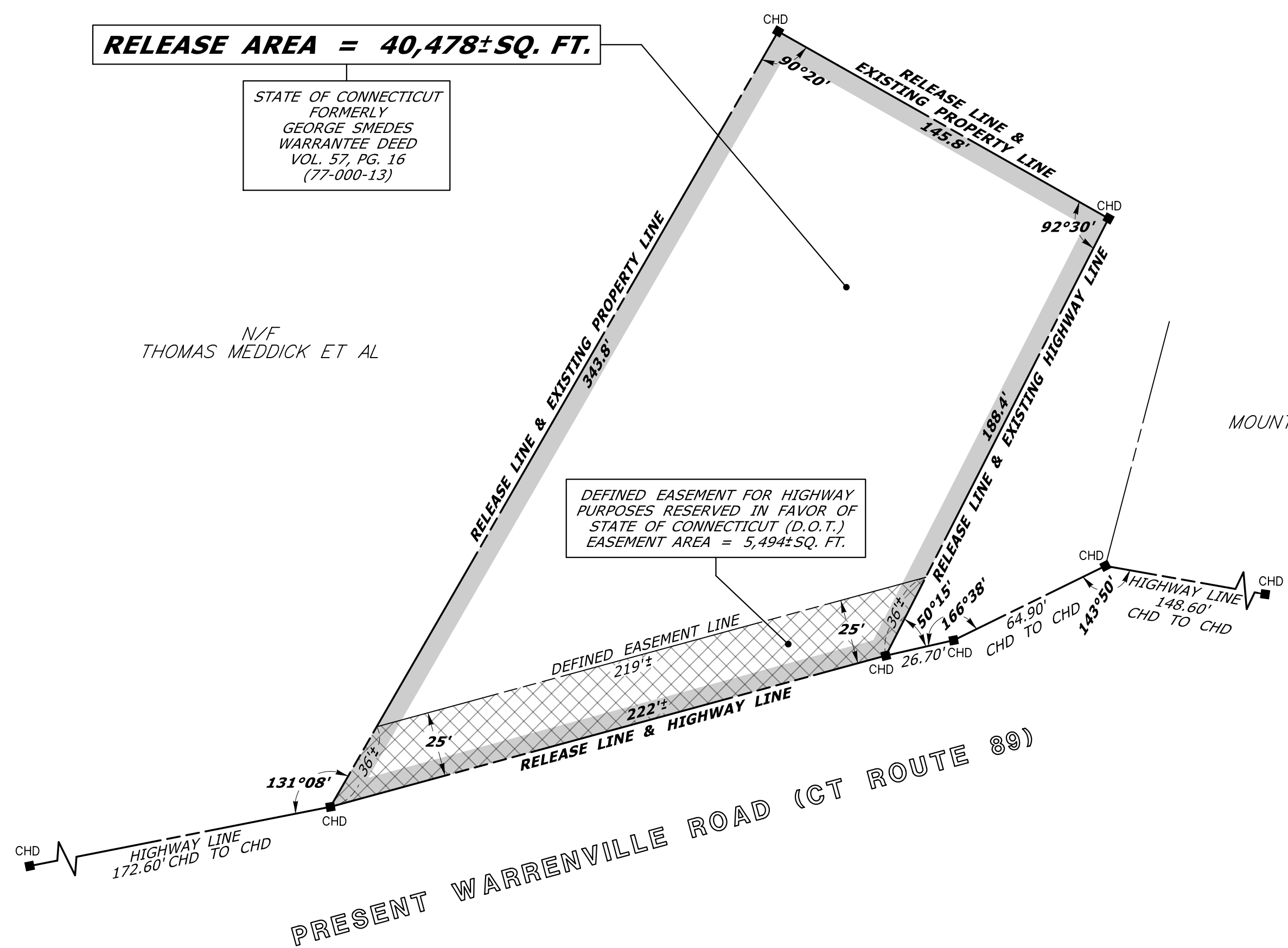
RELEASE AREA = 40,478±SQ. FT.

STATE OF CONNECTICUT
FORMERLY
GEORGE SMEDES
WARRANTEE DEED
VOL. 57, PG. 16
(77-000-13)

N/F
THOMAS MEDDICK ET AL

DEFINED EASEMENT FOR HIGHWAY
PURPOSES RESERVED IN FAVOR OF
STATE OF CONNECTICUT (D.O.T.)
EASEMENT AREA = 5,494±SQ. FT.

MOUNT HOPE CEMETERY



REFERENCES:

1. CONNDOT R.O.W. MAP NO. 77-12, SHEET 5 OF 7, SECTION NO. 2, DATED: JANUARY 31, 1935.
2. CONNDOT BRC FILE NO. 77-000-13
3. CT ECO 2019 CONNECTICUT AERIAL PHOTOGRAPHY TILE NO. 155855.ne

NOTES:

1. THIS COMPILATION PLAN HAS BEEN PREPARED IN ACCORDANCE WITH THE REGULATIONS OF CONNECTICUT STATE AGENCIES, SECTIONS 20-300B-1 THROUGH 20-300B-20, THE "MINIMUM STANDARDS OF ACCURACY, CONTENT & CERTIFICATION FOR SURVEYS AND MAPS," AS AMENDED OCTOBER 26, 2018. IT CONFORMS TO CLASS D ACCURACY AND IS INTENDED TO DEPICT THE LIMITS OF THE PROPERTY TRANSACTION AS NOTED HEREON. THIS PLAN WAS COMPILED FROM OTHER MAPS, RECORD RESEARCH AND/OR OTHER SOURCES OF INFORMATION. IT IS NOT TO BE CONSTRUED AS HAVING BEEN NECESSARILY OBTAINED AS THE RESULT OF A FIELD SURVEY AND IS SUBJECT TO SUCH CHANGE AS AN ACCURATE FIELD SURVEY MAY DISCLOSE.

2. THE TOPOGRAPHY AND PROPERTY LINE EVIDENCE DEPICTED ARE BASED UPON THE SURVEY/MAPPING DATA AS REFERENCED. UNLESS OTHERWISE NOTED, THESE PROPERTY/BOUNDARY LINES DO NOT REPRESENT THE PROFESSIONAL OPINION OF THE UNDERSIGNED.

TO MY KNOWLEDGE AND BELIEF, THIS MAP IS SUBSTANTIALLY CORRECT AS NOTED HEREON.

SCALE IN FEET

DATE	REVISION	REQ. BY
7/2023	MINOR DRAFTING REV.	MB

DRAWN BY	LAL
DATE	7/2023
CHECKED BY	TJB
DATE	7/2023

VOID WITHOUT LIVE SIGNATURE AND EMBOSSED SEAL		PLS #18823
TOWN NO.	77	
PROJECT NO.	000	CHRISTINE E. AUBREY, P.L.S.
SERIAL NO.	13A	TITLE TRANSPORTATION PRINCIPAL ENGINEER
SHEET	1 OF 1	DATE

COMPILATION PLAN

TOWN OF MANSFIELD
MAP SHOWING LAND RELEASED TO

-

BY

THE STATE OF CONNECTICUT
DEPARTMENT OF TRANSPORTATION

WARRENVILLE ROAD (CT ROUTE 89)

SCALE 1" = 40' JULY 2023

SCOTT A. HILL, P.E.
CHIEF ENGINEER - BUREAU OF ENGINEERING AND CONSTRUCTION