

SOUTH WARREN STREET  
CONSTRUCTION LINE  
CURVE DATA 7

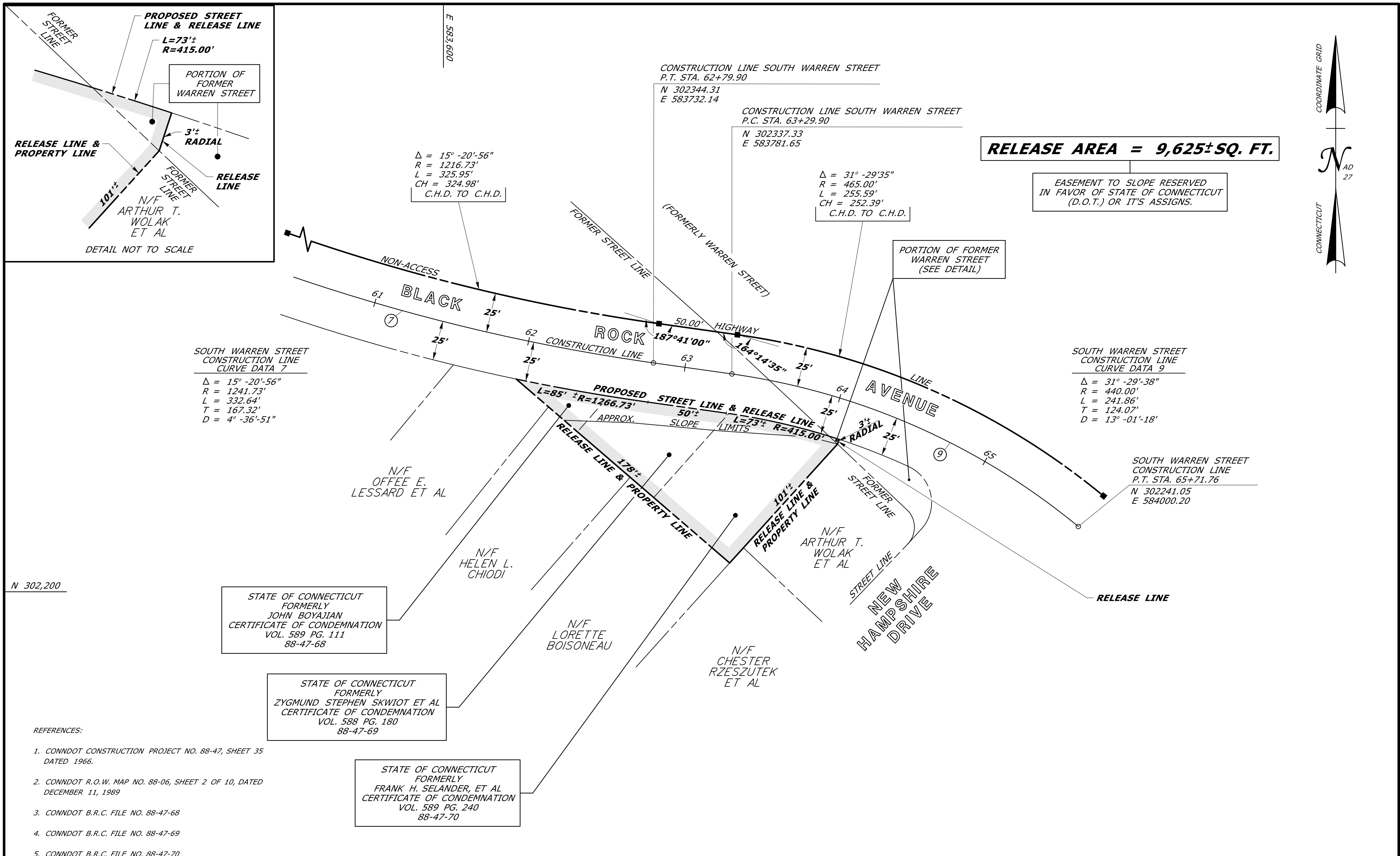
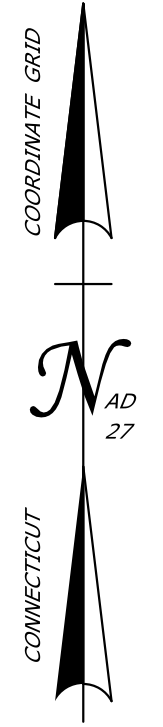
$\Delta = 15^\circ -20' -56''$   
 $R = 1241.73'$   
 $L = 332.64'$   
 $T = 167.32'$   
 $D = 4^\circ -36' -51''$

SOUTH WARREN STREET  
CONSTRUCTION LINE  
CURVE DATA 9

$\Delta = 31^\circ -29' -38''$   
 $R = 440.00'$   
 $L = 241.86'$   
 $T = 124.07'$   
 $D = 13^\circ -01' -18''$

**RELEASE AREA = 9,625± SQ. FT.**

EASEMENT TO SLOPE RESERVED  
IN FAVOR OF STATE OF CONNECTICUT  
(D.O.T.) OR IT'S ASSIGNS.



STATE OF CONNECTICUT  
FORMERLY  
JOHN BOYAJIAN  
CERTIFICATE OF CONDEMNATION  
VOL. 589 PG. 111  
88-47-68

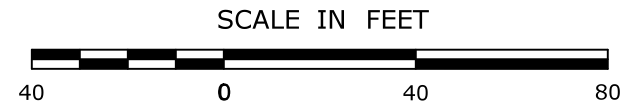
STATE OF CONNECTICUT  
FORMERLY  
ZYGmund STEPHEN SKWIOT ET AL  
CERTIFICATE OF CONDEMNATION  
VOL. 588 PG. 180  
88-47-69

STATE OF CONNECTICUT  
FORMERLY  
FRANK H. SELANDER, ET AL  
CERTIFICATE OF CONDEMNATION  
VOL. 589 PG. 240  
88-47-70

- REFERENCES:
1. CONNDOT CONSTRUCTION PROJECT NO. 88-47, SHEET 35 DATED 1966.
  2. CONNDOT R.O.W. MAP NO. 88-06, SHEET 2 OF 10, DATED DECEMBER 11, 1989
  3. CONNDOT B.R.C. FILE NO. 88-47-68
  4. CONNDOT B.R.C. FILE NO. 88-47-69
  5. CONNDOT B.R.C. FILE NO. 88-47-70

- NOTES:
1. THIS COMPILATION PLAN HAS BEEN PREPARED IN ACCORDANCE WITH THE REGULATIONS OF CONNECTICUT STATE AGENCIES, SECTIONS 20-300B-1 THROUGH 20-300B-20, AND THE "STANDARDS FOR SURVEYS AND MAPS IN THE STATE OF CONNECTICUT" AS ADOPTED BY THE CONNECTICUT ASSOCIATION OF LAND SURVEYORS, INC. ON SEPTEMBER 26, 1996. IT CONFORMS TO CLASS D ACCURACY AND IS INTENDED TO DEPICT THE LIMITS OF PROPERTY TRANSACTION AS NOTED HEREON. THIS PLAN WAS COMPILED FROM OTHER MAPS, RECORD RESEARCH, AND/OR OTHER SOURCES OF INFORMATION. IT IS NOT TO BE CONSTRUED AS HAVING BEEN NECESSARILY OBTAINED AS THE RESULT OF A FIELD SURVEY AND IS SUBJECT TO SUCH CHANGE AS AN ACCURATE FIELD SURVEY MAY DISCLOSE.
  2. THE TOPOGRAPHY AND PROPERTY LINE EVIDENCE DEPICTED ARE BASED UPON THE SURVEY/MAPPING DATA AS REFERENCED. UNLESS OTHERWISE NOTED, THESE PROPERTY/BOUNDARY LINES DO NOT REPRESENT THE PROFESSIONAL OPINION OF THE UNDERSIGNED.

TO MY KNOWLEDGE AND BELIEF, THIS MAP IS  
SUBSTANTIALLY CORRECT AS NOTED HEREON.



DATE	REVISION	REQ. BY

VOID WITHOUT LIVE SIGNATURE AND EMBOSSED SEAL

TOWN NO. 088

PROJECT NO. 088-047 ROBERT J. BARON, P.L.S.

SERIAL NO. 070A TITLE MANAGER - SURVEY OPERATIONS

SHEET 1 OF 1 DATE \_\_\_\_\_

DRAWN BY LAL

DATE 12/2012

CHECKED BY TJB

DATE 12/2012

**COMPILATION PLAN**

**TOWN OF NEW BRITAIN**  
MAP SHOWING LAND RELEASED TO

BY  
**THE STATE OF CONNECTICUT**  
DEPARTMENT OF TRANSPORTATION  
**BLACK ROCK AVENUE AT  
NEW HAMPSHIRE DRIVE**

SCALE 1" = 40' THOMAS A. HARLEY, P.E.  
CHIEF ENGINEER - BUREAU OF ENGINEERING AND CONSTRUCTION

DEC 2012