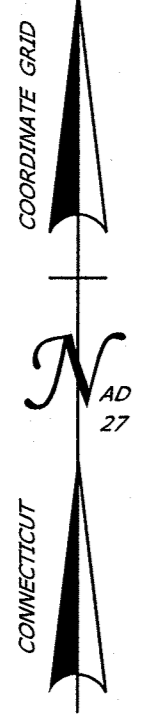


E 158400



STATE OF CONNECTICUT
FORMERLY
ESTATE OF JACK L. SEELEY, SR.
CONSERVATOR'S DEED
VOL. 3911, PG. 177
151-270-1

N/F
ROSEMARY D. TORTORA

RELEASE LINE &
PROPERTY LINE
1.6m± (5.25')

STATE OF CONNECTICUT
FORMERLY
JAMES J. SESTITO ET AL
WARRANTY DEED
VOL. 3850, PG. 55
151-270-2

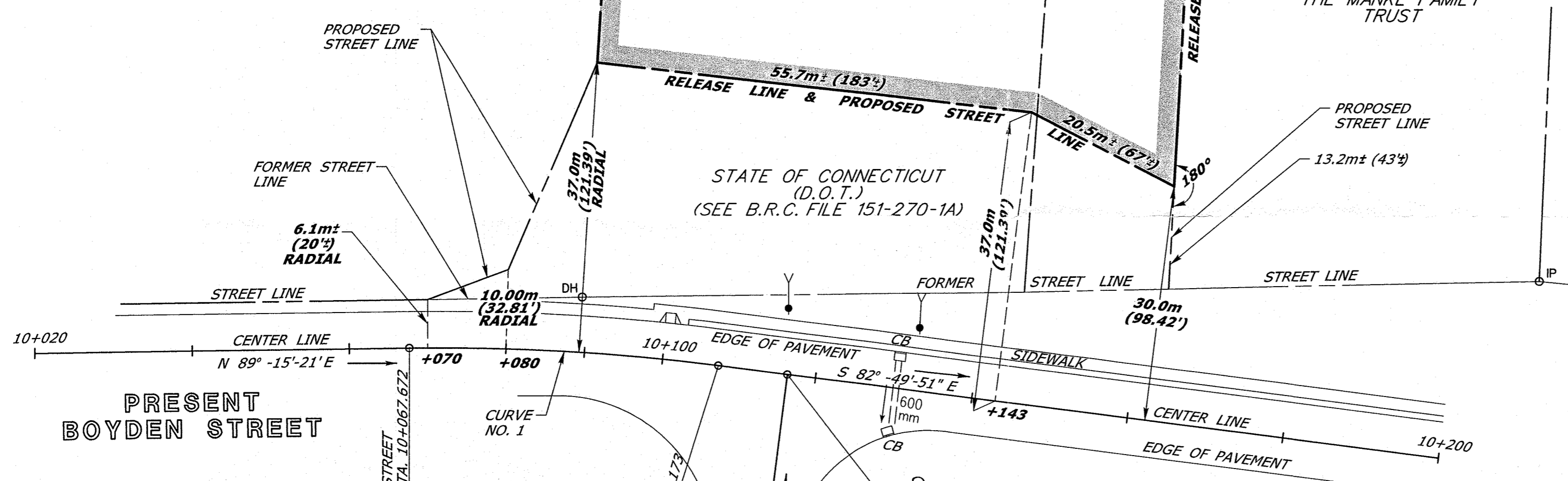
**RELEASE AREA = 5,463±m²
(1.35±ACRES)**

N/F
HAZEL E. ROSA

N 83900

N/F
THE MANKE FAMILY
TRUST

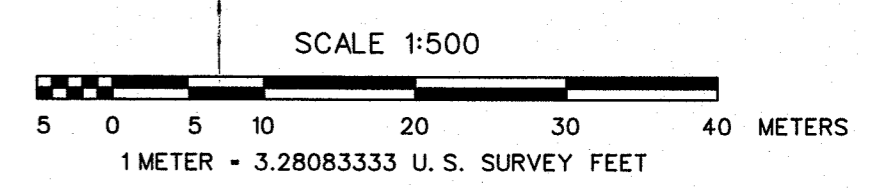
STATE OF CONNECTICUT
(D.O.T.)
(SEE B.R.C. FILE 151-270-1A)



- REFERENCES:
1. CONNDOT CONSTRUCTION PROJECT NO. 151-270, SHEETS 5 AND 12, DATED 2000
 2. CONNDOT BRC FILE NO. 151-270-1
 3. CONNDOT BRC FILE NO. 151-270-1A
 4. CONNDOT BRC FILE NO. 151-270-2
 5. CONNDOT BRC FILE NO. 151-270-3
 6. CONNDOT BRC FILE NO. 151-270-4

PRESENT BOYDEN STREET
BASE LINE CURVE DATA NO. 1
Δ = 7° -54' -48.0"
R = 286.000m (938.32')
L = 39.501m (129.60')
T = 19.782m (64.90')

PRESENT COOKE STREET
CENTER LINE P.I. STA. 10+107.173
N 83841.955
E 158484.859



NOTES:

1. THIS COMPILATION PLAN HAS BEEN PREPARED IN ACCORDANCE WITH THE REGULATIONS OF CONNECTICUT STATE AGENCIES, SECTIONS 20-300B-1 THROUGH 20-300B-20, AND THE "STANDARDS FOR SURVEYS AND MAPS IN THE STATE OF CONNECTICUT" AS ADOPTED BY THE CONNECTICUT ASSOCIATION OF LAND SURVEYORS, INC. ON SEPTEMBER 26, 1996. IT CONFORMS TO CLASS D ACCURACY AND IS INTENDED TO DEPICT THE LIMITS OF PROPERTY TRANSACTION AS NOTED HEREON. THIS PLAN WAS COMPILED FROM OTHER MAPS, RECORD RESEARCH, AND/OR OTHER SOURCES OF INFORMATION. IT IS NOT TO BE CONSTRUED AS HAVING BEEN NECESSARILY OBTAINED AS THE RESULT OF A FIELD SURVEY AND IS SUBJECT TO SUCH CHANGE AS AN ACCURATE FIELD SURVEY MAY DISCLOSE.

2. THE TOPOGRAPHY AND PROPERTY LINE EVIDENCE DEPICTED ARE BASED UPON THE SURVEY/MAPPING DATA AS REFERENCED. UNLESS OTHERWISE NOTED, THESE PROPERTY/BOUNDARY LINES DO NOT REPRESENT THE PROFESSIONAL OPINION OF THE UNDERSIGNED.

TO MY KNOWLEDGE AND BELIEF, THIS MAP IS SUBSTANTIALLY CORRECT AS NOTED HEREON.

PLS #18824

DRAWN BY	LAL
DATE	3/18/14
CHECKED BY	CEA
DATE	3/19/14

DATE	REVISION	REQ. BY

VOID WITHOUT LIVE SIGNATURE AND EMBOSSED SEAL	
TOWN NO.	151
PROJECT NO.	151-270
SERIAL NO.	1B
SHEET	1 OF 1
DATE	

COMPILATION PLAN

TOWN OF WATERBURY
MAP SHOWING LAND RELEASED TO

BY
THE STATE OF CONNECTICUT
DEPARTMENT OF TRANSPORTATION
RECONSTRUCTION OF BOYDEN STREET
AT COOKE STREET

SCALE 1:500

THOMAS A. HARLEY, P.E.
CHIEF ENGINEER - BUREAU OF ENGINEERING AND CONSTRUCTION

MARCH 2014