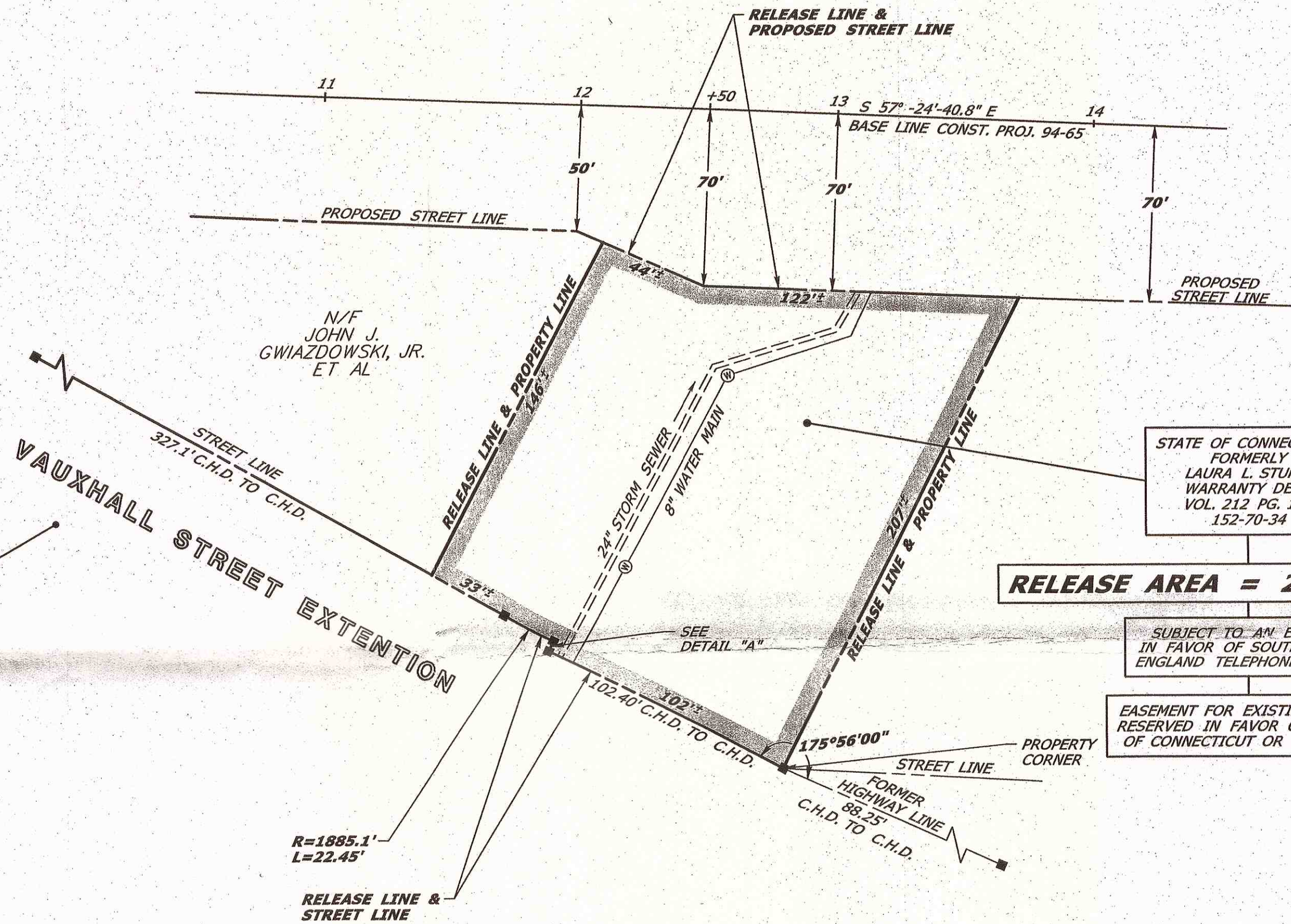


RELOCATED VAUXHALL STREET



REVERSION TO TOWN BY AGREEMENT JULY 1, 1961

STATE OF CONNECTICUT FORMERLY LAURA L. STUMM WARRANTY DEED VOL. 212 PG. 136 152-70-34

RELEASE AREA = 26,884±SQ. FT.

SUBJECT TO AN EASEMENT IN FAVOR OF SOUTHERN NEW ENGLAND TELEPHONE COMPANY

EASEMENT FOR EXISTING UTILITIES RESERVED IN FAVOR OF THE STATE OF CONNECTICUT OR ITS ASSIGNS

REFERENCES:

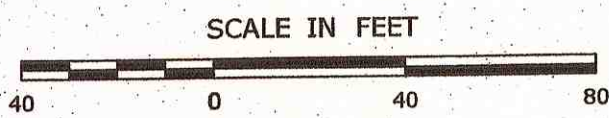
1. CONNDOT CONSTRUCTION PROJECT 94-65, SHEET 10 AND 23, DATED 1959
2. CONNDOT CONSTRUCTION PROJECT 152-86, SHEET 203 & 214 DATED 1974, SCALE 1"=40'
3. CONNDOT R.O.W. MAP 152-13, SHEET 4 OF 4, DATED MAY 6, 1966, REVISED JUNE 29, 1984
4. CONNDOT R.O.W. MAP 152-04, SHEET 4 OF 4, DATED FEBRUARY 28, 1938
5. CONNDOT B.R.C. FILE 152-70-34
6. CONNDOT B.R.C. FILE 152-35-11A
7. CONNDOT B.R.C. FILE 94-65-17
8. CONNDOT B.R.C. FILE 94-65-18
9. CONNDOT B.R.C. FILE 94-65-19

NOTES:

1. THIS COMPILATION PLAN HAS BEEN PREPARED IN ACCORDANCE WITH THE REGULATIONS OF CONNECTICUT STATE AGENCIES, SECTIONS 20-300B-1 THROUGH 20-300B-20, AND THE "STANDARDS FOR SURVEYS AND MAPS IN THE STATE OF CONNECTICUT" AS ADOPTED BY THE CONNECTICUT ASSOCIATION OF LAND SURVEYORS, INC. ON SEPTEMBER 26, 1996. IT CONFORMS TO CLASS D ACCURACY AND IS INTENDED TO DEPICT THE LIMITS OF PROPERTY TRANSACTION AS NOTED HEREON. THIS PLAN WAS COMPILED FROM OTHER MAPS, RECORD RESEARCH, AND/OR OTHER SOURCES OF INFORMATION. IT IS NOT TO BE CONSTRUED AS HAVING BEEN NECESSARILY OBTAINED AS THE RESULT OF A FIELD SURVEY AND IS SUBJECT TO SUCH CHANGE AS AN ACCURATE FIELD SURVEY MAY DISCLOSE.

2. THE TOPOGRAPHY AND PROPERTY LINE EVIDENCE DEPICTED ARE BASED UPON THE SURVEY/MAPPING DATA AS REFERENCED. UNLESS OTHERWISE NOTED, THESE PROPERTY/BOUNDARY LINES DO NOT REPRESENT THE PROFESSIONAL OPINION OF THE UNDERSIGNED.

TO MY KNOWLEDGE AND BELIEF, THIS MAP IS SUBSTANTIALLY CORRECT AS NOTED HEREON.



DATE	REVISION	REQ. BY

VOID WITHOUT LIVE SIGNATURE AND EMBOSSED SEAL

TOWN NO. 152

PROJECT NO. 152-070

SERIAL NO. 034C TITLE MANAGER - SURVEY OPERATIONS

SHEET 1 OF 1 DATE _____

PLS #18824

ROBERT J. BARON, P.L.S.

DRAWN BY LAL

DATE 12/2011

CHECKED BY CEA

DATE 12/2011

COMPILATION PLAN

TOWN OF WATERFORD

MAP SHOWING LAND RELEASED TO

BY

THE STATE OF CONNECTICUT

DEPARTMENT OF TRANSPORTATION

RECONSTRUCTION OF I-95

RELOCATION OF CT ROUTE 85

SCALE 1"=40'

THOMAS A. HARLEY, P.E.

CHIEF ENGINEER - BUREAU OF ENGINEERING AND CONSTRUCTION

DEC 2011