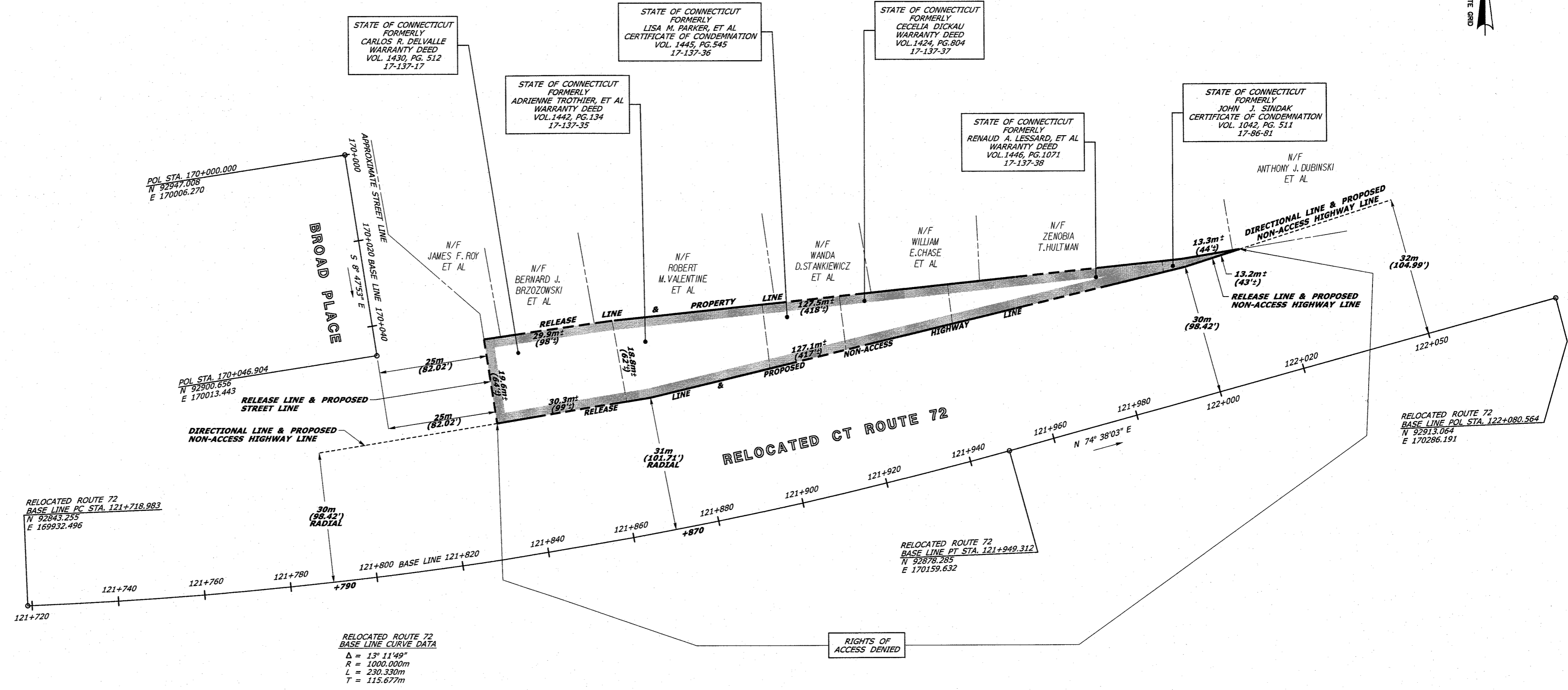
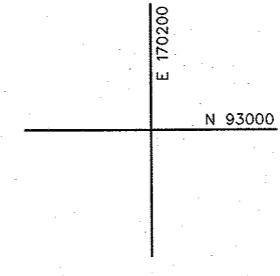
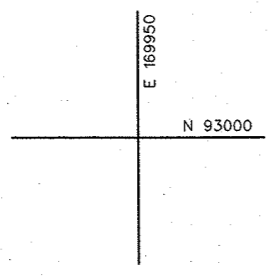




**RELEASE AREA = 2004±SQ. M.
(21,571±SQ.FT.)**

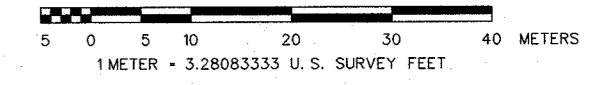


RELOCATED ROUTE 72
BASE LINE PC STA. 121+718.983
N 92843.255
E 169932.496

RELOCATED ROUTE 72
BASE LINE CURVE DATA
Δ = 13° 11' 49"
R = 1000.000m
L = 230.330m
T = 115.677m

RIGHTS OF ACCESS DENIED

SCALE 1:500



- REFERENCES:
1. CONN. D.O.T. CONSTRUCTION PROJECT 17-137, SHEET NO. 154, 159 AND 164A, SCALE 1:500, DATED JULY 19, 2006.
 2. CONN. D.O.T. B.R.C. FILE 17-137-17
 3. CONN. D.O.T. B.R.C. FILE 17-137-35
 4. CONN. D.O.T. B.R.C. FILE 17-137-36
 5. CONN. D.O.T. B.R.C. FILE 17-137-37
 6. CONN. D.O.T. B.R.C. FILE 17-137-38
 7. CONN. D.O.T. B.R.C. FILE 17-86-81

NOTES:

1. THIS COMPILATION PLAN HAS BEEN PREPARED IN ACCORDANCE WITH THE REGULATIONS OF CONNECTICUT STATE AGENCIES, SECTIONS 20-300B-1 THROUGH 20-300B-30, AND THE 'STANDARDS FOR SURVEYS AND MAPS IN THE STATE OF CONNECTICUT' AS ADOPTED BY THE CONNECTICUT ASSOCIATION OF LAND SURVEYORS, INC. ON SEPTEMBER 26, 1996. IT CONFORMS TO CLASS D ACCURACY AND IS INTENDED TO DEPICT THE LIMITS OF PROPERTY TRANSACTION AS NOTED HEREON. THIS PLAN WAS COMPILED FROM OTHER MAPS, RECORD RESEARCH, AND/OR OTHER SOURCES OF INFORMATION. IT IS NOT TO BE CONSTRUED AS HAVING BEEN NECESSARILY OBTAINED AS THE RESULT OF A FIELD SURVEY AND IS SUBJECT TO SUCH CHANGE AS AN ACCURATE FIELD SURVEY MAY DISCLOSE.
2. THE TOPOGRAPHY AND PROPERTY LINE EVIDENCE DEPICTED ARE BASED UPON THE SURVEY/MAPPING DATA AS REFERENCED. UNLESS OTHERWISE NOTED, THESE PROPERTY/BOUNDARY LINES DO NOT REPRESENT THE PROFESSIONAL OPINION OF THE UNDERSIGNED.

DRAWN BY AB
DATE 8/2012
CHECKED BY TJB
DATE 8/2012



Files: Z:\V8_CTDOT_NON_PROJECTS\Survey\Release\010_019\SV_CS_01T_013T_01TRMA.dwg

TO MY KNOWLEDGE AND BELIEF, THIS MAP IS SUBSTANTIALLY CORRECT AS NOTED HEREON.

| DATE | REVISION | REQ. BY |
|------|----------|---------|
| | | |
| | | |
| | | |
| | | |

VOID WITHOUT LIVE SIGNATURE AND EMBOSSED SEAL
TOWN NO. 17
PROJECT NO. 17-137
SERIAL NO. 17A
SHEET 1 OF 1
DATE
ROBERT J. BARON, P.L.S.
TITLE: MANAGER - SURVEY OPERATIONS

COMPILATION PLAN
TOWN OF BRISTOL
MAP SHOWING LAND RELEASED TO
-
BY
THE STATE OF CONNECTICUT
DEPARTMENT OF TRANSPORTATION
RELOCATION OF ROUTE 72
SCALE 1"=500'
THOMAS A. HARLEY, P.E.
AUGUST 2012
CHIEF ENGINEER - BUREAU OF ENGINEERING AND CONSTRUCTION