



RELEASE AREA = 21,820 ± SQ. FT.

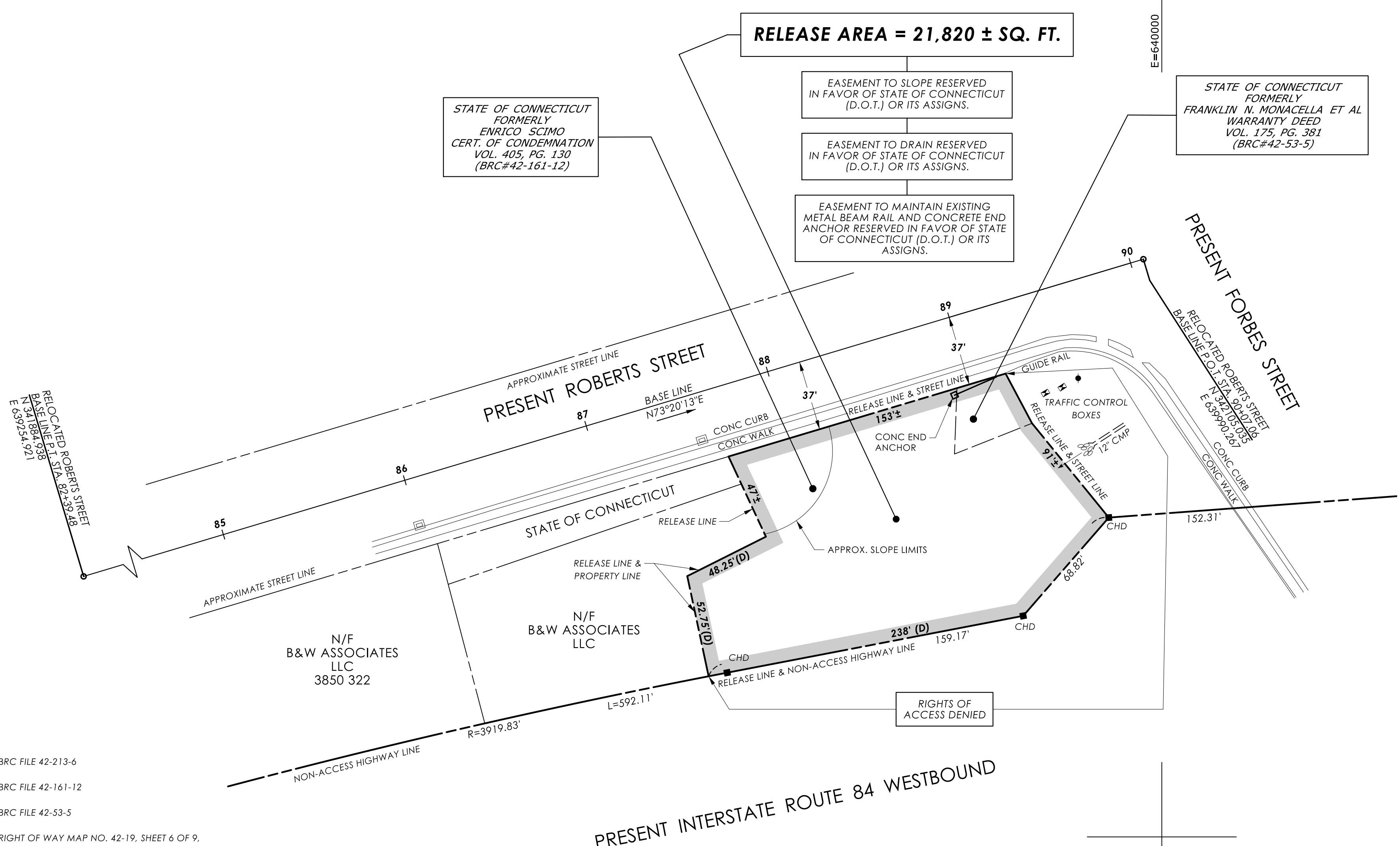
STATE OF CONNECTICUT
FORMERLY
ENRICO SCIMO
CERT. OF CONDEMNATION
VOL. 405, PG. 130
(BRC#42-161-12)

EASEMENT TO SLOPE RESERVED
IN FAVOR OF STATE OF CONNECTICUT
(D.O.T.) OR ITS ASSIGNS.

EASEMENT TO DRAIN RESERVED
IN FAVOR OF STATE OF CONNECTICUT
(D.O.T.) OR ITS ASSIGNS.

EASEMENT TO MAINTAIN EXISTING
METAL BEAM RAIL AND CONCRETE END
ANCHOR RESERVED IN FAVOR OF STATE
OF CONNECTICUT (D.O.T.) OR ITS
ASSIGNS.

STATE OF CONNECTICUT
FORMERLY
FRANKLIN N. MONACELLA ET AL
WARRANTY DEED
VOL. 175, PG. 381
(BRC#42-53-5)



REFERENCES:

1. CONNDOT BRC FILE 42-213-6
2. CONNDOT BRC FILE 42-161-12
3. CONNDOT BRC FILE 42-53-5
4. CONNDOT RIGHT OF WAY MAP NO. 42-19, SHEET 6 OF 9, DATED APRIL 30, 1992
5. CONNDOT CONSTRUCTION PROJECT 42-213, SHEET NO. 106B, DATED 1983, REVISED TO 7-18-85
6. 2019 STATEWIDE ORTHOPHOTOGRAPHY TILE NO. 035840_SE AND 040840_SW
7. VOL. 3734, PG. 170 (WARR.)
8. VOL. 3850, PG. 322 (WARR.)
9. VOL. 4078, PG. 110 (WARR.)

NOTES:

1. THIS COMPILATION PLAN HAS BEEN PREPARED IN ACCORDANCE WITH THE REGULATIONS OF CONNECTICUT STATE AGENCIES, SECTIONS 20-300B-1 THROUGH 20-300B-20, THE "MINIMUM STANDARDS OF ACCURACY, CONTENT & CERTIFICATION FOR SURVEYS AND MAPS," AS AMENDED OCTOBER 26, 2018. IT CONFORMS TO CLASS D ACCURACY AND IS INTENDED TO DEPICT THE LIMITS OF THE PROPERTY TRANSACTION AS NOTED HEREON. THIS PLAN WAS COMPILED FROM OTHER MAPS, RECORD RESEARCH AND/OR OTHER SOURCES OF INFORMATION. IT IS NOT TO BE CONSTRUED AS HAVING BEEN NECESSARILY OBTAINED AS THE RESULT OF A FIELD SURVEY AND IS SUBJECT TO SUCH CHANGE AS AN ACCURATE FIELD SURVEY MAY DISCLOSE.
2. THE TOPOGRAPHY AND PROPERTY LINE EVIDENCE DEPICTED ARE BASED UPON THE SURVEY/MAPPING DATA AS REFERENCED. UNLESS OTHERWISE NOTED, THESE PROPERTY/BOUNDARY LINES DO NOT REPRESENT THE PROFESSIONAL OPINION OF THE UNDERSIGNED.

TO MY KNOWLEDGE AND BELIEF, THIS MAP IS SUBSTANTIALLY CORRECT AS NOTED HEREON.



DATE	REVISION	REQ. BY
4/5/2023	REVISE RELEASE PARCEL	C.L.

PLS #18823
VOID WITHOUT LIVE SIGNATURE AND EMBOSSED SEAL
TOWN NO. 42
PROJECT NO. 42-161 CHRISTINE E. AUBREY, P.L.S.
SERIAL NO. 12A TITLE MANAGER - SURVEY OPERATIONS
SHEET 1 OF 1 DATE

DRAWN BY SEB
DATE 11-10-2022
CHECKED BY TJB
DATE 12-8-2022

COMPILATION PLAN
TOWN OF EAST HARTFORD
MAP SHOWING LAND RELEASED TO

BY
THE STATE OF CONNECTICUT
DEPARTMENT OF TRANSPORTATION
**INTERSTATE ROUTE 84
(LIMITED ACCESS HIGHWAY)**

SCALE 1" = 40'
SCOTT A. HILL, P.E.
CHIEF ENGINEER - BUREAU OF ENGINEERING AND CONSTRUCTION

NOVEMBER 2022