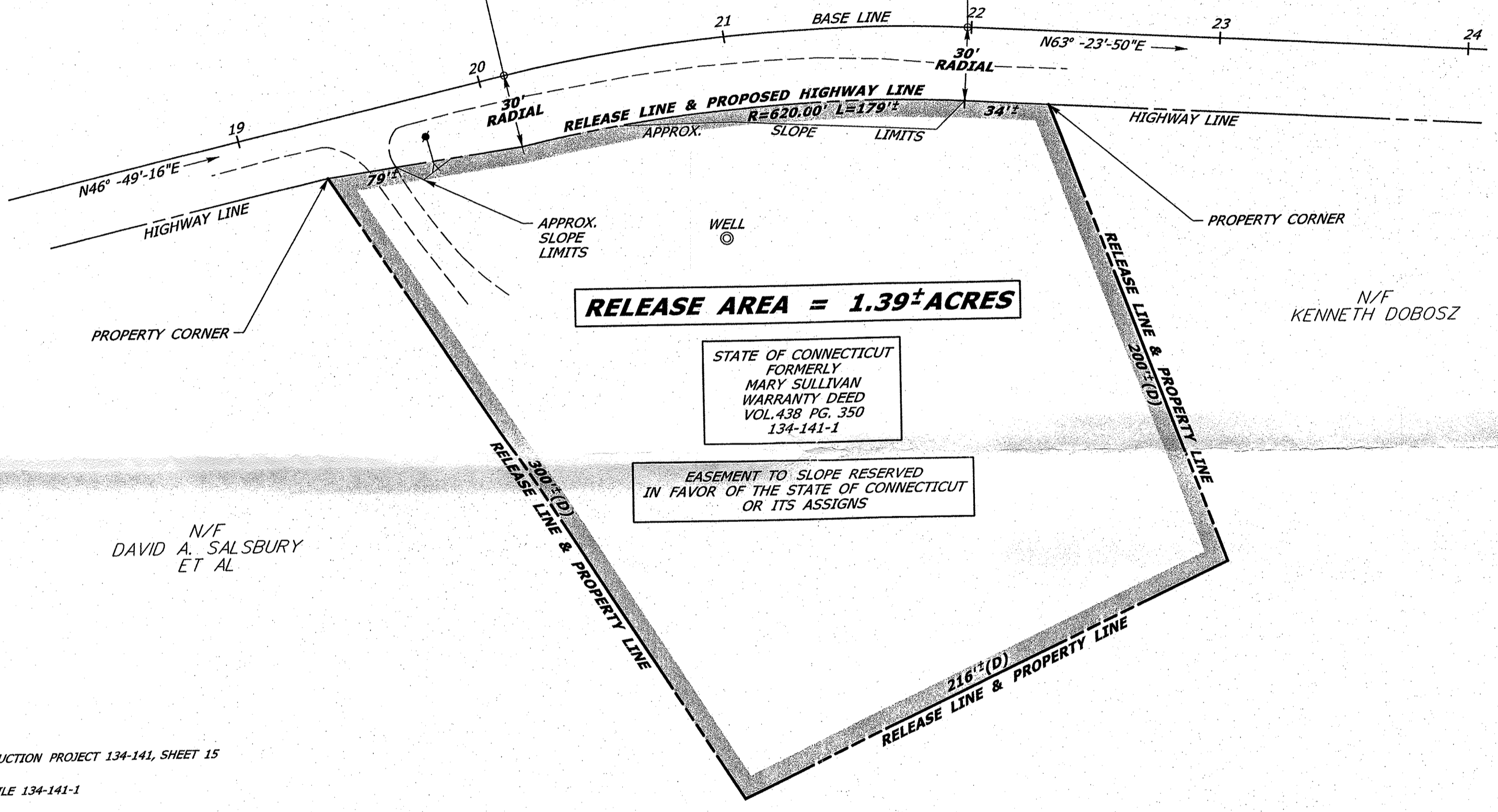


BASE LINE CURVE DATA
 $\Delta = 16^\circ - 34' - 34''$
 $R = 650.00'$
 $L = 188.05'$
 $T = 94.69'$

BASE LINE P.C. STA. 20+10.39
 N 916646.07
 E 1120646.50

BASE LINE P.T. STA. 21+98.44
 N 916753.26
 E 1120800.21

CT ROUTE 319 - ORCUTTVILLE ROAD



RELEASE AREA = 1.39± ACRES

STATE OF CONNECTICUT
 FORMERLY
 MARY SULLIVAN
 WARRANTY DEED
 VOL. 438 PG. 350
 134-141-1

EASEMENT TO SLOPE RESERVED
 IN FAVOR OF THE STATE OF CONNECTICUT
 OR ITS ASSIGNS

N/F
 DAVID A. SALSBURY
 ET AL

N/F
 KENNETH DOBOSZ

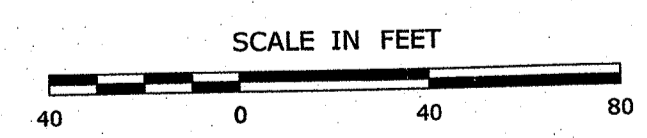
REFERENCES:

1. CONNDOT CONSTRUCTION PROJECT 134-141, SHEET 15
2. CONNDOT B.R.C. FILE 134-141-1

NOTES:

1. THIS COMPILATION PLAN HAS BEEN PREPARED IN ACCORDANCE WITH THE REGULATIONS OF CONNECTICUT STATE AGENCIES, SECTIONS 20-300B-1 THROUGH 20-300B-20, AND THE "STANDARDS FOR SURVEYS AND MAPS IN THE STATE OF CONNECTICUT" AS ADOPTED BY THE CONNECTICUT ASSOCIATION OF LAND SURVEYORS, INC. ON SEPTEMBER 26, 1996. IT CONFORMS TO CLASS D ACCURACY AND IS INTENDED TO DEPICT THE LIMITS OF PROPERTY TRANSACTION AS NOTED HEREON. THIS PLAN WAS COMPILED FROM OTHER MAPS, RECORD RESEARCH, AND/OR OTHER SOURCES OF INFORMATION. IT IS NOT TO BE CONSTRUED AS HAVING BEEN NECESSARILY OBTAINED AS THE RESULT OF A FIELD SURVEY AND IS SUBJECT TO SUCH CHANGE AS AN ACCURATE FIELD SURVEY MAY DISCLOSE.
2. THE TOPOGRAPHY AND PROPERTY LINE EVIDENCE DEPICTED ARE BASED UPON THE SURVEY/MAPPING DATA AS REFERENCED. UNLESS OTHERWISE NOTED, THESE PROPERTY/BOUNDARY LINES DO NOT REPRESENT THE PROFESSIONAL OPINION OF THE UNDERSIGNED.

DRAWN BY LAL
 DATE 6/2011
 CHECKED BY CEA
 DATE 6/2011



DATE	REVISION	REQ. BY

TO MY KNOWLEDGE AND BELIEF, THIS MAP IS SUBSTANTIALLY CORRECT AS NOTED HEREON.

VOID WITHOUT LIVE SIGNATURE AND EMBOSSED SEAL
 TOWN NO. 134
 PROJECT NO. 134-141
 SERIAL NO. 001A
 SHEET 1 OF 1
 TITLE ROBERT J. BARON, P.L.S. MANAGER - SURVEY OPERATIONS
 DATE

COMPILATION PLAN

TOWN OF STAFFORD
 MAP SHOWING LAND RELEASED TO

BY
THE STATE OF CONNECTICUT
 DEPARTMENT OF TRANSPORTATION

CT ROUTE 319 - ORCUTTVILLE ROAD

SCALE 1" = 40' JUNE 2011
 THOMAS A. HARLEY, P.E.
 CHIEF ENGINEER - BUREAU OF ENGINEERING AND CONSTRUCTION