

SOUTH WARREN STREET
CONSTRUCTION LINE
CURVE DATA 7

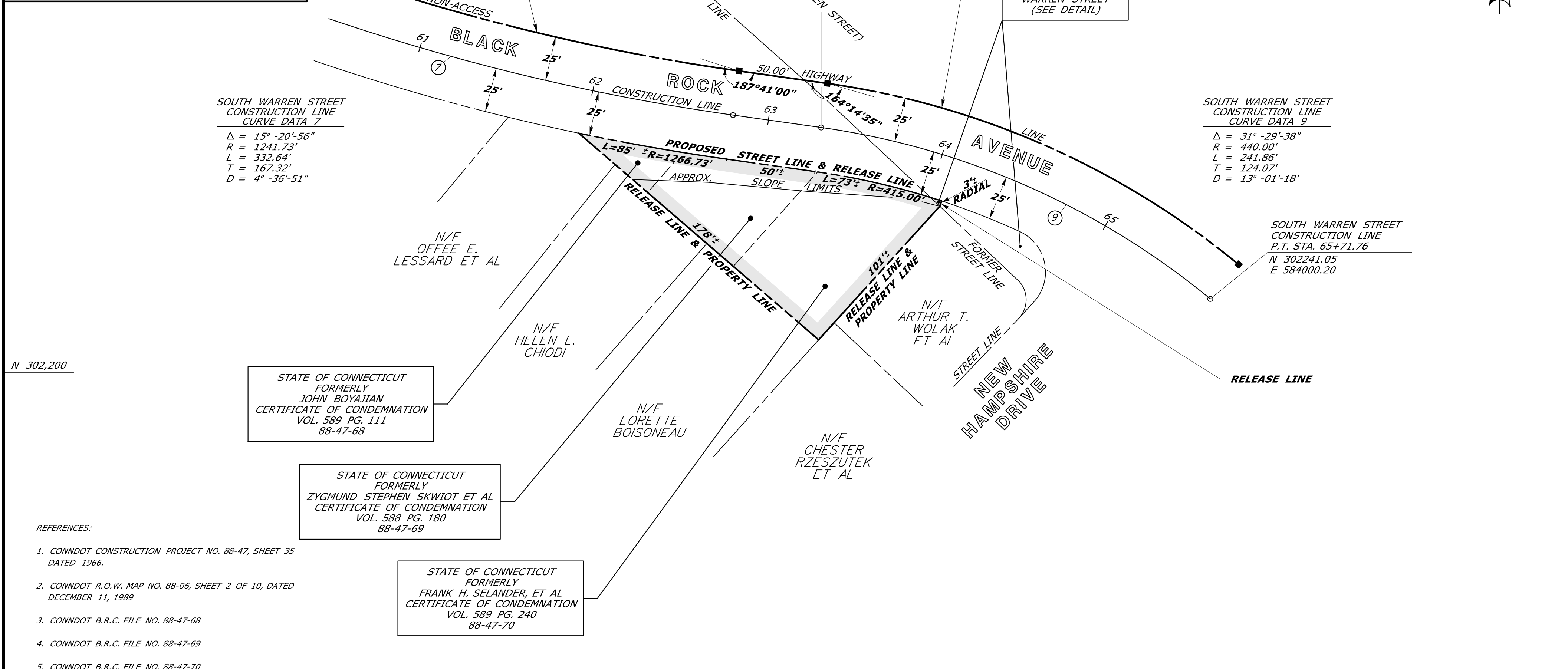
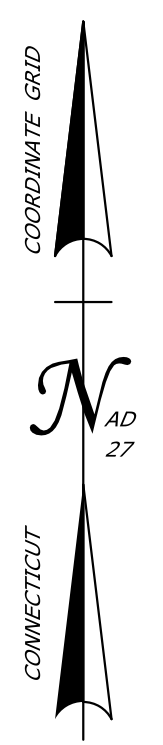
$\Delta = 15^\circ -20' -56''$
 $R = 1241.73'$
 $L = 332.64'$
 $T = 167.32'$
 $D = 4^\circ -36' -51''$

SOUTH WARREN STREET
CONSTRUCTION LINE
CURVE DATA 9

$\Delta = 31^\circ -29' -38''$
 $R = 440.00'$
 $L = 241.86'$
 $T = 124.07'$
 $D = 13^\circ -01' -18''$

RELEASE AREA = 9,625± SQ. FT.

EASEMENT TO SLOPE RESERVED
IN FAVOR OF STATE OF CONNECTICUT
(D.O.T.) OR IT'S ASSIGNS.



STATE OF CONNECTICUT
FORMERLY
JOHN BOYAJIAN
CERTIFICATE OF CONDEMNATION
VOL. 589 PG. 111
88-47-68

STATE OF CONNECTICUT
FORMERLY
ZYGmund STEPHEN SKWIOT ET AL
CERTIFICATE OF CONDEMNATION
VOL. 588 PG. 180
88-47-69

STATE OF CONNECTICUT
FORMERLY
FRANK H. SELANDER, ET AL
CERTIFICATE OF CONDEMNATION
VOL. 589 PG. 240
88-47-70

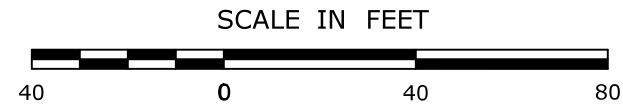
REFERENCES:

1. CONNDOT CONSTRUCTION PROJECT NO. 88-47, SHEET 35 DATED 1966.
2. CONNDOT R.O.W. MAP NO. 88-06, SHEET 2 OF 10, DATED DECEMBER 11, 1989
3. CONNDOT B.R.C. FILE NO. 88-47-68
4. CONNDOT B.R.C. FILE NO. 88-47-69
5. CONNDOT B.R.C. FILE NO. 88-47-70

NOTES:

1. THIS COMPILATION PLAN HAS BEEN PREPARED IN ACCORDANCE WITH THE REGULATIONS OF CONNECTICUT STATE AGENCIES, SECTIONS 20-300B-1 THROUGH 20-300B-20, AND THE "STANDARDS FOR SURVEYS AND MAPS IN THE STATE OF CONNECTICUT" AS ADOPTED BY THE CONNECTICUT ASSOCIATION OF LAND SURVEYORS, INC. ON SEPTEMBER 26, 1996. IT CONFORMS TO CLASS D ACCURACY AND IS INTENDED TO DEPICT THE LIMITS OF PROPERTY TRANSACTION AS NOTED HEREON. THIS PLAN WAS COMPILED FROM OTHER MAPS, RECORD RESEARCH, AND/OR OTHER SOURCES OF INFORMATION. IT IS NOT TO BE CONSTRUED AS HAVING BEEN NECESSARILY OBTAINED AS THE RESULT OF A FIELD SURVEY AND IS SUBJECT TO SUCH CHANGE AS AN ACCURATE FIELD SURVEY MAY DISCLOSE.
2. THE TOPOGRAPHY AND PROPERTY LINE EVIDENCE DEPICTED ARE BASED UPON THE SURVEY/MAPPING DATA AS REFERENCED. UNLESS OTHERWISE NOTED, THESE PROPERTY/BOUNDARY LINES DO NOT REPRESENT THE PROFESSIONAL OPINION OF THE UNDERSIGNED.

TO MY KNOWLEDGE AND BELIEF, THIS MAP IS SUBSTANTIALLY CORRECT AS NOTED HEREON.



DATE	REVISION	REQ. BY

PLS #18824

VOID WITHOUT LIVE SIGNATURE AND EMBOSSED SEAL

TOWN NO. 088

PROJECT NO. 088-047 ROBERT J. BARON, P.L.S.

SERIAL NO. 070A TITLE MANAGER - SURVEY OPERATIONS

SHEET 1 OF 1 DATE _____

DRAWN BY LAL

DATE 12/2012

CHECKED BY TJB

DATE 12/2012

COMPILATION PLAN

TOWN OF NEW BRITAIN
MAP SHOWING LAND RELEASED TO

BY
THE STATE OF CONNECTICUT
DEPARTMENT OF TRANSPORTATION
BLACK ROCK AVENUE AT
NEW HAMPSHIRE DRIVE

SCALE 1" = 40' DEC 2012

THOMAS A. HARLEY, P.E.
CHIEF ENGINEER - BUREAU OF ENGINEERING AND CONSTRUCTION