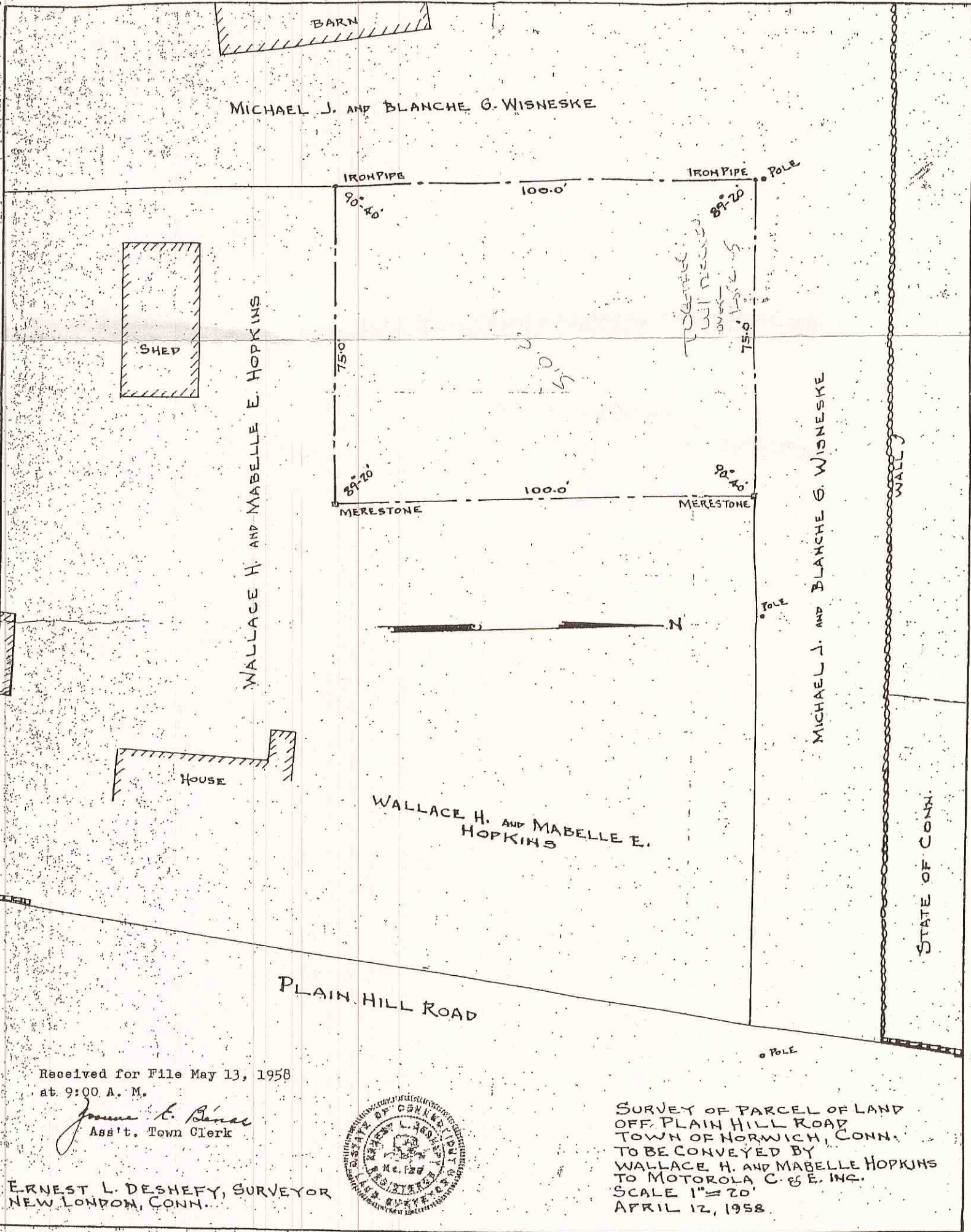


98



Received for File May 13, 1958
at 9:00 A. M.

James L. Bernal
Ass't. Town Clerk

ERNEST L. DESHEFY, SURVEYOR
NEW LONDON, CONN.



SURVEY OF PARCEL OF LAND
OFF PLAIN HILL ROAD
TOWN OF NORWICH, CONN.
TO BE CONVEYED BY
WALLACE H. AND MABELLE HOPKINS
TO MOTOROLA C. & E. INC.
SCALE 1" = 20'
APRIL 12, 1958.