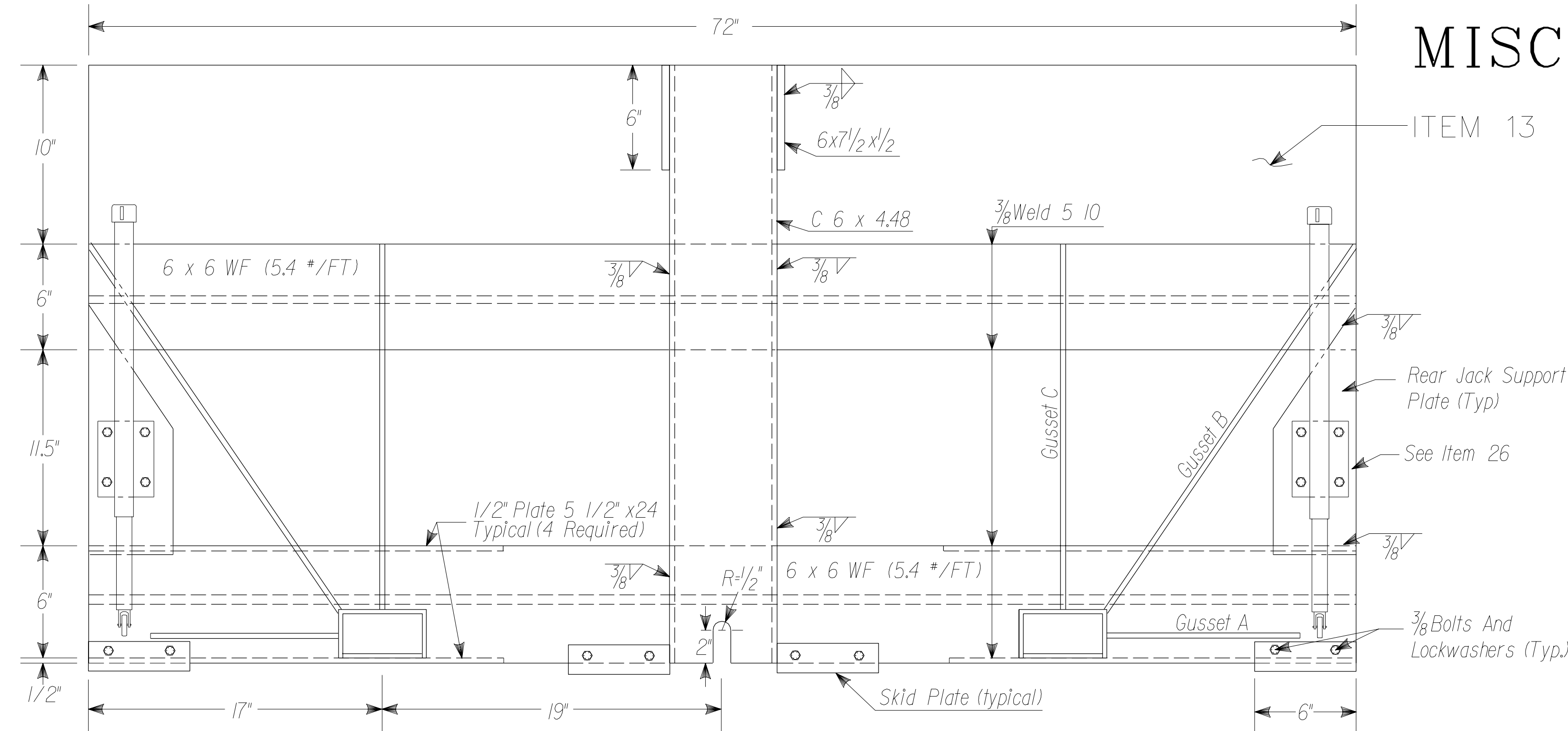


MISCELLANEOUS DETAILS

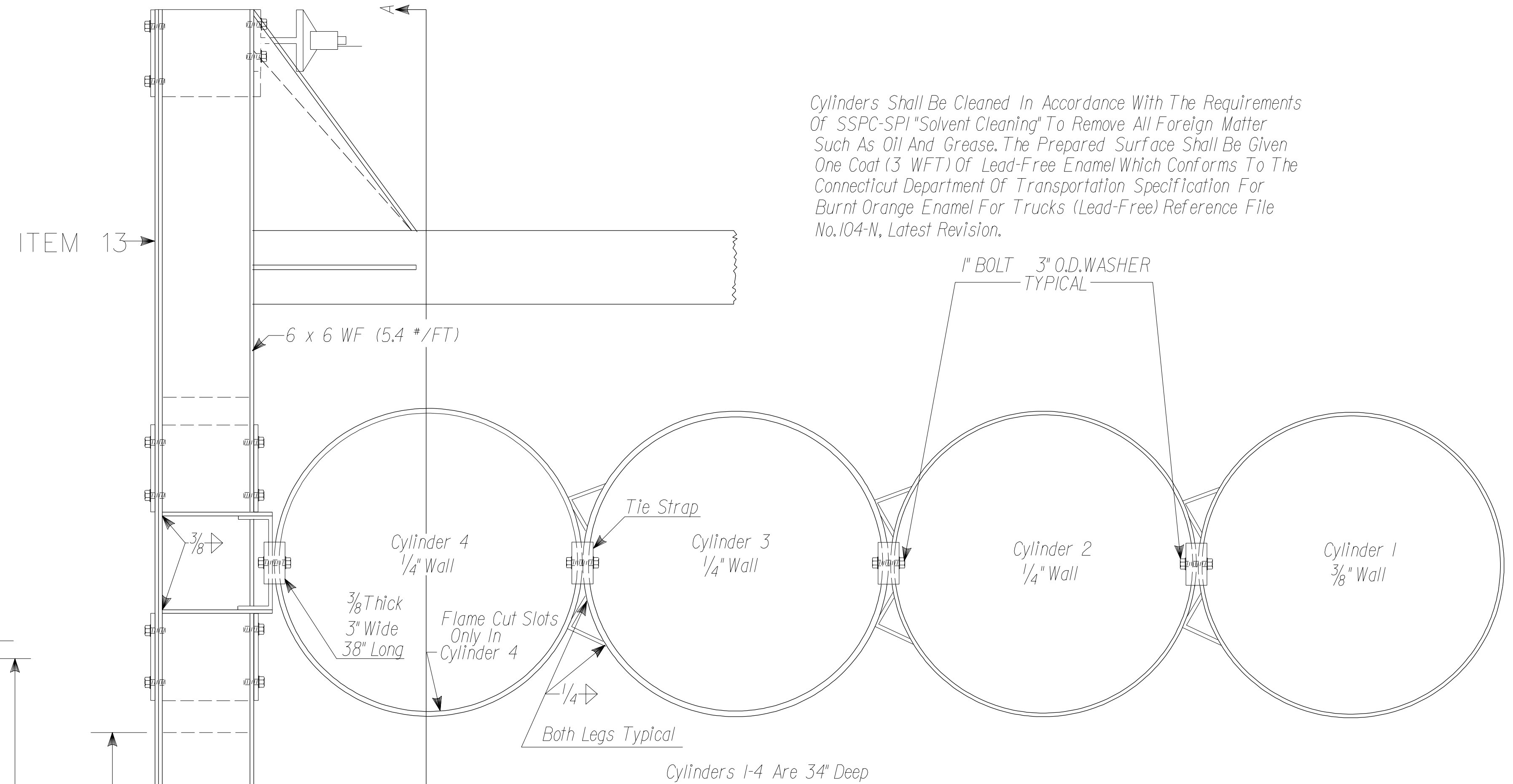
NOT TO SCALE

F.H.W.A. REGION NO.	STATE	TOWN	FED. AID PROJ. NO.	PROJ. NO.	YEAR	ROUTE NO.	SHEET NO.	TOTAL SHEETS
1	CONN.							

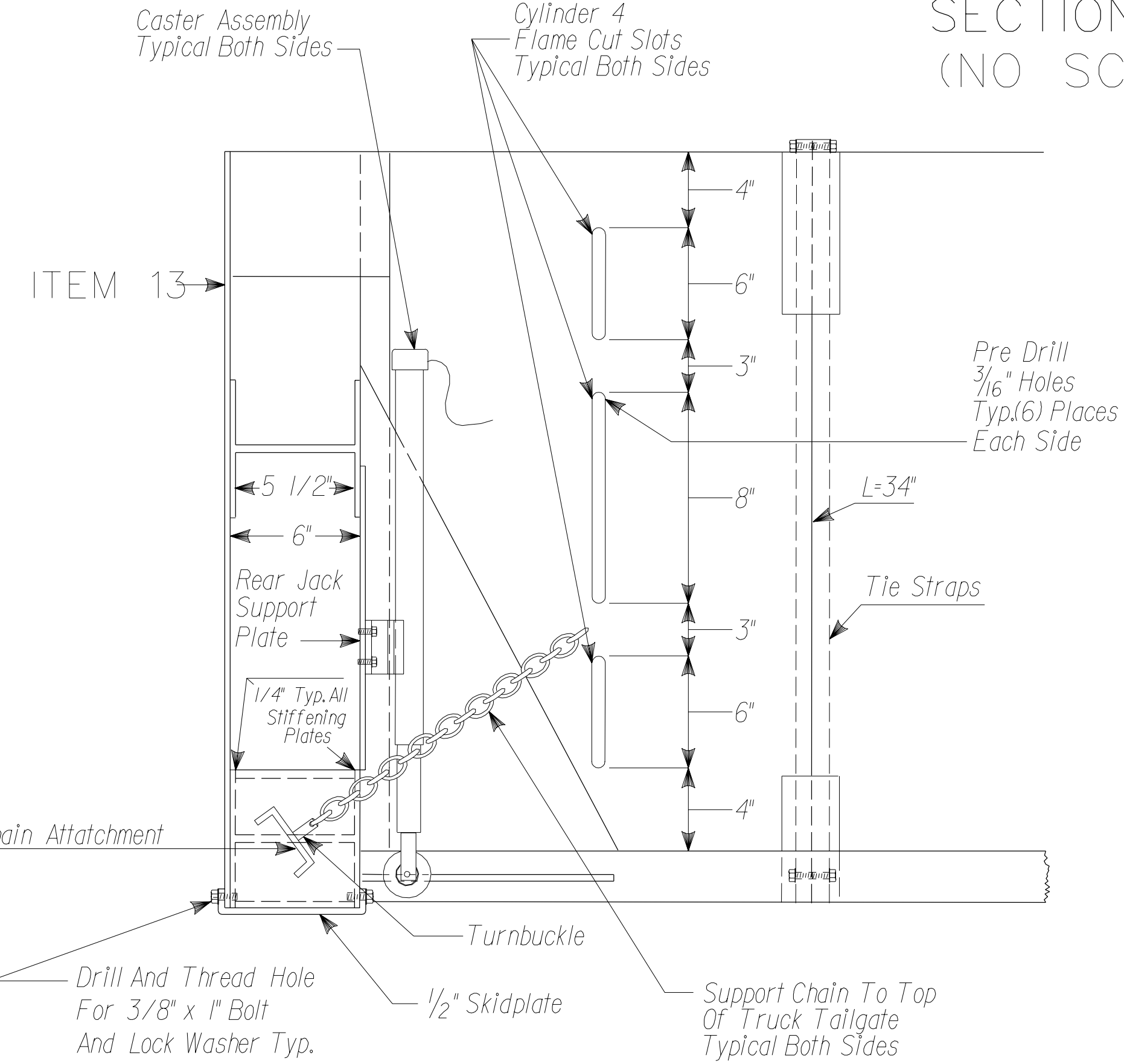


FRONT VIEW SECTION AA (NO SCALE)

ALL COMPONENTS TO BE 6061-T6 ALUMINUM USE COMPATIBLE ALLOY IN WELDING MATERIAL

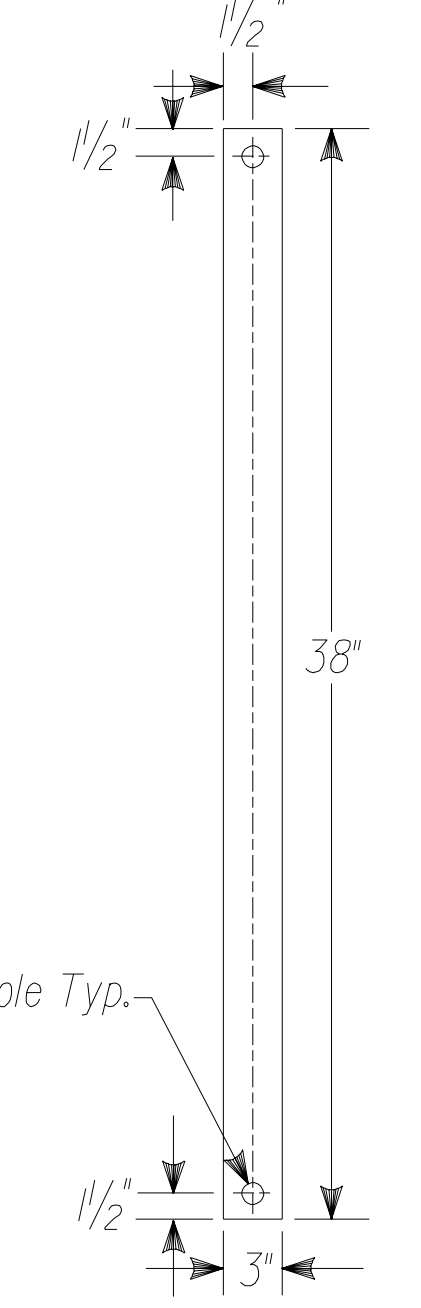


Cylinders Shall Be Cleaned In Accordance With The Requirements Of SSPC-SP1 "Solvent Cleaning" To Remove All Foreign Matter Such As Oil And Grease. The Prepared Surface Shall Be Given One Coat (3 WFT) Of Lead-Free Enamel Which Conforms To The Connecticut Department Of Transportation Specification For Burnt Orange Enamel For Trucks (Lead-Free) Reference File No. 104-N, Latest Revision.

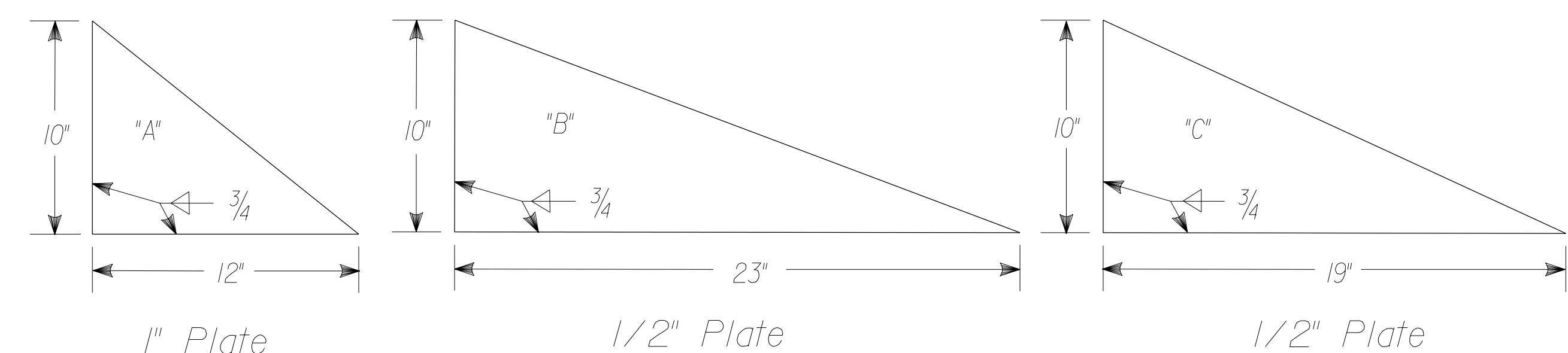


REAR ASSEMBLY SIDE VIEW (NO SCALE)

- Rear Caster / Jack Assembly Notes :
1. Jack Shall Be Sidewind Type Having A Lifting Capacity Of 1000 Lbs. And Throw Distance Of 18".
 2. Casters Shall Be Steel And Shall Not Swivel.
 3. The Location Of The Jack Mount In Relation To The Ground Shall Be Determined By The Jack Size And Manufacturer's Specifications.



TIE STRAPS



GUSSET PATTERNS

ITEMS 1-9 ARE A 36 STEEL

ITEM NO.	DESCRIPTION	QUANTITY
1	STRUCTURAL TUBING 6" X 4" X 104" X 1/4"	2
2	W 6 X 25 X 9"	1
3	3/8" PLATE 6" X 36"	1
4	1/4" PLATE 6" X 72"	4
5	1/2" PLATE 12" X 48"	1
6	3/8" PLATE 12" X 60"	2
7	C 4 X 5.4 7' LONG	2
8	3/8" PLATE 3" X 38"	10
9	L 2" X 2" X 1/4" 6' LONG	1

ITEMS 10-11 ARE A-53 GRADE B SEAMLESS STEEL PIPE OR API 5L STEEL PIPE CUT SQUARE

ITEM NO.	DESCRIPTION	QUANTITY
10	STEEL CYLINDER 34" DEEP .24" DIA. 3/8" THICK	1
11	STEEL CYLINDER 34" DEEP .24" DIA. 1/4" THICK	3
12	25' OF 1/4" CHAIN	1

ITEMS 13-19 ARE 6061 T6 OR 6061-64 ALUMINUM

ITEM NO.	DESCRIPTION	QUANTITY
13	1/4" PLATE 34" X 72"	1
14	6 X 6 WF (5.4 * /FT) - 6' LONG	2
15	SPECIAL CHANNEL - DEPTH - 5" WT / FT - 5.82 WIDTH - 2.875, LENGTH - 9'-6"	2
16	C 6 X 4.48 34" LONG	1
17	1/2" PLATE 48" X 48"	1
18	1/4" PLATE 4" X 108"	2
19	1" PLATE 10" X 12"	1
20	1 X 3/4 A 325 STRUCTURAL BOLT WITH NUTS	12
21	HI STR. STRUCTURAL WASHERS	12
22	1 X 4 A 325 STRUCTURAL BOLTS WITH NUTS	2
23	3/4 X 4 A 325 STRUCTURAL BOLTS WITH NUTS	4
24	HI STR. STRUCTURAL WASHERS	4
25	LOCK WASHERS	16
26	CASTER ASSEMBLY	4

NO.	DATE	DESCRIPTION	REV. SHEET NO.
1	3-1-95	Cylinder 2 Wall Thickness	1 OF 3
-	-	Increased Length Of Item 15	
-	-		
-	-		
-	-		

MANUAL REVISIONS TO THIS DOCUMENT ARE PROHIBITED. ALL REVISIONS MUST BE PERFORMED ON CADD FILE: HWYSLIB-CTMAI.MDS

CONNECTICUT TRUCK MOUNTED ATTENUATOR IMPACT PLATE & CYLINDER DETAILS

Surveyed	CHECKED BY	DATE
Plotted		
Checked		
Field Notes		
Topographic Notes		
PLAN	BY	DATE
NO. 1		
NO. 2		
NO. 3		
NO. 4		
NO. 5		
NO. 6		
NO. 7		
NO. 8		
NO. 9		
NO. 10		
NO. 11		
NO. 12		
NO. 13		
NO. 14		
NO. 15		
NO. 16		
NO. 17		
NO. 18		
NO. 19		
NO. 20		
NO. 21		
NO. 22		
NO. 23		
NO. 24		
NO. 25		
NO. 26		