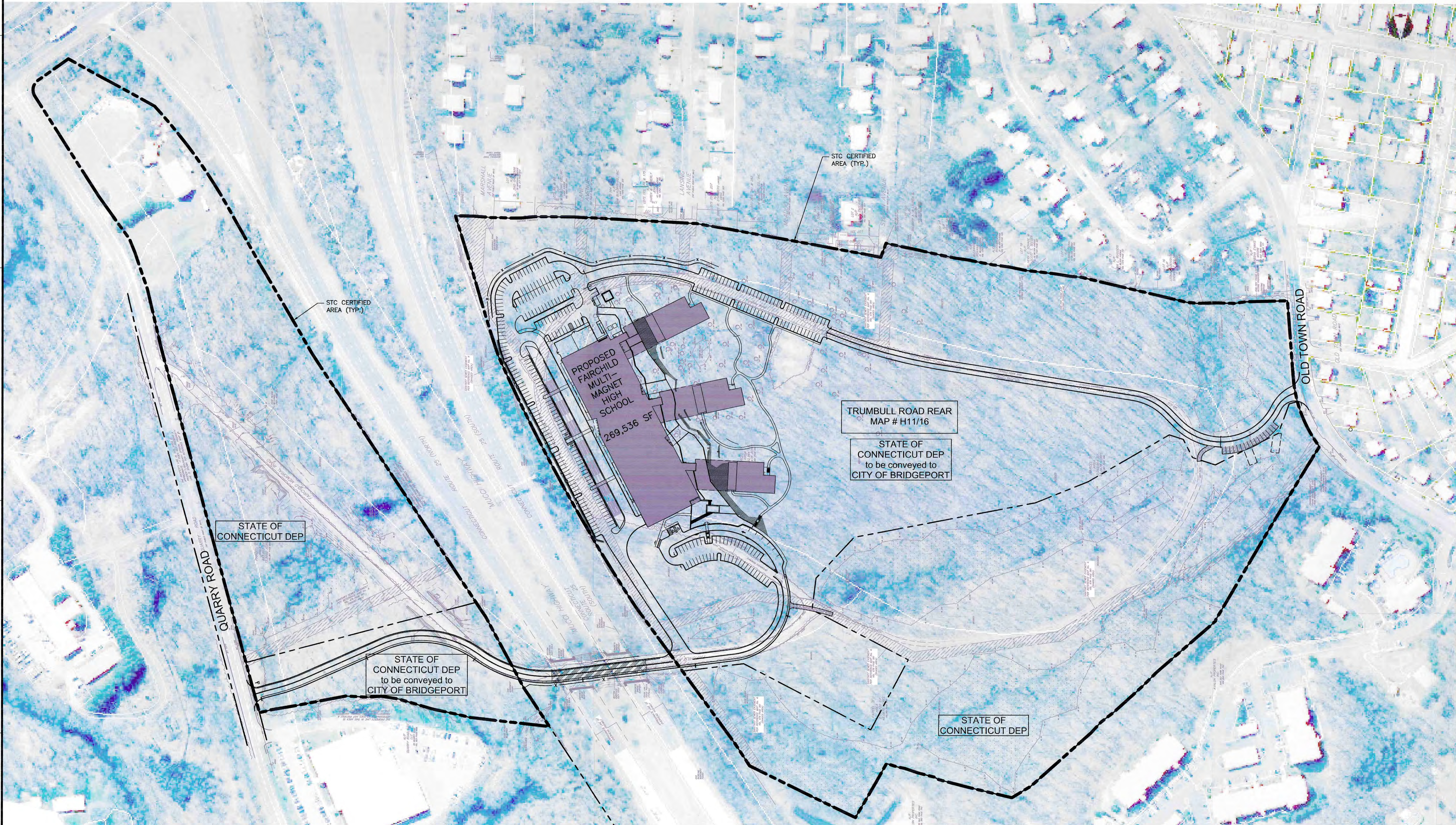
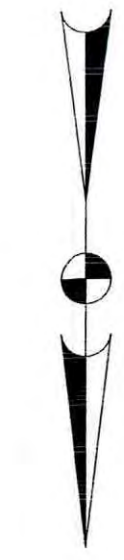


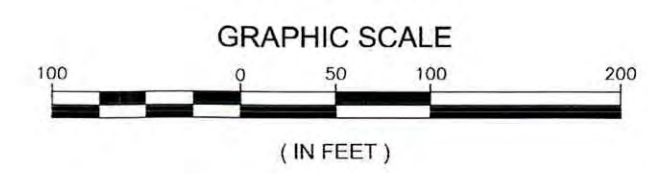
PARKING = 469 TOTAL (146 IN GARAGE / 323 ON SITE)

SUBURBAN HIGH SCHOOL AVERAGE PARKING DEMAND ON A WEEKDAY = 0.23 TO 0.31 VEHICLES PER STUDENT. 1,500 STUDENTS ANTICIPATED AT 0.31 VEHICLES PER STUDENT = 465 PARKING SPACES REQUIRED.



SEE SHEETS C-701 AND C-702 FOR SITE DRIVEWAY VEHICLE SITE LINES AND TURNING MOVEMENTS FOR QUARRY ROAD AND OLD TOWN ROAD

STC APPROVED PLAN JUN 21 2011



REVISIONS:	DATE
REVISED PER STC COMMENTS	3/23/10
REVISED PER STC COMMENTS	4/08/10
REVISED PER STC COMMENTS	5/04/10
REVISED PER STC COMMENTS	6/14/10

- CONSULTANTS:**
- PROGRAM MANAGEMENT**  
O&G INDUSTRIES, INC.  
203.576.7884
  - CIVIL / STRUCTURAL ENGINEER**  
DIVERSIFIED TECHNOLOGY CONSULTANTS  
203.238.4200
  - LANDSCAPE ARCHITECT**  
FERRERO HIXON ASSOCIATES, LLC  
860.658.0466
  - MECH./ELEC./PLUMBING/P ENGINEERS**  
DIVERSIFIED TECHNOLOGY CONSULTANTS  
203.238.4200
  - TECHNOLOGY CONSULTANT**  
CCR PYRAMID, INC.  
781.943.4400
  - LEED CONSULTANT**  
STEVEN WINTER ASSOCIATES, INC.  
203.857.0200
  - HARDWARE CONSULTANT**  
P.H. HAWLEY ASSOCIATES LLC  
203.237.7144
  - ACOUSTICIAN**  
ACENTECH INC.  
817.499.8970
  - SECURITY CONSULTANT**  
DUCIBELLA, VENTER & SANTORE  
203.288.6466
  - FOOD SERVICE CONSULTANT**  
CRABTREE McGRATH ASSOCIATES, INC  
978.762.6464

# FAIRCHILD WHEELER MULTI-MAGNET HIGH SCHOOL



State Project No. 015-0159 MAD/W  
**RECEIVED**  
JUN 10 2011  
STATE TRAFFIC COMMISSION

REGULATORY SUBMISSION  
DECEMBER 29, 2009

**JCJ ARCHITECTURE**  
JCJ Architecture, Inc.  
38 Prospect Street  
Hartford, CT 06103



P.I.C. \_\_\_\_\_  
P.M. \_\_\_\_\_  
D.T.L. \_\_\_\_\_

ISSUE 12/29/2009  
JOB H06060.00  
DRAWN SG  
SCALE 1"=100'

OVERALL SITE LAYOUT PLAN