

The copies of the pilot study print materials are organized as follows:

- Gift Card Segment – Pre-notice Postcard (2 Pages)
- Gift Card Segment – Invitation Packet Envelope (1 Page)
- Gift Card Segment – Invitation Letter (2 Pages)
- Gift Card Segment – Travel Log (2 Pages)
- Paper Segment – Reminder Postcard (2 Pages)
- Paper Segment – Pre-notice Postcard (2 Pages)
- Paper Segment – Invitation Packet Envelope (1 Page)
- Paper Segment – Invitation Letter (2 Pages)
- Paper Segment – Travel Log (2 Pages)
- Paper Segment – Diary Log Mailing Packet Envelope (1 Page)
- Paper Segment – Diary Log Cover Letter (2 Pages)
- Paper Segment – Diary Log (10 Pages)
- Raffle Segment – Reminder Postcard (2 Pages)
- Raffle Segment – Pre-notice Postcard (2 Pages)
- Raffle Segment – Invitation Packet Envelope (1 Page)
- Raffle Segment – Invitation Letter (2 Pages)
- Raffle Segment – Travel Log (2 Pages)
- Raffle Segment – Reminder Postcard (2 Pages)

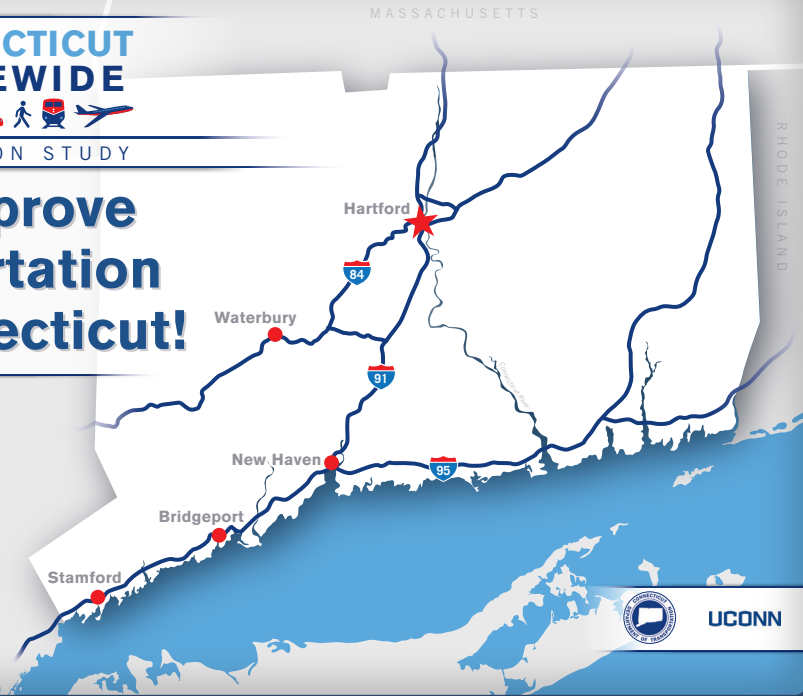


# CONNECTICUT STATEWIDE



TRANSPORTATION STUDY

## Help improve transportation in Connecticut!





Connecticut Transportation Institute  
 270 Middle Turnpike, Unit 5202, Storrs, CT 06269-5202

**In a few days, you will receive an invitation packet in the mail to participate in an important transportation study.**

FIRST-CLASS MAIL  
 U.S. POSTAGE  
 PAID  
 STORRS, CT  
 PERMIT NO 36

The Connecticut Department of Transportation and the Connecticut Transportation Institute at UCONN are performing this study to better understand the travel behaviors and transportation needs of Connecticut residents. The information collected in this study will help improve the transportation system and prioritize future transportation improvements in the state of Connecticut.

You are one of the few households randomly selected to participate in the study and your participation will have a significant impact. The information you provide will be kept confidential and will only be used for transportation planning purposes without disclosing identifiable information. **As thanks for your participation, your household will receive a \$10 gift card from your choice of either Walmart or Amazon.com after completing the survey.**

To start now, go to the secure study website with your password: <https://cttransportationstudy.org>

Or call toll-free: 1-844-872-2562

**?** Questions? Email: [help@cttransportationstudy.org](mailto:help@cttransportationstudy.org)

*Lo invitamos a compartir sus experiencias de traslado en su región.  
 Para participar, llame sin costo: 1-844-872-2562*





**CONNECTICUT  
TRANSPORTATION  
INSTITUTE**  
270 Middle Turnpike, Unit 5202  
Storrs, CT 06269-5202

FIRST-CLASS MAIL  
U.S. POSTAGE  
PAID  
STORRS, CT  
PERMIT NO 36

**Help improve the future of transportation in  
Connecticut by participating in this important study!**





# STATE OF CONNECTICUT

## DEPARTMENT OF TRANSPORTATION



2800 BERLIN TURNPIKE, P.O. BOX 317546  
NEWINGTON, CONNECTICUT 06131-7546

<Letter Date>

<First and last name/City name resident  
Street Address 1  
Street Address 2  
City, CT #####>

Dear <First and last name/City name resident>

I'm asking you to help us improve our state's transportation system by participating in the Connecticut Statewide Transportation Study. Your input will help the Connecticut Department of Transportation to better plan and prioritize future transportation improvements. Yours is one of the few households randomly selected to participate in this study. The information you provide will have a significant impact on transportation planning in the state and in your community. As thanks for your time, your household will receive a **\$10 gift card from your choice of either Walmart or Amazon.com** after completing the survey.

### PARTICIPATION IN THE STUDY IS A SIMPLE THREE STEP PROCESS:

#### STEP 1: Briefly tell us about your household. You can do this now.

Log on to the secure website using your password:  
Study website: <https://cttransportationstudy.org>  
Password:

Or, participate over the phone by calling toll-free:  
**1-844-872-2562**  
▪ Monday-Friday: 9AM – 8PM EST  
▪ Saturday: 10AM – 4PM EST

Or leave us a message with the best time and number for us to call you.

**STEP 2: Track your trips on** <travel date>. We ask that each member of your household keep track of every trip they make that day, using the enclosed Travel Logs to help remember the details of each trip.

**STEP 3: Tell us about your travels.** Just like Step 1, return to the survey website with your password or call us to report the trips you made on <travel date>. We will also ask a few questions about your household's typical travel habits.

That's all it takes to help us with this critical study!

**Your privacy will be protected** and your name and address will never be linked to the survey form. All information will be kept confidential and will only be used for transportation planning purposes without disclosing identifiable information. Please refer to the study website for our privacy policy.

For more details about this study, please see the back of this letter for answers to Frequently Asked Questions. You can also email [help@cttransportationstudy.org](mailto:help@cttransportationstudy.org) or call **1-844-872-2562**.

Thank you in advance for your important contribution to improving transportation in Connecticut.

Sincerely,

Thomas Maziarz  
Bureau Chief, Bureau of Policy and Planning  
Connecticut Department of Transportation

*Lo invitamos a compartir sus experiencias de traslado en su región. Para participar, llame sin costo: 1-844-872-2562*



UConn



## FREQUENTLY ASKED QUESTIONS

SECURE STUDY WEBSITE: <https://cttransportationstudy.org>  
 EMAIL: [help@cttransportationstudy.org](mailto:help@cttransportationstudy.org)  
 TOLL-FREE TELEPHONE: 1-844-872-2562

*Lo invitamos a compartir sus experiencias de traslado en su región. Para participar, llame sin costo: 1-844-872-2562*

### GENERAL INFORMATION

**What is the Connecticut Statewide Transportation Study all about?** The study is collecting information about everyday travel behavior of residents in the state of Connecticut including how we travel, where we go, why we travel, how long it takes, etc.

**How was I selected to participate?** Invited households (like yours) were randomly selected from all the residential addresses in the state. The random approach helps us understand the travel needs of all types of households from different regions in the state.

**Why should I participate?** Current data about residents' travel characteristics helps the state understand and plan for current and future transportation needs. It also helps local agencies plan for transportation improvements in your communities. Your responses have a large impact because yours is one of a small number of households invited to participate in the study.

**My travel on the date assigned to me isn't "typical" – should I still participate?** Yes. This study aims to collect travel information on the date assigned to you even if it is not a "typical" travel day. We will separately ask you a few questions about your usual travel habits.

**I don't travel very much – should I still participate?** Yes. Whether you make a lot of trips or don't go anywhere at all, please report what actually happens on your assigned travel date. In addition to driving, we also want to know about any trips you make by walking, biking, riding transit, or any other mode of transportation.

**Who is sponsoring this study?** This study is sponsored by Connecticut Department of Transportation in partnership with Connecticut Transportation Institute at UCONN.

**What are my rights as a participant?** You do not have to be in this study if you do not want to. If you agree to be in the study, but later change your mind, you may drop out at any time. There are no penalties or consequences of any kind if you decide that you do not want to participate, though you will not receive compensation. We will be happy to answer any questions you have about this study. If you have further questions about this project or if you have a research-related problem, you may contact the principal investigator, Dr. Karthik Charan Konduri at [kkonduri@engr.uconn.edu](mailto:kkonduri@engr.uconn.edu). If you have any questions concerning your rights as a research subject, you may contact the University of Connecticut Institutional Review Board (IRB) at 860-486-8802. The IRB is a group of people who review research studies to protect the rights and welfare of research participants. This protocol has been approved by the UConn IRB, Protocol #H15-307.

**What will I get for participating?** As thanks for your time, your household will receive a \$10 gift card from your choice of either Amazon.com or Walmart within 10 business days after every person in your household completes the survey.

### TAKING THE SURVEY

**What do I use the "Travel Log" for?** The "Travel Log" can be used to keep track of the details of your trips on the assigned travel date.

**Why is my household assigned a specific travel date?** We are asking for information about the travel made by each person in your household on one chosen weekday. We call this your "travel day" or "travel date". This helps us develop a full picture of all the travel that happens across the region and the state on each weekday (even if it is not a "typical" travel day).

**What is a trip?** A trip is any time you travel from one location and stop at a new location. Even if you stop briefly for gas, at an ATM, or to drop a child off at school, travel to that stop counts as one trip, and travel from that stop to the next place counts as a separate trip. If you go out and return to the same place without stopping (such as a jog, bike ride, or leisurely drive) then this counts as two trips: from the starting location to the furthest point you reach, and the trip back to your starting point.

**What are some examples of trips?** See below for some common trips that people make:

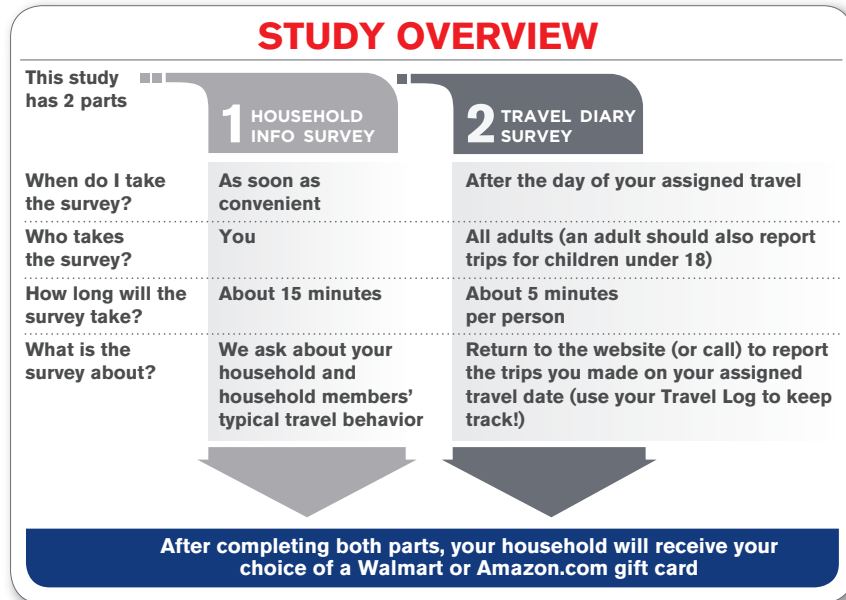
- Drive to work
- Drop your child off at school
- Walk the dog
- Bike to the grocery store
- Walk to the bus stop and then ride the bus to the bank
- Carpool to a meeting in New York

Often what we think of as one trip may actually be a chain of several trips. For example, "I picked up my child and stopped to buy gas on my way home from work" counts as three trips: 1) a trip from work to your child's activity, 2) a trip from your child's activity to the gas station, and 3) the trip home.

**Should my children participate?** Yes, trips to and from school, sports practice, play dates, and other activities help us understand the full nature of how the transportation system is used, and how it can be improved.

**Who should be counted as a member of my household?** Everyone who lives in your dwelling unit and shares the kitchen is a part of your household, including family and non-family members.

### STUDY OVERVIEW



**TRAVEL LOG INSTRUCTIONS**

SECURE STUDY WEBSITE: <https://cttransportationstudy.org>  
 TOLL-FREE TELEPHONE: 1-844-872-2562

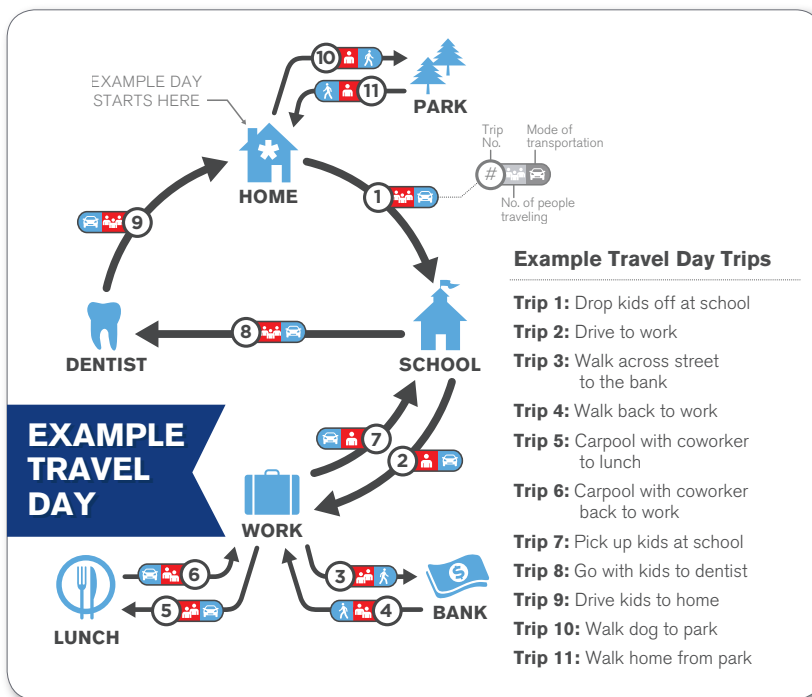
**STEP 1: On your assigned travel day:**

Each adult (age 18 or older) in your household should take this Travel Log with them and note each trip made. Note: Your travel day begins at 3AM on your assigned day and ends 24 hours later. For many people, the first trip begins when they leave home in the morning.

**STEP 2: After you complete your travel for the day:**

Have your password ready (from the invitation letter) and call us or log on to the secure study website to record all your logged trips. Adults should also report all trips for children (under age 18) in the household.

**What is a trip?** A trip is any time you travel from one location and stop at a new location. Even if you stop briefly for gas, at an ATM, or to drop a child off at school, travel to that stop counts as one trip, and travel from that stop to the next place counts as a separate trip. If you go out and return to the same place without stopping (such as a jog, bike ride, or leisurely drive) then this counts as two trips: from the starting location to the furthest point you reach, and the trip back to your starting point.



**TRAVEL LOG INSTRUCTIONS**

SECURE STUDY WEBSITE: <https://cttransportationstudy.org>  
 TOLL-FREE TELEPHONE: 1-844-872-2562

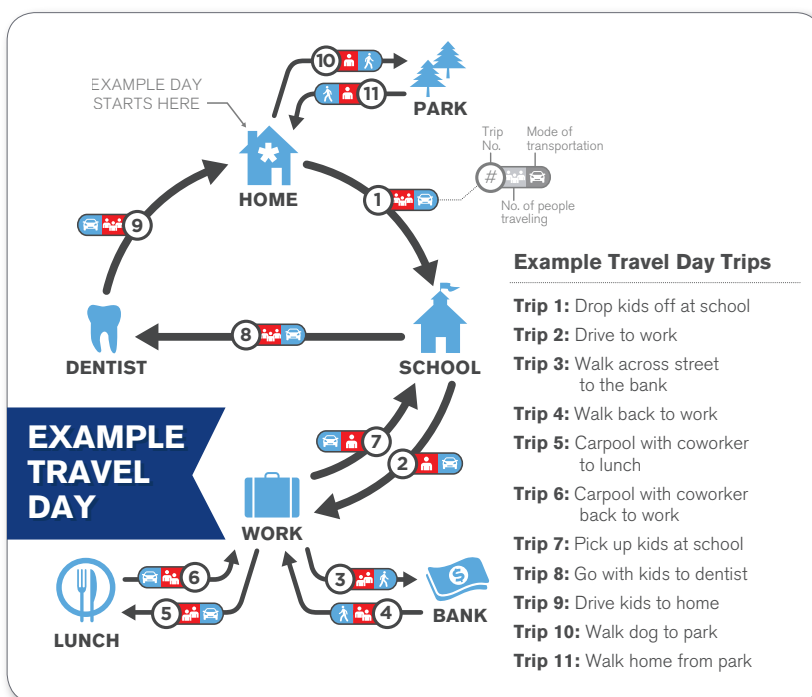
**STEP 1: On your assigned travel day:**

Each adult (age 18 or older) in your household should take this Travel Log with them and note each trip made. Note: Your travel day begins at 3AM on your assigned day and ends 24 hours later. For many people, the first trip begins when they leave home in the morning.

**STEP 2: After you complete your travel for the day:**

Have your password ready (from the invitation letter) and call us or log on to the secure study website to record all your logged trips. Adults should also report all trips for children (under age 18) in the household.

**What is a trip?** A trip is any time you travel from one location and stop at a new location. Even if you stop briefly for gas, at an ATM, or to drop a child off at school, travel to that stop counts as one trip, and travel from that stop to the next place counts as a separate trip. If you go out and return to the same place without stopping (such as a jog, bike ride, or leisurely drive) then this counts as two trips: from the starting location to the furthest point you reach, and the trip back to your starting point.





## TRAVEL LOG

SECURE STUDY WEBSITE:  
<https://cttransportationstudy.org>  
 TOLL-FREE TELEPHONE:  
**1-844-872-2562**

Name

Travel Date

Password

	When did your trip...		Where did you go?		Traveled by: 	Traveled with: 
	Start	End	Description	Address, Intersection, or Business Name		
Example	7:05AM	7:20AM	Drop kids at school	West Middle Elementary School, Hartford	Car	Grace, Sophie
Example	7:25AM	7:45AM	Drive to work	550 Main St, Hartford	Car	N/A
1st Trip						
2nd Trip						
3rd Trip						
4th Trip						
5th Trip						
6th Trip						
7th Trip						
8th Trip						
9th Trip						
10th Trip						

▪ Include ALL trips you made on your travel day, even short stops such as stopping for gas or picking up coffee

▪ Include only the time spent traveling when listing your 'start' and 'end' times. Do not include any time spent at the location



Questions?

TOLL-FREE TELEPHONE:

**1-844-872-2562**

EMAIL:

[help@cttransportationstudy.org](mailto:help@cttransportationstudy.org)

*This sheet is for your use only. We do not need you to return this form. If you have questions, please email: [help@cttransportationstudy.org](mailto:help@cttransportationstudy.org)*



## TRAVEL LOG

SECURE STUDY WEBSITE:  
<https://cttransportationstudy.org>  
 TOLL-FREE TELEPHONE:  
**1-844-872-2562**

Name

Travel Date

Password

	When did your trip...		Where did you go?		Traveled by: 	Traveled with: 
	Start	End	Description	Address, Intersection, or Business Name		
Example	7:05AM	7:20AM	Drop kids at school	West Middle Elementary School, Hartford	Car	Grace, Sophie
Example	7:25AM	7:45AM	Drive to work	550 Main St, Hartford	Car	N/A
1st Trip						
2nd Trip						
3rd Trip						
4th Trip						
5th Trip						
6th Trip						
7th Trip						
8th Trip						
9th Trip						
10th Trip						

▪ Include ALL trips you made on your travel day, even short stops such as stopping for gas or picking up coffee

▪ Include only the time spent traveling when listing your 'start' and 'end' times. Do not include any time spent at the location



Questions?

TOLL-FREE TELEPHONE:

**1-844-872-2562**

EMAIL:

[help@cttransportationstudy.org](mailto:help@cttransportationstudy.org)

*This sheet is for your use only. We do not need you to return this form. If you have questions, please email: [help@cttransportationstudy.org](mailto:help@cttransportationstudy.org)*





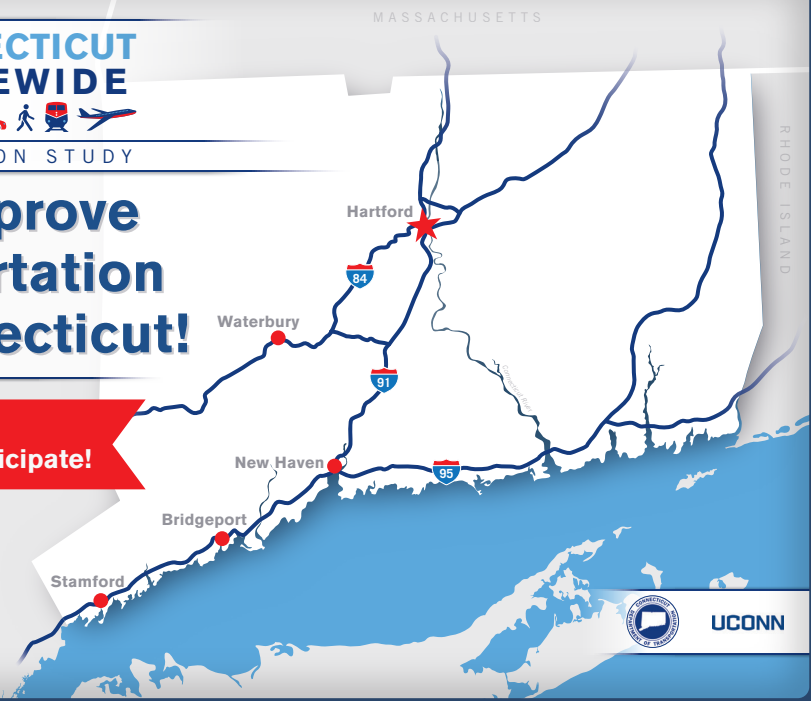
# CONNECTICUT STATEWIDE



TRANSPORTATION STUDY

# Help improve transportation in Connecticut!

**REMINDER:**  
You can still participate!



UConn





Connecticut Transportation Institute  
270 Middle Turnpike, Unit 5202, Storrs, CT 06269-5202

**We recently mailed you an invitation to participate in the Connecticut Statewide Transportation Study.**

FIRST-CLASS MAIL  
U.S. POSTAGE  
PAID  
STORRS, CT  
PERMIT NO 36

If you have already started completing the survey, **thank you!**  
If not, you still have time and participation is easy – please see the instructions below to get started.

Please tell us about your travels on: **<travel date>**

To participate, go online and enter your password: **<https://cttransportationstudy.org>**

**<password>**

Or call toll-free: **1-844-872-2562**

**Remember, your input is important!** Your participation will help the Connecticut Department of Transportation plan and prioritize future transportation improvements in the state.

As thanks for your participation, your household will receive a **\$10 gift card from your choice of either Walmart or Amazon.com** after completing the survey.

**?** Questions? Email: **[help@cttransportationstudy.org](mailto:help@cttransportationstudy.org)**

*Lo invitamos a compartir sus experiencias de traslado en su región.  
Para participar, llame sin costo: 1-844-872-2562*



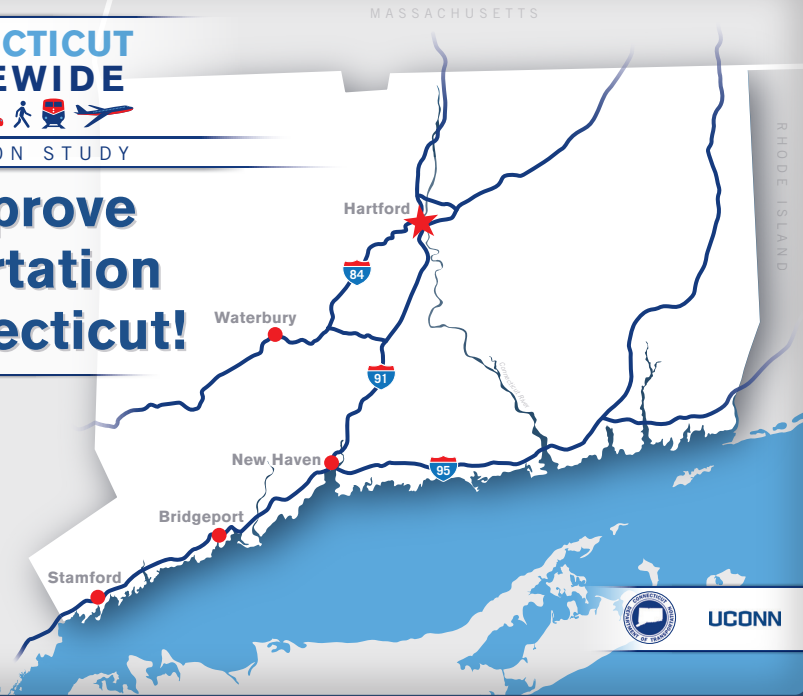


# CONNECTICUT STATEWIDE



TRANSPORTATION STUDY

## Help improve transportation in Connecticut!





Connecticut Transportation Institute  
270 Middle Turnpike, Unit 5202, Storrs, CT 06269-5202

**In a few days, you will receive an invitation packet in the mail to participate in an important transportation study.**

The Connecticut Department of Transportation and the Connecticut Transportation Institute at UCONN are performing this study to better understand the travel behaviors and transportation needs of Connecticut residents. The information collected in this study will help improve the transportation system and prioritize future transportation improvements in the state of Connecticut.

You are one of the few households randomly selected to participate in the study and your participation will have a significant impact. The information you provide will be kept confidential and will only be used for transportation planning purposes without disclosing identifiable information. **As thanks for your participation, your household will be entered into a drawing for an Apple iPad** after completing the survey.

To start now, go to the secure study website with your password: <https://cttransportationstudy.org>

<password>

Or call toll-free: 1-844-872-2562

**?** Questions? Email: [help@cttransportationstudy.org](mailto:help@cttransportationstudy.org)

*Lo invitamos a compartir sus experiencias de traslado en su región.  
Para participar, llame sin costo: 1-844-872-2562*

FIRST-CLASS MAIL  
U.S. POSTAGE  
PAID  
STORRS, CT  
PERMIT NO 36





**CONNECTICUT  
TRANSPORTATION  
INSTITUTE**  
270 Middle Turnpike, Unit 5202  
Storrs, CT 06269-5202

FIRST-CLASS MAIL  
U.S. POSTAGE  
PAID  
STORRS, CT  
PERMIT NO 36



**Help improve the future of transportation in  
Connecticut by participating in this important study!**





# STATE OF CONNECTICUT

## DEPARTMENT OF TRANSPORTATION



2800 BERLIN TURNPIKE, P.O. BOX 317546  
NEWINGTON, CONNECTICUT 06131-7546

<Letter Date>

<First and last name/City name resident  
Street Address 1  
Street Address 2  
City, CT #####>

Dear <First and last name/City name resident>

I'm asking you to help us improve our state's transportation system by participating in the Connecticut Statewide Transportation Study. Your input will help the Connecticut Department of Transportation to better plan and prioritize future transportation improvements. Yours is one of the few households randomly selected to participate in this study. The information you provide will have a significant impact on transportation planning in the state and in your community. As thanks for your time, **your household will be entered into a drawing for an Apple iPad** after completing the survey.

### PARTICIPATION IN THE STUDY IS A SIMPLE THREE STEP PROCESS:

#### STEP 1: Briefly tell us about your household. You can do this now.



Log on to the secure website using your password:

Study website: <https://cttransportationstudy.org>

Password:

<password>



Or, participate over the phone by calling toll-free:

**1-844-872-2562**

- Monday-Friday: 9AM – 8PM EST
- Saturday: 10AM – 4PM EST

*Or leave us a message with the best time and number for us to call you.*

**STEP 2: Track your trips on** <travel date> . We ask that each member of your household keep track of every trip they make that day.

**STEP 3: Tell us about your travels.** We will mail you a travel survey for you to report your trips on your assigned travel date. To report the trips you made on <travel date> , you can return the survey to us by mail, you can return to the survey website with your password, or call us. We will also ask a few questions about your household's typical travel habits.

That's all it takes to help us with this critical study!

**Your privacy will be protected** and your name and address will never be linked to the survey form. All information will be kept confidential and will only be used for transportation planning purposes without disclosing identifiable information. Please refer to the study website for our privacy policy.

For more details about this study, please see the back of this letter for answers to Frequently Asked Questions. You can also email [help@cttransportationstudy.org](mailto:help@cttransportationstudy.org) or call **1-844-872-2562**.

Thank you in advance for your important contribution to improving transportation in Connecticut.

Sincerely,

Thomas Maziarz  
Bureau Chief, Bureau of Policy and Planning  
Connecticut Department of Transportation

*Lo invitamos a compartir sus experiencias de traslado en su región. Para participar, llame sin costo: 1-844-872-2562*



UConn





## FREQUENTLY ASKED QUESTIONS

SECURE STUDY WEBSITE: <https://cttransportationstudy.org>  
 EMAIL: [help@cttransportationstudy.org](mailto:help@cttransportationstudy.org)  
 TOLL-FREE TELEPHONE: 1-844-872-2562

*Lo invitamos a compartir sus experiencias de traslado en su región. Para participar, llame sin costo: 1-844-872-2562*

### GENERAL INFORMATION

**What is the Connecticut Statewide Transportation Study all about?** The study is collecting information about everyday travel behavior of residents in the state of Connecticut including how we travel, where we go, why we travel, how long it takes, etc.

**How was I selected to participate?** Invited households (like yours) were randomly selected from all the residential addresses in the state. The random approach helps us understand the travel needs of all types of households from different regions in the state.

**Why should I participate?** Current data about residents' travel characteristics helps the state understand and plan for current and future transportation needs. It also helps local agencies plan for transportation improvements in your communities. Your responses have a large impact because yours is one of a small number of households invited to participate in the study.

**My travel on the date assigned to me isn't "typical" – should I still participate?** Yes. This study aims to collect travel information on the date assigned to you even if it is not a "typical" travel day. We will separately ask you a few questions about your usual travel habits.

**I don't travel very much – should I still participate?** Yes. Whether you make a lot of trips or don't go anywhere at all, please report what actually happens on your assigned travel date. In addition to driving, we also want to know about any trips you make by walking, biking, riding transit, or any other mode of transportation.

**Who is sponsoring this study?** This study is sponsored by Connecticut Department of Transportation in partnership with Connecticut Transportation Institute at UCONN.

**What are my rights as a participant?** You do not have to be in this study if you do not want to. If you agree to be in the study, but later change your mind, you may drop out at any time. There are no penalties or consequences of any kind if you decide that you do not want to participate, though you will not receive compensation. We will be happy to answer any questions you have about this study. If you have further questions about this project or if you have a research-related problem, you may contact the principal investigator, Dr. Karthik Charan Konduri at [kkonduri@engr.uconn.edu](mailto:kkonduri@engr.uconn.edu). If you have any questions concerning your rights as a research subject, you may contact the University of Connecticut Institutional Review Board (IRB) at 860-486-8802. The IRB is a group of people who review research studies to protect the rights and welfare of research participants. This protocol has been approved by the UConn IRB, Protocol #H15-307.

**What will I get for participating?** As thanks for your time, your household will be entered into a drawing for an Apple iPad after every person in your household completes the survey.

### TAKING THE SURVEY

**Why is my household assigned a specific travel date?** We are asking for information about the travel made by each person in your household on one chosen weekday. We call this your "travel day" or "travel date". This helps us develop a full picture of all the travel that happens across the region and the state on each weekday (even if it is not a "typical" travel day).

**What is a trip?** A trip is any time you travel from one location and stop at a new location. Even if you stop briefly for gas, at an ATM, or to drop a child off at school, travel to that stop counts as one trip, and travel from that stop to the next place counts as a separate trip. If you go out and return to the same place without stopping (such as a jog, bike ride, or leisurely drive) then this counts as two trips: from the starting location to the furthest point you reach, and the trip back to your starting point.

**What are some examples of trips?** See below for some common trips that people make:

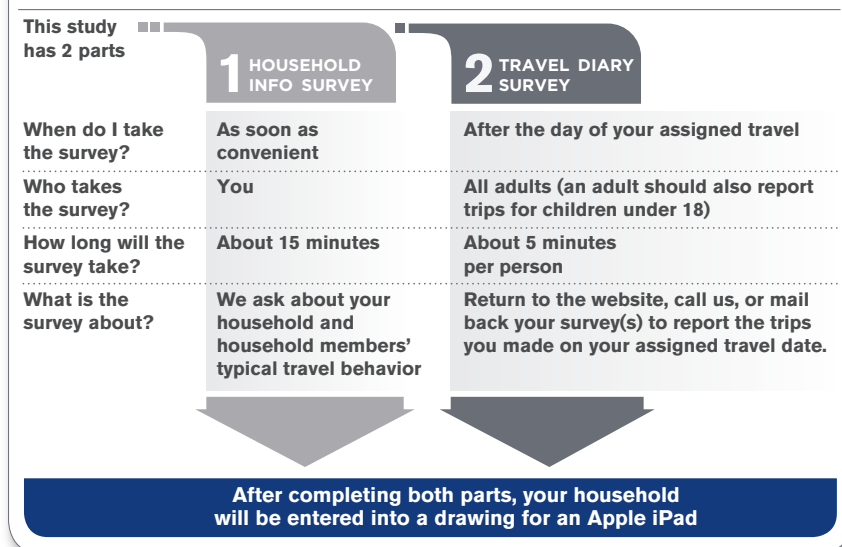
- Drive to work
- Drop your child off at school
- Walk the dog
- Bike to the grocery store
- Walk to the bus stop and then ride the bus to the bank
- Carpool to a meeting in New York

Often what we think of as one trip may actually be a chain of several trips. For example, "I picked up my child and stopped to buy gas on my way home from work" counts as three trips: 1) a trip from work to your child's activity, 2) a trip from your child's activity to the gas station, and 3) the trip home.

**Should my children participate?** Yes, trips to and from school, sports practice, play dates, and other activities help us understand the full nature of how the transportation system is used, and how it can be improved.

**Who should be counted as a member of my household?** Everyone who lives in your dwelling unit and shares the kitchen is a part of your household, including family and non-family members.

### STUDY OVERVIEW



**TRAVEL LOG INSTRUCTIONS**

SECURE STUDY WEBSITE: <https://cttransportationstudy.org>  
 TOLL-FREE TELEPHONE: 1-844-872-2562

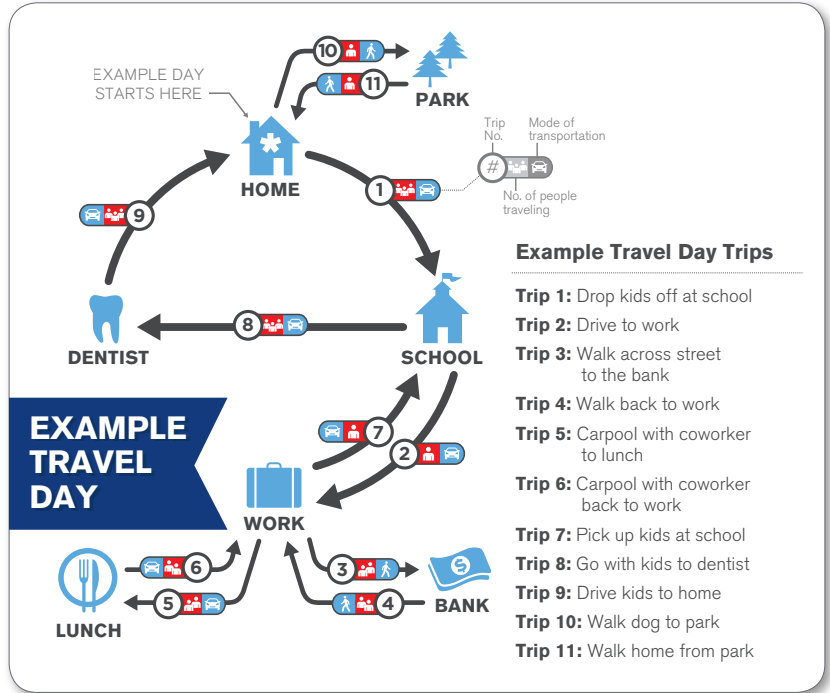
**STEP 1: On your assigned travel day:**

Each adult (age 18 or older) in your household should take this Travel Log with them and note each trip made. Note: Your travel day begins at 3AM on your assigned day and ends 24 hours later. For many people, the first trip begins when they leave home in the morning.

**STEP 2: After you complete your travel for the day:**

Have your password ready (from the invitation letter) and call us or log on to the secure study website to record all your logged trips. Adults should also report all trips for children (under age 18) in the household.

**What is a trip?** A trip is any time you travel from one location and stop at a new location. Even if you stop briefly for gas, at an ATM, or to drop a child off at school, travel to that stop counts as one trip, and travel from that stop to the next place counts as a separate trip. If you go out and return to the same place without stopping (such as a jog, bike ride, or leisurely drive) then this counts as two trips: from the starting location to the furthest point you reach, and the trip back to your starting point.



**Example Travel Day Trips**

- Trip 1:** Drop kids off at school
- Trip 2:** Drive to work
- Trip 3:** Walk across street to the bank
- Trip 4:** Walk back to work
- Trip 5:** Carpool with coworker to lunch
- Trip 6:** Carpool with coworker back to work
- Trip 7:** Pick up kids at school
- Trip 8:** Go with kids to dentist
- Trip 9:** Drive kids to home
- Trip 10:** Walk dog to park
- Trip 11:** Walk home from park

**TRAVEL LOG INSTRUCTIONS**

SECURE STUDY WEBSITE: <https://cttransportationstudy.org>  
 TOLL-FREE TELEPHONE: 1-844-872-2562

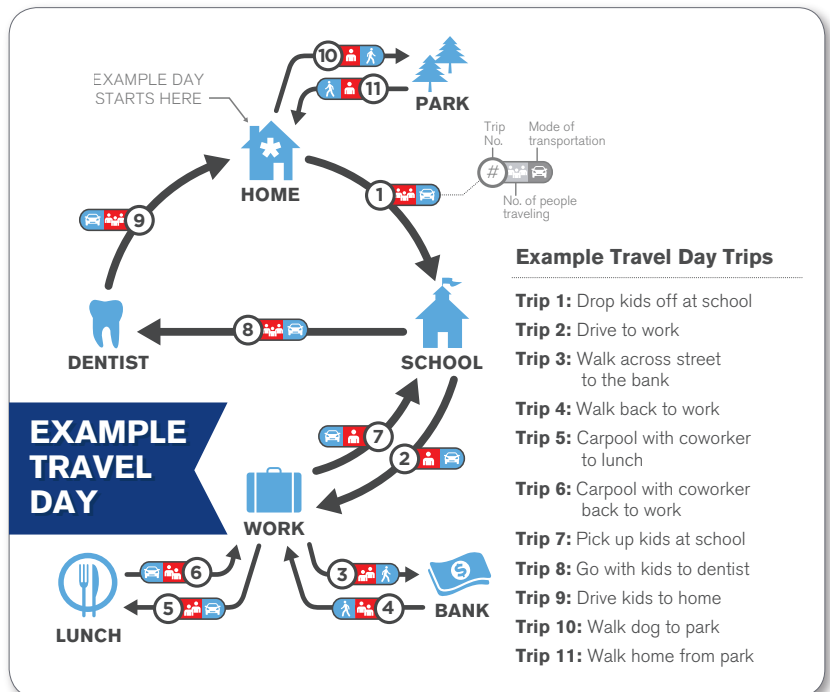
**STEP 1: On your assigned travel day:**

Each adult (age 18 or older) in your household should take this Travel Log with them and note each trip made. Note: Your travel day begins at 3AM on your assigned day and ends 24 hours later. For many people, the first trip begins when they leave home in the morning.

**STEP 2: After you complete your travel for the day:**

Have your password ready (from the invitation letter) and call us or log on to the secure study website to record all your logged trips. Adults should also report all trips for children (under age 18) in the household.

**What is a trip?** A trip is any time you travel from one location and stop at a new location. Even if you stop briefly for gas, at an ATM, or to drop a child off at school, travel to that stop counts as one trip, and travel from that stop to the next place counts as a separate trip. If you go out and return to the same place without stopping (such as a jog, bike ride, or leisurely drive) then this counts as two trips: from the starting location to the furthest point you reach, and the trip back to your starting point.



**Example Travel Day Trips**

- Trip 1:** Drop kids off at school
- Trip 2:** Drive to work
- Trip 3:** Walk across street to the bank
- Trip 4:** Walk back to work
- Trip 5:** Carpool with coworker to lunch
- Trip 6:** Carpool with coworker back to work
- Trip 7:** Pick up kids at school
- Trip 8:** Go with kids to dentist
- Trip 9:** Drive kids to home
- Trip 10:** Walk dog to park
- Trip 11:** Walk home from park





## TRAVEL LOG

SECURE STUDY WEBSITE:  
<https://cttransportationstudy.org>  
 TOLL-FREE TELEPHONE:  
**1-844-872-2562**

Name

Travel Date

Password

	When did your trip...		Where did you go?		Traveled by: 	Traveled with: 
	Start	End	Description	Address, Intersection, or Business Name		
Example	7:05AM	7:20AM	Drop kids at school	West Middle Elementary School, Hartford	Car	Grace, Sophie
Example	7:25AM	7:45AM	Drive to work	550 Main St, Hartford	Car	N/A
1st Trip						
2nd Trip						
3rd Trip						
4th Trip						
5th Trip						
6th Trip						
7th Trip						
8th Trip						
9th Trip						
10th Trip						

- Include ALL trips you made on your travel day, even short stops such as stopping for gas or picking up coffee
- Include only the time spent traveling when listing your 'start' and 'end' times. Do not include any time spent at the location



**Questions?**

TOLL-FREE TELEPHONE:  
**1-844-872-2562**

EMAIL:  
[help@cttransportationstudy.org](mailto:help@cttransportationstudy.org)

*This sheet is for your use only. We do not need you to return this form.  
 If you have questions, please email: [help@cttransportationstudy.org](mailto:help@cttransportationstudy.org)*



## TRAVEL LOG

SECURE STUDY WEBSITE:  
<https://cttransportationstudy.org>  
 TOLL-FREE TELEPHONE:  
**1-844-872-2562**

Name

Travel Date

Password

	When did your trip...		Where did you go?		Traveled by: 	Traveled with: 
	Start	End	Description	Address, Intersection, or Business Name		
Example	7:05AM	7:20AM	Drop kids at school	West Middle Elementary School, Hartford	Car	Grace, Sophie
Example	7:25AM	7:45AM	Drive to work	550 Main St, Hartford	Car	N/A
1st Trip						
2nd Trip						
3rd Trip						
4th Trip						
5th Trip						
6th Trip						
7th Trip						
8th Trip						
9th Trip						
10th Trip						

- Include ALL trips you made on your travel day, even short stops such as stopping for gas or picking up coffee
- Include only the time spent traveling when listing your 'start' and 'end' times. Do not include any time spent at the location



**Questions?**

TOLL-FREE TELEPHONE:  
**1-844-872-2562**

EMAIL:  
[help@cttransportationstudy.org](mailto:help@cttransportationstudy.org)

*This sheet is for your use only. We do not need you to return this form.  
 If you have questions, please email: [help@cttransportationstudy.org](mailto:help@cttransportationstudy.org)*



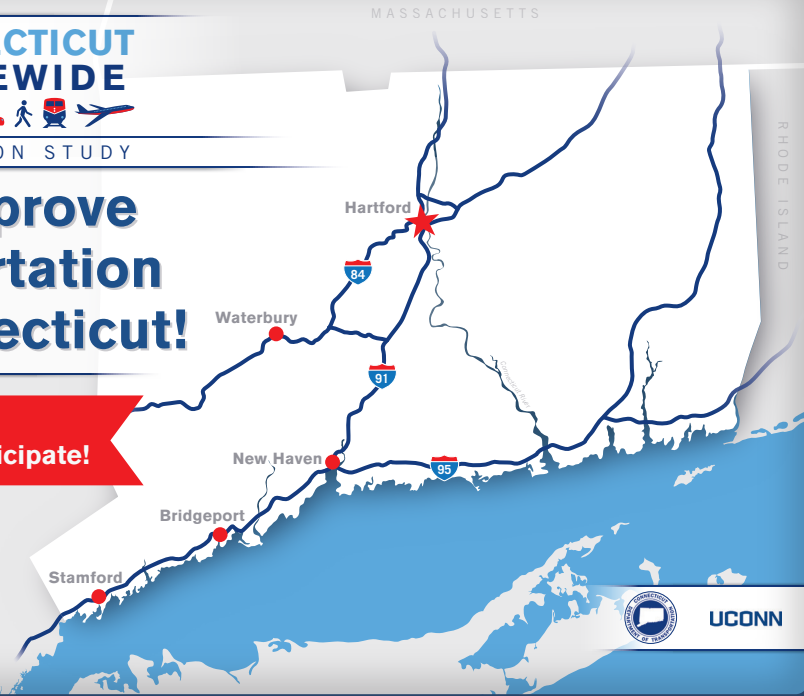
# CONNECTICUT STATEWIDE



TRANSPORTATION STUDY

## Help improve transportation in Connecticut!

**REMINDER:  
You can still participate!**



UConn





Connecticut Transportation Institute  
270 Middle Turnpike, Unit 5202, Storrs, CT 06269-5202

**We recently mailed you an invitation to participate in the Connecticut Statewide Transportation Study.**

FIRST-CLASS MAIL  
U.S. POSTAGE  
PAID  
STORRS, CT  
PERMIT NO 36

If you have already started completing the survey, **thank you!**  
If not, you still have time and participation is easy – please see the instructions below to get started.

Please complete Part 1 of the study before **December 18**

To participate, go online and enter your password: <https://cttransportationstudy.org>

<password>

Or call toll-free: 1-844-872-2562

**Remember, your input is important!** Your participation will help the Connecticut Department of Transportation plan and prioritize future transportation improvements in the state.

**As thanks for your participation, your household will be entered into a drawing for an Apple iPad** after completing the survey.

**?** Questions? Email: [help@cttransportationstudy.org](mailto:help@cttransportationstudy.org)

*Lo invitamos a compartir sus experiencias de traslado en su región.  
Para participar, llame sin costo: 1-844-872-2562*





**CONNECTICUT  
TRANSPORTATION  
INSTITUTE**  
270 Middle Turnpike, Unit 5202  
Storrs, CT 06269-5202

**Help improve the future of transportation in  
Connecticut by participating in this important study!**



# STATE OF CONNECTICUT

## DEPARTMENT OF TRANSPORTATION



2800 BERLIN TURNPIKE, P.O. BOX 317546  
NEWINGTON, CONNECTICUT 06131-7546

<Date>

<First and last name/City name resident

Street Address 1

Street Address 2 City, CT #####>

Dear <First and last name/City name resident>

Thank you for completing Part 1 of the Connecticut Statewide Transportation Study! The next step is to keep track of all the trips your household makes on <\_\_\_\_\_ Travel Date \_\_\_\_\_> (your assigned travel day) and then report your trips.

### Instructions for completing the travel diary:

**Step 1:** Each adult (age 18 or older) in your household should carry the travel diary included in this packet and record all trips made on <\_ Travel Date \_\_>. Adults should also complete a separate diary for children (age less than 18) in the household.

Person 1: \_\_\_\_\_ Person 2: \_\_\_\_\_ Person 3: \_\_\_\_\_ Person 4: \_\_\_\_\_  
Person 5: \_\_\_\_\_ Person 6: \_\_\_\_\_ Person 7: \_\_\_\_\_ Person 8: \_\_\_\_\_

**Step 2:** After <\_\_ Travel Date \_\_>, tell us about all trips made by each member of your household. You can do this either by:



Mailing back the travel diaries using the prepaid return envelopes to:

Connecticut Transportation Institute  
270 Middle Turnpike, Unit 5202  
Storrs, CT 06269-5202



Logging onto the secure study website using your password:

<https://cttransportationstudy.org>  
Password: <password>



Or calling the toll-free number:

1-844-872-2562  
Monday – Friday: 9:00 AM – 8:00 PM EST  
Saturday: 10 AM – 4:00 PM EST  
*Or leave us a message with the best time and number for us to call you.*

**That's all it takes to help us with this critical study!** Please report your trip details no later than <return by date>. As thanks for your time, your household will be entered into a drawing for an Apple iPad after completing the travel diary. Your privacy will be protected and all information will be kept confidential. The information will only be used for transportation planning purposes without disclosing identifiable information. Please refer to the study website for our privacy policy. For more details about this study, please see the back of this letter for answers to Frequently Asked Questions. You can also email [help@cttransportationstudy.org](mailto:help@cttransportationstudy.org) or call 1-844-872-2562.

Thank you in advance for your important contribution to improving transportation in Connecticut.

Sincerely,

Thomas Maziarz  
Bureau Chief, Bureau of Policy and Planning  
Connecticut Department of Transportation

*Lo invitamos a compartir sus experiencias de traslado en su región. Para participar, llame sin costo: 1-844-872-2562*



UConn



# CONNECTICUT STATEWIDE



## TRANSPORTATION STUDY

## FREQUENTLY ASKED QUESTIONS

SECURE STUDY WEBSITE: <https://cttransportationstudy.org>  
EMAIL: [help@cttransportationstudy.org](mailto:help@cttransportationstudy.org)  
TOLL-FREE TELEPHONE: 1-844-872-2562

### GENERAL INFORMATION

**What is the Connecticut Statewide Transportation Study all about?** The study is collecting information about everyday travel behavior of residents in the state of Connecticut including how we travel, where we go, why we travel, how long it takes, etc.

**How was I selected to participate?** Invited households (like yours) were randomly selected from all the residential addresses in the state. The random approach helps us understand the travel needs of all types of households from different regions in the state.

**Why should I participate?** Current data about residents' travel characteristics helps the state understand and plan for current and future transportation needs. It also helps local agencies plan for transportation improvements in your communities. Your responses have a large impact because yours is one of a small number of households invited to participate in the study.

**My travel on the date assigned to me isn't "typical" – should I still participate?** Yes. This study aims to collect travel information on the date assigned to you even if it is not a "typical" travel day. We will separately ask you a few questions about your usual travel habits.

**I don't travel very much – should I still participate?** Yes. Whether you make a lot of trips or don't go anywhere at all, please report what actually happens on your assigned travel date. In addition to driving, we also want to know about any trips you make by walking, biking, riding transit, or any other mode of transportation.

**Who is sponsoring this study?** This study is sponsored by Connecticut Department of Transportation in partnership with Connecticut Transportation Institute at UCONN.

**What are my rights as a participant?** You do not have to be in this study if you do not want to. If you agree to be in the study, but later change your mind, you may drop out at any time. There are no penalties or consequences of any kind if you decide that you do not want to participate, though you will not receive compensation. We will be happy to answer any questions you have about this study. If you have further questions about this project or if you have a research-related problem, you may contact the principal investigator, Dr. Karthik Charan Konduri at [kkonduri@engr.uconn.edu](mailto:kkonduri@engr.uconn.edu). If you have any questions concerning your rights as a research subject, you may contact the University of Connecticut Institutional Review Board (IRB) at 860-486-8802. The IRB is a group of people who review research studies to protect the rights and welfare of research participants. This protocol has been approved by the UConn IRB, Protocol #H15-307.

**What will I get for participating?** As thanks for your time, your household will be entered into a drawing for an Apple iPad after every person in your household completes the survey.

### TAKING THE SURVEY

**Why is my household assigned a specific travel date?** We are asking for information about the travel made by each person in your household on one chosen weekday. We call this your "travel day" or "travel date". This helps us develop a full picture of all the travel that happens across the region and the state on each weekday (even if it is not a "typical" travel day).

**What is a trip?** A trip is any time you travel from one location and stop at a new location. Even if you stop briefly for gas, at an ATM, or to drop a child off at school, travel to that stop counts as one trip, and travel from that stop to the next place counts as a separate trip. If you go out and return to the same place without stopping (such as a jog, bike ride, or leisurely drive) then this counts as two trips: from the starting location to the furthest point you reach, and the trip back to your starting point.

**What are some examples of trips?** See below for some common trips that people make:

- Drive to work
- Drop your child off at school
- Walk the dog
- Bike to the grocery store
- Walk to the bus stop and then ride the bus to the bank
- Carpool to a meeting in New York

Often what we think of as one trip may actually be a chain of several trips. For example, "I picked up my child and stopped to buy gas on my way home from work" counts as three trips: 1) a trip from work to your child's activity, 2) a trip from your child's activity to the gas station, and 3) the trip home.

**Should my children participate?** Yes, trips to and from school, sports practice, play dates, and other activities help us understand the full nature of how the transportation system is used, and how it can be improved.

**Who should be counted as a member of my household?** Everyone who lives in your dwelling unit and shares the kitchen is a part of your household, including family and non-family members.

### STUDY OVERVIEW

This study has 2 parts

#### 1 HOUSEHOLD INFO SURVEY

#### 2 TRAVEL DIARY SURVEY

**When do I take the survey?**

As soon as convenient

After the day of your assigned travel

**Who takes the survey?**

You

All adults (an adult should also report trips for children under 18)

**How long will the survey take?**

About 15 minutes

About 5 minutes per person

**What is the survey about?**

We ask about your household and household members' typical travel behavior

Return to the website, call us, or mail back your survey(s) to report the trips you made on your assigned travel date.

After completing both parts, your household will be entered into a drawing for an Apple iPad

## Thank you for your participation.

You are one of the first households to complete this study before we invite many others throughout the state. We would like to hear your thoughts on how we could improve the study.

Your feedback will remain anonymous and will only be used to help improve the study. Please see our privacy policy on the study website [cttransportationstudy.org](https://cttransportationstudy.org) for more information.

**Were any questions or instructions confusing or unclear?** *If so, please tell us which instructions were confusing and why.*

**Do you have any general recommendations for how we can further improve this study?** *If so, please tell us your ideas and suggestions.*

This study is being conducted by the Connecticut Department of Transportation (CTDOT), in partnership with the Connecticut Transportation Institute at the University of Connecticut (Uconn).



**UCONN**



# CONNECTICUT STATEWIDE



## TRANSPORTATION STUDY

## Travel Diary

Thank you for agreeing to participate in the Connecticut Statewide Transportation Study. Your input will help the Connecticut Department of Transportation better plan and prioritize future transportation improvements.

Please answer the questions in the pages that follow and report your responses either:



By calling the toll-free number: **1-844-872-2562**



By logging onto the secure study website <https://cttransportationstudy.org> with the password below



By mailing the travel diaries using the return envelope to:

**Connecticut Transportation Institute  
270 Middle Turnpike, Unit 5202, Storrs, CT 06269-5202**

**Traveler Name:**

**Travel Date:**

**Password:**

# General Instructions

To complete your participation in the study, please fill out the travel diary for each person in your household and report the trips made on the assigned travel date. We have sent you a diary form for each household member you listed in Part 1 of the study.

## Step 1 - On your assigned travel day:

Each adult (age 18 or older) in your household should carry this travel diary and note details about each trip made. Adults should complete a separate diary for each child (under age 18) in the household.

## Step 2 - After you complete your travel for the day:

Report your trip information to us. In order to report trips, you can either (a) call us or (b) log on to the secure study website or (c) mail us the travel diaries using the return envelope.


## Things to Remember

- Your travel day begins at 3AM on your assigned day and ends 24 hours later. For many people, the first trip begins when they leave home in the morning.
- Complete both Part A: General Information about Travel Day (Page 6) and Part B: Travel Diary (Pages 7 through 19)
- Report each trip you made on a separate page in Part B. See Page 5 for an example of a trip.
- For each trip you made on the assigned travel date, please provide information for Sections I, II, and III
- When providing information:
  - For multiple choice questions, check the correct option
  - For fill-in questions, use codes provided on Page 3 and Page 4 in the boxes provided
  - For each location visited, provide full street addresses or provide nearby intersection or cross-streets
  - For open-ended questions, provide as much details as possible in the space provided
  - When reporting fare/cost paid, please round to the nearest dollar.

## Confidentiality

This survey is conducted in accordance with strict privacy provisions. For more information, please visit our privacy policy page on the study website at <https://cttransportationstudy.org>.

Provide information for any additional trips in the table below. Please provide as much info as you are able in the space provided.

	Time Arrived At ⌚	Time Departed From ⌚	Trip Details		Traveled by Mode	Traveled With 
			Trip Purpose (See list 1)	Destination Name, Address, or Intersection		
Example	2:00PM	2:20PM	Pick up Dan	Somers High School, Somers CT	Car	Jamie, daughter
Place 13						
Place 14						
Place 15						
Place 16						
Place 17						
Place 18						
Place 19						
Place 20						
Place 21						
Place 22						



### I Where Did You Go?

Describe the type of location/business at Place 12:

Address:

City:  State:  Zip Code:

When did you arrive?  :  AM PM

What did you do there? (See List 1)

### II How Did You Get There?

Select mode of transportation below:

Vehicle in household

Other vehicle (rental, borrowed)

Bicycle

Walk/jog/wheelchair

Public (city) bus

Other (See List 2)

How many people were on the trip including yourself?

How many of these people were NOT members of your household?

*If you used a vehicle (household or other), answer below questions:*

Vehicle Make:  Model:  Year:

Were you the driver or passenger?  Driver  Passenger

Did you use a carpool/HOV lane on this trip?  Yes  No

Did you use a toll road on the trip?  No  Yes, and the toll was \$

Where did you park? (See List 3)

How did you pay for parking? (See List 4)  And the cost was \$

If you took a taxi or car service how much did you pay? \$

*If you used public transit (e.g. Bus, Metro-North), answer below questions:*

How did you travel to the first transit stop/station? (See List 5)

How did you travel from the last transit stop to Place 12? (See List 6)

How did you pay for fare? (See List 7)  And the cost was \$

How many transfers did you make?

List which system(s) you took. (See List 8) , , , ,

### III When Did You Leave?

When did you leave Place 12?  :  AM PM

Was this the last place you went to on your travel day?

No, please provide some limited details for all other places where you stopped at on the next page.

Yes. **Thank you, you're done!**

## Answer Codes

Codes for fill-in questions are below

### List 1: What did you do at the place?

- |   |  |
|---|--|
| 1. Go home                                  | 11. Exercise (gym, walk, run)                        |
| 2. Go to primary workplace                  | 12. Family activity (child's game)                   |
| 3. Go to other work-related place           | 13. Medical visit (doctor, dentist)                  |
| 4. Attend school/class                      | 14. Social (visit friends/relatives)                 |
| 5. Other school-related activity            | 15. Leisure/entertainment (movies)                   |
| 6. Grocery shopping                         | 16. Religious/civic/volunteer                        |
| 7. Other shopping (mall, store)             | 17. Vacation/holiday/traveling (hotel)               |
| 8. Run errands (bank, haircut)              | 18. Change travel mode (wait for bus, change planes) |
| 9. Go to restaurant/bar/get take-out        | 19. Other  |
| 10. Drop off/pick up/accompany other person |  |

### List 2: (Other) How did you get there?

- |   |                                     |
|---|-------------------------------------|
| 1. Subway                               | 8. Airplane/helicopter              |
| 2. Metro-North/Commuter Rail            | 9. Shuttle (hotel /airport shuttle) |
| 3. Regular Taxi/hired car               | 10. Train (Amtrak)                  |
| 4. School Bus                           | 11. Ferry/boat                      |
| 5. Vanpool                              | 12. Ride Share (Uber, Lyft)         |
| 6. Intercity Bus (Greyhound, Peter Pan) | 13. Other                           |
| 7. Dial-a-Ride/Paratransit              |                                     |

### List 3: Where did you park?

- |  |  |
|--|--|
| 1. Own driveway/garage                                 | 6. On street parking 2+ blocks away from destination |
| 2. Someone else's driveway                             | 7. Park & ride lot                                   |
| 3. Parking lot/garage at destination (within 2 blocks) | 8. Didn't park (waited, drop-off, drive-thru)        |
| 4. Parking lot/garage 2+ blocks away from destination  | 9. Other   |
| 5. On street parking at destination (within 2 blocks)  |  |

### List 4: Did you pay for parking?

- |                           |  |
|---------------------------|--|
| 1. No, parking was free   | 4. No, another person paid or was reimbursed |
| 2. Yes, with cash/tickets | 5. Not sure/don't remember                   |
| 3. Yes, with parking pass |  |

**List 5: How did you get to the first transit stop/station?**

- |                           |  |
|---------------------------|--|
| 1. Walked or jogged       | 5. Took a taxi/ride-share (Uber, Lyft) |
| 2. Rode a bike            | 6. Transferred from other transit      |
| 3. Drove and parked a car | 7. Was already at the stop             |
| 4. Got dropped off        | 8. Other                               |

**List 6: How did you go from transit stop to destination?**

- |                       |   |
|-----------------------|---|
| 1. Walked or jogged   | 5. Took a taxi /ride-share (Uber, Lyft) |
| 2. Rode a bike        | 6. Transferred to other transit         |
| 3. Drove a parked car | 7. Was already at the destination       |
| 4. Got picked up      | 8. Other                                |

**List 7: How did you pay for fare?**

- |                      |                            |
|----------------------|----------------------------|
| 1. Free (no cost)    | 4. Used pass (any type)    |
| 2. Cash or ticket(s) | 5. Not sure/don't remember |
| 3. Stored value card | 6. Other                   |

**List 8: Which transit system(s) did you take?**

- |                                      |  |
|--------------------------------------|--|
| 1. CT Transit – Hartford             | 14. New Britain Transportation Company |
| 2. CT Transit – Stamford             | 15. Windham Region Transit District    |
| 3. CT Transit – New Haven            | 16. North East Transportation          |
| 4. CT Transit – Meriden              | 17. Greater Bridgeport                 |
| 5. CT Transit – Bristol              | 18. Estuary Transit District           |
| 6. CT Transit – Waterbury            | 19. Housatonic Area Regional Transit   |
| 7. CT Transit – Wallingford          | 20. Milford Transit District           |
| 8. CTFastrak                         | 21. Norwalk Transit District           |
| 9. I-Bus Express                     | 22. Southeast Transit District SEAT    |
| 10. Norwalk Transit District         | 23. Valley Transit District            |
| 11. Northwestern Ct Transit District | 24. Metro North (MTA)                  |
| 12. Middletown Ct Area Transit       | 25. Amtrak                             |
| 13. Collins Bus Services             | 26. Shoreline East                     |

**I Where Did You Go?**

Describe the type of location/business at Place 11:

Address:

City:  State:  Zip Code:

When did you arrive?  :  AM PM

What did you do there? (See List 1)

**II How Did You Get There?**

Select mode of transportation below:

Vehicle in household

Other vehicle (rental, borrowed)

Bicycle

Walk/jog/wheelchair

Public (city) bus

Other (See List 2)

How many people were on the trip including yourself?

How many of these people were NOT members of your household?

*If you used a vehicle (household or other), answer below questions:*

Vehicle Make:  Model:  Year:

Were you the driver or passenger?  Driver  Passenger

Did you use a carpool/HOV lane on this trip?  Yes  No

Did you use a toll road on the trip?  No  Yes, and the toll was \$

Where did you park? (See List 3)

How did you pay for parking? (See List 4)  And the cost was \$

If you took a taxi or car service how much did you pay? \$

*If you used public transit (e.g. Bus, Metro-North), answer below questions:*

How did you travel to the first transit stop/station? (See List 5)

How did you travel from the last transit stop to Place 11? (See List 6)

How did you pay for fare? (See List 7)  And the cost was \$

How many transfers did you make?

List which system(s) you took. (See List 8) , , , ,

**III When Did You Leave?**

When did you leave Place 11?  :  AM PM

Was this the last place you went to on your travel day?

No, please provide details for Place 12 on the next page.

Yes. **Thank you, you're done!**

I **Where Did You Go?**

Describe the type of location/business at Place 10: \_\_\_\_\_

Address: \_\_\_\_\_

City: \_\_\_\_\_ State: \_\_\_\_\_ Zip Code: \_\_\_\_\_

When did you arrive? \_\_\_\_ : \_\_\_\_ AM PM

What did you do there? (See List 1) \_\_\_\_

II **How Did You Get There?**

Select mode of transportation below:

- Vehicle in household
- Other vehicle (rental, borrowed)
- Bicycle
- Walk/jog/wheelchair
- Public (city) bus
- Other (See List 2) \_\_\_\_

How many people were on the trip including yourself? \_\_\_\_

How many of these people were NOT members of your household? \_\_\_\_

*If you used a vehicle (household or other), answer below questions:*

Vehicle Make: \_\_\_\_\_ Model: \_\_\_\_\_ Year: \_\_\_\_

Were you the driver or passenger?  Driver  PassengerDid you use a carpool/HOV lane on this trip?  Yes  NoDid you use a toll road on the trip?  No  Yes, and the toll was \$ \_\_\_\_

Where did you park? (See List 3) \_\_\_\_

How did you pay for parking? (See List 4) \_\_\_\_ And the cost was \$ \_\_\_\_

If you took a taxi or car service how much did you pay? \$ \_\_\_\_

*If you used public transit (e.g. Bus, Metro-North), answer below questions:*

How did you travel to the first transit stop/station? (See List 5) \_\_\_\_

How did you travel from the last transit stop to Place 10? (See List 6) \_\_\_\_

How did you pay for fare? (See List 7) \_\_\_\_ And the cost was \$ \_\_\_\_

How many transfers did you make? \_\_\_\_

List which system(s) you took. (See List 8) \_\_\_\_, \_\_\_\_, \_\_\_\_, \_\_\_\_, \_\_\_\_

III **When Did You Leave?**

When did you leave Place 10? \_\_\_\_ : \_\_\_\_ AM PM

Was this the last place you went to on your travel day?

- No, please provide details for Place 11 on the next page.
- Yes. **Thank you, you're done!**

## Sample Travel Diary

I **Where Did You Go?**

Describe the type of location/business at Place 1: "Stop and Shop" supermarket

Address: 50 Windsorville Road

City: Vernon State: CT Zip Code: 06066

When did you arrive? 10 : 00 AM PM

What did you do there? (See List 1) 06

II **How Did You Get There?**

Select mode of transportation below:

- Vehicle in household
- Other vehicle (rental, borrowed)
- Bicycle
- Walk/jog/wheelchair
- Public (city) bus
- Other (See List 2) \_\_\_\_

How many people were on the trip including yourself? 03

How many of these people were NOT members of your household? 01

*If you used a vehicle (household or other), answer below questions:*

Vehicle Make: Toyota Model: Sequoia Year: 2003

Were you the driver or passenger?  Driver  PassengerDid you use a carpool/HOV lane on this trip?  Yes  NoDid you use a toll road on the trip?  No  Yes, and the toll was \$ 02

Where did you park? (See List 3) 03

How did you pay for parking? (See List 4) 02 And the cost was \$ 04

If you took a taxi or car service how much did you pay? \$ \_\_\_\_

*If you used public transit (e.g. Bus, Metro-North), answer below questions:*

How did you travel to the first transit stop/station? (See List 5) \_\_\_\_

How did you travel from the last transit stop to Place 1? (See List 6) \_\_\_\_

How did you pay for fare? (See List 7) \_\_\_\_ And the cost was \$ \_\_\_\_

How many transfers did you make? \_\_\_\_

List which system(s) you took. (See List 8) \_\_\_\_, \_\_\_\_, \_\_\_\_, \_\_\_\_, \_\_\_\_

III **When Did You Leave?**

When did you leave Place 1? 11 : 00 AM PM

Was this the last place you went to on your travel day?

- No, please provide details for Place 2 on the next page.
- Yes. **Thank you, you're done!**

# Begin Filling Your Travel Diary Here

## Part A: General information about travel day

### Where were you at 3 AM when the travel day began?

- Home
- Work (Primary)
- Another place, please specify address below:

Address: \_\_\_\_\_  
City: \_\_\_\_\_ State: \_\_\_\_\_ Zip Code: \_\_\_\_\_

*If traveling between places, please provide the last place you stopped at before 3AM (even if it was a short stop such as to get gas).*

**Did you go anywhere on your travel day, even if it was a short trip such as a walk or bike ride?**  Yes  No

### If you made trips, at what time did you leave the starting location?

\_\_\_\_ : \_\_\_\_ AM PM (Enter hour and minute and circle AM or PM)

If you did not go anywhere, what were the reason(s)? Check all that apply.

- Was not scheduled to work or took a vacation/personal day
- Worked from home for pay (e.g. telecommuted or home-based job)
- Worked around the home (not for pay)
- The kids were on school vacation/break
- Did not have available transportation (no car, no way to get to bus, etc.)
- Was sick or caring for another person (child or family member) at home
- Was waiting for a delivery or visitor (e.g. cable installation)
- Other, please specify: \_\_\_\_\_

**If you made trips, proceed to Part B on next page to report details about your first trip.**

**If you did not go anywhere, your travel diary is complete.**

## I Where Did You Go?

Describe the type of location/business at Place 9: \_\_\_\_\_

Address: \_\_\_\_\_

City: \_\_\_\_\_ State: \_\_\_\_\_ Zip Code: \_\_\_\_\_

When did you arrive? \_\_\_\_ : \_\_\_\_ AM PM

What did you do there? (See List 1) \_\_\_\_

## II How Did You Get There?

Select mode of transportation below:

- Vehicle in household
- Other vehicle (rental, borrowed)
- Bicycle
- Walk/jog/wheelchair
- Public (city) bus
- Other (See List 2) \_\_\_\_

How many people were on the trip including yourself? \_\_\_\_

How many of these people were NOT members of your household? \_\_\_\_

*If you used a vehicle (household or other), answer below questions:*

Vehicle Make: \_\_\_\_\_ Model: \_\_\_\_\_ Year: \_\_\_\_\_

Were you the driver or passenger?  Driver  Passenger

Did you use a carpool/HOV lane on this trip?  Yes  No

Did you use a toll road on the trip?  No  Yes, and the toll was \$ \_\_\_\_

Where did you park? (See List 3) \_\_\_\_

How did you pay for parking? (See List 4) \_\_\_\_ And the cost was \$ \_\_\_\_

If you took a taxi or car service how much did you pay? \$ \_\_\_\_

*If you used public transit (e.g. Bus, Metro-North), answer below questions:*

How did you travel to the first transit stop/station? (See List 5) \_\_\_\_

How did you travel from the last transit stop to Place 9? (See List 6) \_\_\_\_

How did you pay for fare? (See List 7) \_\_\_\_ And the cost was \$ \_\_\_\_

How many transfers did you make? \_\_\_\_

List which system(s) you took. (See List 8) \_\_\_\_, \_\_\_\_, \_\_\_\_, \_\_\_\_, \_\_\_\_

## III When Did You Leave?

When did you leave Place 9? \_\_\_\_ : \_\_\_\_ AM PM

Was this the last place you went to on your travel day?

- No, please provide details for Place 10 on the next page.
- Yes. **Thank you, you're done!**

I **Where Did You Go?**Describe the type of location/business at Place 8: Address: City:  State:  Zip Code: When did you arrive?  :  AM PMWhat did you do there? (See List 1) II **How Did You Get There?**

Select mode of transportation below:

- Vehicle in household  
 Other vehicle (rental, borrowed)  
 Bicycle  
 Walk/jog/wheelchair  
 Public (city) bus  
 Other (See List 2)

How many people were on the trip

including yourself? 

How many of these people were NOT

members of your household? *If you used a vehicle (household or other), answer below questions:*Vehicle Make:  Model:  Year: Were you the driver or passenger?  Driver  PassengerDid you use a carpool/HOV lane on this trip?  Yes  NoDid you use a toll road on the trip?  No  Yes, and the toll was \$ Where did you park? (See List 3) How did you pay for parking? (See List 4)  And the cost was \$ If you took a taxi or car service how much did you pay? \$ *If you used public transit (e.g. Bus, Metro-North), answer below questions:*How did you travel to the first transit stop/station? (See List 5) How did you travel from the last transit stop to Place 8? (See List 6) How did you pay for fare? (See List 7)  And the cost was \$ How many transfers did you make? List which system(s) you took. (See List 8) , , , , III **When Did You Leave?**When did you leave Place 8?  :  AM PM

Was this the last place you went to on your travel day?

- No, please provide details for Place 9 on the next page.  
 Yes. **Thank you, you're done!**

I **Where Did You Go?**Describe the type of location/business at Place 1: Address: City:  State:  Zip Code: When did you arrive?  :  AM PMWhat did you do there? (See List 1) II **How Did You Get There?**

Select mode of transportation below:

- Vehicle in household  
 Other vehicle (rental, borrowed)  
 Bicycle  
 Walk/jog/wheelchair  
 Public (city) bus  
 Other (See List 2)

How many people were on the trip

including yourself? 

How many of these people were NOT

members of your household? *If you used a vehicle (household or other), answer below questions:*Vehicle Make:  Model:  Year: Were you the driver or passenger?  Driver  PassengerDid you use a carpool/HOV lane on this trip?  Yes  NoDid you use a toll road on the trip?  No  Yes, and the toll was \$ Where did you park? (See List 3) How did you pay for parking? (See List 4)  And the cost was \$ If you took a taxi or car service how much did you pay? \$ *If you used public transit (e.g. Bus, Metro-North), answer below questions:*How did you travel to the first transit stop/station? (See List 5) How did you travel from the last transit stop to Place 1? (See List 6) How did you pay for fare? (See List 7)  And the cost was \$ How many transfers did you make? List which system(s) you took. (See List 8) , , , , III **When Did You Leave?**When did you leave Place 1?  :  AM PM

Was this the last place you went to on your travel day?

- No, please provide details for Place 2 on the next page.  
 Yes. **Thank you, you're done!**

I **Where Did You Go?**Describe the type of location/business at Place 2: Address: City:  State:  Zip Code: When did you arrive?  :  AM PMWhat did you do there? (See List 1) II **How Did You Get There?**

Select mode of transportation below:

- Vehicle in household  
 Other vehicle (rental, borrowed)  
 Bicycle  
 Walk/jog/wheelchair  
 Public (city) bus  
 Other (See List 2)

How many people were on the trip

including yourself? 

How many of these people were NOT

members of your household? *If you used a vehicle (household or other), answer below questions:*Vehicle Make:  Model:  Year: Were you the driver or passenger?  Driver  PassengerDid you use a carpool/HOV lane on this trip?  Yes  NoDid you use a toll road on the trip?  No  Yes, and the toll was \$ Where did you park? (See List 3) How did you pay for parking? (See List 4)  And the cost was \$ If you took a taxi or car service how much did you pay? \$ *If you used public transit (e.g. Bus, Metro-North), answer below questions:*How did you travel to the first transit stop/station? (See List 5) How did you travel from the last transit stop to Place 2? (See List 6) How did you pay for fare? (See List 7)  And the cost was \$ How many transfers did you make? List which system(s) you took. (See List 8) , , , , III **When Did You Leave?**When did you leave Place 2?  :  AM PM

Was this the last place you went to on your travel day?

- No, please provide details for Place 3 on the next page.  
 Yes. **Thank you, you're done!**

I **Where Did You Go?**Describe the type of location/business at Place 7: Address: City:  State:  Zip Code: When did you arrive?  :  AM PMWhat did you do there? (See List 1) II **How Did You Get There?**

Select mode of transportation below:

- Vehicle in household  
 Other vehicle (rental, borrowed)  
 Bicycle  
 Walk/jog/wheelchair  
 Public (city) bus  
 Other (See List 2)

How many people were on the trip

including yourself? 

How many of these people were NOT

members of your household? *If you used a vehicle (household or other), answer below questions:*Vehicle Make:  Model:  Year: Were you the driver or passenger?  Driver  PassengerDid you use a carpool/HOV lane on this trip?  Yes  NoDid you use a toll road on the trip?  No  Yes, and the toll was \$ Where did you park? (See List 3) How did you pay for parking? (See List 4)  And the cost was \$ If you took a taxi or car service how much did you pay? \$ *If you used public transit (e.g. Bus, Metro-North), answer below questions:*How did you travel to the first transit stop/station? (See List 5) How did you travel from the last transit stop to Place 7? (See List 6) How did you pay for fare? (See List 7)  And the cost was \$ How many transfers did you make? List which system(s) you took. (See List 8) , , , , III **When Did You Leave?**When did you leave Place 7?  :  AM PM

Was this the last place you went to on your travel day?

- No, please provide details for Place 8 on the next page.  
 Yes. **Thank you, you're done!**

I  
Where Did You Go?Describe the type of location/business at Place 6: Address: City:  State:  Zip Code: When did you arrive?  :  AM PMWhat did you do there? (See List 1) II  
How Did You Get There?

Select mode of transportation below:

- Vehicle in household
- Other vehicle (rental, borrowed)
- Bicycle
- Walk/jog/wheelchair
- Public (city) bus
- Other (See List 2)

How many people were on the trip

including yourself? 

How many of these people were NOT

members of your household? *If you used a vehicle (household or other), answer below questions:*Vehicle Make:  Model:  Year: Were you the driver or passenger?  Driver  PassengerDid you use a carpool/HOV lane on this trip?  Yes  NoDid you use a toll road on the trip?  No  Yes, and the toll was \$ Where did you park? (See List 3) How did you pay for parking? (See List 4)  And the cost was \$ If you took a taxi or car service how much did you pay? \$ *If you used public transit (e.g. Bus, Metro-North), answer below questions:*How did you travel to the first transit stop/station? (See List 5) How did you travel from the last transit stop to Place 6? (See List 6) How did you pay for fare? (See List 7)  And the cost was \$ How many transfers did you make? List which system(s) you took. (See List 8) , , , , III  
When Did You Leave?When did you leave Place 6?  :  AM PM

Was this the last place you went to on your travel day?

- No, please provide details for Place 7 on the next page.
- Yes. **Thank you, you're done!**

I  
Where Did You Go?Describe the type of location/business at Place 3: Address: City:  State:  Zip Code: When did you arrive?  :  AM PMWhat did you do there? (See List 1) II  
How Did You Get There?

Select mode of transportation below:

- Vehicle in household
- Other vehicle (rental, borrowed)
- Bicycle
- Walk/jog/wheelchair
- Public (city) bus
- Other (See List 2)

How many people were on the trip

including yourself? 

How many of these people were NOT

members of your household? *If you used a vehicle (household or other), answer below questions:*Vehicle Make:  Model:  Year: Were you the driver or passenger?  Driver  PassengerDid you use a carpool/HOV lane on this trip?  Yes  NoDid you use a toll road on the trip?  No  Yes, and the toll was \$ Where did you park? (See List 3) How did you pay for parking? (See List 4)  And the cost was \$ If you took a taxi or car service how much did you pay? \$ *If you used public transit (e.g. Bus, Metro-North), answer below questions:*How did you travel to the first transit stop/station? (See List 5) How did you travel from the last transit stop to Place 3? (See List 6) How did you pay for fare? (See List 7)  And the cost was \$ How many transfers did you make? List which system(s) you took. (See List 8) , , , , III  
When Did You Leave?When did you leave Place 3?  :  AM PM

Was this the last place you went to on your travel day?

- No, please provide details for Place 4 on the next page.
- Yes. **Thank you, you're done!**

I **Where Did You Go?**Describe the type of location/business at Place 4: Address: City:  State:  Zip Code: When did you arrive?  :  AM PMWhat did you do there? (See List 1) II **How Did You Get There?**

Select mode of transportation below:

- Vehicle in household
- Other vehicle (rental, borrowed)
- Bicycle
- Walk/jog/wheelchair
- Public (city) bus
- Other (See List 2)

How many people were on the trip

including yourself? 

How many of these people were NOT

members of your household? *If you used a vehicle (household or other), answer below questions:*Vehicle Make:  Model:  Year: Were you the driver or passenger?  Driver  PassengerDid you use a carpool/HOV lane on this trip?  Yes  NoDid you use a toll road on the trip?  No  Yes, and the toll was \$ Where did you park? (See List 3) How did you pay for parking? (See List 4)  And the cost was \$ If you took a taxi or car service how much did you pay? \$ *If you used public transit (e.g. Bus, Metro-North), answer below questions:*How did you travel to the first transit stop/station? (See List 5) How did you travel from the last transit stop to Place 4? (See List 6) How did you pay for fare? (See List 7)  And the cost was \$ How many transfers did you make? List which system(s) you took. (See List 8) , , , , III **When Did You Leave?**When did you leave Place 4?  :  AM PM

Was this the last place you went to on your travel day?

- No, please provide details for Place 5 on the next page.
- Yes. **Thank you, you're done!**

I **Where Did You Go?**Describe the type of location/business at Place 5: Address: City:  State:  Zip Code: When did you arrive?  :  AM PMWhat did you do there? (See List 1) II **How Did You Get There?**

Select mode of transportation below:

- Vehicle in household
- Other vehicle (rental, borrowed)
- Bicycle
- Walk/jog/wheelchair
- Public (city) bus
- Other (See List 2)

How many people were on the trip

including yourself? 

How many of these people were NOT

members of your household? *If you used a vehicle (household or other), answer below questions:*Vehicle Make:  Model:  Year: Were you the driver or passenger?  Driver  PassengerDid you use a carpool/HOV lane on this trip?  Yes  NoDid you use a toll road on the trip?  No  Yes, and the toll was \$ Where did you park? (See List 3) How did you pay for parking? (See List 4)  And the cost was \$ If you took a taxi or car service how much did you pay? \$ *If you used public transit (e.g. Bus, Metro-North), answer below questions:*How did you travel to the first transit stop/station? (See List 5) How did you travel from the last transit stop to Place 5? (See List 6) How did you pay for fare? (See List 7)  And the cost was \$ How many transfers did you make? List which system(s) you took. (See List 8) , , , , III **When Did You Leave?**When did you leave Place 5?  :  AM PM

Was this the last place you went to on your travel day?

- No, please provide details for Place 6 on the next page.
- Yes. **Thank you, you're done!**



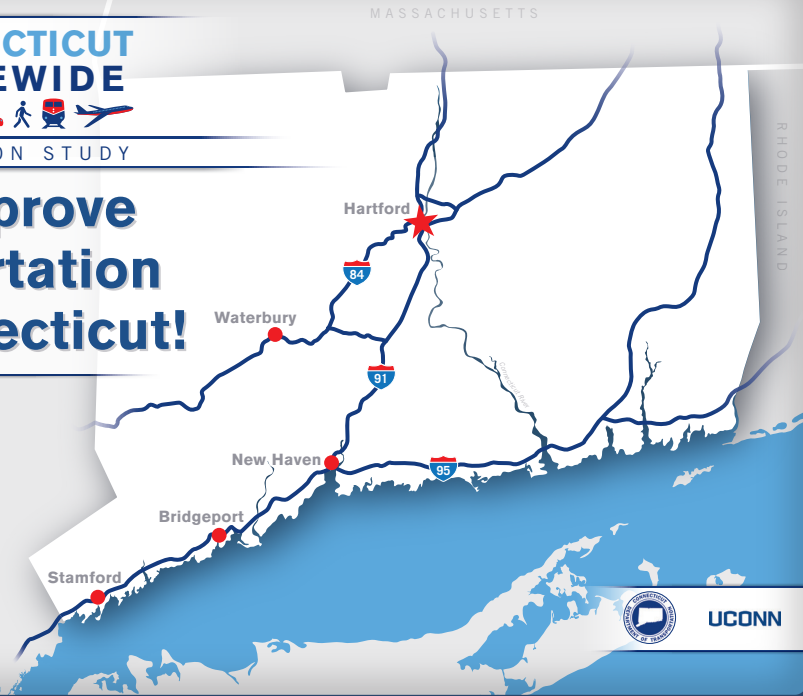


# CONNECTICUT STATEWIDE



TRANSPORTATION STUDY

# Help improve transportation in Connecticut!



UConn





Connecticut Transportation Institute  
270 Middle Turnpike, Unit 5202, Storrs, CT 06269-5202

**In a few days, you will receive an invitation packet in the mail to participate in an important transportation study.**

FIRST-CLASS MAIL  
U.S. POSTAGE  
PAID  
STORRS, CT  
PERMIT NO 36

The Connecticut Department of Transportation and the Connecticut Transportation Institute at UCONN are performing this study to better understand the travel behaviors and transportation needs of Connecticut residents. The information collected in this study will help improve the transportation system and prioritize future transportation improvements in the state of Connecticut.

You are one of the few households randomly selected to participate in the study and your participation will have a significant impact. The information you provide will be kept confidential and will only be used for transportation planning purposes without disclosing identifiable information. **As thanks for your participation, your household will be entered into a drawing for an Apple iPad** after completing the survey.

To start now, go to the secure study website with your password: <https://cttransportationstudy.org>

Or call toll-free: 1-844-872-2562

**?** Questions? Email: [help@cttransportationstudy.org](mailto:help@cttransportationstudy.org)

*Lo invitamos a compartir sus experiencias de traslado en su región.  
Para participar, llame sin costo: 1-844-872-2562*





**CONNECTICUT  
TRANSPORTATION  
INSTITUTE**  
270 Middle Turnpike, Unit 5202  
Storrs, CT 06269-5202

FIRST-CLASS MAIL  
U.S. POSTAGE  
PAID  
STORRS, CT  
PERMIT NO 36

**Help improve the future of transportation in  
Connecticut by participating in this important study!**





# STATE OF CONNECTICUT

## DEPARTMENT OF TRANSPORTATION



2800 BERLIN TURNPIKE, P.O. BOX 317546  
NEWINGTON, CONNECTICUT 06131-7546

<Letter Date>

<First and last name/City name resident  
Street Address 1  
Street Address 2  
City, CT #####>

Dear <First and last name/City name resident>

I'm asking you to help us improve our state's transportation system by participating in the Connecticut Statewide Transportation Study. Your input will help the Connecticut Department of Transportation to better plan and prioritize future transportation improvements. Yours is one of the few households randomly selected to participate in this study. The information you provide will have a significant impact on transportation planning in the state and in your community. As thanks for your time, **your household will be entered into a drawing for an Apple iPad** after completing the survey.

### PARTICIPATION IN THE STUDY IS A SIMPLE THREE STEP PROCESS:

#### STEP 1: Briefly tell us about your household. You can do this now.



Log on to the secure website using your password:

Study website: <https://cttransportationstudy.org>

Password:

<password>



Or, participate over the phone by calling toll-free:

**1-844-872-2562**

- Monday-Friday: 9AM – 8PM EST
- Saturday: 10AM – 4PM EST

*Or leave us a message with the best time and number for us to call you.*

**STEP 2: Track your trips on <travel date>**. We ask that each member of your household keep track of every trip they make that day, using the enclosed Travel Logs to help remember the details of each trip.

**STEP 3: Tell us about your travels.** Just like Step 1, return to the survey website with your password or call us to report the trips you made on <travel date>. We will also ask a few questions about your household's typical travel habits.

That's all it takes to help us with this critical study!

**Your privacy will be protected** and your name and address will never be linked to the survey form. All information will be kept confidential and will only be used for transportation planning purposes without disclosing identifiable information. Please refer to the study website for our privacy policy.

For more details about this study, please see the back of this letter for answers to Frequently Asked Questions. You can also email [help@cttransportationstudy.org](mailto:help@cttransportationstudy.org) or call **1-844-872-2562**.

Thank you in advance for your important contribution to improving transportation in Connecticut.

Sincerely,

Thomas Maziarz  
Bureau Chief, Bureau of Policy and Planning  
Connecticut Department of Transportation

*Lo invitamos a compartir sus experiencias de traslado en su región. Para participar, llame sin costo: 1-844-872-2562*



UConn



## FREQUENTLY ASKED QUESTIONS

SECURE STUDY WEBSITE: <https://cttransportationstudy.org>  
 EMAIL: [help@cttransportationstudy.org](mailto:help@cttransportationstudy.org)  
 TOLL-FREE TELEPHONE: 1-844-872-2562

*Lo invitamos a compartir sus experiencias de traslado en su región. Para participar, llame sin costo: 1-844-872-2562*

### GENERAL INFORMATION

**What is the Connecticut Statewide Transportation Study all about?** The study is collecting information about everyday travel behavior of residents in the state of Connecticut including how we travel, where we go, why we travel, how long it takes, etc.

**How was I selected to participate?** Invited households (like yours) were randomly selected from all the residential addresses in the state. The random approach helps us understand the travel needs of all types of households from different regions in the state.

**Why should I participate?** Current data about residents' travel characteristics helps the state understand and plan for current and future transportation needs. It also helps local agencies plan for transportation improvements in your communities. Your responses have a large impact because yours is one of a small number of households invited to participate in the study.

**My travel on the date assigned to me isn't "typical" – should I still participate?** Yes. This study aims to collect travel information on the date assigned to you even if it is not a "typical" travel day. We will separately ask you a few questions about your usual travel habits.

**I don't travel very much – should I still participate?** Yes. Whether you make a lot of trips or don't go anywhere at all, please report what actually happens on your assigned travel date. In addition to driving, we also want to know about any trips you make by walking, biking, riding transit, or any other mode of transportation.

**Who is sponsoring this study?** This study is sponsored by Connecticut Department of Transportation in partnership with Connecticut Transportation Institute at UCONN.

**What are my rights as a participant?** You do not have to be in this study if you do not want to. If you agree to be in the study, but later change your mind, you may drop out at any time. There are no penalties or consequences of any kind if you decide that you do not want to participate, though you will not receive compensation. We will be happy to answer any questions you have about this study. If you have further questions about this project or if you have a research-related problem, you may contact the principal investigator, Dr. Karthik Charan Konduri at [kkonduri@engr.uconn.edu](mailto:kkonduri@engr.uconn.edu). If you have any questions concerning your rights as a research subject, you may contact the University of Connecticut Institutional Review Board (IRB) at 860-486-8802. The IRB is a group of people who review research studies to protect the rights and welfare of research participants. This protocol has been approved by the UConn IRB, Protocol #H15-307.

**What will I get for participating?** As thanks for your time, your household will be entered into a drawing for an Apple iPad after every person in your household completes the survey.

### TAKING THE SURVEY

**What do I use the "Travel Log" for?** The "Travel Log" can be used to keep track of the details of your trips on the assigned travel date.

**Why is my household assigned a specific travel date?** We are asking for information about the travel made by each person in your household on one chosen weekday. We call this your "travel day" or "travel date". This helps us develop a full picture of all the travel that happens across the region and the state on each weekday (even if it is not a "typical" travel day).

**What is a trip?** A trip is any time you travel from one location and stop at a new location. Even if you stop briefly for gas, at an ATM, or to drop a child off at school, travel to that stop counts as one trip, and travel from that stop to the next place counts as a separate trip. If you go out and return to the same place without stopping (such as a jog, bike ride, or leisurely drive) then this counts as two trips: from the starting location to the furthest point you reach, and the trip back to your starting point.

**What are some examples of trips?** See below for some common trips that people make:

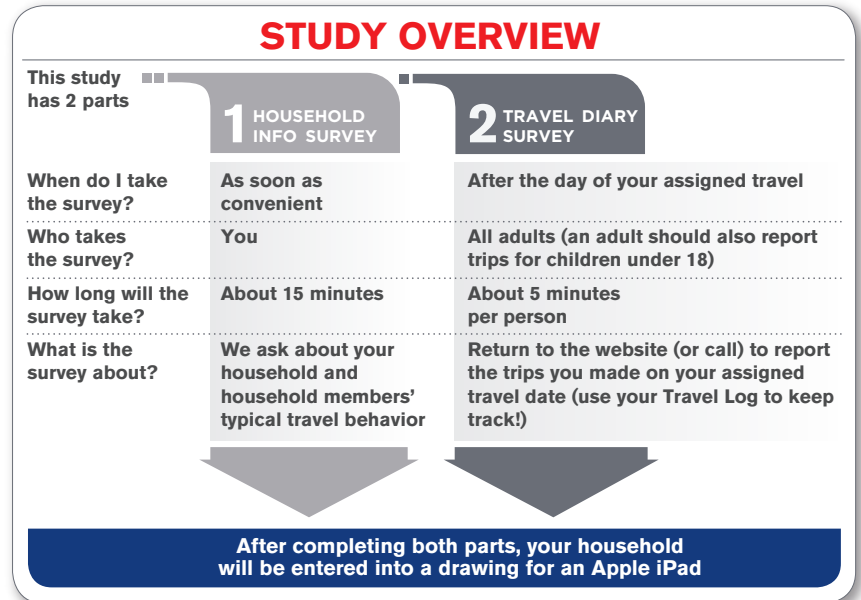
- Drive to work
- Drop your child off at school
- Walk the dog
- Bike to the grocery store
- Walk to the bus stop and then ride the bus to the bank
- Carpool to a meeting in New York

Often what we think of as one trip may actually be a chain of several trips. For example, "I picked up my child and stopped to buy gas on my way home from work" counts as three trips: 1) a trip from work to your child's activity, 2) a trip from your child's activity to the gas station, and 3) the trip home.

**Should my children participate?** Yes, trips to and from school, sports practice, play dates, and other activities help us understand the full nature of how the transportation system is used, and how it can be improved.

**Who should be counted as a member of my household?** Everyone who lives in your dwelling unit and shares the kitchen is a part of your household, including family and non-family members.

### STUDY OVERVIEW



**TRAVEL LOG INSTRUCTIONS**

SECURE STUDY WEBSITE: <https://cttransportationstudy.org>  
 TOLL-FREE TELEPHONE: 1-844-872-2562

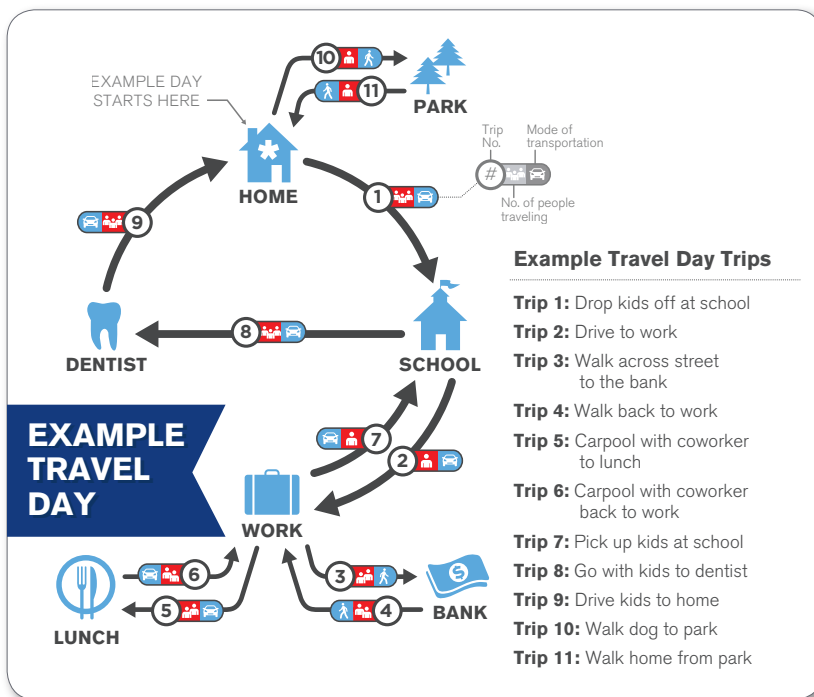
**STEP 1: On your assigned travel day:**

Each adult (age 18 or older) in your household should take this Travel Log with them and note each trip made. Note: Your travel day begins at 3AM on your assigned day and ends 24 hours later. For many people, the first trip begins when they leave home in the morning.

**STEP 2: After you complete your travel for the day:**

Have your password ready (from the invitation letter) and call us or log on to the secure study website to record all your logged trips. Adults should also report all trips for children (under age 18) in the household.

**What is a trip?** A trip is any time you travel from one location and stop at a new location. Even if you stop briefly for gas, at an ATM, or to drop a child off at school, travel to that stop counts as one trip, and travel from that stop to the next place counts as a separate trip. If you go out and return to the same place without stopping (such as a jog, bike ride, or leisurely drive) then this counts as two trips: from the starting location to the furthest point you reach, and the trip back to your starting point.



**TRAVEL LOG INSTRUCTIONS**

SECURE STUDY WEBSITE: <https://cttransportationstudy.org>  
 TOLL-FREE TELEPHONE: 1-844-872-2562

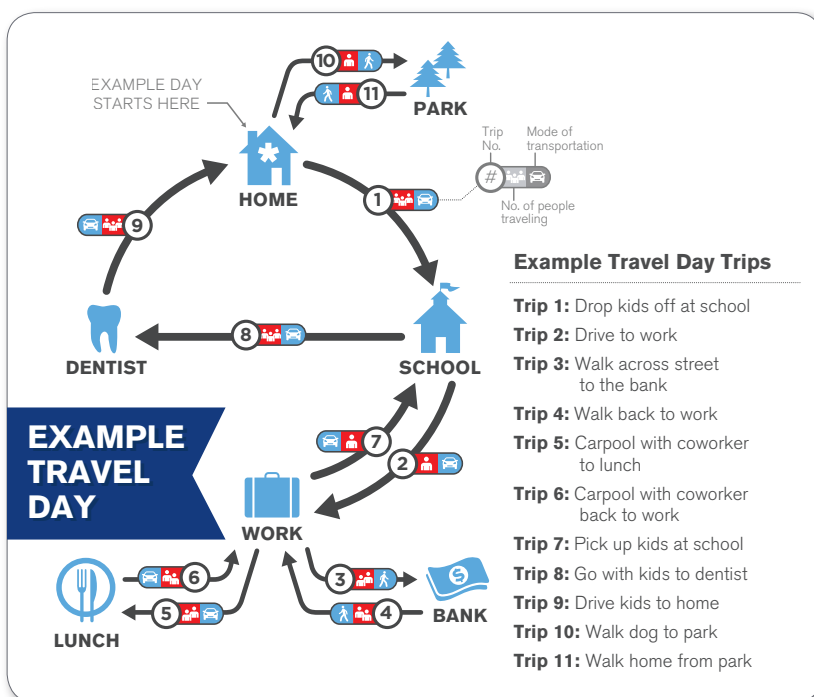
**STEP 1: On your assigned travel day:**

Each adult (age 18 or older) in your household should take this Travel Log with them and note each trip made. Note: Your travel day begins at 3AM on your assigned day and ends 24 hours later. For many people, the first trip begins when they leave home in the morning.

**STEP 2: After you complete your travel for the day:**

Have your password ready (from the invitation letter) and call us or log on to the secure study website to record all your logged trips. Adults should also report all trips for children (under age 18) in the household.

**What is a trip?** A trip is any time you travel from one location and stop at a new location. Even if you stop briefly for gas, at an ATM, or to drop a child off at school, travel to that stop counts as one trip, and travel from that stop to the next place counts as a separate trip. If you go out and return to the same place without stopping (such as a jog, bike ride, or leisurely drive) then this counts as two trips: from the starting location to the furthest point you reach, and the trip back to your starting point.





### TRAVEL LOG

SECURE STUDY WEBSITE:  
<https://cttransportationstudy.org>  
 TOLL-FREE TELEPHONE:  
**1-844-872-2562**

Name

Travel Date

Password

	When did your trip...		Where did you go?		Traveled by: 	Traveled with: 
	Start	End	Description	Address, Intersection, or Business Name		
Example	7:05AM	7:20AM	Drop kids at school	West Middle Elementary School, Hartford	Car	Grace, Sophie
Example	7:25AM	7:45AM	Drive to work	550 Main St, Hartford	Car	N/A
1st Trip						
2nd Trip						
3rd Trip						
4th Trip						
5th Trip						
6th Trip						
7th Trip						
8th Trip						
9th Trip						
10th Trip						

- Include ALL trips you made on your travel day, even short stops such as stopping for gas or picking up coffee
- Include only the time spent traveling when listing your 'start' and 'end' times. Do not include any time spent at the location



**Questions?**  
 TOLL-FREE TELEPHONE:  
**1-844-872-2562**  
 EMAIL:  
[help@cttransportationstudy.org](mailto:help@cttransportationstudy.org)

*This sheet is for your use only. We do not need you to return this form. If you have questions, please email: [help@cttransportationstudy.org](mailto:help@cttransportationstudy.org)*



### TRAVEL LOG

SECURE STUDY WEBSITE:  
<https://cttransportationstudy.org>  
 TOLL-FREE TELEPHONE:  
**1-844-872-2562**

Name

Travel Date

Password

	When did your trip...		Where did you go?		Traveled by: 	Traveled with: 
	Start	End	Description	Address, Intersection, or Business Name		
Example	7:05AM	7:20AM	Drop kids at school	West Middle Elementary School, Hartford	Car	Grace, Sophie
Example	7:25AM	7:45AM	Drive to work	550 Main St, Hartford	Car	N/A
1st Trip						
2nd Trip						
3rd Trip						
4th Trip						
5th Trip						
6th Trip						
7th Trip						
8th Trip						
9th Trip						
10th Trip						

- Include ALL trips you made on your travel day, even short stops such as stopping for gas or picking up coffee
- Include only the time spent traveling when listing your 'start' and 'end' times. Do not include any time spent at the location



**Questions?**  
 TOLL-FREE TELEPHONE:  
**1-844-872-2562**  
 EMAIL:  
[help@cttransportationstudy.org](mailto:help@cttransportationstudy.org)

*This sheet is for your use only. We do not need you to return this form. If you have questions, please email: [help@cttransportationstudy.org](mailto:help@cttransportationstudy.org)*



# CONNECTICUT STATEWIDE



TRANSPORTATION STUDY

## Help improve transportation in Connecticut!

**REMINDER:  
You can still participate!**



UConn







Connecticut Transportation Institute  
270 Middle Turnpike, Unit 5202, Storrs, CT 06269-5202

**We recently mailed you an invitation to participate in the Connecticut Statewide Transportation Study.**

FIRST-CLASS MAIL  
U.S. POSTAGE  
PAID  
STORRS, CT  
PERMIT NO 36

If you have already started completing the survey, **thank you!**  
If not, you still have time and participation is easy – please see the instructions below to get started.

Please tell us about your travels on: **<travel date>**

To participate, go online and enter your password: **<https://cttransportationstudy.org>**

**<password>**

Or call toll-free: **1-844-872-2562**

**Remember, your input is important!** Your participation will help the Connecticut Department of Transportation plan and prioritize future transportation improvements in the state.

**As thanks for your participation, your household will be entered into a drawing for an Apple iPad** after completing the survey.

**?** **Questions? Email: [help@cttransportationstudy.org](mailto:help@cttransportationstudy.org)**

*Lo invitamos a compartir sus experiencias de traslado en su región.  
Para participar, llame sin costo: 1-844-872-2562*

