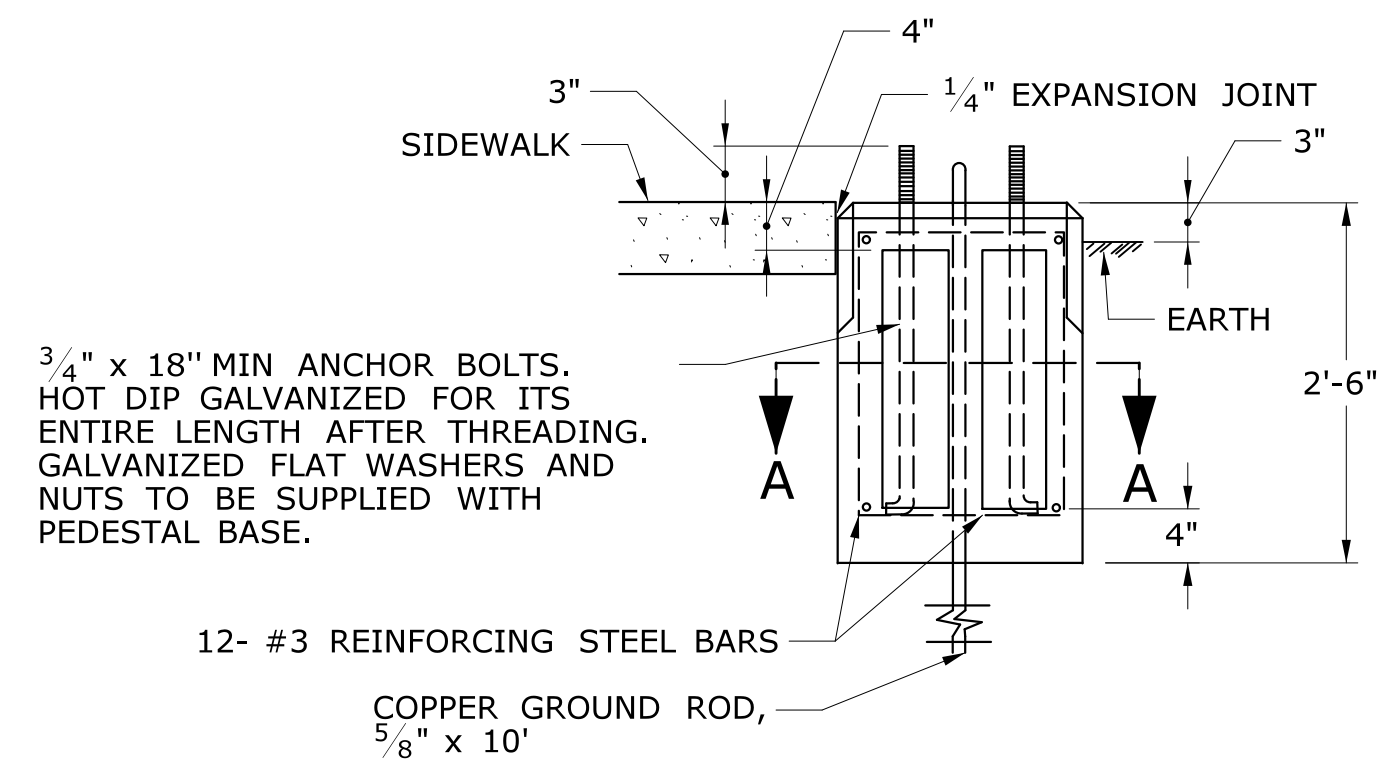
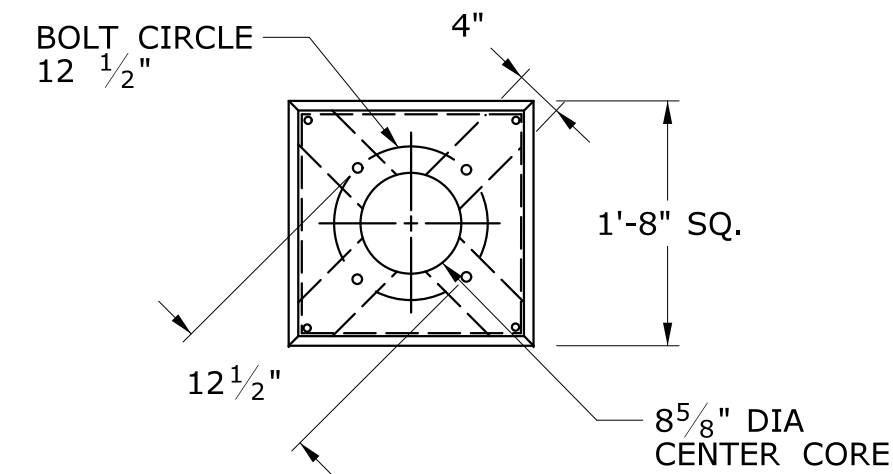


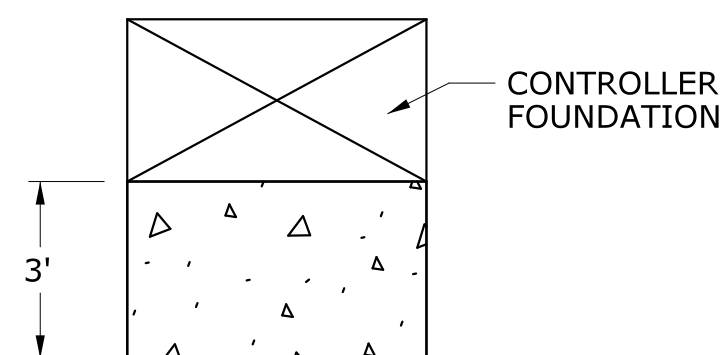
PICTORIAL SECTION A-A



TRAFFIC CONTROL FOUNDATION PEDESTAL - TYPE I - PRECAST

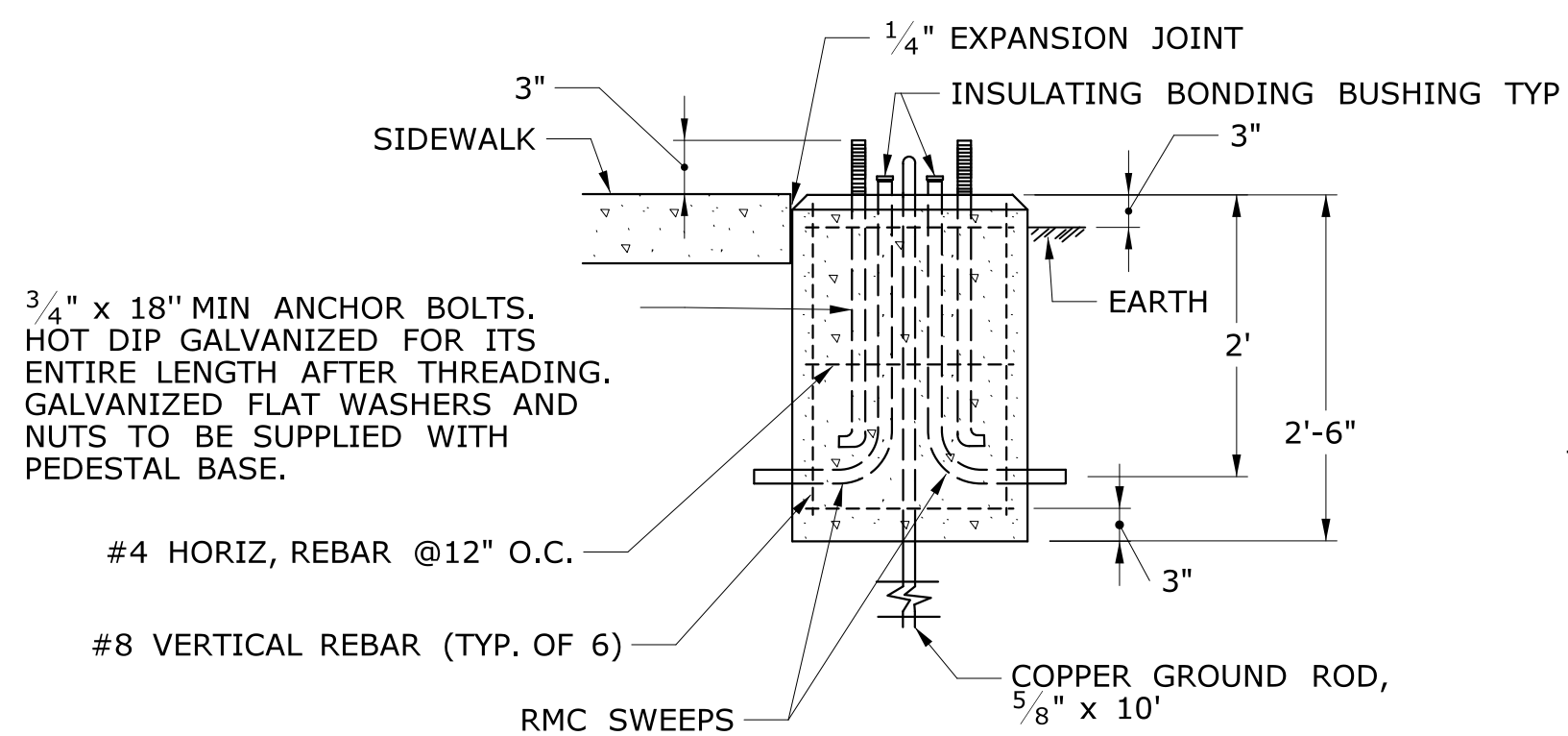
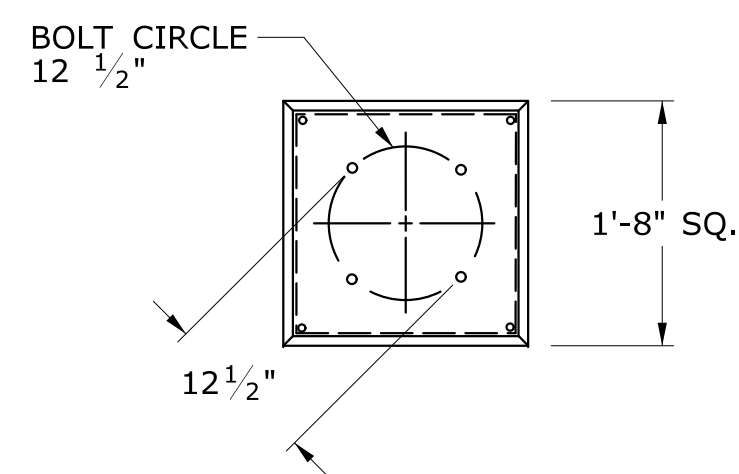
TRAFFIC CONTROL FOUNDATION PEDESTAL TYPE I NOTES:

- INSTALL FOUNDATION ON 12" OF COMPACTED GRANULAR FILL IN ACCORDANCE WITH SECTION 2.13. LEVEL FOUNDATION WITH A PROJECTION OF 3" ABOVE FINISHED GRADE.
- INSTALL COPPER GROUND ROD: 5/8" X 10'
- PLACE NO. 6 CRUSHED STONE IN THE CENTER OPENINGS AFTER THE CONDUITS AND GROUND ROD HAVE BEEN INSTALLED.
- CONDUITS SHALL NOT PROJECT MORE THAN 2" ABOVE FOUNDATION.
- CONCRETE: (CAST-IN PLACE) PCC04460 IN ACCORDANCE WITH SECTION M.03
- CONCRETE: (PRECAST) PRC04060 IN ACCORDANCE WITH ARTICLE M.14.01

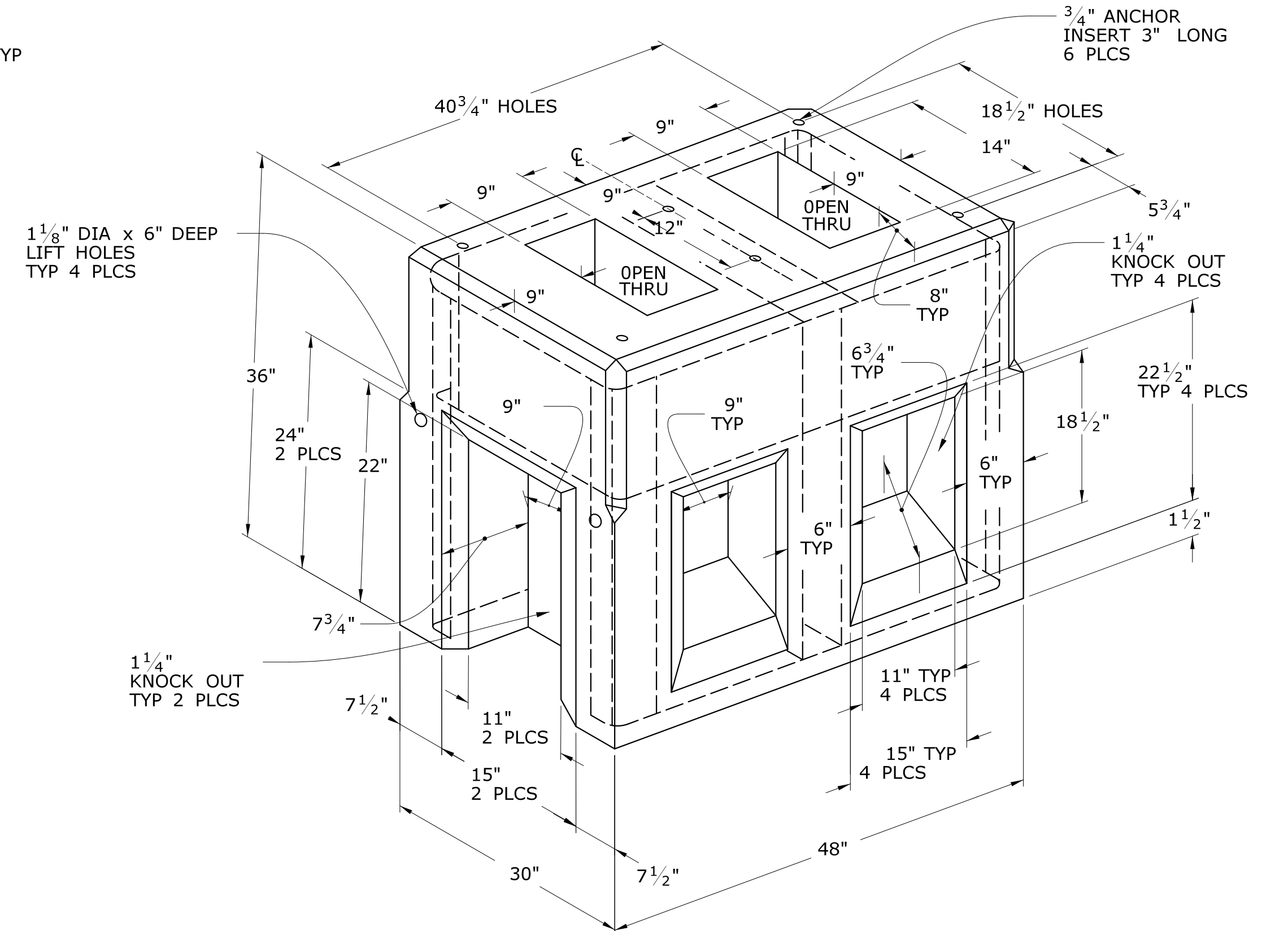


INSTALL PRECAST OR CAST IN PLACE CONCRETE SIDEWALK ON CABINET DOOR SIDE OF CONTROLLER FOUNDATION.
 PITCH SIDEWALK 1/4" PER FOOT AWAY FROM THE CONTROLLER FOUNDATION.
 REFER TO HIGHWAY STANDARD SHEET HW-921.01 FOR SIDEWALK CONSTRUCTION.

TYPICAL CONCRETE SIDEWALK AT CONTROLLER FOUNDATION



TRAFFIC CONTROL FOUNDATION PEDESTAL - TYPE I - CAST IN PLACE



TRAFFIC CONTROL FOUNDATION CONTROLLER - TYPE IV - PRECAST

TRAFFIC CONTROL FOUNDATION CONTROLLER TYPE IV NOTES:

- INSTALL FOUNDATION ON 12" OF COMPACTED GRANULAR FILL IN ACCORDANCE WITH SECTION 2.13. LEVEL FOUNDATION WITH A PROJECTION OF 4" ABOVE FINISHED GRADE.
- INSTALL COPPER GROUND ROD: 5/8" X 10'
- PLACE NO. 6 CRUSHED STONE IN THE CENTER OPENINGS AFTER THE CONDUITS AND GROUND ROD HAVE BEEN INSTALLED. THE OPENINGS SHALL BE CAPPED WITH A 2" GROUT LEVEL WITH THE TOP OF THE FOUNDATION AND NEATLY FINISHED. THE GROUT SHALL CONFORM WITH THE REQUIREMENTS OF ARTICLE M.03.05.
- #4 REBAR 2" MIN COVER AROUND ALL OPENINGS, 3-#4 REBARS IN ALL CORNERS.
- CONDUITS SHALL NOT PROJECT MORE THAN 2" ABOVE FOUNDATION.
- CONCRETE: (PRECAST) PRC04060 IN ACCORDANCE WITH ARTICLE M.14.01

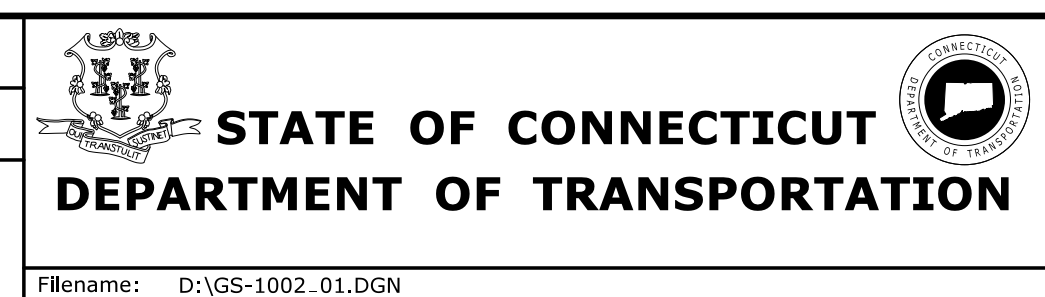
LEGEND AS SHOWN ON TRAFFIC CONTROL SIGNAL PLAN:

- PROPOSED CONTROLLER
- EXISTING CONTROLLER
- PEDESTAL MOUNTING

REV.	DATE	REVISION DESCRIPTION	SHEET NO.
3	8-2023	REVISED MINIMUM CONCRETE CLASS & MINOR REVISIONS.	
2	1-2014	REMOVED SPAN POLE FOUNDATION DETAILS, REVISED TYPICAL CONCRETE SIDEWALK AT CONTROLLER FOUNDATION.	
1	4-2012	MINOR REVISIONS.	

THE INFORMATION, INCLUDING ESTIMATED QUANTITIES OF WORK, SHOWN ON THESE SHEETS IS BASED ON LIMITED INVESTIGATIONS BY THE STATE AND IS IN NO WAY WARRANTED TO INDICATE THE CONDITIONS OF ACTUAL QUANTITIES OF WORK WHICH WILL BE REQUIRED.

DESIGNER/DRAFTER:
 CHECKED BY:
 NOT TO SCALE



SIGNATURE/BLOCK:
OFFICE OF ENGINEERING
 APPROVED BY:

PROJECT TITLE:
 TOWN:
 DRAWING TITLE:
TRAFFIC CONTROL FOUNDATIONS

PROJECT NO.
 DRAWING NO.
 SHEET NO.

Filename: D:\GSS-1002.01.DGN