



## Connecticut Bicycle and Pedestrian Advisory Board

*Volunteer board members advising agencies of the state on policies, programs, and facilities for bicycles and pedestrians.*



2800 Berlin Turnpike • Newington, CT 06111-4113  
[ctbikepedboard@gmail.com](mailto:ctbikepedboard@gmail.com)

### REGULAR MEETING NOTES

Friday April 26, 2019, 9 AM

DOT Headquarters, 2800 Berlin Turnpike, Newington, CT 06111, Room B

#### 1.0 Preliminaries

##### Call to Order/Roll Call

Susan Smith, Ken Messier, Rod Parlee, Neil Pade, Ray Rauth, Sandy Fry (Chair), Brian Kent (Vice Chair); Joe Balskus (Secretary, on the phone, departed meeting at 10:10 am)

##### Guests

Pat Zapatka, CTDOT  
Melanie Zimyeski, CTDOT  
Scott Bushee, CTDOT  
Robert Bell CTDOT  
Amy Watkins, WFMCT  
Bob Dickinson, South Windsor

#### 1.1 Minutes

Should be corrected to add last names of members, clarify that BWCT is offering a TS101 Class, fix the spelling of Melanie's last name  
Accepted by the board

#### 1.2 Input from Visitors (5 minutes)

#### 2.0 Reports/Presentations

##### 2.1 DOT Projects and News

Scott Bushee – planning and design of multi use trails – Farmington Canal example. Presentation is attached to these minutes. The Board supported CTDOT providing leadership on trail design guidance and Mr. Bushee indicated that DOT is working on that guidance, but it will take some time.

##### 2.2 Comments from Visitors

Bob Dickinson noted that South Windsor has encouraged commercial entities to donate easements for side trail connections to trails in town. Some discussion on DOT sign encroachment process.

##### 2.3 DOT Updates

Colleen Kissane has retired, Robert Bell is serving in the acting capacity.  
On May 8 there will be a public meeting regarding the Putnam Bridge trail.  
Specifics – Glastonbury Town Hall, meeting begins at 6 PM with design

#### NOTE TO PERSONS WITH SPECIAL NEEDS:

Anyone who requires an auxiliary aid or service for effective communication or other accommodation at a meeting must notify the Connecticut Department of Transportation in advance of the meeting as soon as they are able.



## Connecticut Bicycle and Pedestrian Advisory Board

*Volunteer board members advising agencies of the state on policies, programs, and facilities for bicycles and pedestrians.*



2800 Berlin Turnpike • Newington, CT 06111-4113  
[ctbikepedboard@gmail.com](mailto:ctbikepedboard@gmail.com)

presentation at 6:30 pm.

Bike to work day will be celebrated at DOT on May 17

The Active Transportation Plan is on line, answers to questions/comments submitted will be posted. See <http://www.ctbikepedplan.org/> (nb, as of the time of this drafting of minutes, this information was not apparent on the website but should be there by May 10). The bike network map will also be available and will be interactive. The Board asked about the process for updating the map as some board members had notified DOT of incorrect designations, which might cause a bicyclist to try a very unsafe route. DOT explained that the bike network map is not intended to inform cyclists but is to inform designers. DOT NO LONGER PROVIDES MAP GUIDANCE FOR CYCLISTS. The Board noted that this information needs to be made very visible on the online tool, as bicyclists are used to the DOT providing such guidance.

Listening sessions for the plan occurred in the regions, coordinated with the COGs. The COGs could decide whether the session should be public or not.

The Board expressed concern that this was not in keeping with the January 2017 email from Tom Maziarz (attached) which promised a collaborative plan refinement process. Sandy will forward this email to DOT staff.

Sandy and Melanie discussed how the map conveys suitability of routes/ tiers of active or potential routes.

### 2.4. **Watch for Me CT Updates**

Amy Watkins handed out a flyer for the Complete Streets and Vision Zero to be held June 7 in New Haven (flyer is attached, registration is free)

Watch For ME CT will have a theme night on May 11 at the Yard Goats game in Hartford. The Hartford Police department will participate and encourage safe pedestrian and motorist behavior in the vicinity of the station.

### 2.5. **Bike Walk CT Updates**

Bike racks are now available on the Hartford line.

Legislation status: three items of interest are moving forward:

- Allowing local governments more control over local speed limits
- Scooter legislation
- Crosswalk safety (pedestrian at crosswalk, not in)

Bike safety education: Showed the notebook (with new curriculum and resource materials) that is made available through the 4<sup>th</sup> grade teacher training session. Sue is willing and available to give one hour presentations to school systems that might be interested in pursuing. Sue is providing an all day bike education program for grade k through 5 in Greenwich.

April 27, TS101 in Glastonbury

June 7, Southington town wide bike safety

#### **NOTE TO PERSONS WITH SPECIAL NEEDS:**

Anyone who requires an auxiliary aid or service for effective communication or other accommodation at a meeting must notify the Connecticut Department of Transportation in advance of the meeting as soon as they are able.



## Connecticut Bicycle and Pedestrian Advisory Board

*Volunteer board members advising agencies of the state on policies, programs, and facilities for bicycles and pedestrians.*



2800 Berlin Turnpike • Newington, CT 06111-4113  
[ctbikepedboard@gmail.com](mailto:ctbikepedboard@gmail.com)

### July 19-21 LCI seminar

Discover CT Tours will be held June 23 (Falls Village) and Sep 15 (New Britain). Registration is now open. Sue shared cards with the Tour information (attached)

BWCT will host bike to work on May 17 at the Old State House in downtown Hartford. The CTBPAB would like to have a table at this event. Amy began the development of a draft CTBPAB brochure which we could finalize for this purpose. Could use the tabling as an opportunity to get input from bicyclists on state needs.

### **3.0 Old Business**

#### **2.1 Retreat results and followups**

Retreat results – Idea of the potential May 10th meeting will not go forward. To discuss idea and timing of a late summer/ fall meeting. Consider - meeting in the evening to accommodate working people or in the daytime to accommodate area staff? Make this a topic for discussion at our May meeting for possible offsite meetings for June or September.

Website update since last meeting. Need to review and provide additional direction on what to do with the site.

Follow up with Mark Carlino regarding sign issue discussion with Naugatuck and issue with Districts presented at the last meeting. Marc requesting additional information. Neil to discuss with Sandy between meetings.

Adjourn at 10:40 AM.

Next Meeting – May 24, 2019, **9 AM**  
**Unable to attend? You can still participate:**  
Using your computer, tablet or smartphone:  
<https://global.gotomeeting.com/join/900550389>

OR

You can also dial in using your phone: United States +1 (312) 757-3121  
Access Code: 900-550-389

#### **NOTE TO PERSONS WITH SPECIAL NEEDS:**

Anyone who requires an auxiliary aid or service for effective communication or other accommodation at a meeting must notify the Connecticut Department of Transportation in advance of the meeting as soon as they are able.



# CONNECTICUT'S EFFORT TO COMPLETE THE EAST COAST GREENWAY



**PRESENTER:**

**SCOTT BUSHEE, P.E.  
CT DOT – HIGHWAY DESIGN**



200 SPINE ROUTE MILES

OFF-ROAD

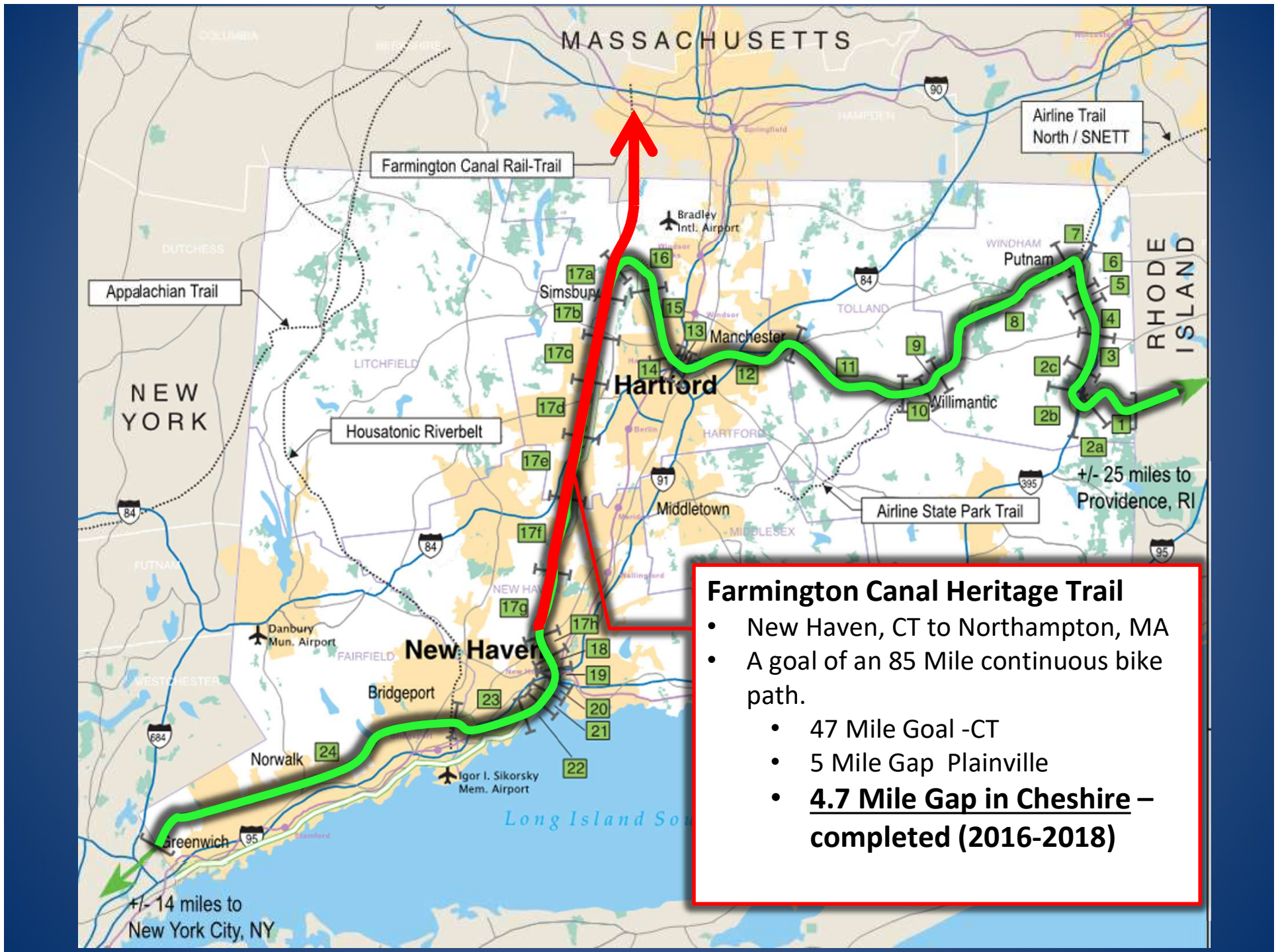
ON-ROAD



East Coast



Greenway.





# CHALLENGES – TRAIL CLEAN UP





# CHALLENGES – TRAIL CLEAN UP



01/31/2012

**BEFORE CLEARING**

**AFTER  
CLEARING FOR  
SURVEYING**



# CHALLENGES – INDUSTRIAL PROPERTY OWNERS ALONG THE TRAIL

## BEFORE



- Unauthorized use of the state property





# CHALLENGES – INDUSTRIAL PROPERTY OWNERS ALONG THE TRAIL

## BEFORE



- Unauthorized use of the state property

## AFTER



- Chain-link fence installed with privacy slats to enhance trail user experience and eliminate unauthorized use of state property



# BRIDGES

- STRUCTURALLY SOUND
- 2' OF BALLAST MATERIAL
- GRAFFITI
- NO PEDESTRIAN PROTECTION



# SAFETY - BRIDGE RAIL TRANSITIONS

## AVOID LEAVING BLUNT ENDS



Curved chain-link fence

Wood Rail along bridges to protect trail users from severe injuries



# SAFETY CHAIN LINK FENCE (W/PRIVACY SLATS)

- To enhance trail user experience
- Screen industrial properties





# SAFETY – THREE RAIL FENCE



- Protect steep drop offs (2H:1V)





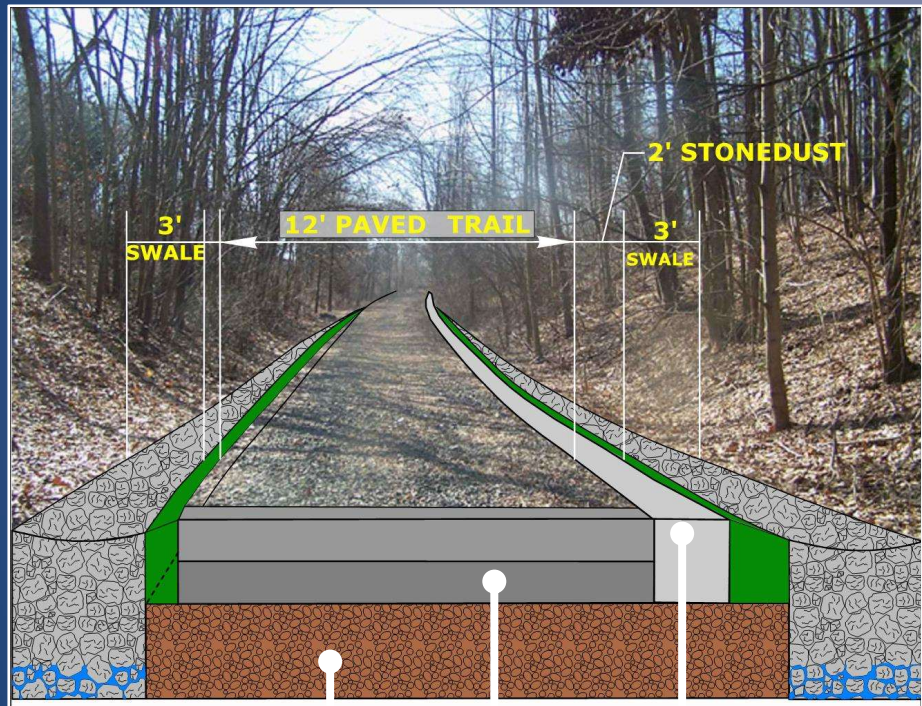
# SAFETY – TIMBER RAIL

- Separate trail users from traffic
- At local road crossings to guide trail users





# TYPICAL TRAIL SECTIONS



2.75" STONEDUST

2.75" HMA PAVEMENT

6" PROCESS AGREGATE BASE

3' DRIANGE SWALES FOR FILL SLOPES



# SAFETY – SPEED TABLES





# TRAIL AMENITIES



**TRASH CANS**



**DOG WASTE STATIONS**



**REMOVABLE BOLLARDS**



**CHAIN**



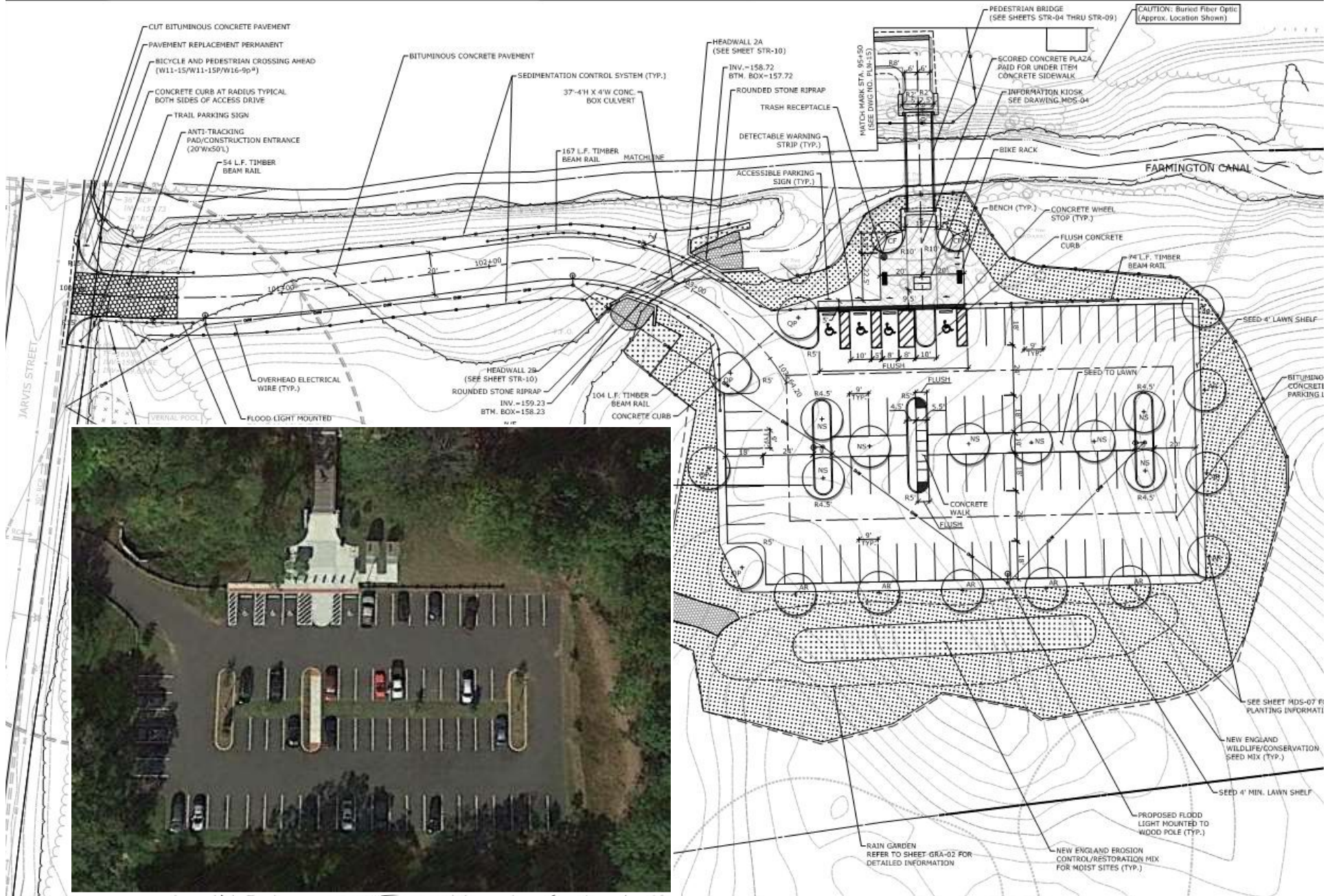
**PICNIC TABLES**



**BENCHES**



# PARKING LOT – 77 SPACES





# TRAIL AMENITIES

**1. ASSEMBLED OFF SITE  
AND DELIVERED**



**2. EXCAVATE AND  
INSTALL SLABS**



**3. INSTALL  
COMPOSTING CHAMBER**





# TRAIL AMENITIES



**SOLAR PANELS**

**VENTILATION FAN**

**UNISEX LABELS**

**STEEL AND  
LOCKABLE DOOR**

**MAINTENANCE  
ACCESS LID**

**ADA  
ACCESSIBLE**

**CLIVUS C-11 ADA RESTROOM**



# SAFETY - ILLUMINATION





# SIGNS



**OVERHEAD TRAIL HEAD SIGNS  
FOR MAINTENANCE VEHICLE  
ACCESS**



**TRAIL SIGNS AT LOCAL  
ROAD CROSSINGS**



# PUBLIC INFORMATION SIGNS



## THE FARMINGTON CANAL HERITAGE TRAIL



1828 - 1848



1848 - 1996



TODAY

Before you lies a small remnant of the Canal Line rail tracks. The short spur represented here was built around 1960 to provide rail access to the (then) newly built industrial distribution site about a quarter-mile to the northeast.

The Farmington Canal first opened for business along its complete length from New Haven to Northampton in 1835. Within 12 years of its completion the proprietors converted the operation into a railroad, deemed far more efficient and profitable than an inland canal as a transportation route, which mostly ran upon the tow path of the former Canal. The New Haven and Northampton Railroad 'Canal Line' soon exceeded the economic importance of the Canal itself and remained vital to the region through the mid-20th Century. Its importance declined in the post-war era and it was partially destroyed by flooding in the early 1980's, which led to its demise from increasing neglect and disuse. The tracks were mostly removed by 1987.

Today, this historic route has mostly been converted into a popular multi-use trail known as the Farmington Canal Heritage Trail.

RAILROAD CANAL LINE  
TIME TABLE



The Farmington Canal Heritage Trail is part of East Coast Greenway, stretches from New Haven to the Massachusetts border before continuing into Massachusetts for a total length of 80.5 miles and 11 towns. Along the way are historic buildings, canal locks, the remains of canal aqueducts and other landmarks that provide a rich cultural background for the trail experience.







Cornwall Avenue





# BOARDWALK CONSTRUCTION – TREE REMOVAL





# CONCRETE BOARDWALK – PILE DRIVING



**152 PILES**  
**DEPTH OF PILES 20 – 40 FT**

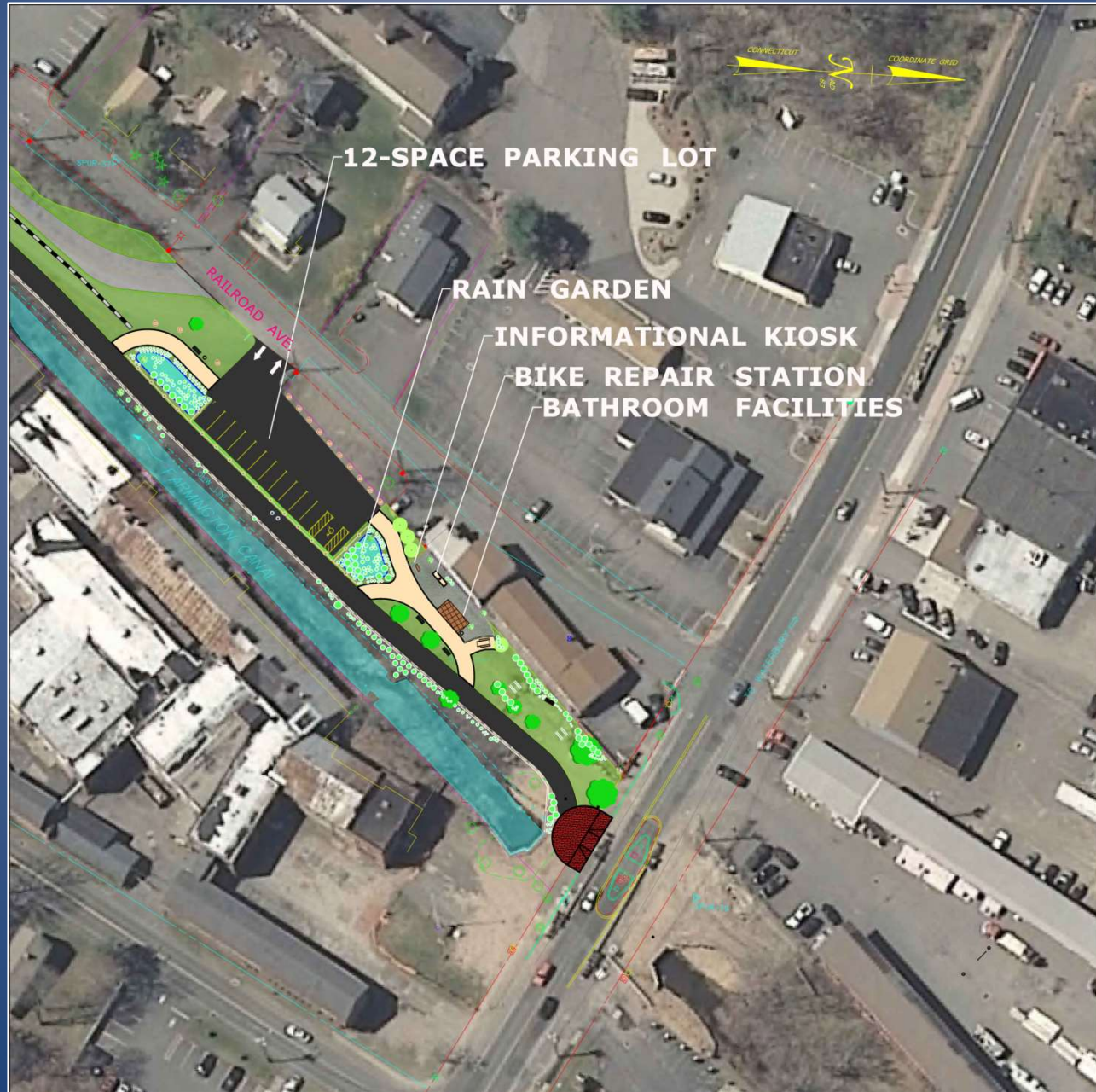


# CONCRETE BOARDWALK





# PARKING LOT





# KIOSKS





# PRECAST RESTROOM BUILDING



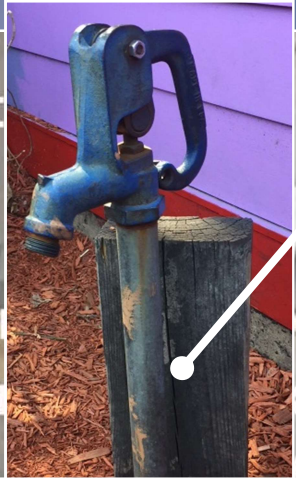
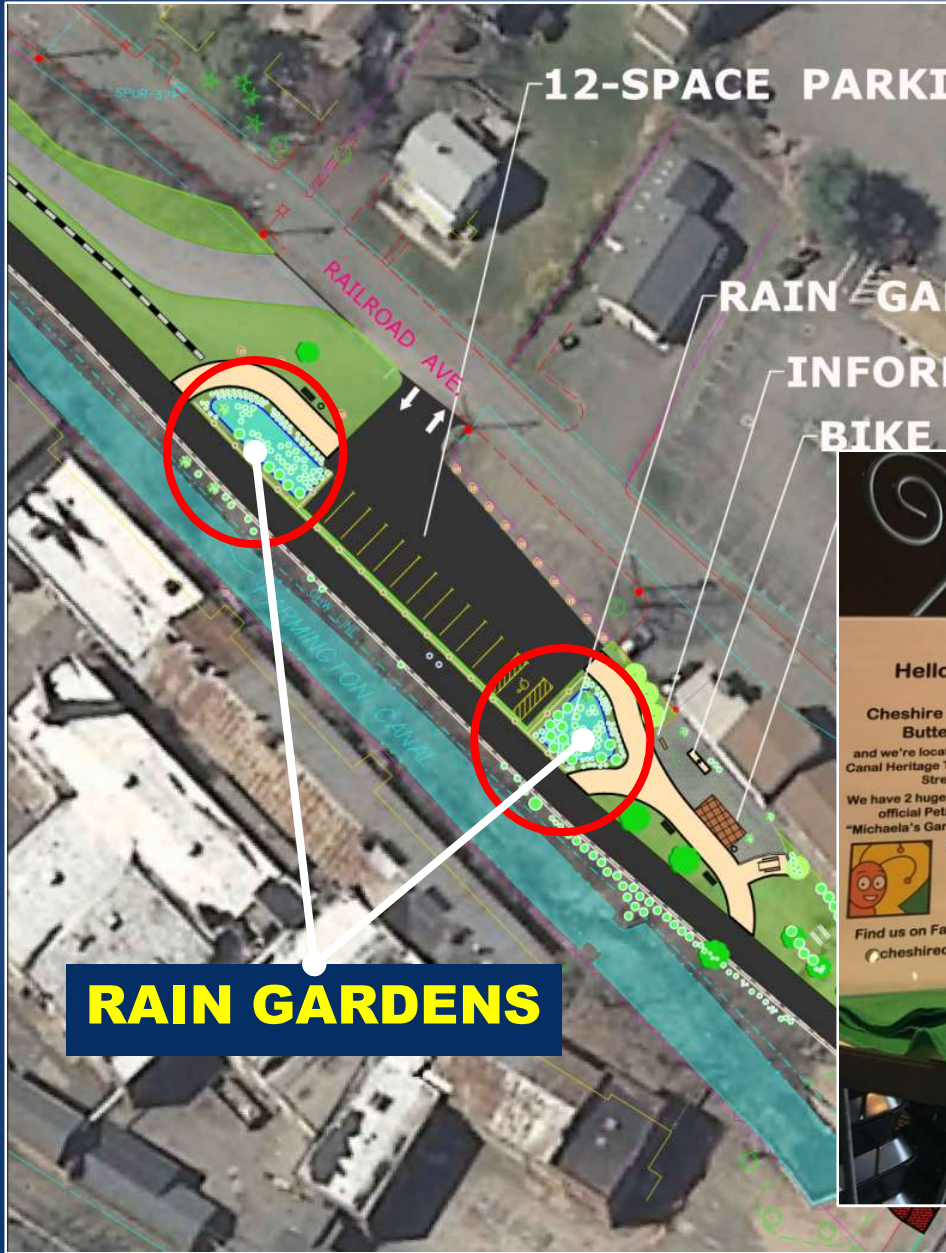
Lights

Water Fountain / Bottle Filler

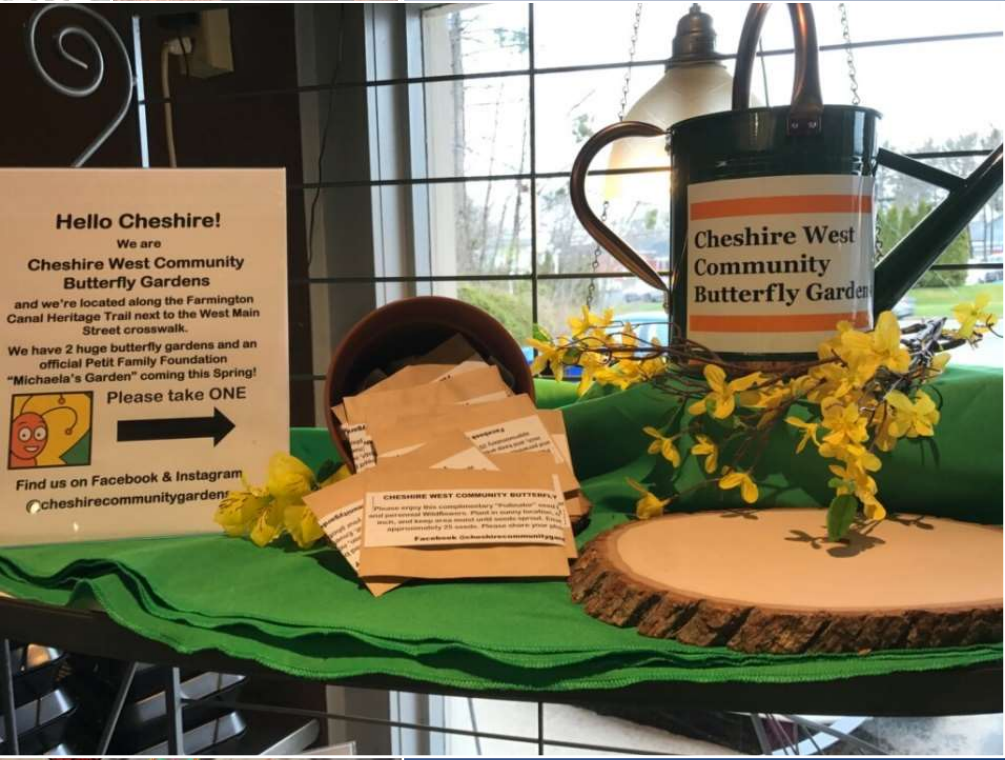
Flush Mounted Water Faucet



# RAIN GARDENS / BUTTERFLY GARDENS



**ABOVE GROUND  
LOCKABLE  
WATER OUTLET**



**Hello Cheshire!**  
We are  
**Cheshire West Community  
Butterfly Gardens**  
and we're located along the Farmington  
Canal Heritage Trail next to the West Main  
Street crosswalk.  
We have 2 huge butterfly gardens and an  
official Petit Family Foundation  
"Michaela's Garden" coming this Spring!  
**Please take ONE**  
Find us on Facebook & Instagram  
@cheshirecommunitygardens



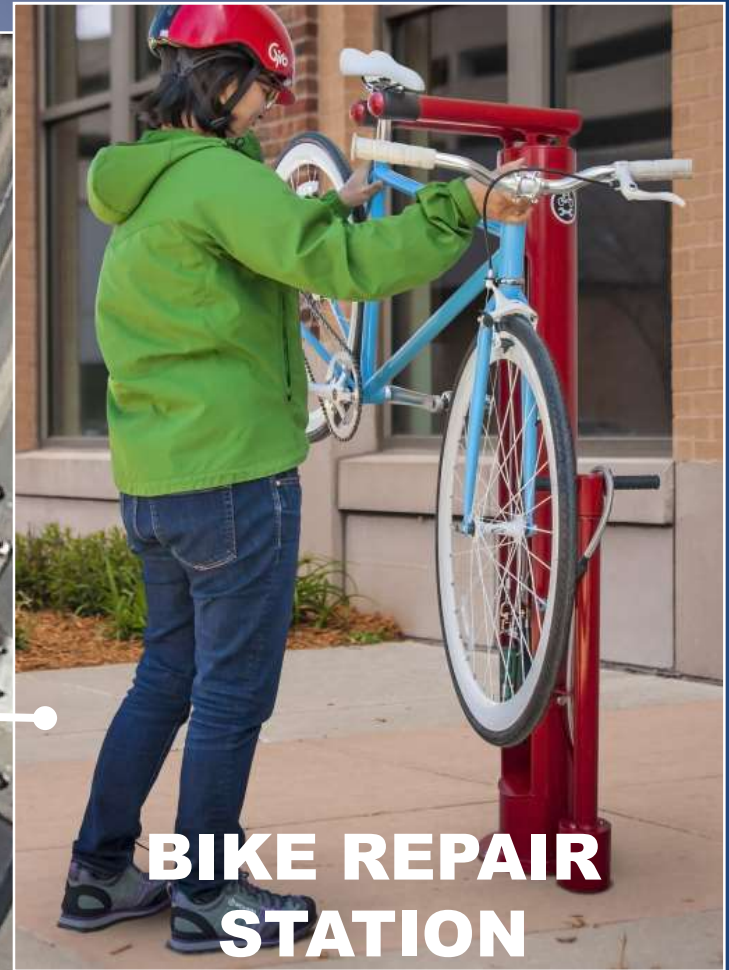
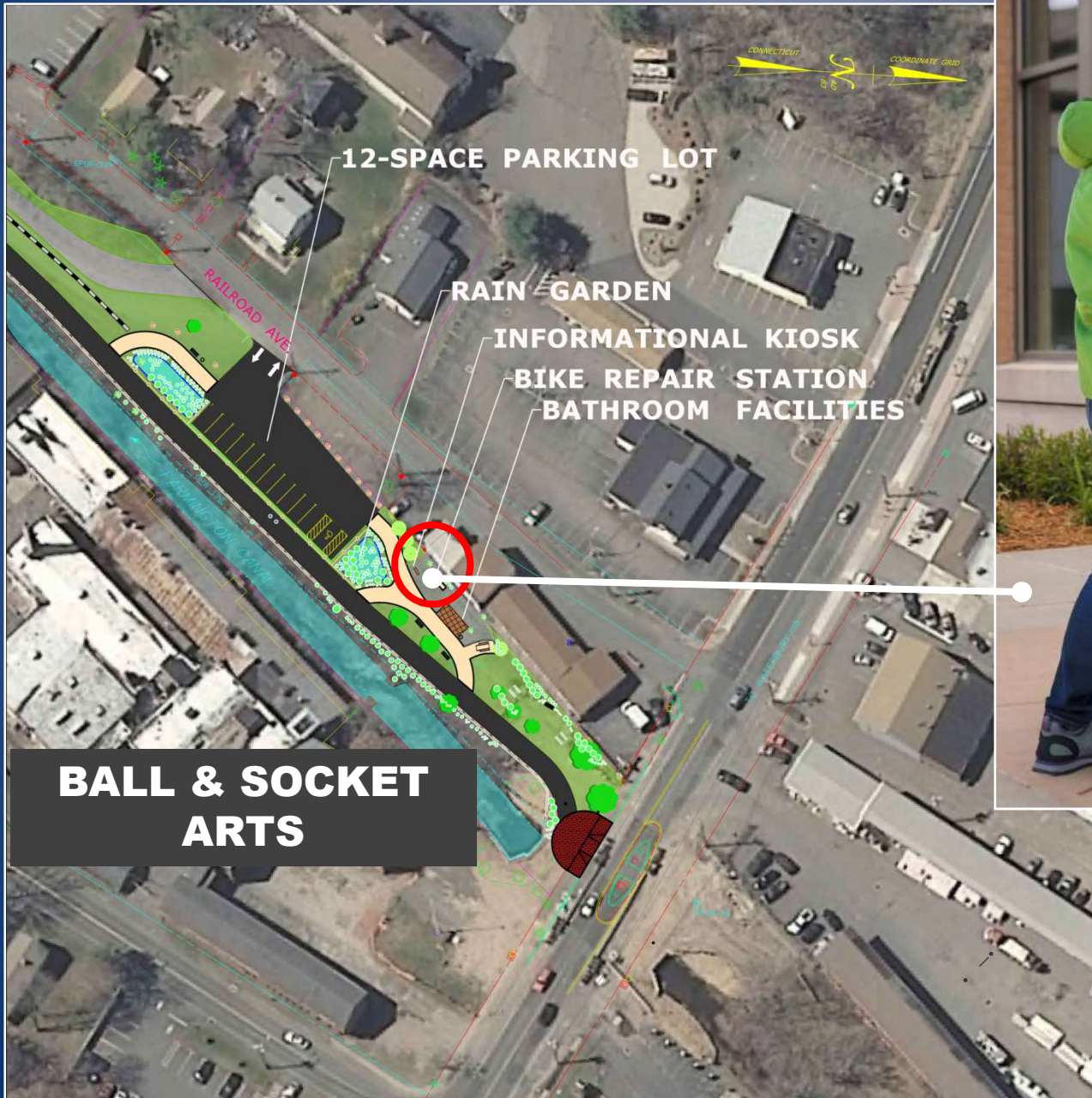
**RAIN GARDENS**



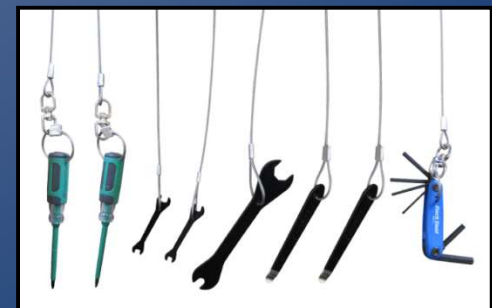
# RAIN/ BUTTERFLY GARDEN





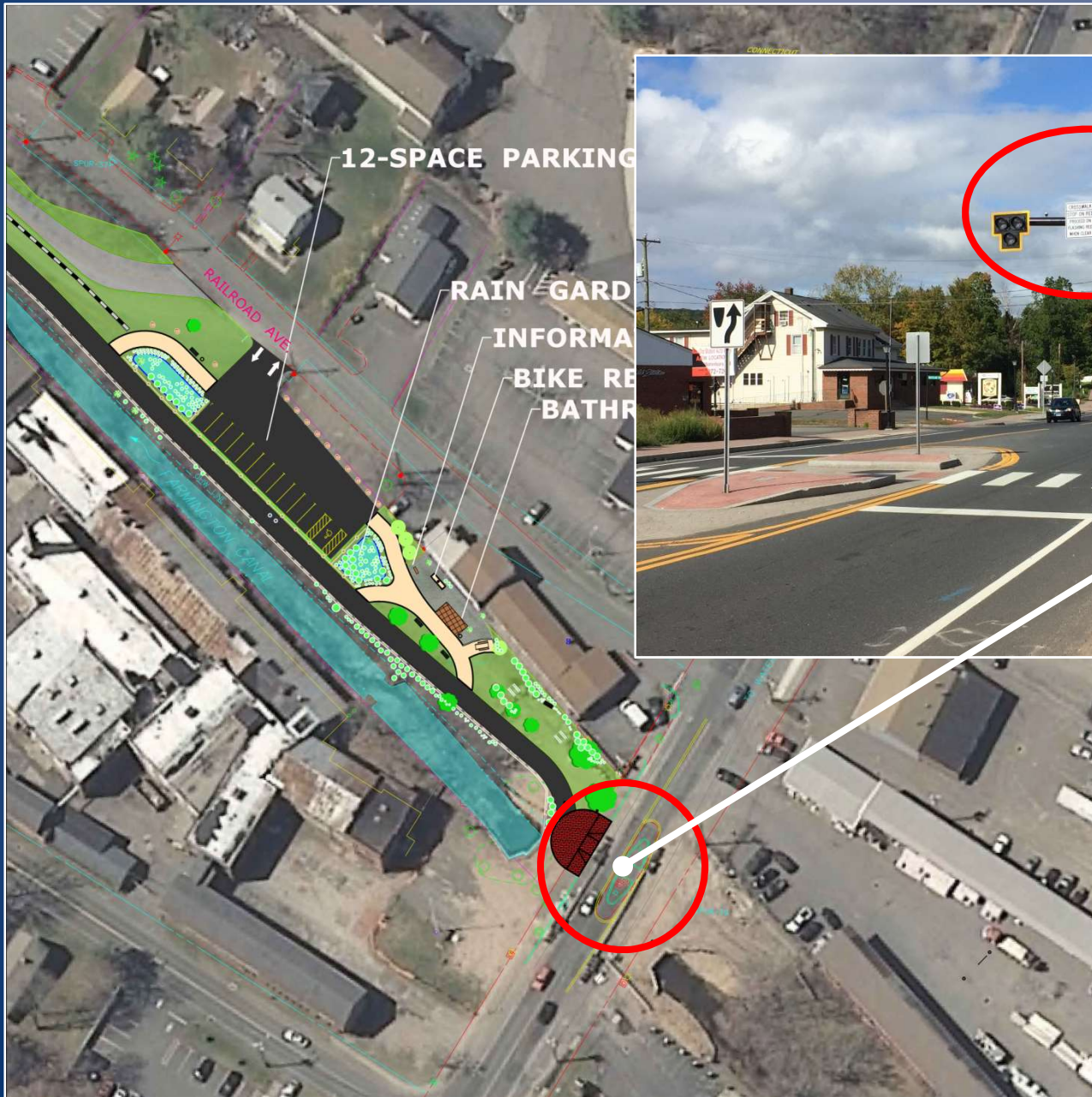


**BIKE REPAIR STATION**

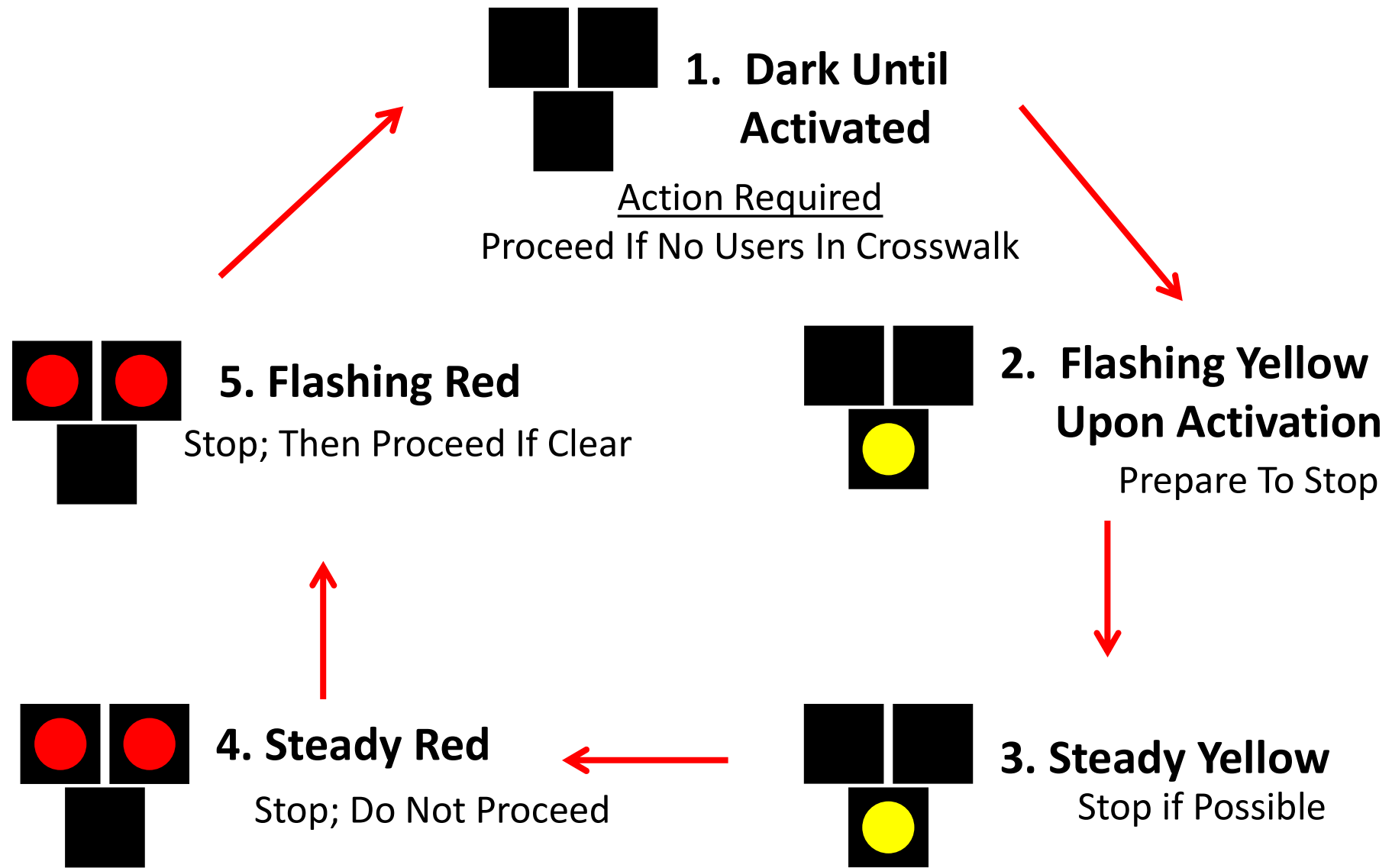




# HIGH-INTENSITY ACTIVATED CROSSWALK (HAWK) SIGNAL







**Pedestrian Hybrid Beacon**  
***“HAWK Signal”***



# HIGH-INTENSITY ACTIVATED CROSSWALK (HAWK) SIGNAL





# Questions/Comments

