



Connie

Connecting People for Better Health

Board of Directors Meeting

April 7, 2021

OPENING

- Roll Call
- Approval: Board Meeting Minutes
- Approval: Meeting Agenda



REPORTS

- Board Chair Report
- Executive Director Report
- Finance & Audit Committee Report



BUSINESS AGENDA



Board Treasurer and Secretary



**Connie Board of Directors Meeting is in
Recess until 5:15 pm.**





Update on Onboarding and Operations



Health Systems

Yale
NewHaven
Health

Hartford
HealthCare



IPAs/CINs

SOHO
HEALTH

cmg
COMMUNITY
MEDICAL GROUP

Medicaid ASOs

Community
Health Network
of Connecticut, Inc.™

beacon
health options

Other

Community Health Center
Association of Connecticut

signifyhealth®

FQHCs ^{PN}

- First Choice Health Center
- Southwest Community Health Ctr
- Wheeler Clinic

DMHAS Facilities ^{PN}

- Capitol Region Mental Health Center
- Connecticut Mental Health Center
- River Valley Services
- Southeastern Mental Health Authority
- Southwest CT Mental Health System
- Western CT Mental Health Network

^{PN} BH Providers

- Advanced Behavioral Health
- BHCare
- Bridges Healthcare
- Community Health Resources
- Community Mental Health Affiliates
- Sound Community Services
- United Services
- Wellmore Behavioral Health



HIE



- Auerbach Pediatrics
- Baker Pediatrics
- Candlewood Valley Pediatrics
- Canterbury Pediatrics
- Center for Pediatric Medicine
- Child & Adolescent Healthcare
- LifeSpring Pediatrics
- Litchfield County Pediatrics
- Manchester Pediatric Associates
- New Milford Pediatrics
- Newtown Pediatrics
- Pediatric Associates
- Pediatric Associates of Western CT
- Pediatric Care Center
- Pediatric Health Associates
- Pediatric Partners
- Pioneer Valley Pediatrics
- Rocky Hill Pediatrics
- SmartStart Pediatrics
- Village Pediatrics

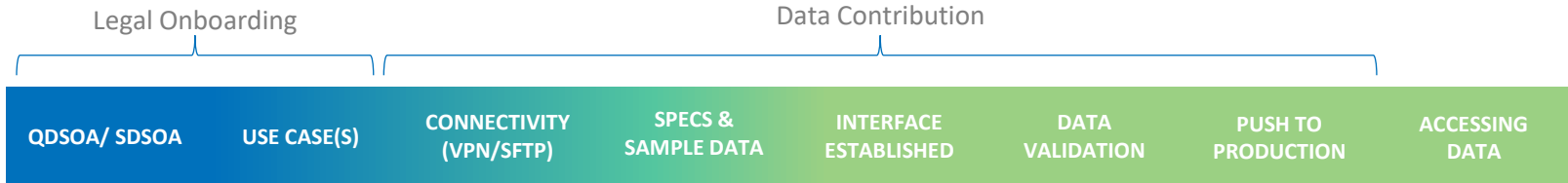
Medical Practices

ProHealth
PHYSICIANS

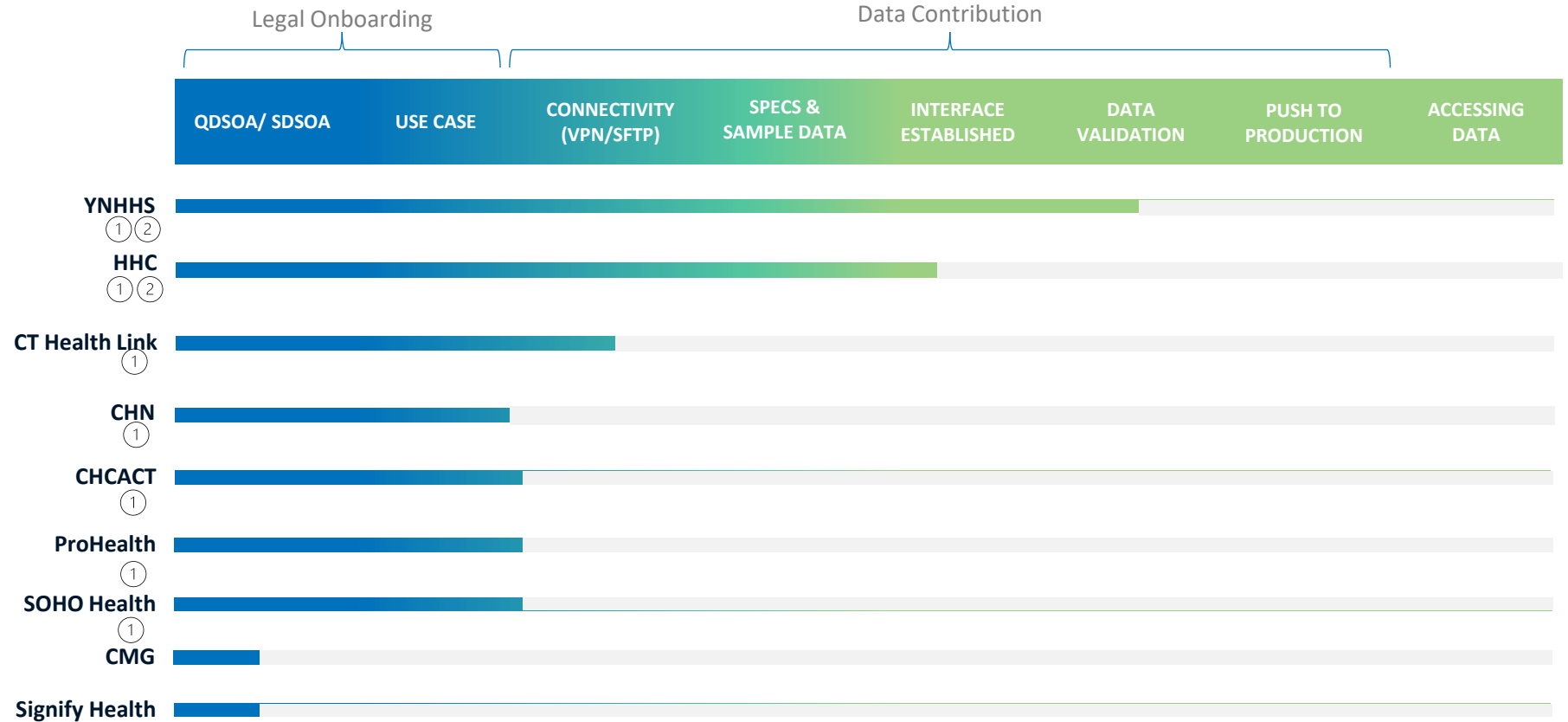


44 Connected
Organizations

Deployment Phases



ONBOARDING PROGRESS

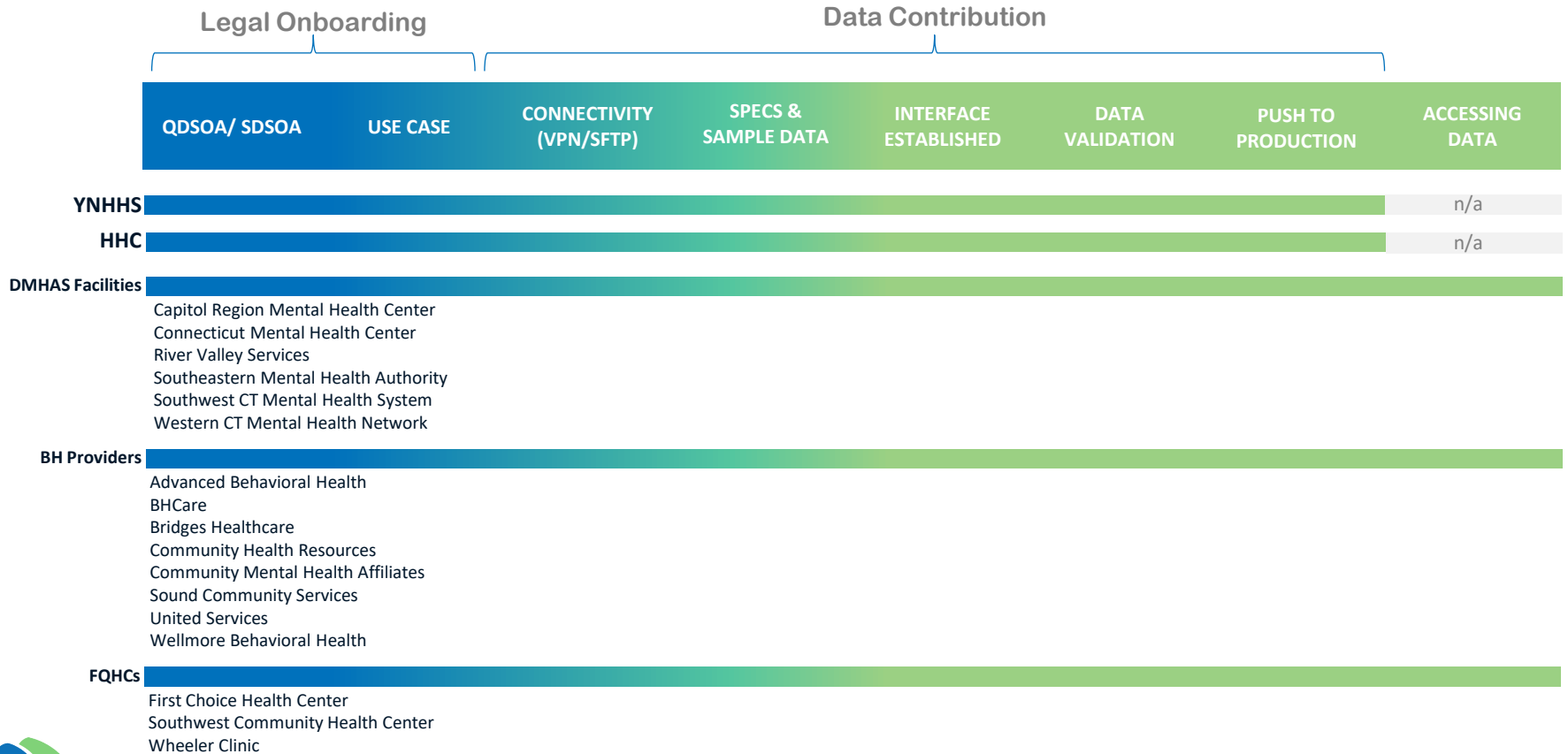


① Empanelment

② Encounter Notification

③ Clinical Data

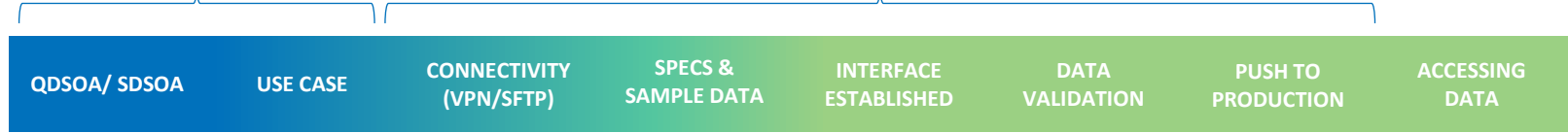
ONBOARDING PROGRESS: PROJECT NOTIFY



ONBOARDING PROGRESS: CT HEALTHLINK

Legal Onboarding

Data Contribution

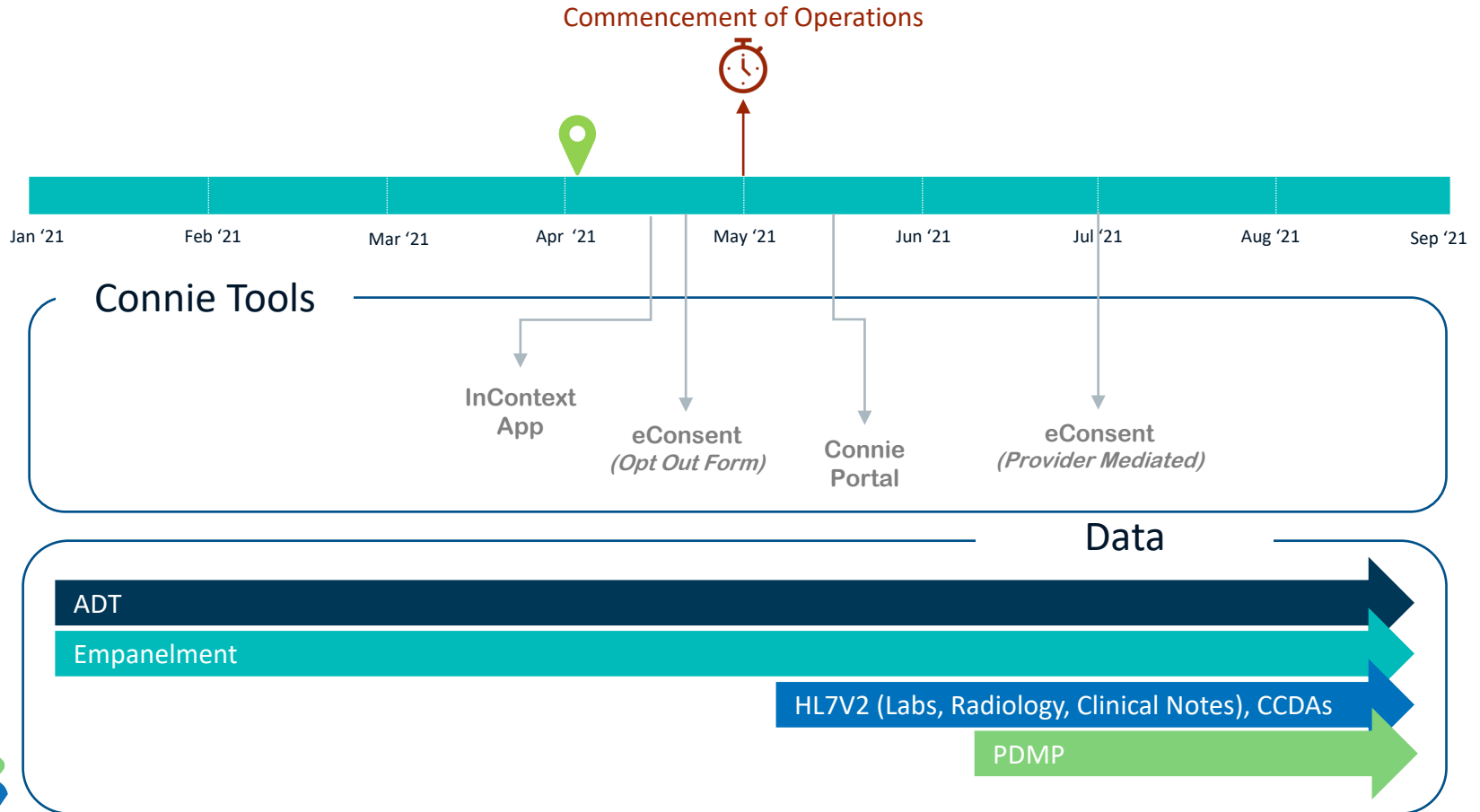


CTHL

- Auerbach Pediatrics
- Baker Pediatrics
- Candlewood Valley
- Canterbury Peds
- Ctr for Ped Med
- Child & Adol Health
- LifeSpring Peds
- Litchfield County Peds
- Manchester Ped Assoc
- New Milford Peds
- Newtown Peds
- Pediatric Associates
- Pediatric Assoc of Western CT
- Pediatric Care Center
- Pediatric Health Assoc
- Pediatric Partners
- Pioneer Valley Peds
- Rocky Hill Peds
- SmartStart Peds
- Village Peds



CONNIE DEPLOYMENT TIMELINE (FY 21)





Second Read Policy: Use Case Development and Approval





First Read Policy: Consent Principles



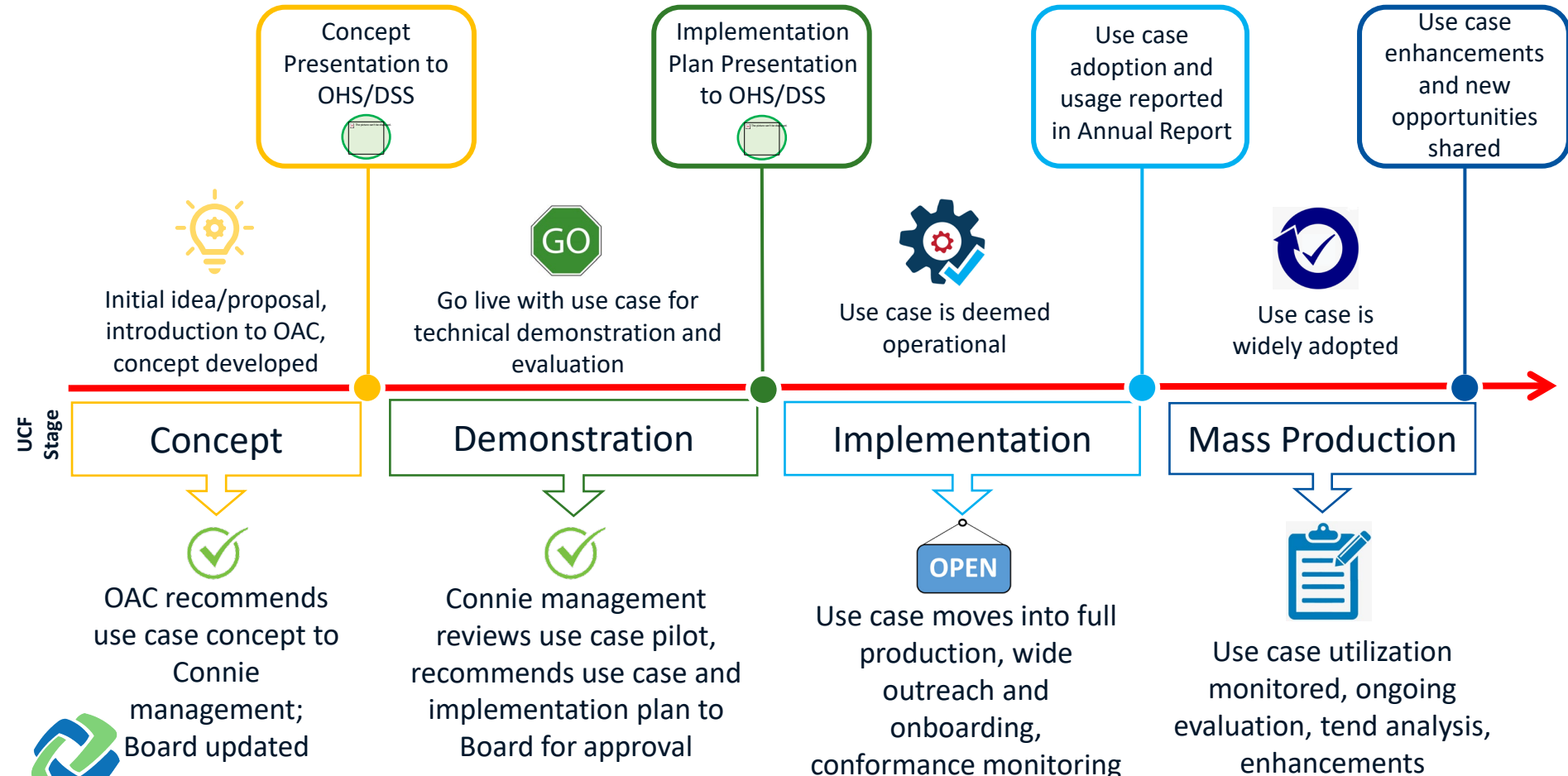
Adjournment



APPENDIX



Use Case Development and Approval Process



Opt-out Process

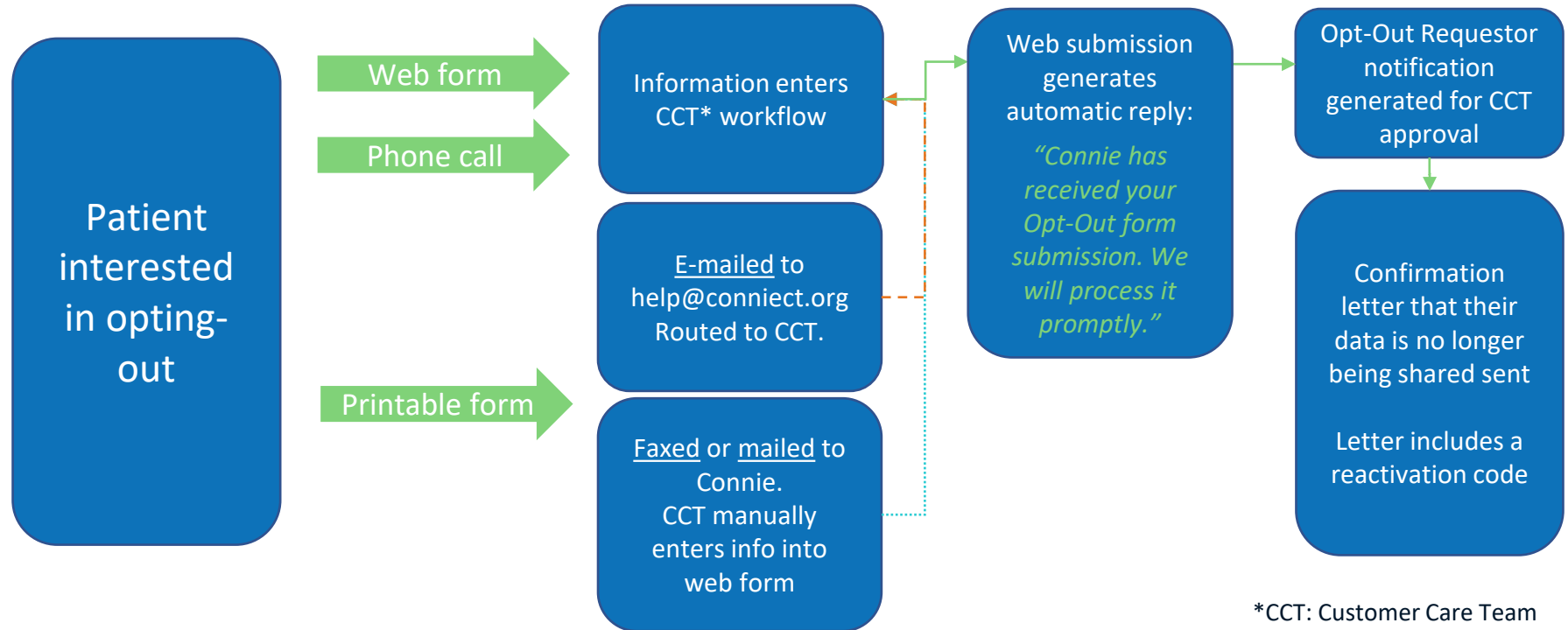
- Finalizing the initial process and functionality for customers to opt-out
- Binary Choice
- Multiple Methods supported by Connie's Customer Care

Team:

- Website Form
- Fax Form
- Email Form
- Mail Form
- Phone



Opt-out Work Flow



When Physicians/Providers query the HIE for a patient who has opted out, they receive no records, with the message:

"No data available for display. The patient has either opted-out of data sharing or no data has been received."

