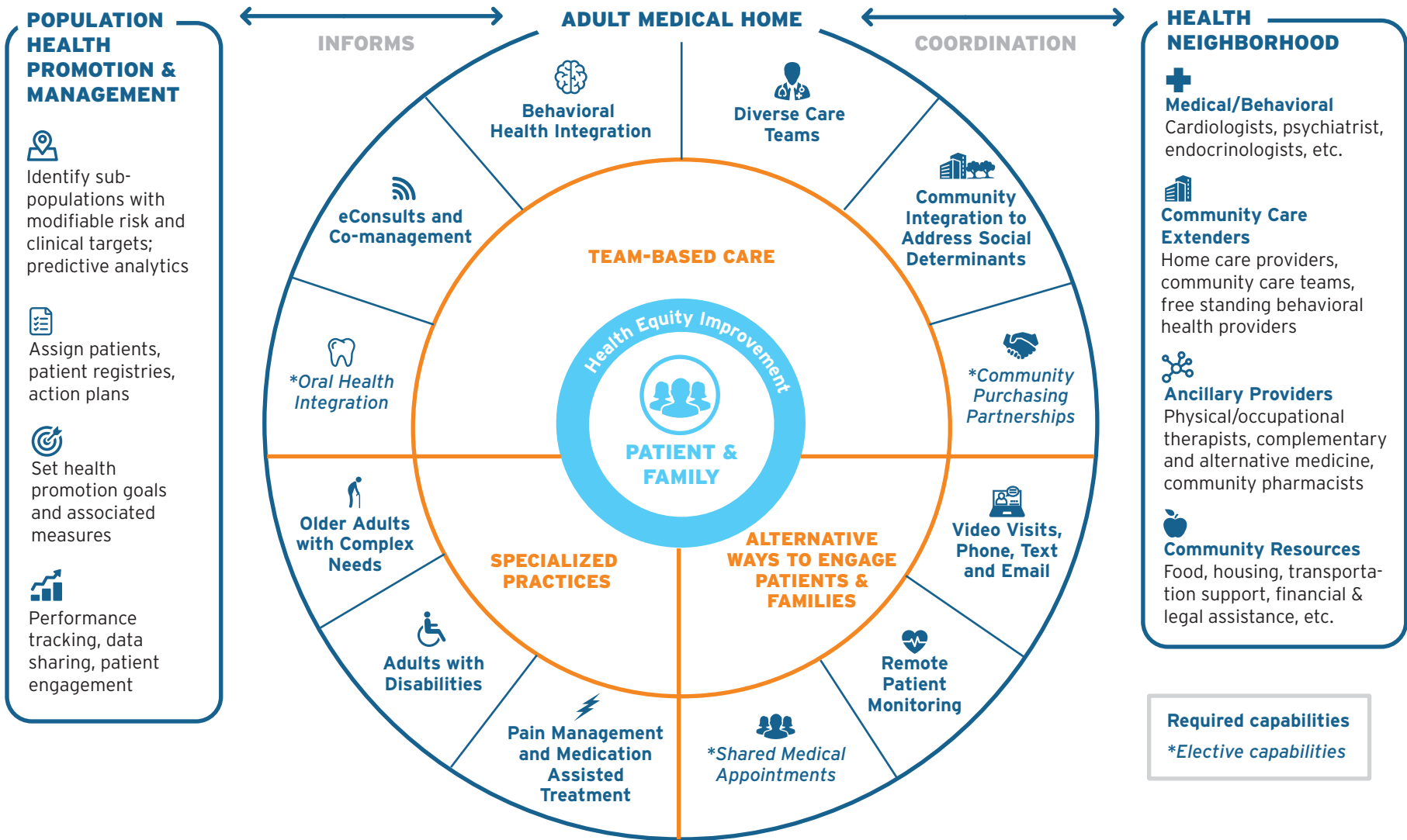


# ADULT PRIMARY CARE MODERNIZATION CARE DELIVERY CAPABILITIES

**DRAFT**

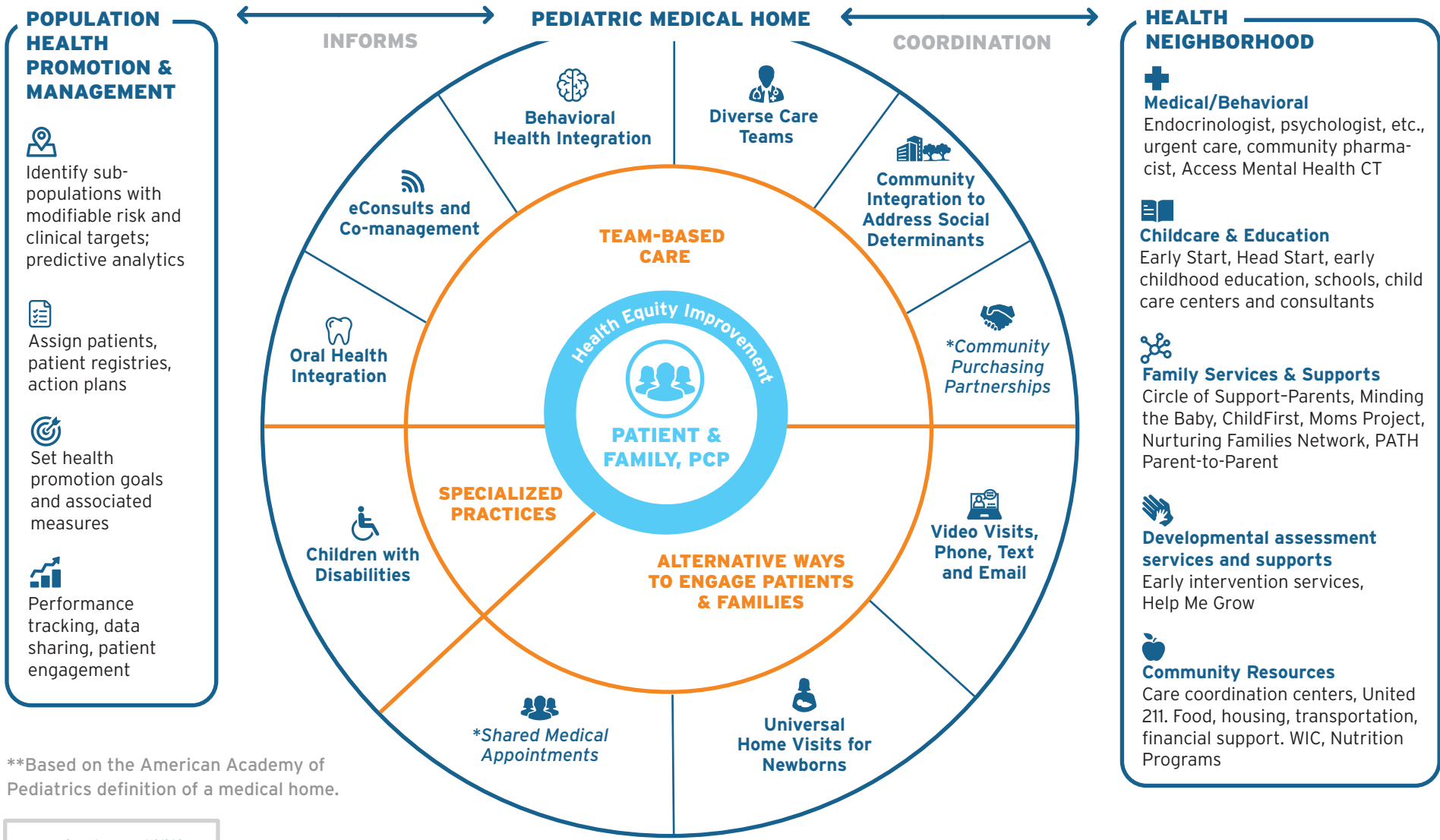
Practices participating in PCM will develop care delivery capabilities that aim to make care more accessible, convenient and responsive to diverse patients' needs while improving health equity.



# PEDIATRICS PRIMARY CARE MODERNIZATION CARE DELIVERY CAPABILITIES

**DRAFT**

Pediatric practices participating in PCM will develop care delivery capabilities that aim to make care more accessible, continuous, comprehensive, family-centered, coordinated, compassionate, and culturally effective.\*\*



**POPULATION HEALTH PROMOTION & MANAGEMENT**

- Identify sub-populations with modifiable risk and clinical targets; predictive analytics
- Assign patients, patient registries, action plans
- Set health promotion goals and associated measures
- Performance tracking, data sharing, patient engagement

**HEALTH NEIGHBORHOOD**

- Medical/Behavioral**  
Endocrinologist, psychologist, etc., urgent care, community pharmacist, Access Mental Health CT
- Childcare & Education**  
Early Start, Head Start, early childhood education, schools, child care centers and consultants
- Family Services & Supports**  
Circle of Support-Parents, Minding the Baby, ChildFirst, Moms Project, Nurturing Families Network, PATH Parent-to-Parent
- Developmental assessment services and supports**  
Early intervention services, Help Me Grow
- Community Resources**  
Care coordination centers, United 211. Food, housing, transportation, financial support. WIC, Nutrition Programs

\*\*Based on the American Academy of Pediatrics definition of a medical home.

**Required capabilities**  
\*Elective capabilities